

Sizing Charts

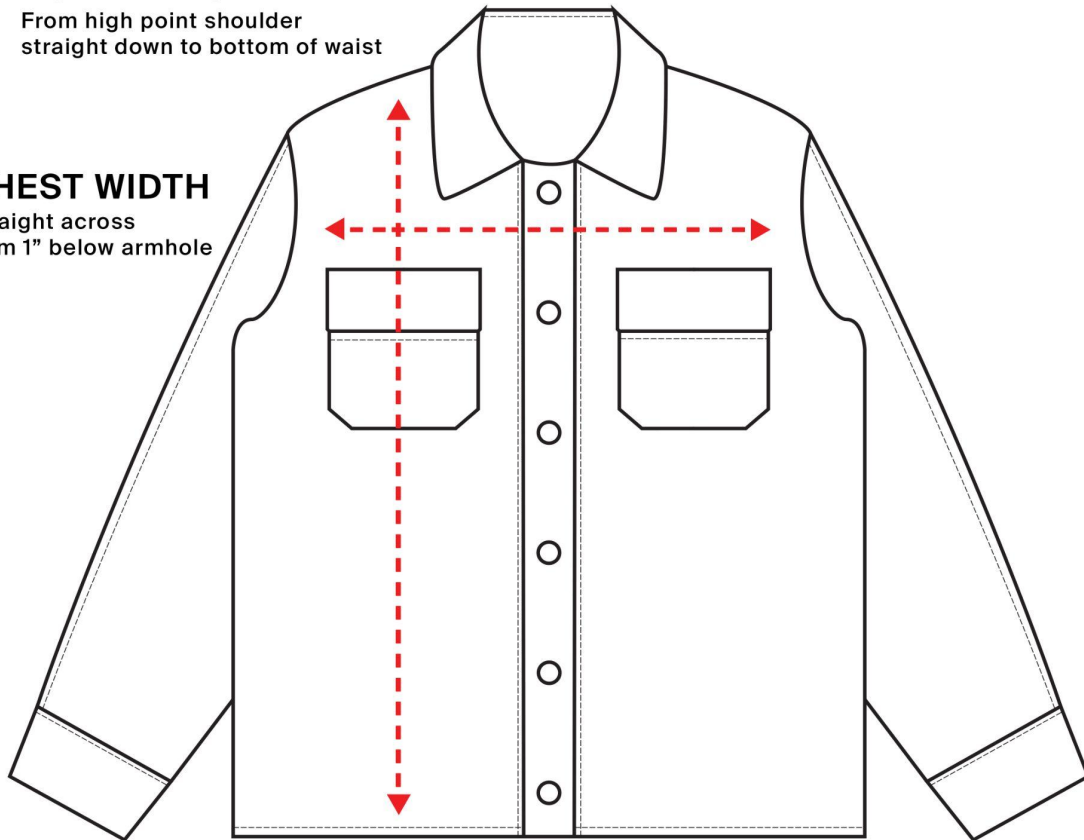
How to read the sizing charts:

BODY LENGTH

From high point shoulder
straight down to bottom of waist

CHEST WIDTH

Straight across
from 1" below armhole



Jacket Sizing

	XXS	XS	S	M	L	XL	2XL	3XL
Body Length	23 ⁵ / ₈	24 ³ / ₈	25 ⁵ / ₈	28	28 ³ / ₄	29 ¹ / ₂	30 ¹ / ₄	31 ¹ / ₈
Chest Width (Laid Flat)	24 ⁵ / ₈	25 ⁵ / ₈	26 ⁵ / ₈	27 ¹ / ₂	29	30 ¹ / ₄	31 ³ / ₄	33 ¹ / ₈
Sleeve Length	21 ¹ / ₄	21 ⁵ / ₈	22 ⁷ / ₈	24 ¹ / ₄	24 ³ / ₄	25 ³ / ₈	26	26

Product measurements may vary by up to 2" (5 cm).

Please note these measurements are based on EU sizing, so the size might be smaller than the one you're accustomed to. If you're looking for US sizing, check the size chart and consider sizing up.