

Sizing Charts

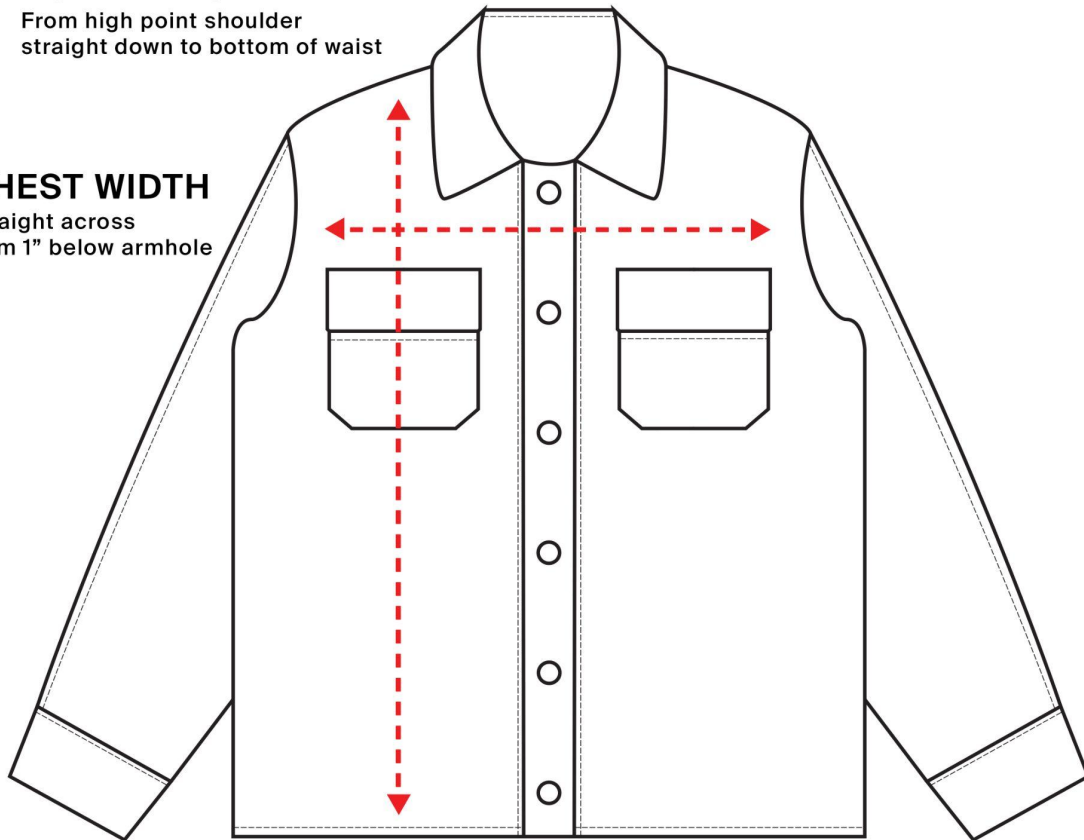
How to read the sizing charts:

BODY LENGTH

From high point shoulder
straight down to bottom of waist

CHEST WIDTH

Straight across
from 1" below armhole



Jacket Sizing

	XS	S	M	L	XL	2XL	3XL
Body Length	25 1/2	26	26 1/2	27	27 1/2	28	28 1/2
Body Width	18	19 1/2	21 1/2	23 1/2	25 1/2	27	28 1/2
Sleeve Length	35	35 1/4	35 1/2	35 3/4	36	36 1/4	36 1/2

Product measurements may vary by up to 2" (5 cm).