

Sizing Charts

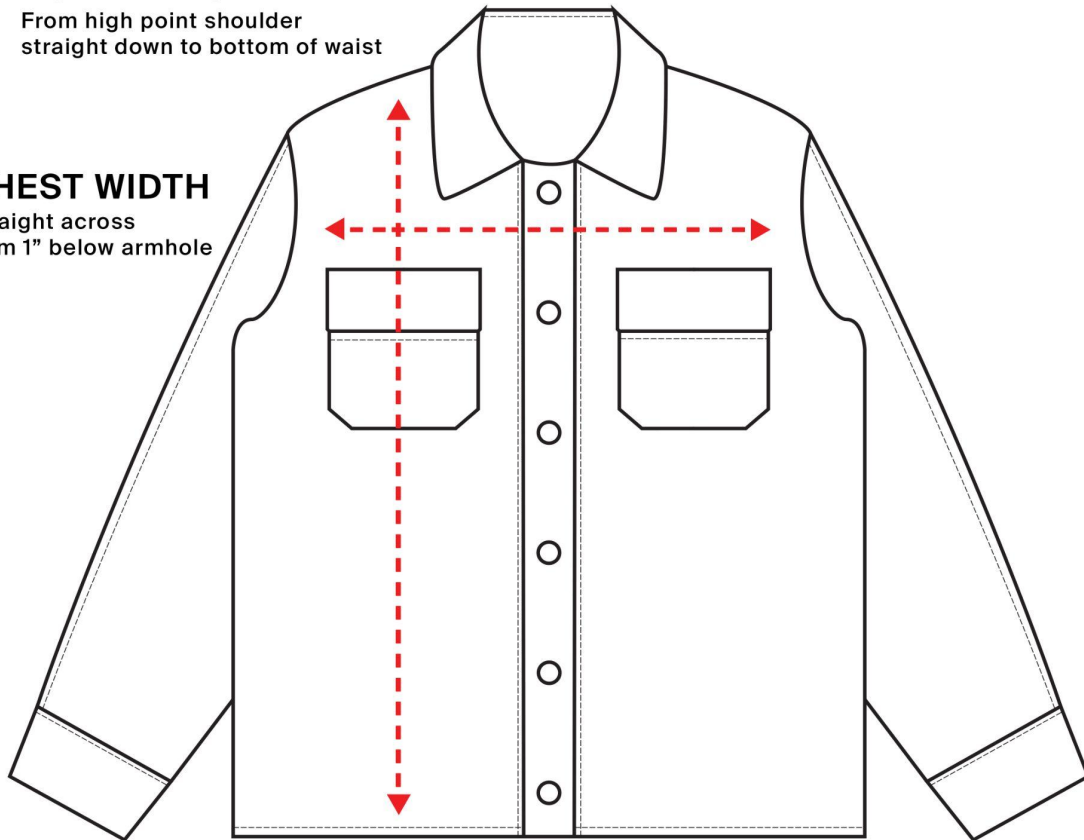
How to read the sizing charts:

BODY LENGTH

From high point shoulder
straight down to bottom of waist

CHEST WIDTH

Straight across
from 1" below armhole



Jacket Sizing

	S	M	L	XL	2XL
Body Length	27 ¼	28	28 ¾	29 ½	30 ¼
Body Width	21 ¼	22 ¾	24 ¼	25 ¾	27 ¼
Sleeve Length	34 ¼	35	36	36 ¾	37 ½

Product measurements may vary by up to 2" (5 cm).