

Sizing Charts

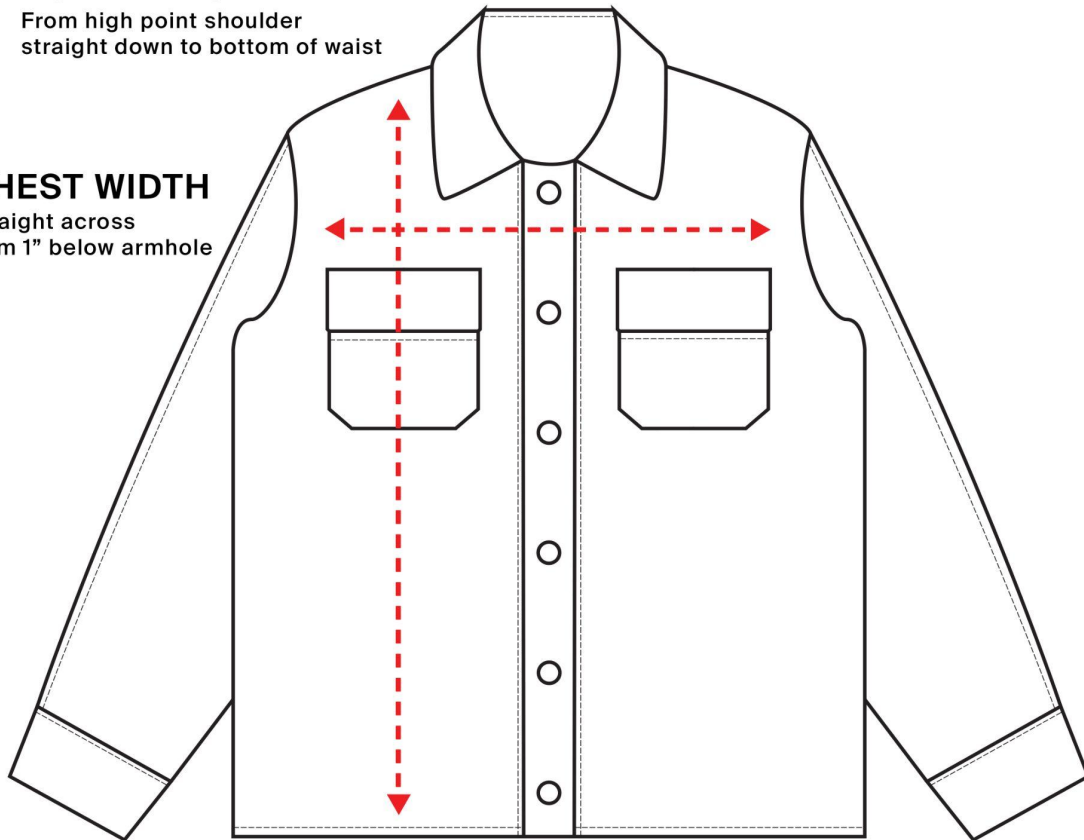
How to read the sizing charts:

BODY LENGTH

From high point shoulder
straight down to bottom of waist

CHEST WIDTH

Straight across
from 1" below armhole



Jacket Sizing

	S	M	L	XL	2XL
Length	27 1/8	28 1/8	29 1/8	30 1/8	31 1/8
1/2 Chest Width	22 1/4	24 1/4	26 1/4	28 1/4	30 1/4

Product measurements may vary by up to 2" (5 cm).