

Sizing Charts

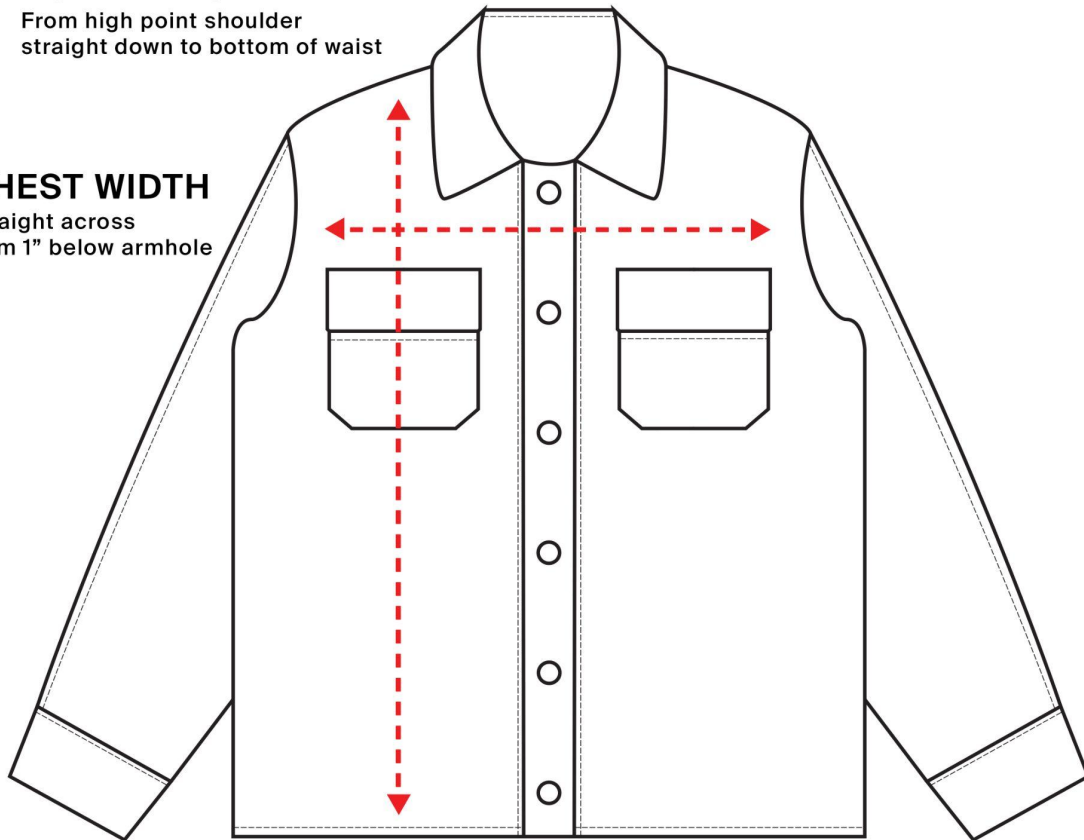
How to read the sizing charts:

BODY LENGTH

From high point shoulder
straight down to bottom of waist

CHEST WIDTH

Straight across
from 1" below armhole



Jacket Sizing

	S	M	L	XL	2XL
Width	19 ½	21 ½	23 ½	25 ½	27
Length	26	26 ½	27	27 ½	28
Sleeve Length	24 ½	24 ¾	25	25 ¼	25 ½

Product measurements may vary by up to 2" (5 cm).