

PRESTIGE 420 F

2024



Email: info@platinmarine.com
Tel: +90 532 449 28 35

PLATIN[®]
MARIN

www.platinmarine.com



BOY/LENGHT

13M



EN/BEAM

4,01M



MAKINE/ENGINE

**CUMMINSX2
380HP**



SAAT/HOURS

90



KABIN/CABINE

2



BAYRAK/FLAG



PROFIL



PROFİL



AFT DECK/ARKA HAVUZLUK



AFT DECK/ARKA HAVUZLUK



AFT DECK/ARKA HAVUZLUK

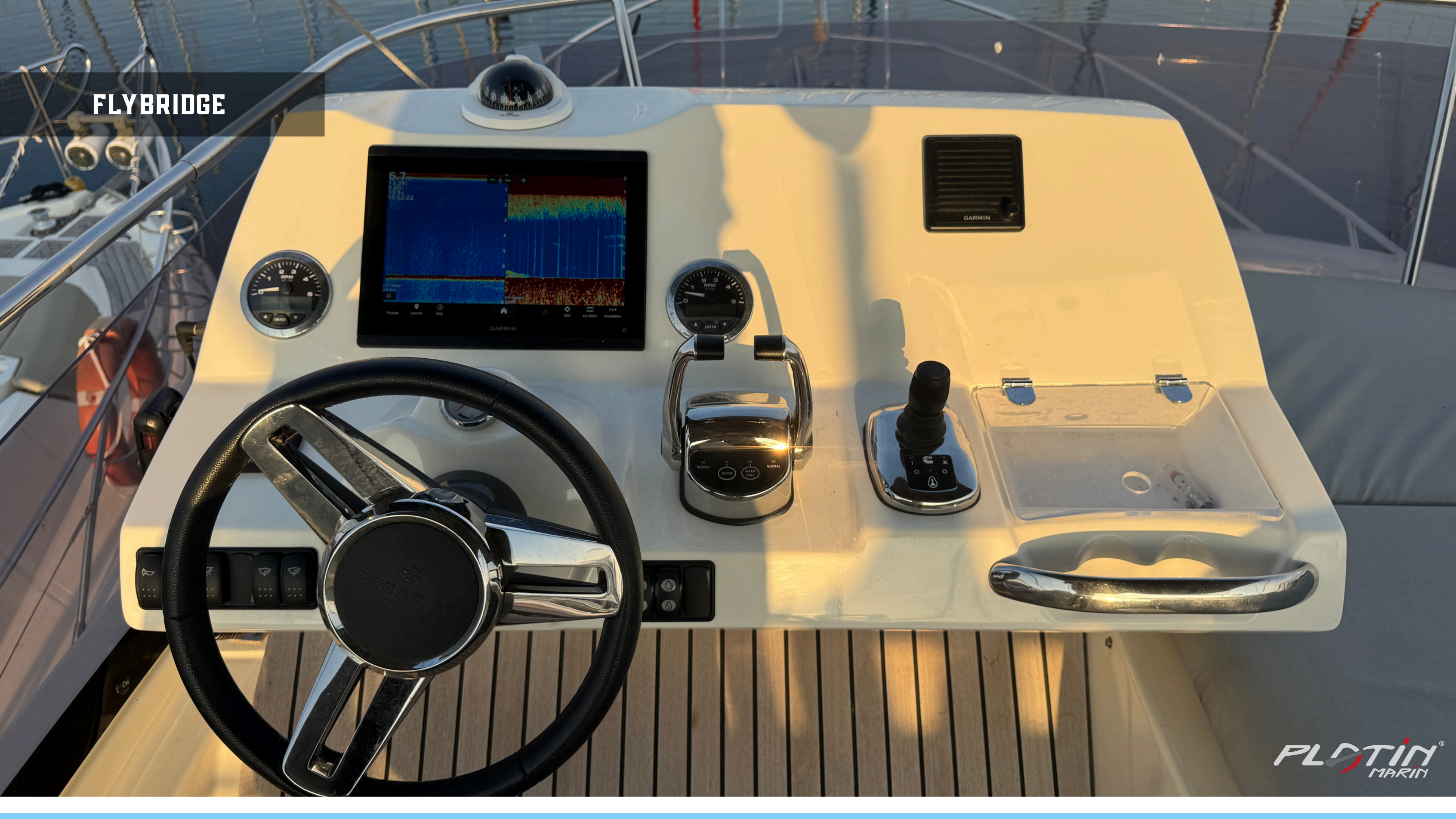


FORE DECK/ÖN GÜVERTE

FLYBRIDGE



FLYBRIDGE



FLYBRIDGE



FLYBRIDGE



FLYBRIDGE



FLYBRIDGE



MAIN SALON/ANA SALON



GALLEY/MUTFAK



GALLEY/MUTFAK



MAIN SALON/ANA SALON



MAIN SALON/ANA SALON



MAIN SALON/ANA SALON



VIP CABIN



VIP CABIN



VIP CABIN ENSUITE



MASTER CABIN



MASTER CABIN



MASTER CABIN



MASTER CABIN ENSUITE



PRESTIGE 420 F

Type / Tip

Motoryat

Flag / Bayrak

İngiltere

Dimensions/ Ölçüler

LOA / Uzunluk

13,00 M

BEAM / En

4,01 M

DRAFT / Derinlik

1,25 M

Gross Tonage / Gros Tonaj

-

Year Built / Üretim Yılı

2024

SPECIFICATIONS / ÖZELLİKLER

Engines/ Makineler	/	2x Cummins QSB6,7 380HP (90 hours)
Max Speed / Maks. Sürat	/	30 Knots
Cruising Speed / Ekonomik Seyir Hızı	/	22 Knots
Tank Capacities/ Tank Kapasiteleri	/	Fuel/Yakıt: 1.170L Water/Su: 500 L
Genarator/ Jenaratör	/	MASE 8.5 Kw
Cabins/Kabinler	/	2 (1 Master / 1 Vip)
Crew / Mürettebat	/	-

EQUIPMENT / EKİPMANLAR

/Joystick

/Baş - Kıç pervane

/Garmin Otopilot

/Hidrolik Dümen Sistemi

/Elektrikli Trim Tabs

/Klima

/Webasto

/Hidrolik Platform

/Zincir Sayacı

/Elektrikli Projektör

/İnvertör 12/2000

/Pervanelerde Halat Kesici

/Elektrikli BBQ

/Ocak, 2x Buzdolabı, Bulaşık Makinesi,TV

/Fusion Ses Sistemi

/Elektrikli Salon Masası

/Fly ve arka havuzluk teak zemin

/Ön cam Phifer



Email: info@platinmarine.com
Tel: +90 532 449 28 35



www.platinmarine.com