

PLATIN[®]
MARIN

BENETEAU SWIFT TRAWLER 50 2013



Email: info@platinmarine.com
Tel: +90 532 449 28 35

PLATIN[®]
MARIN

www.platinmarine.com



BOY/LENGHT

15M



EN/BEAM

4.65M



MAKINE/ENGINE

**VOLVO
PENTA X2
440HP**



SAAT/HOURS

1.761



KABIN/CABINE

3



BAYRAK/FLAG



PROFIL



PROFIL



PROFIL



FORE DECK/ÖN GÜVERTE



FORE DECK / ÖN GÜVERTE



SIDE DECK/YAN GÜVERTE



AFT DECK/ARKA HAVUZLUK



AFT DECK/ARKA HAVUZLUK



PLOTIN
MARIN

FLYBRIDGE



FLYBRIDGE



FLYBRIDGE



FLYBRIDGE



FLYBRIDGE



PLATIN
MARIN

MAIN SALON/ANA SALON



MAIN SALON/ANA SALON



MAIN SALON/ANA SALON



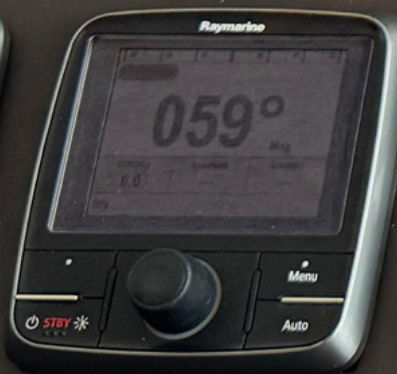
GALLEY/MUTFAK



BRIDGE/KAPTAN KÖŞKÜ



BRIDGE/KAPTAN KÖŞKÜ



VIP CABIN



VIP CABIN



SINGLE CABIN



VIP/SINGLE CABIN ENSUITE



MASTER CABIN



MASTER CABIN



MASTER CABIN



MASTER CABIN ENSUITE



MASTER CABIN ENSUITE



BENETEAU SWIFT TRAWLER 50

Type / Tip Motoryat

Flag / Bayrak Türkiye

Dimensions/ Ölçüler **LOA / Uzunluk** 15 M

BEAM / En 4.65 M

DRAFT / Derinlik 1.00 M

Gross Tonage / Gros Tonaj 39.05

Year Built / Üretim Yılı 2013

SPECIFICATIONS / ÖZELLİKLER

Engines/ Makineler	/	2xVolvo Penta D6 IPS600 440 HP (1.761 hours)
Max Speed / Maks. Sürat	/	25 Knot
Cruising Speed / Ekonomik Seyir Hızı	/	17 Knot
Tank Capacities/ Tank Kapasiteleri	/	Fuel/Yakıt: 2.200 Lt Water/Su: 800 Lt Black Water: 450 Lt
Genarator/ Jenaratör	/	Cummins Onan Jenaratör (11 Kw)
Cabins/Kabinler	/	3 (1 Master / 1 Vip / 1 Single)
Crew / Mürettebat	/	1 Cabin / Wc

EQUIPMENT / EKİPMANLAR

/Raymarine Hybrid Touch Sistem

/Derinlik ölçer

/VHF,GPS,Radar,Otopilot,Chartplotter

/Manyetik Pusula

/Hız göstergesi

/Uydu

/Zincir sayacı

/Ocak

/Fırın

/Buzdolabı

/Derin dondurucu

/Bulaşık Makinesi

/Wesmar Fin Stabilizer

/Cummins Onan 11Kw Jeneratör

/Klima

/Seafari Su yapıcı 120lt/s

/Boiler

/Baş pervane

/Ultra çapa 27 kg

/Hidrolik Platform, Hidrolik Paserella

/24-2500 Inverter

/Arka havuzluk-ön güverte-yan güverte teak zemin

LAYOUT / TEKNİK ÇİZİM

