

# TECHNICAL DATA SHEET

## OFFSET ADJUSTABLE HEAD (TAS30)

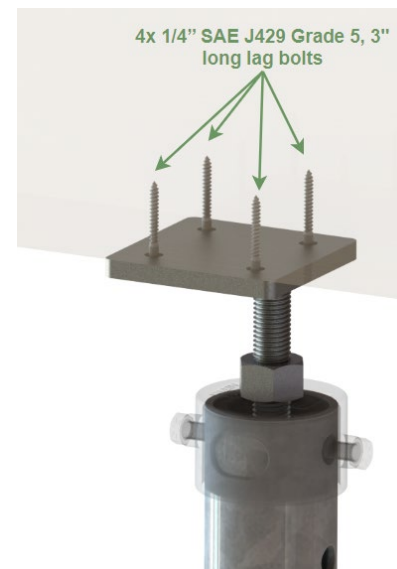


PRODUCT SPECIFICATIONS	
Physical and Chemical Properties	
<b>STEEL GRADE</b>	Conform to CAN/CSA G40.21-350W and/or ASTM A500 grade C standards, or approved equivalent
<b>THREADED ROD &amp; NUT</b>	Conform to ASTM A307M and/or SAE grade 2
<b>ARC WELDING</b>	Conform to CSA W59
<b>ZINC COATING</b>	Conform to ASTM-B633
Models	Standard Dimensional Specifications
<b>TAS30 ADJUSTABLE HEAD</b>	Plate 3 1/2" x 3 1/2" x 1/4" thick, welded to a 6" x 1"Ø threaded rod

The usage and structural capacities of this part must be determined by an engineer, taking into account the applicable conditions and the nature of the structure it supports.

### CONDITIONS OF USE

- TAS adjustable pile heads have an adjustment rod that facilitates the levelling of the structure to be supported.
- This pile head must be used in conjunction with a wind-lift adapter.
- Adjustable heads are designed to support loads in compression and tension only. Should lateral and/or bending loads be applied to the adjustable head, prior approval from an engineer is required.
- Applied loads must be centered on the head plate.
- Under no circumstances should the pile head adjustment allow the threaded rod to be pulled out of the adapter by more than 3" (3" maximum slenderness).
- If the adjustable pile head is to support a hollow column, a steel plate with a minimum thickness of 1/4" must be installed at the base of the column. An engineer's approval is required.



Typical Connection

### NORMATIVE INFORMATION

This Postech pile accessory has undergone rigorous evaluation and testing to verify compliance with the applicable production standards specified above, and in accordance with the ISO-9001 quality management system.

**MANUFACTURER:**  
 Pieux Vistech - Postech Screw Piles  
 10260, Bourque boulevard  
 Sherbrooke QC J1N 0G2  
 Tel.: 819.843.3003  
 Toll free: 1.866.277.4389  
 Fax. : 819.868.0793  
[postechpiles.com](http://postechpiles.com)

### ADVANTAGES

- Product and installation are supplied.
- Can be installed in all climates, weather or ground conditions.
- Allows the adjustment of pile heads.
- The most reliable & economical solution available.
- Reusable and recyclable, environmentally friendly.
- Can be installed under an existing structure.
- No waiting time, you can build as soon as the installation is completed.