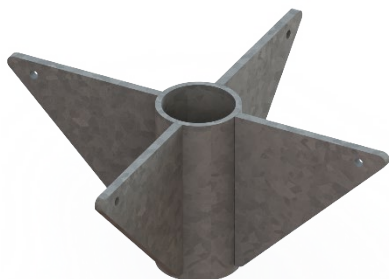


TECHNICAL DATA SHEET

SP4L6-238 PILE STABILIZER



PRODUCT SPECIFICATIONS	
Physical and Chemical Properties	
STEEL GRADE	Conform to CAN/CSA G40.21-350W and/or ASTM A500 class C
WELDING	Conform to CSA W59
HOT DIP GALVANIZATION	Conform to ASTM-A123M
COMPATIBILITY	Compatible with P238 pile
Models	Standard Dimensional Specifications
SP4L6-238 PILE STABILIZER	Round HSS 2 7/8" O.D. x 0.203" tk. With four 6" x 6" welded triangles

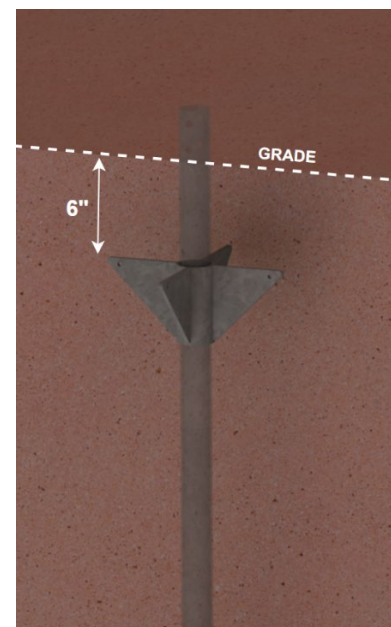
The structural capabilities of this part must be determined by an engineer, taking into account the applicable conditions and the nature of the structure it supports.

CONDITIONS OF USE

Pile stabilizers are used to limit pile head displacement due to lateral loads. The added lateral capacity of the pile should be determined by a competent engineer.

INSTALLATION METHOD

- The stabilizer should be inserted over the installed pile shaft and driven in until it is between 6" and 12" below the existing grade.
- If driving is not possible and excavation is required to install the stabilizer to a sufficient depth, the hole must be filled and the backfilled soil compacted so that the stabilizer can provide lateral support to the pile.
- Unless otherwise specified, the stabilizer must not be bolted to the pile to allow vertical movement during the freeze-thaw period.




Recommended assembly

NORMATIVE INFORMATION

This Postech pile accessory has undergone rigorous evaluation and testing to verify compliance with the applicable production standards specified above, and in accordance with the ISO-9001 quality management system.

MANUFACTURER:
 Pieux Vistech - Postech Screw Piles
 10260, Bourque boulevard
 Sherbrooke QC J1N 0G2
 Tel.: 819.843.3003
 Toll free: 1.866.277.4389
 Fax. : 819.868.0793
postechpiles.com

ADVANTAGES

- Product and installation are supplied.
- Can be installed in all climates, weather or ground conditions.
- Allows the adjustment of pile heads.
- The most reliable & economical solution available.
- Reusable and recyclable, environmentally friendly. 
- Can be installed under an existing structure.
- No waiting time, you can build as soon as the installation is completed.