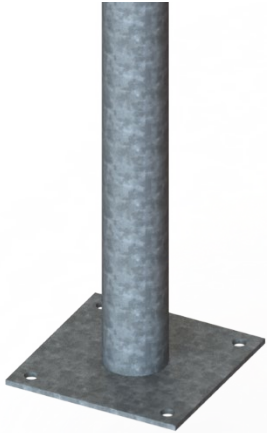


# TECHNICAL DATA SHEET

## RA312L7-10 ROCK ANCHOR



PRODUCT SPECIFICATIONS	
Physical and Chemical Properties	
<b>STEEL GRADE</b>	Conform to CAN/CSA G40.21-350W and/or ASTM A500 class C
<b>WELDING</b>	Conform to CSA W59
<b>HOT DIP GALVANIZATION</b>	Conform to ASTM-A123M
<b>RECOMMENDED ANCHOR</b>	4x chemical anchors 5/8" diam. x 8" lg, type HILTI HIT-RE 500 or equivalent
Models	Standard Dimensional Specifications
<b>RA312L7-10 ANCHOR</b>	3 1/2" diam. tube welded to a 10" x 5/16" square plate.

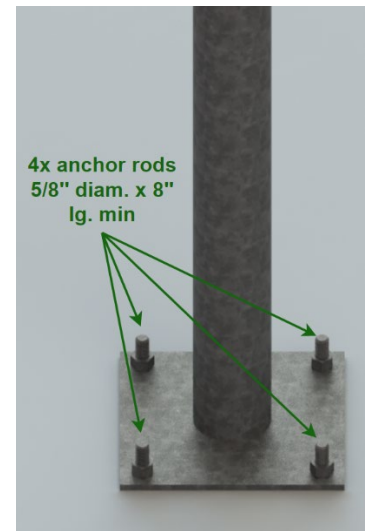
The usage and structural capacities of this part must be determined by an engineer, taking into account the applicable conditions and the nature of the structure it supports.

### CONDITIONS OF USE

Rock anchors are used to support structures in situations where the depth of the rock stratum (bedrock) is too shallow for a screw pile to be installed. These anchors must be installed in unweathered bedrock.

### INSTALLATION METHOD

- EXCAVATE SOIL IN PLACE UP TO THE BEDROCK LEVEL.
- CLEAN THE BEDROCK SURFACE.
- MAKE THE BEDROCK SURFACE HORIZONTAL. A 10° MAXIMUM SLOPE IS PERMITTED ON THE BEDROCK SURFACE.
- DRILL 4 HOLES AS INDICATED ON THE PLATE PER ANCHOR MANUFACTURER'S INSTRUCTIONS.
- INSTALL ANCHORS FOLLOWING THE INSTRUCTIONS OF THE MANUFACTURER
- TIGHTEN PROGRESSIVELY AND ALTERNATELY EACH ROD, TO ENSURE A BETTER CONTACT OF THE ANCHOR PLATE ON THE ROCK.
- FILL AND COMPACT EXCAVATED SOIL AROUND THE ANCHOR TUBE.
- 8. CUT THE UNUSED PORTION OF TUBE TO REQUIRED LEVEL.




Recommended Connection

### NORMATIVE INFORMATION

This Postech pile accessory has undergone rigorous evaluation and testing to verify compliance with the applicable production standards specified above, and in accordance with the ISO-9001 quality management system.

### ADVANTAGES

- Product and installation are supplied.
- Can be installed in all climates, weather or ground conditions.
- Allows the adjustment of pile heads.
- The most reliable & economical solution available.
- Reusable and recyclable, environmentally friendly. 
- Can be installed under an existing structure.
- No waiting time, you can build as soon as the installation is completed.

**MANUFACTURER:**  
 Pieux Vistech - Postech Screw Piles  
 10260, Bourque boulevard  
 Sherbrooke QC J1N 0G2  
 Tel.: 819.843.3003  
 Toll free: 1.866.277.4389  
 Fax. : 819.868.0793  
[postechpiles.com](http://postechpiles.com)