

TECHNICAL DATA SHEET

FEX312 FIELD EXTENSION



PRODUCT SPECIFICATIONS		
Physical and Chemical Properties		
STEEL GRADE	Conform to CAN/CSA G40.21-350W and/or ASTM A500 class C	
HOT DIP GALVANIZATION	Conform to ASTM-A123M	
RECOMMENDED HARDWARE	ASTM A325 or SAE J429 Grade 5 bolts	
Standard Dimensional Specifications		
COUPLER PROPERTIES	HSS 4" O.D. x 0.226" wall tk. x 10 1/8" long round shaft	
CONNECTED SHAFT	HSS 3 1/2" O.D. x 0.216" wall tk. round shaft	
COMPATIBILITY	Compatible with P312 piles & EX312 extensions	
PILE CONNECTION	Must be connected by four 3/4" diameter structural bolts	
Structural Capacities	ULS ⁽¹⁾	SLS ⁽¹⁾
MAX. COMPRESSION CAPACITY ⁽²⁾	350 kN (78600 lb)	260 kN (58400 lb)
MAX. TENSION CAPACITY ⁽²⁾	175 kN (39300 lb)	130 kN (29200 lb)
BENDING CAPACITY	10,8 kN.m (7900 lb.ft)	8 kN.m (5900 lb.ft)
MAXIMUM INSTALLATION TORQUE	13695 N.m (10100 lb.ft)	-

(1): ULS = Ultimate Limit State; SLS = Service Limit State.

(2): The specified capacities are only applicable to the steel assembly where the extension is supported laterally. In all cases, the mechanical capacity of the extension must be validated by a licensed engineer, and with considerations for column buckling if installed in liquifying soils, peats or bogs

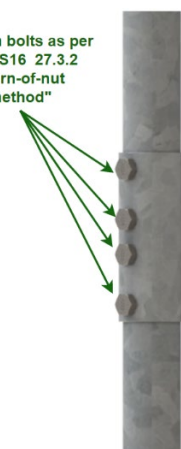
DESIGN INFORMATION

This coupler can be used to extend the length of a pile shaft when the use of a standard extension is not preferable. The add-on shaft must be bearing on the pile with no gaps between the tubes.

BEARING CAPACITY

Postech products are designed to bear compressive and tension loads. The design of the shaft depend on the load and on the bearing capacity of the soil. The monitoring of the applied torque on-site allows for the confirmation of the bearing capacity of the soil. All capacities listed on this data sheet must be applied at the pile head less than 0.3 m (1 ft) above ground.

Tighten bolts as per
CSA S16 27.3.2
"Turn-of-nut
method"



Recommended Connection

NORMATIVE INFORMATION

This Postech pile accessory has been the subject of calculations and/or physical tests. The aim of this work is to validate the mechanical resistance of the part. In accordance with CCMC technical guide TG-316216.01-15, referring to the National Building Code (NBC), and in compliance with the ISO-9001 quality management system.

MANUFACTURER:

Pieux Vistech - Postech Screw Piles
10260, Bourque boulevard
Sherbrooke QC J1N 0G2
Tel.: 819.843.3003
Toll free: 1.866.277.4389
Fax. : 819.868.0793
postechpiles.com

ADVANTAGES

- Product and installation are supplied.
- Can be installed in all climates, weather or ground conditions.
- Allows the adjustment of pile heads.
- The most reliable & economical solution available.
- Reusable and recyclable, environmentally friendly.
- Can be installed under an existing structure.
- No waiting time, you can build as soon as the installation is completed.

