

# TECHNICAL DATA SHEET

## EX238 PILE EXTENSIONS



PRODUCT SPECIFICATIONS		
Physical and Chemical Properties		
STEEL GRADE	Conform to CAN/CSA G40.21-350W and/or ASTM A500 class C	
WELDING	Conform to CSA W59	
HOT DIP GALVANIZATION	Conform to ASTM-A123M	
RECOMMENDED HARDWARE	ASTM A325 or SAE J429 Grade 5 bolts	
Standard Dimensional Specifications		
SHAFT PROPERTIES	HSS 2 3/8" O.D. x 0.154" wall tk. round shaft	
COUPLER PROPERTIES	HSS 2 7/8" O.D. x 0.203" wall tk. round shaft	
STANDARD LENGTHS	Available in standard lengths of 3', 5', 7' & 10'	
COMPATIBILITY	Compatible with P238 piles	
PILE CONNECTION	Must be connected by two 1/2" diameter structural bolts	
Structural Capacities		ULS <sup>(1)</sup>
MAX. COMPRESSION CAPACITY <sup>(2)</sup>		135 kN (30300 lb)
MAX. TENSION CAPACITY <sup>(2)</sup>		140 kN (31400 lb)
BENDING CAPACITY		3,5 kN.m (2500 lb.ft)
MAXIMUM INSTALLATION TORQUE		4850 N.m (3580 lb.ft)
		SLS <sup>(1)</sup>
		100 kN (22400 lb)
		105 kN (23600 lb)
		2,5 kN.m (1800 lb.ft)
		-

(1): ULS = Ultimate Limit State; SLS = Service Limit State.

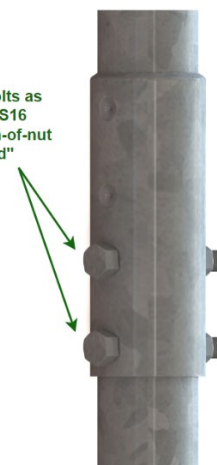
(2): The specified capacities are only applicable to the steel assembly where the extension is supported laterally. In all cases, the mechanical capacity of the extension must be validated by a licensed engineer, and with considerations for column buckling if installed in liquifying soils, peats or bogs

### DESIGN INFORMATION

#### BEARING CAPACITY

Postech products are designed to bear compressive and tension loads. The design of the shaft depends on the load and on the bearing capacity of the soil. The monitoring of the applied torque on-site allows for the confirmation of the bearing capacity of the soil. All capacities listed on this data sheet must be applied at the pile head less than 0.3 m (1 ft) above ground.

Tighten bolts as per CSA S16 27.3.2 "Turn-of-nut method"



Recommended Connection

### NORMATIVE INFORMATION

This Postech pile accessory has been the subject of calculations and/or physical tests. The aim of this work is to validate the mechanical resistance of the part. In accordance with CCMC technical guide TG-316216.01-15, referring to the National Building Code (NBC), and in compliance with the ISO-9001 quality management system.

#### MANUFACTURER:

Pieux Vistech - Postech Screw Piles  
10260, Bourque boulevard  
Sherbrooke QC J1N 0G2  
Tel.: 819.843.3003  
Toll free: 1.866.277.4389  
Fax. : 819.868.0793

postechpiles.com

### ADVANTAGES

- Product and installation are simplified.
- Can be installed in all climates, weather or ground conditions.
- Allows the adjustment of pile heads.
- The most reliable & economical solution available.
- Reusable and recyclable, environmentally friendly.
- Can be installed under an existing structure.
- No waiting time, you can build as soon as the installation is completed.

