

TECHNICAL DATA SHEET

EF24 FOUNDATION SUPPORT



PRODUCT SPECIFICATIONS	
Physical and Chemical Properties	
STEEL GRADE	Conform to CAN/CSA G40.21-350W and/or ASTM A500 class C
WELDING	Conform to CSA W59
HOT DIP GALVANIZATION	Conform to ASTM-A123M
RECOMMENDED HARDWARE	Conform to ASTM A325 or SAE J429 Grade 5
Models	Standard Dimensional Specifications
EF24 SUPPORT	HSS square tubes 2,5" x 18" lg. x 3/16" tk. welded to angle iron 3" x 3" x 3/16" th. x 24" lg.

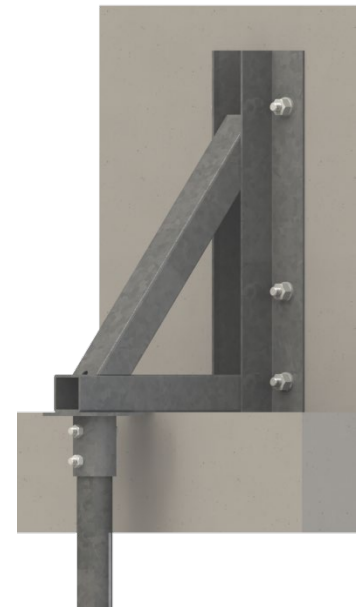
The usage and structural capacities of this part must be determined by an engineer, taking into account the applicable conditions and the nature of the structure it supports.

NORMATIVE INFORMATION

This Postech pile accessory has undergone rigorous evaluation and testing to verify compliance with the applicable production standards specified above, and in accordance with the ISO-9001 quality management system.

CONDITIONS OF USE

- EF24 foundation supports are ideal for supporting pre-existing concrete structures.
- The six (6) concrete anchors and support pile must be specified by the project engineer with consideration for the loads supported by the bracket.
- The support pile must be aligned with the junction of the diagonal member and the horizontal member.
- Applications with concrete beams or structural slabs must be approved by the project engineer.
- It is the designer's responsibility to validate the shear at the supports when connecting to a concrete beam.



Typical connection detail

ADVANTAGES

- Product and installation are supplied.
- Can be installed in all climates, weather or ground conditions.
- Allows the adjustment of pile heads.
- The most reliable & economical solution available.
- Reusable and recyclable, environmentally friendly.
- Can be installed under an existing structure.
- No waiting time, you can build as soon as the installation is completed.

MANUFACTURER:
 Pieux Vistech - Postech Screw Piles
 10260, Bourque boulevard
 Sherbrooke QC J1N 0G2
 Tel.: 819.843.3003
 Toll free: 1.866.277.4389
 Fax. : 819.868.0793
postechpiles.com