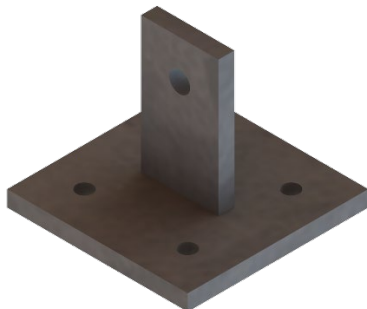


TECHNICAL DATA SHEET

BCA-BCU BRACING PLATE

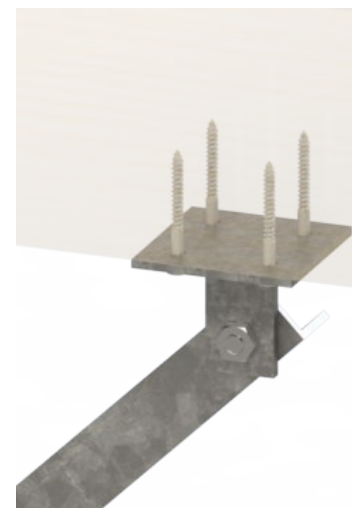


PRODUCT SPECIFICATIONS	
Physical and Chemical Properties	
STEEL GRADE	Conform to CAN/CSA G40.21-350W and/or ASTM A500 class C
WELDING	Conform to CSA W59
HOT DIP GALVANIZATION	Conform to ASTM-A123M
RECOMMENDED HARDWARE	Conform to ASTM A325 or SAE J429 Grade 5
Models	Standard Dimensional Specifications
BCA-BCU CONNECTION PLATE	Square plate 3.5" x 3/16" thick welded to a plate 1.5" x 2 5/8" x 1/4" thick.

The usage and structural capacities of this part must be determined by an engineer, taking into account the applicable conditions and the nature of the structure it supports.

CONDITIONS OF USE

- BCA bracing kits can be used to brace piles and prevent tube buckling when their above-grade height exceeds 12" (0.305 m).
- BCA-F angles come in standard 10' lengths and can be field-cut to required lengths.
- 3/8" diameter bolts are recommended to connect BCA-F to BCA-K238, BCA-K312 or BCA-BCU.
- BCA-BCU plates are designed to be anchored to a structural wood beam with 4x 1/4" diam. lag bolts specified by the project engineer.
- BCA-K238 & BCA-K312 brackets must be fastened to the piles by tightening the U-bolts on the pile tubes.
- It is recommended that braces be installed at a minimum angle of 30 degrees to the horizontal to ensure their effectiveness.




Typical connection detail

NORMATIVE INFORMATION

This Postech pile accessory has undergone rigorous evaluation and testing to verify compliance with the applicable production standards specified above, and in accordance with the ISO-9001 quality management system.

MANUFACTURER:
 Pieux Vistech - Postech Screw Piles
 10260, Bourque boulevard
 Sherbrooke QC J1N 0G2
 Tel.: 819.843.3003
 Toll free: 1.866.277.4389
 Fax. : 819.868.0793
postechpiles.com

ADVANTAGES

- Product and installation are supplied.
- Can be installed in all climates, weather or ground conditions.
- Allows the adjustment of pile heads.
- The most reliable & economical solution available.
- Reusable and recyclable, environmentally friendly. 
- Can be installed under an existing structure.
- No waiting time, you can build as soon as the installation is completed.