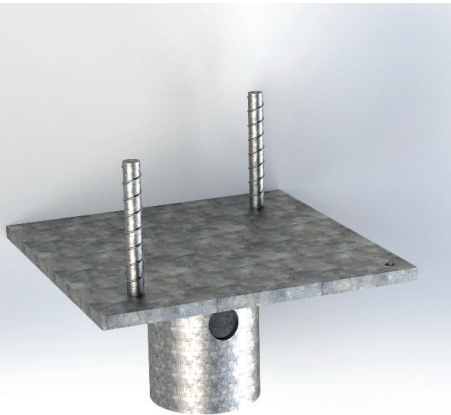


TECHNICAL DATA SHEET

CONCRETE FIXED HEAD (TFC8-238E-312i)



PRODUCT CHARACTERISTICS

Physical and Chemical properties

STEEL GRADE	Conform to CAN/CSA G40.21-350W and/or ASTM A500 grade C standards
ARC WELDING	Conform to CSA W59
GALVANIZATION	Conform to ASTM-A123 / A123M
BOLT CONNECTION	Conform to ASTM-A325 / ASTM-F3125

Model	Standard characteristics
TFC8-238E-312i	Plate 8" x 8" x 5/16", welded to a 2 7/8" Ø x 3 1/2" lg. tube

Mechanical resistance - with P312 pile

EFFORTS	ULS ⁽¹⁾	SLS ⁽¹⁾
Compression in kN (lbs) ⁽²⁾	250 (56 200)	200 (45 000)
Tension in kN (lbs) ⁽²⁾	80 (18 000)	45 (10 100)

(1): ULS = Ultimate limit state ; SLS = Service limit state

(2): The resistances presented in this table represents the maximum capacities of the pile head's steel assembly when connected to a pile shaft with a diameter of an 89 mm (3 1/2").

CONDITIONS OF USE

Concrete fixed heads are ideal for connecting concrete structures to screw piles.

The TFC8_238E-312i head can be connected to a pile with a 89 mm (3 1/2 ") or 60 mm (2 3/8 ") shaft.

Fixed concrete heads must be fixed to the pile to prevent them from being slightly lifted by the concrete during its implementation.

In order to bear tension loads, fixed concrete heads must be bolted to the pile. When bolting, the holes drilled in the head and on the upper part of the pile shaft should be used.

The head plate must be completely embedded in the concrete with a minimum coating of 100 mm (4 ").

It is the project engineer's responsibility to check one way shear in concrete beam applications.

CCMC
13102-R



NORMATIVE INFORMATION

Postech screw pile accessories have been calculated and tested on-site by an engineering firm recognized by the CCMC. The purpose of these tests was to validate the mechanical resistance of Postech accessories.

MANUFACTURER:
Pieux Vistech - Postech Screw Piles
10260, Bourque boulevard
Sherbrooke QC J1N 0G2
Tel. : 819.843.3003
Toll free: 1.866.277.4389
Fax. : 819.868.0793

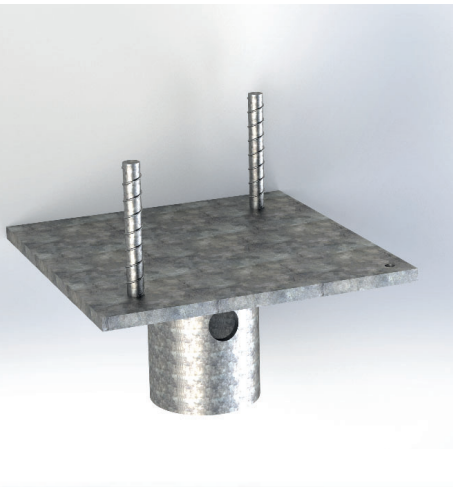
postech-foundations.com

ADVANTAGES

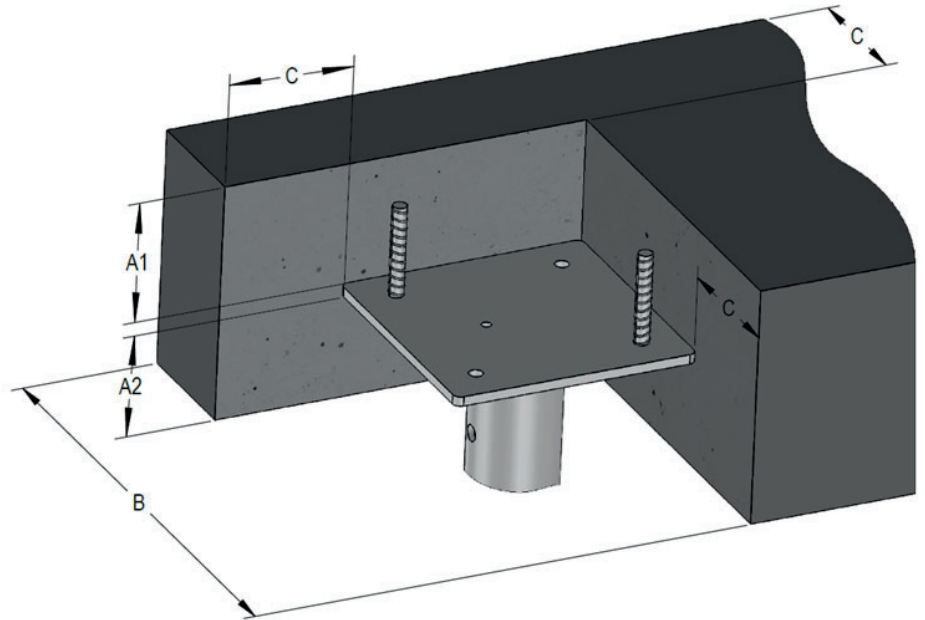
- Product and installation are supplied;
- Can be installed in all climates, weather or ground conditions;
- The most reliable & economical solution available;
- Reusable and recyclable, environmentally friendly;
- Can be installed under an existing structure;
- No waiting time, you can build as soon as the installation is completed.

TECHNICAL DATA SHEET

CONCRETE FIXED HEAD (TFC8-238E-312i)



ALLOWABLE LOADS WITH CONCRETE (SLS)



FOR COMPRESSION LOADS

Dimensions		Allowable loads for given concrete grade and dimensions - with P312 pile			
A1 / C	B	20 MPa (2900 Psi)	25 MPa (3625 Psi)	30 MPa (4350 Psi)	35 MPa (5075 Psi)
(in)	(in)	kN (Lbs)	kN (Lbs)	kN (Lbs)	kN (Lbs)
4	16	51 (11 550)	57 (12 920)	62 (14 150)	67 (15 280)
5	18	59 (13 450)	74 (16 810)	85 (19 160)	92 (20 700)
6	20	59 (13 450)	74 (16 810)	89 (20 170)	104 (23 530)

FOR TENSION LOADS

Dimensions		Allowable loads for given concrete grade and dimensions - with P312 pile			
A2 / C	B	20 MPa (2900 Psi)	25 MPa (3625 Psi)	30 MPa (4350 Psi)	35 MPa (5075 Psi)
(in)	(in)	kN (Lbs)	kN (Lbs)	kN (Lbs)	kN (Lbs)
4	16	21 (4 810)	23 (5 380)	26 (5 900)	28 (6 370)
5	18	35 (7 940)	39 (8 880)	43 (9 730)	46 (10 510)
6	20	48 (10 830)	48 (10 830)	48 (10 830)	48 (10 830)

For designs requiring higher loads than those in these concrete allowable loads tables, an engineer must validate the design.

CCMC
13102-R



NORMATIVE INFORMATION

Postech screw pile accessories have been calculated and tested on-site by an engineering firm recognized by the CCMC. The purpose of these tests was to validate the mechanical resistance of Postech accessories.

MANUFACTURER:
Pieux Vistech - Postech Screw Piles
10260, Bourque boulevard
Sherbrooke QC J1N 0G2
Tel. : 819.843.3003
Toll free: 1.866.277.4389
Fax. : 819.868.0793

postech-foundations.com