

 **Perfect Zero**
Y-Axis Adjustment Sleeve

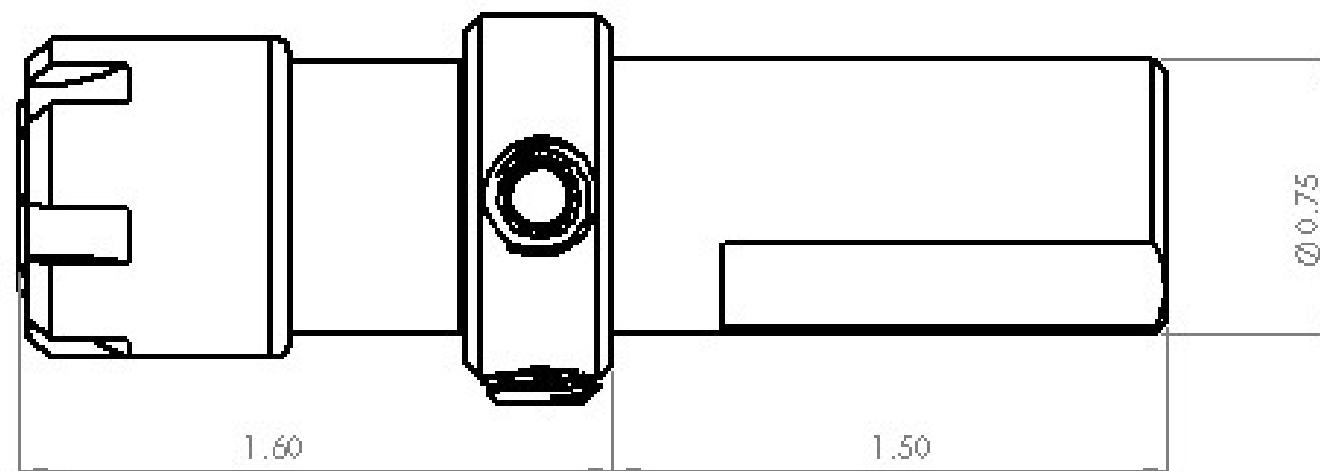
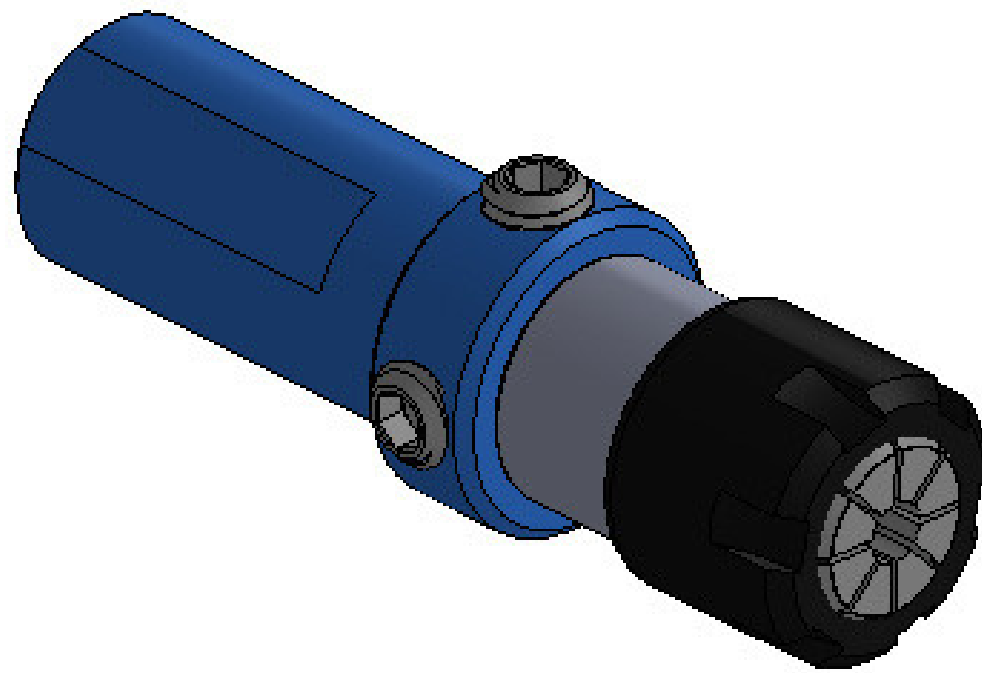
The perfect addition for
your Perfect Zero camera

info@theory168.com
www.theory168.com
608-218-4018



Perfect Zero

Y-Axis Adjustment Sleeve



400-1320 .75" Diameter (As Shown)
400-1321 1" Diameter

Key Values:

- Gives Swiss machines the ability to adjust a different axis on the sub spindle
- Simple to adjust with the Perfect Zero camera
- Decreases setup time from previous methods
- Coolant through 1/8" NPT side connection
- Common ER16 Taper and M style nut threads

This collet sleeve has been designed to give a very adjustable way to set the Y axis on swiss machines. Combined with your Perfect Zero camera system, this tool allows to positionally align collet clamped tools. Holder has a collet holding taper that is .008" off center. Loosen the set screws and rotate the holder until the Y axis is perfectly center. Tighten set screws. Adjust the X axis to center and make offset in your machine.



info@theory168.com
www.theory168.com
608-218-4018