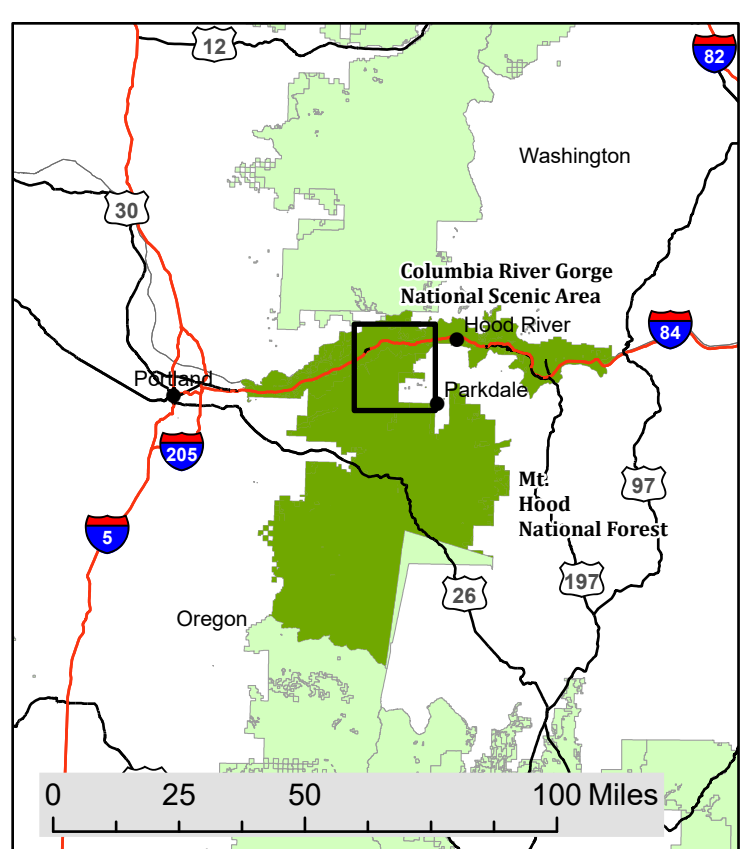


Whisky Creek Fire Closure Exhibit A

Columbia River Gorge National Scenic Area and Mt. Hood National Forest

Forest Order Number: 06-06-06-24-13



| | | | |
|------------------------|-----------------------------------|-------------------------|-------------------------------|
| Area Closure | Open Recreation Site | USA Major Highways | Other Federal Land |
| Closed Road | Campground | Interstate Highway | State Land |
| Closed Recreation Site | Trailhead | US Highway | Other Land, Including Private |
| Campground | Trail | State Highway and Route | Lake / Pond |
| Camping Area | NFS Roads | Other Major Road | Reservoir |
| Trailhead | Roads Suitable for Passenger Cars | Other Minor Roads | Wilderness |
| | High Clearance Vehicles | Railroad | National Forest Land |
| | | Stream / River | Closed Trail |



U.S. Forest Service
Department of Agriculture

This product is reproduced from information prepared by the USDA, Forest Service or from other suppliers. The Forest Service cannot assure the reliability or suitability of this information for a particular purpose. The data and product accuracy may vary due to compilation from various sources, including modeling and interpretation, and may not meet National Map Accuracy Standards. This information may be updated, corrected or otherwise modified without notification. The USDA is an equal opportunity provider and employer.