

legs dimentions

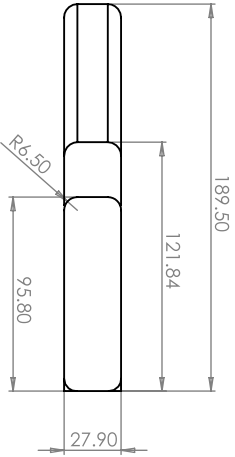
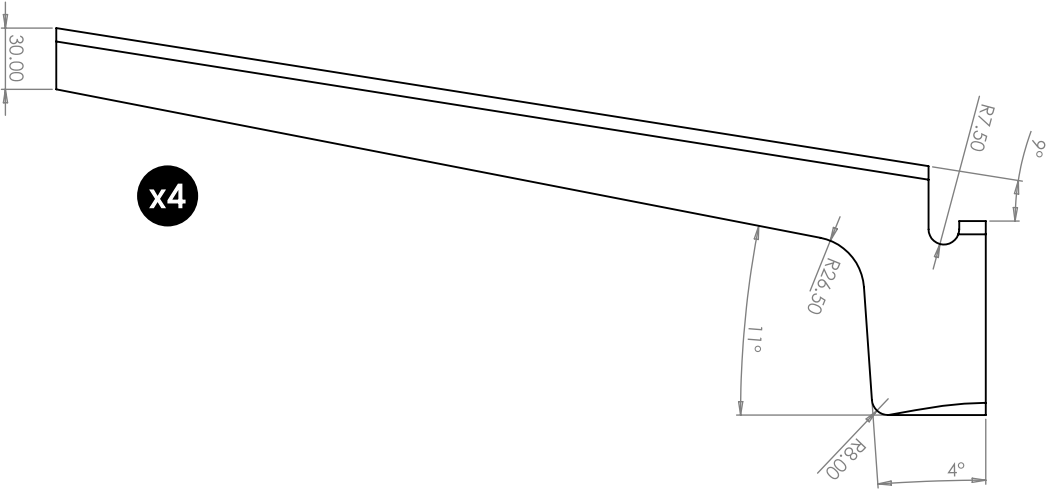
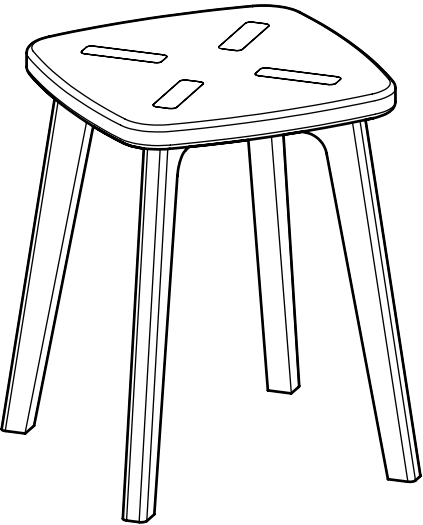
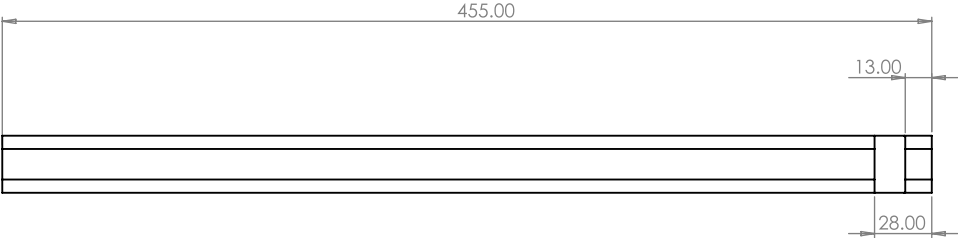
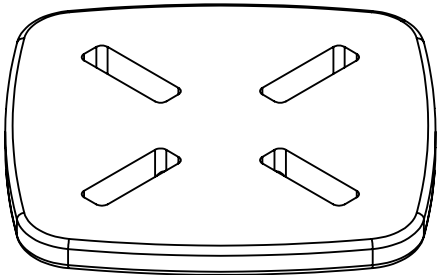
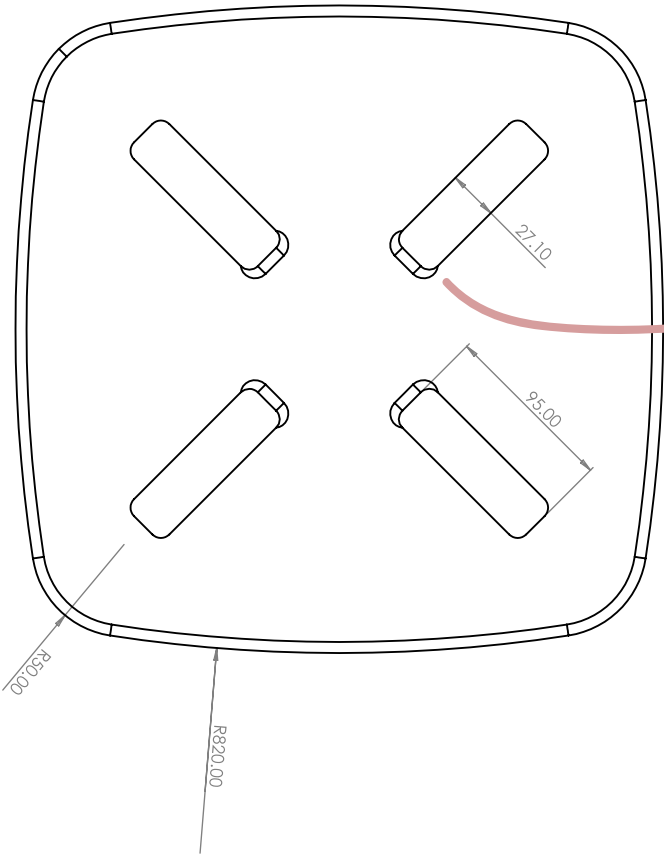
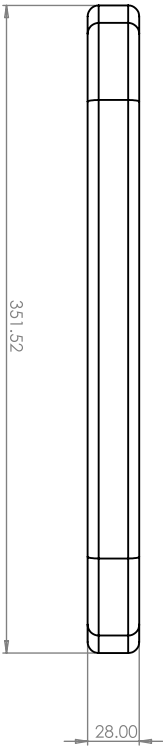
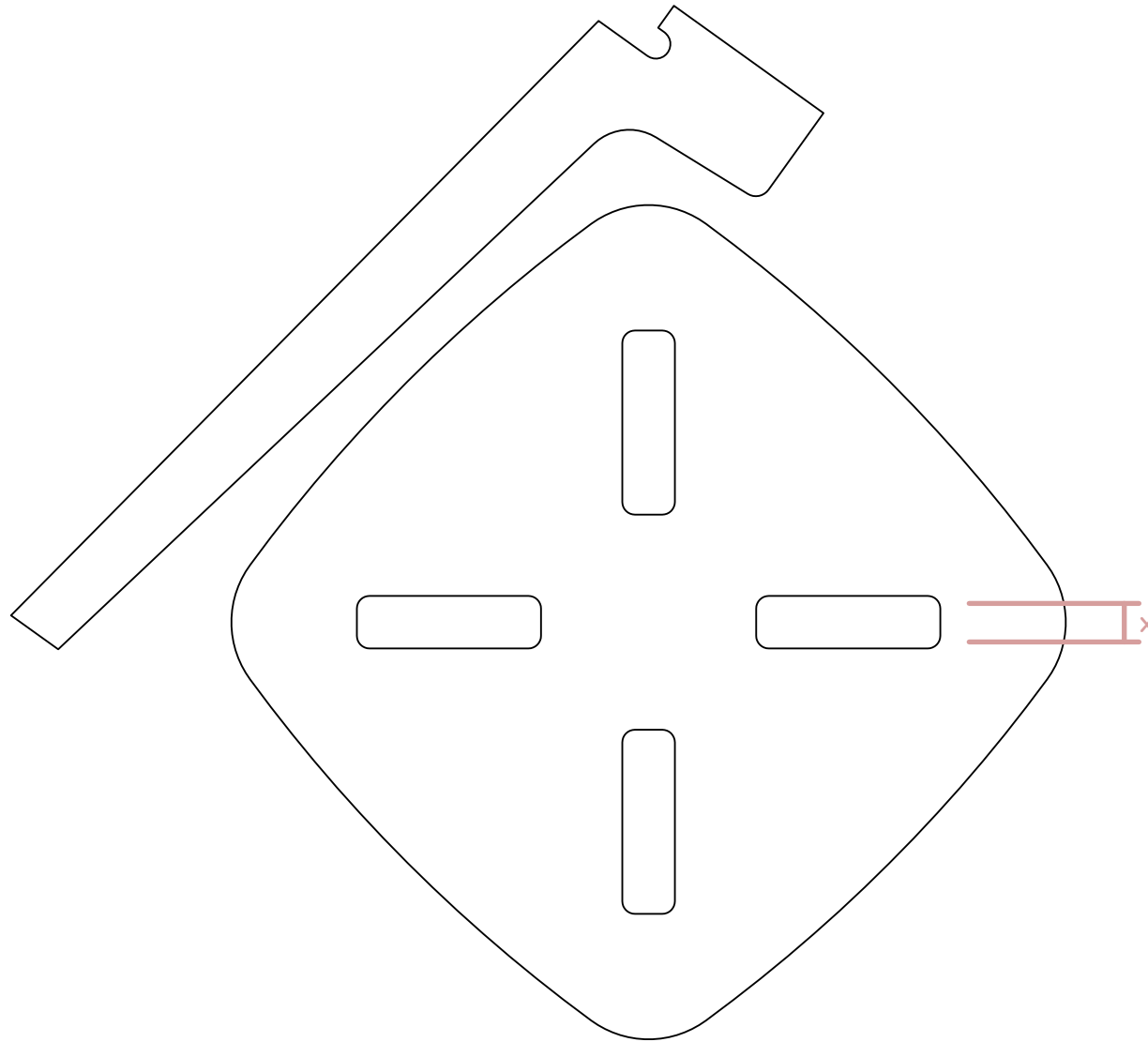


Table top dimentions



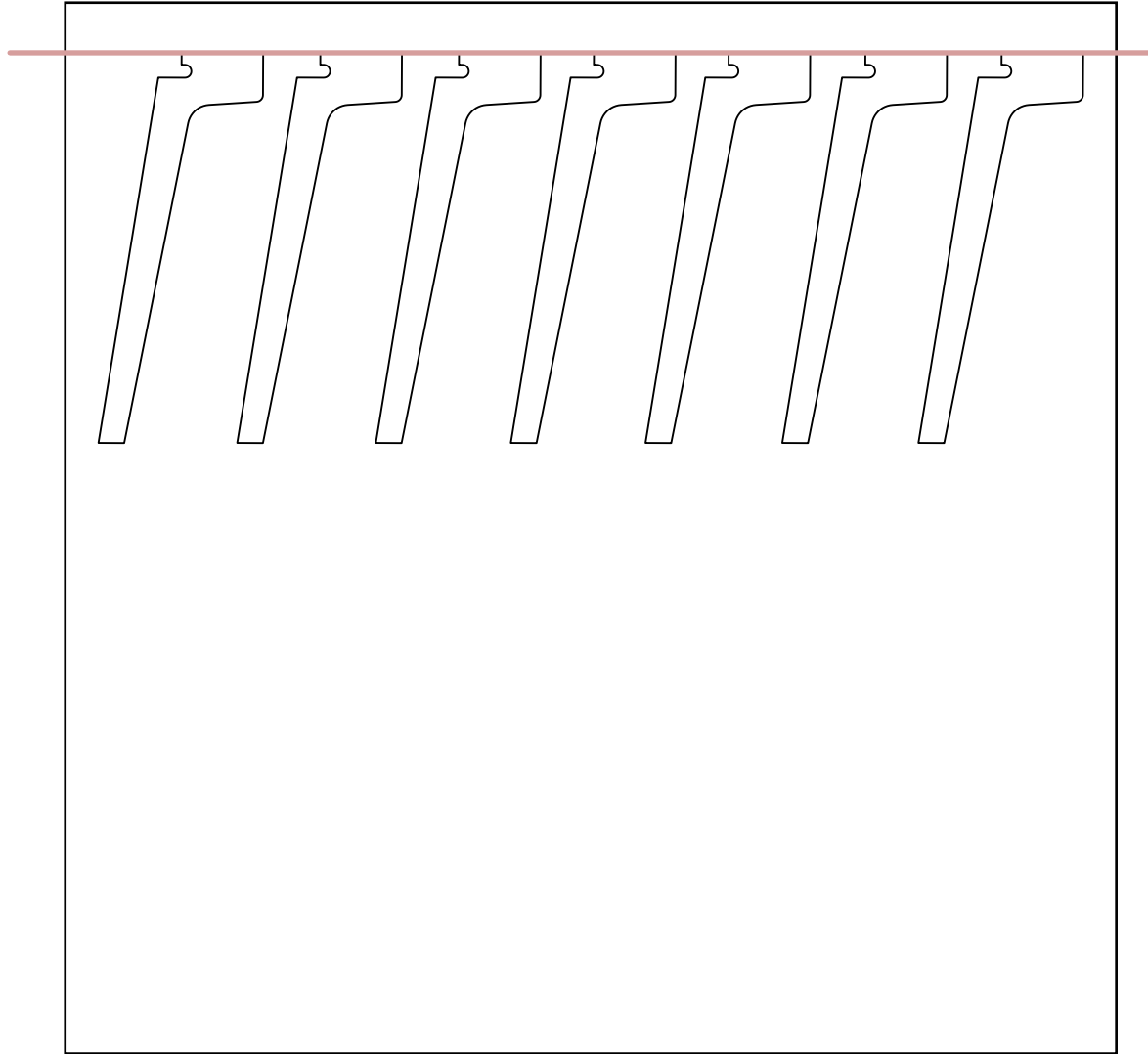
route only the bottom part

Laser cut files



Dimension susceptible to change depending on the thickness of the sheet ($x = \text{Thickness} - 0.9\text{mm}$)

alignment of the legs when sheet is uneven



Find the spot with the desired thickness you are looking for. Make sure you find a spot is consistent all over the sheet and draw a line. Place the legs facing the upper part to the line in order to guarantee they all fit right to your jigs.