

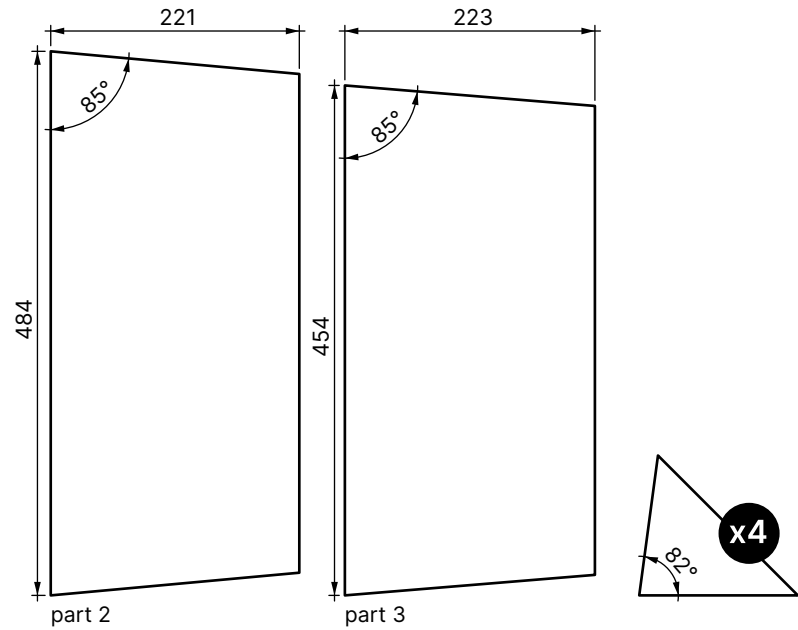
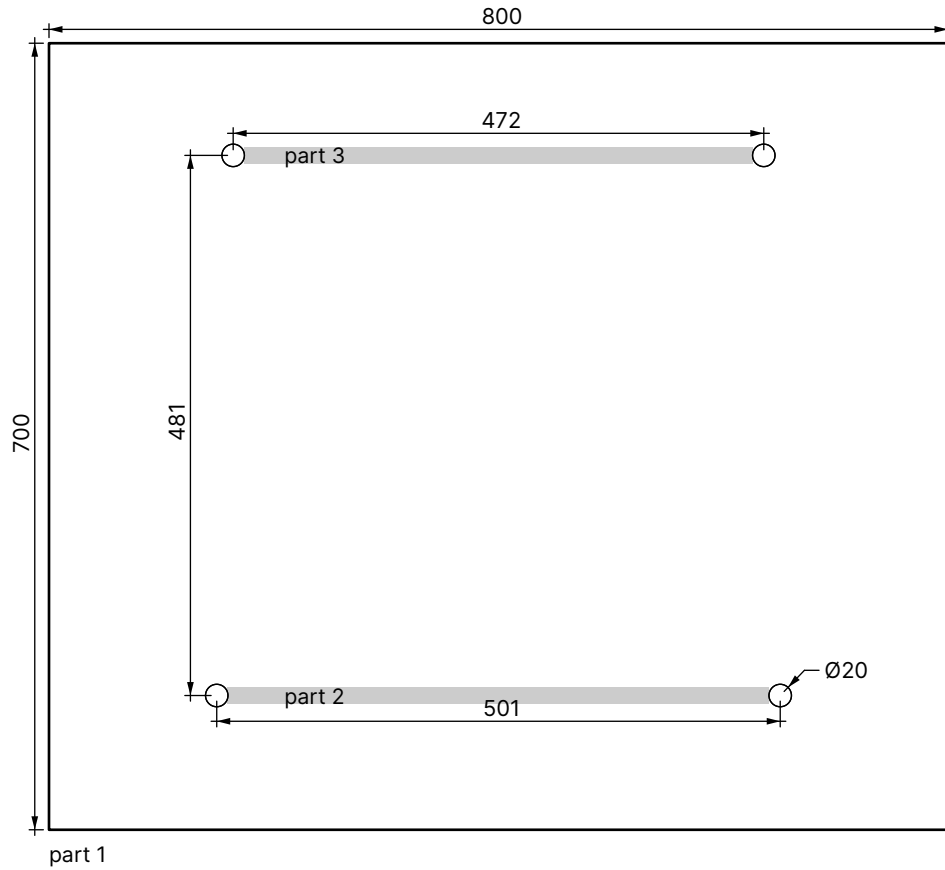
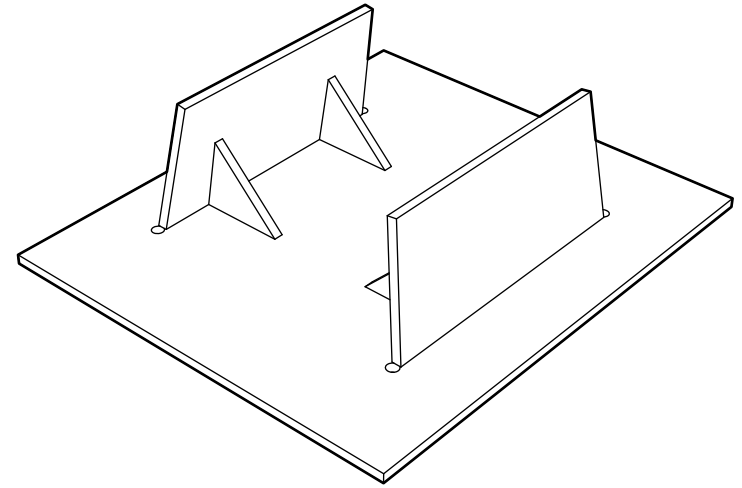
part list moulds and jigs

#	assembly	qty	material	dimensions
1	leg alignment	1	—	700×800mm
2	leg alignment	1	16mm plywood	484×221mm
3	leg alignment	1	16mm plywood	454×223mm
4	leg bending jig	1	16mm plywood	650×880mm
5	leg bending angle	1	16mm plywood	500×300mm
6	cross brace jig	2	16mm plywood	180×100mm
7	cross brace jig	2	16mm plywood	500×100mm
8	sheet shape seat	1	10mm MDF	580×370mm
9	sheet shape back	1	10mm MDF	540×220mm
10	mould cross-section	3	16mm plywood	600×230mm
11	mould(positiv)	1	1mm sheetmetal	635×390mm
12	mould(positiv)	2	16mm plywood	390×50mm
13	mould(positiv)	1	16mm plywood	390×92mm
14	mould(negative)	1	1mm sheetmetal	640×390mm
15	mould(negative)	1	16mm plywood	390×186mm
16	mould(negative)	1	16mm plywood	390×80mm

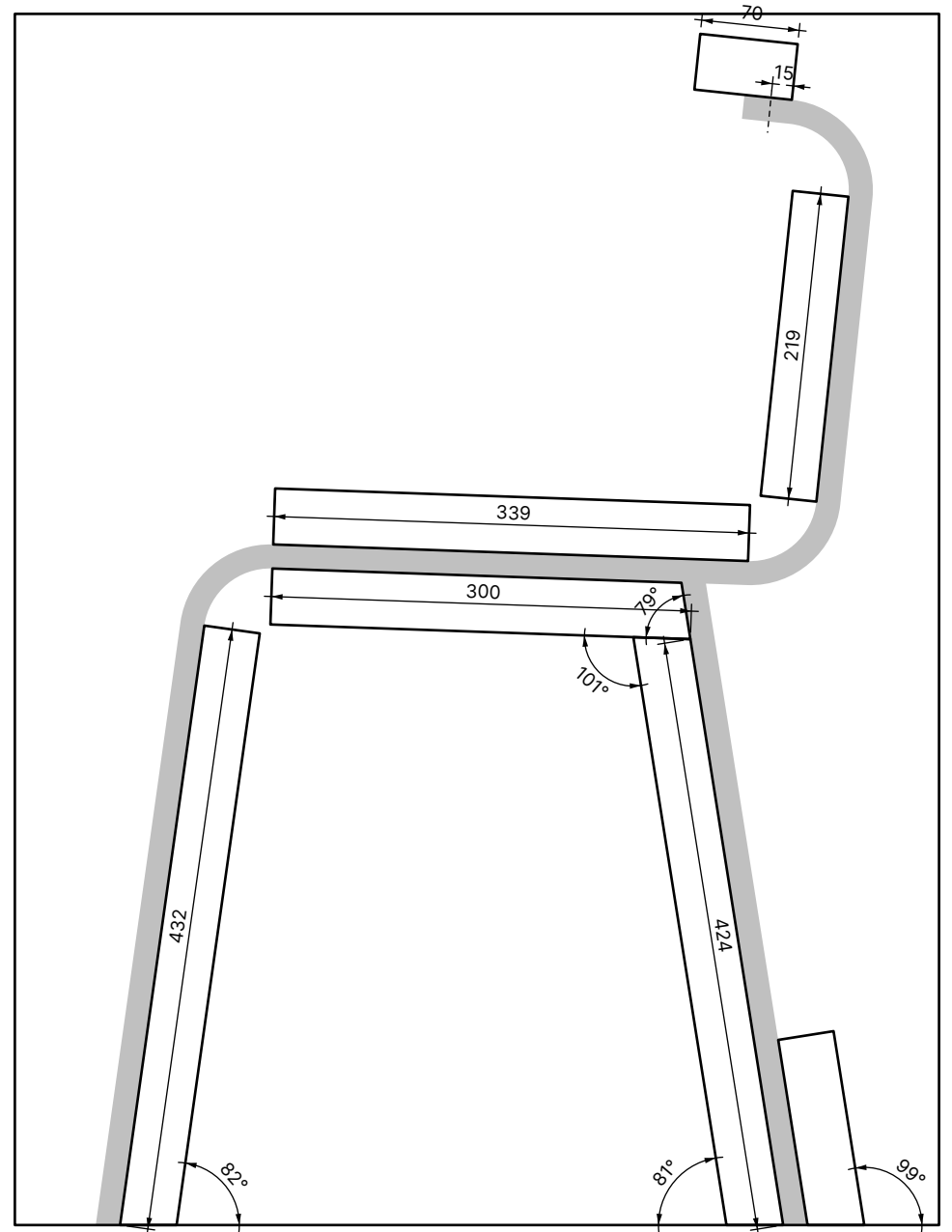
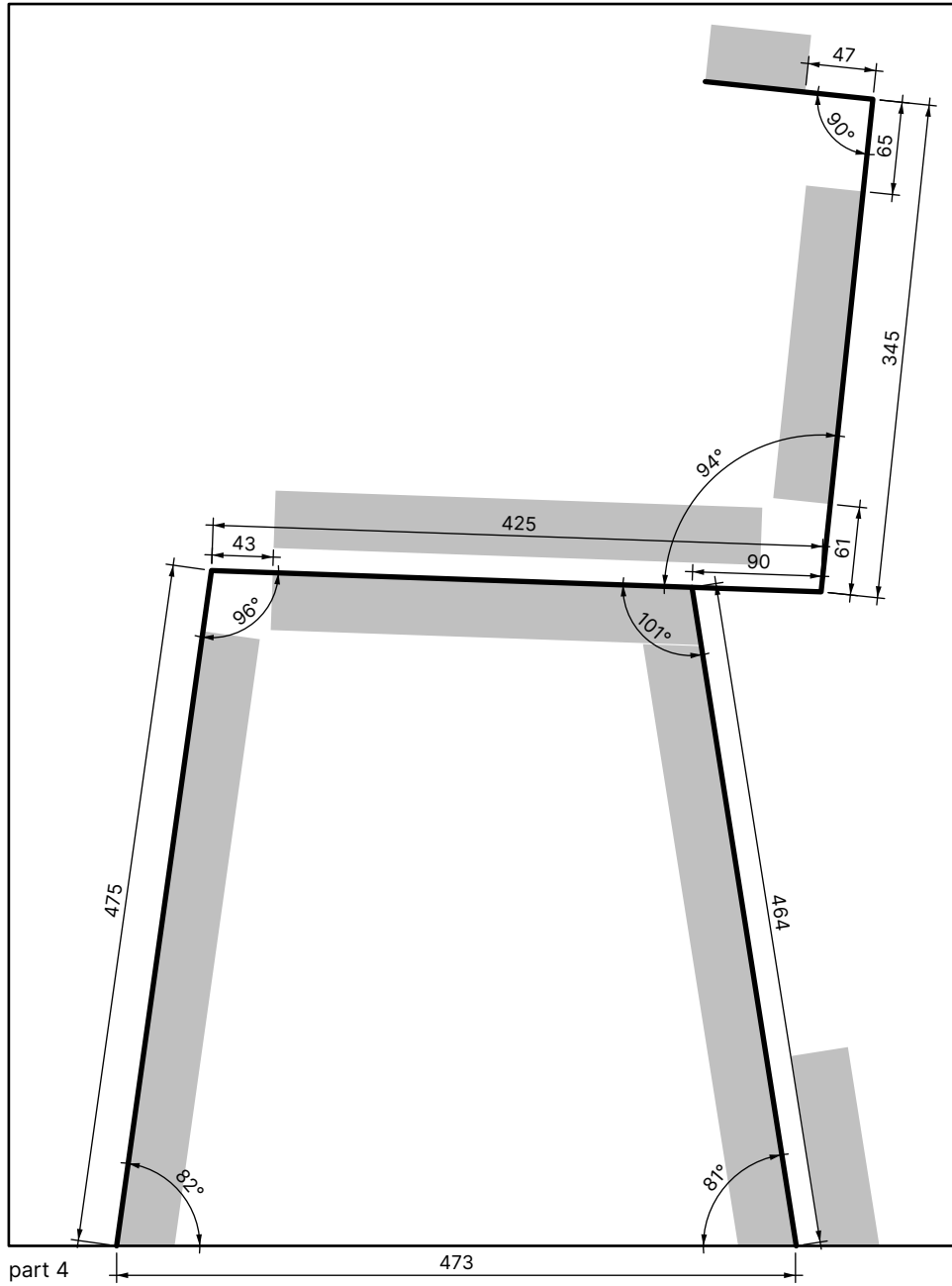
part list chair

#	assembly	qty	material	dimensions
A	seat	1	14mm PS sheet	560×350mm
B	backrest	1	14mm PS sheet	525×200mm
C	leg front	2	3/8" steel tube	1300mm
D	leg back	2	3/8" steel tube	460mm
E	cross-brace front	1	20×3mm steel bar	419mm
F	cross-brace back	1	20×3mm steel bar	405mm
G	cross-brace frame	1	10mm round steel	420mm
H	connector plug	2	12mm round steel	24mm
J	locking pin	2	nail	Ø5mm L80mm
K	euro screw	6	steel	6.3×10
L	countersunk screw	2	steel	M5×12

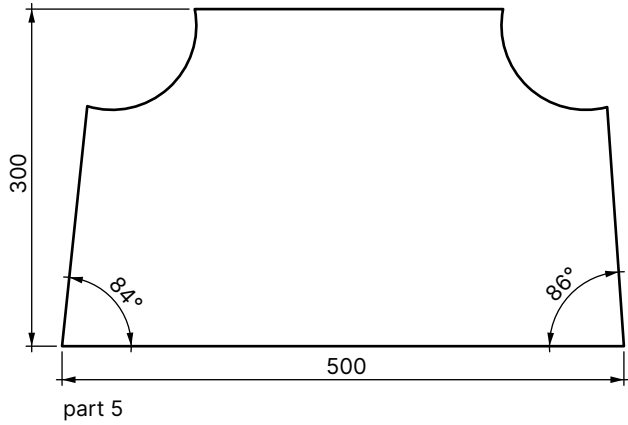
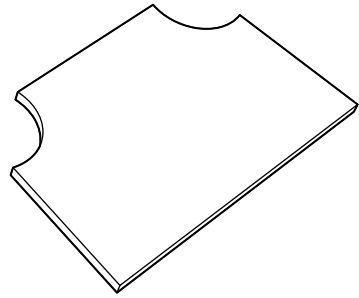
leg alignment



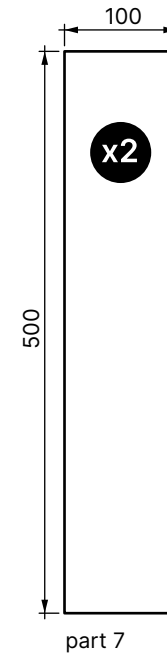
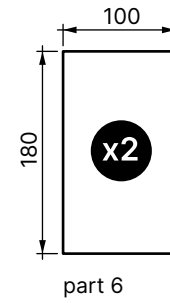
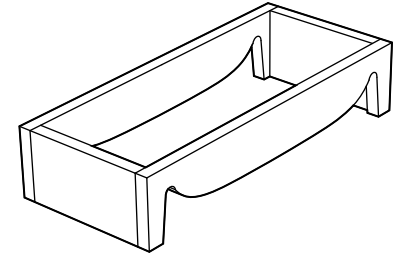
leg bending



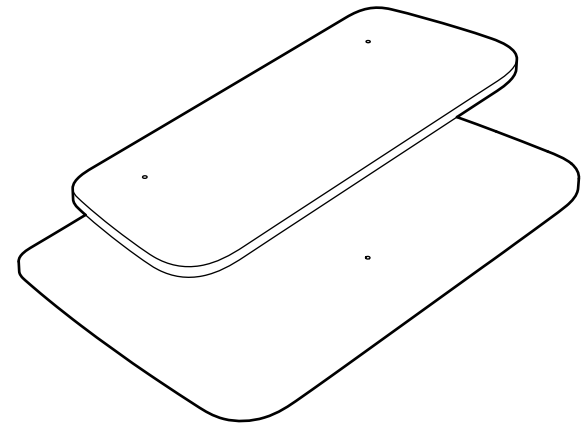
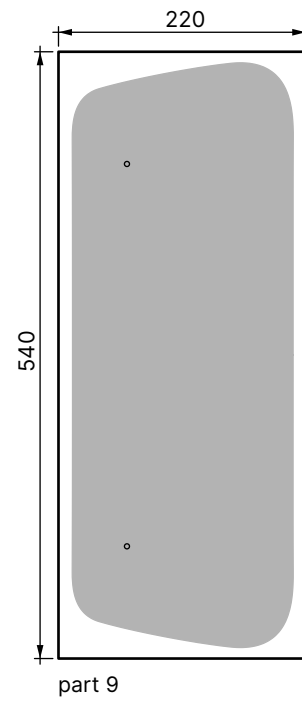
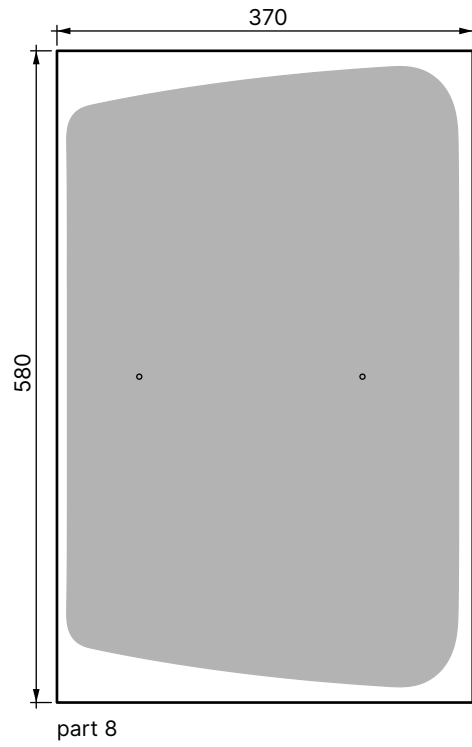
leg bending angle



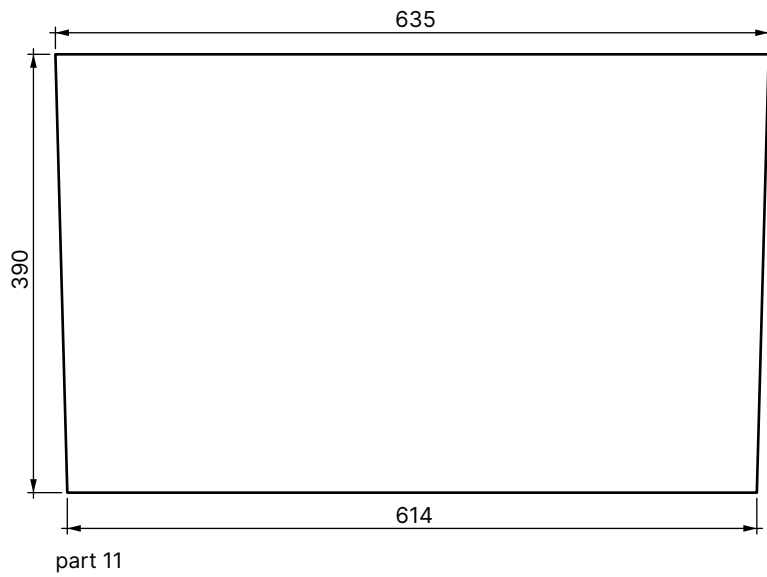
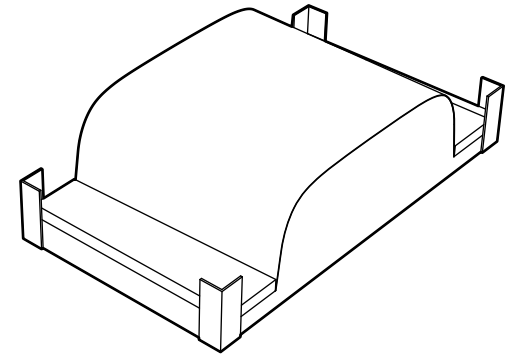
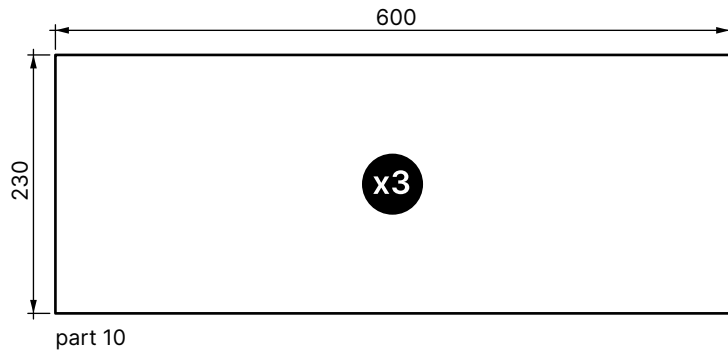
cross brace



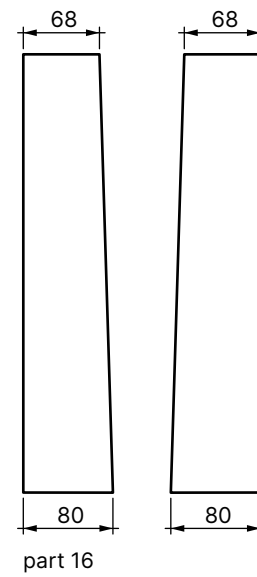
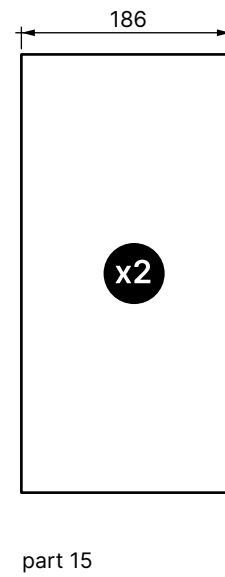
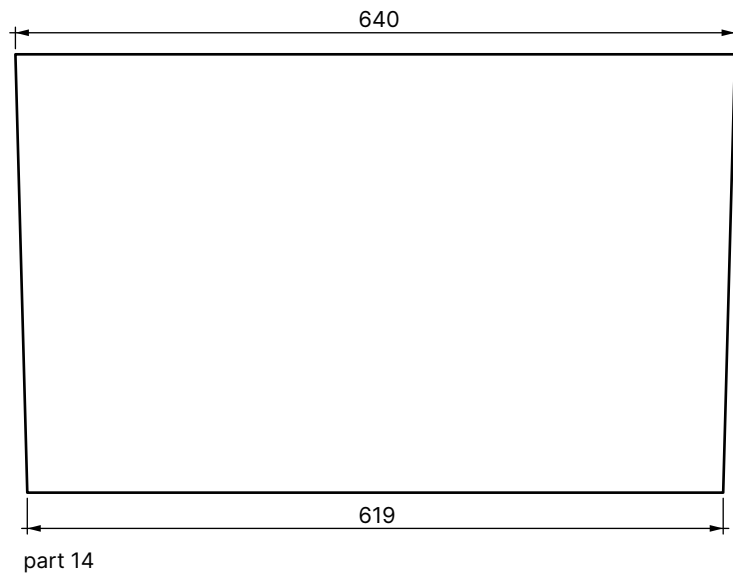
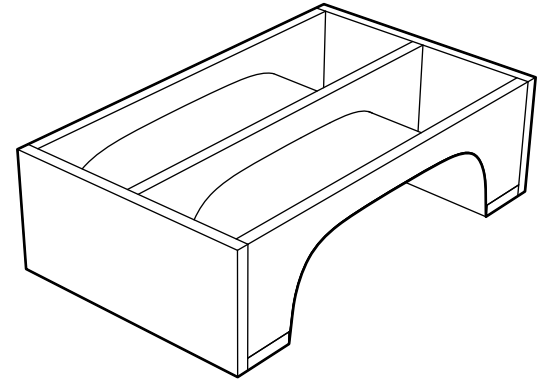
sheet shape



mould (positive)

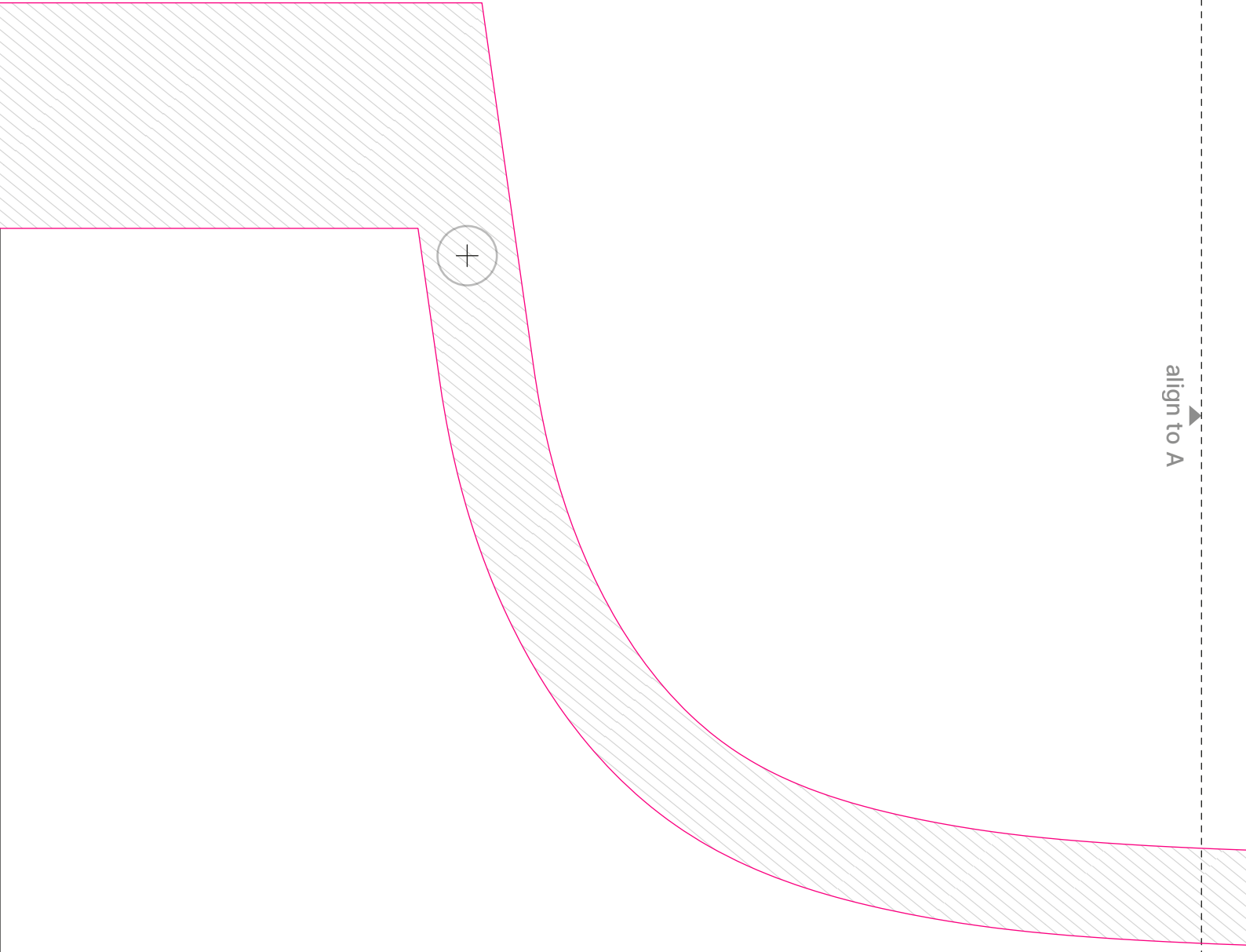


mould (negative)





align to edge



align to A



part 8—3 / B



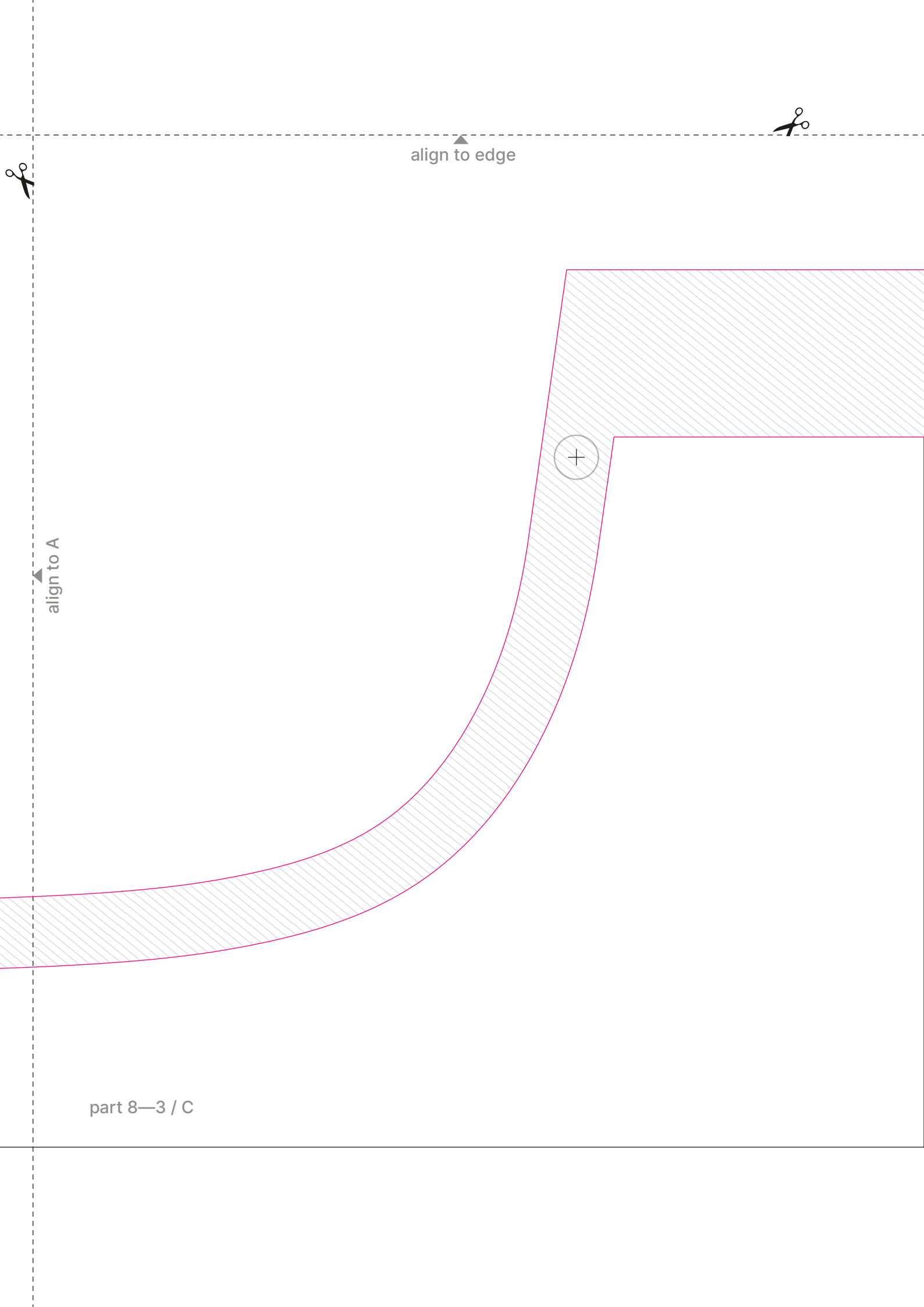
align to edge

align to edge

center line

part 8—3

part 8—3 / A



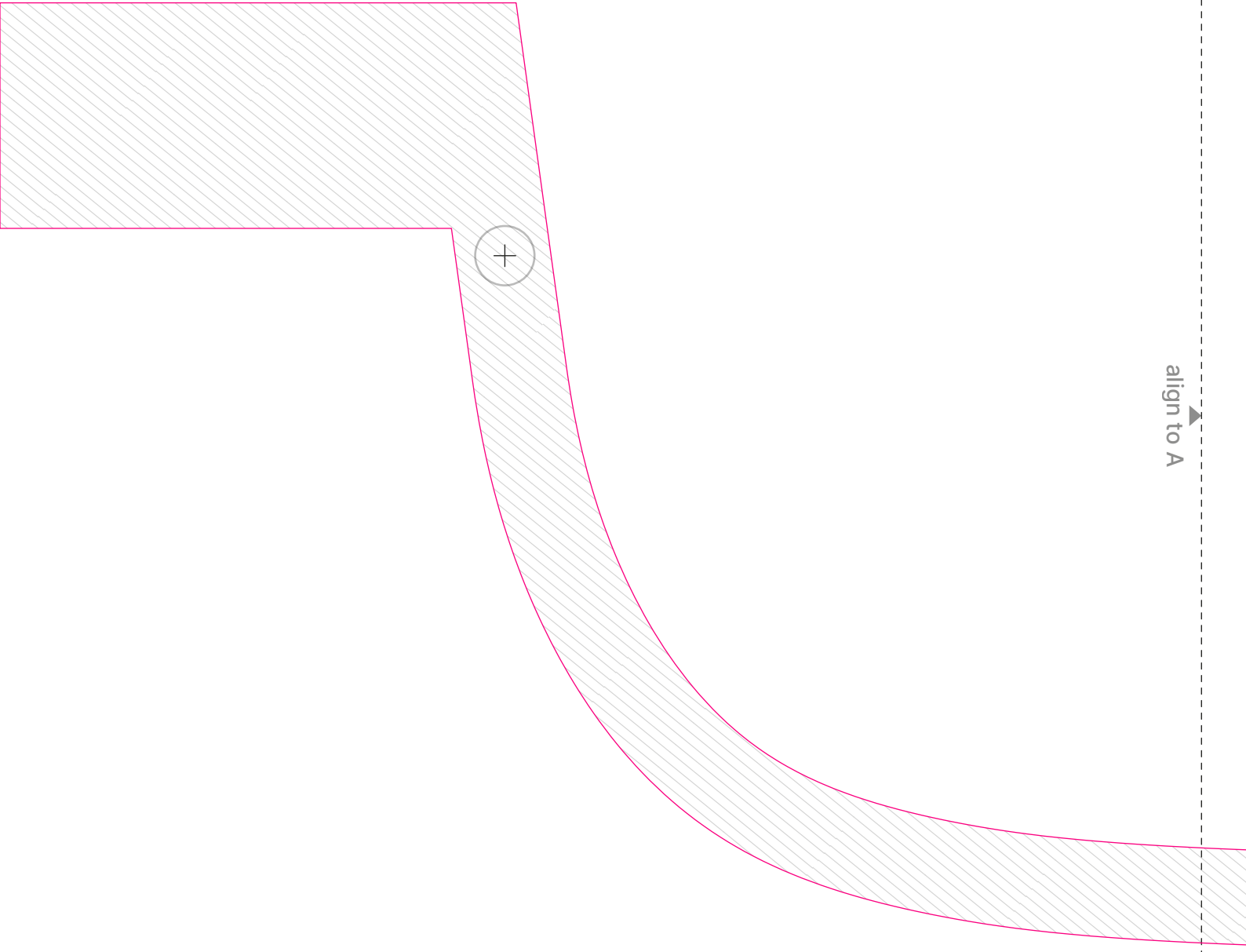
align to edge

align to A

part 8—3 / C



align to edge



align to A





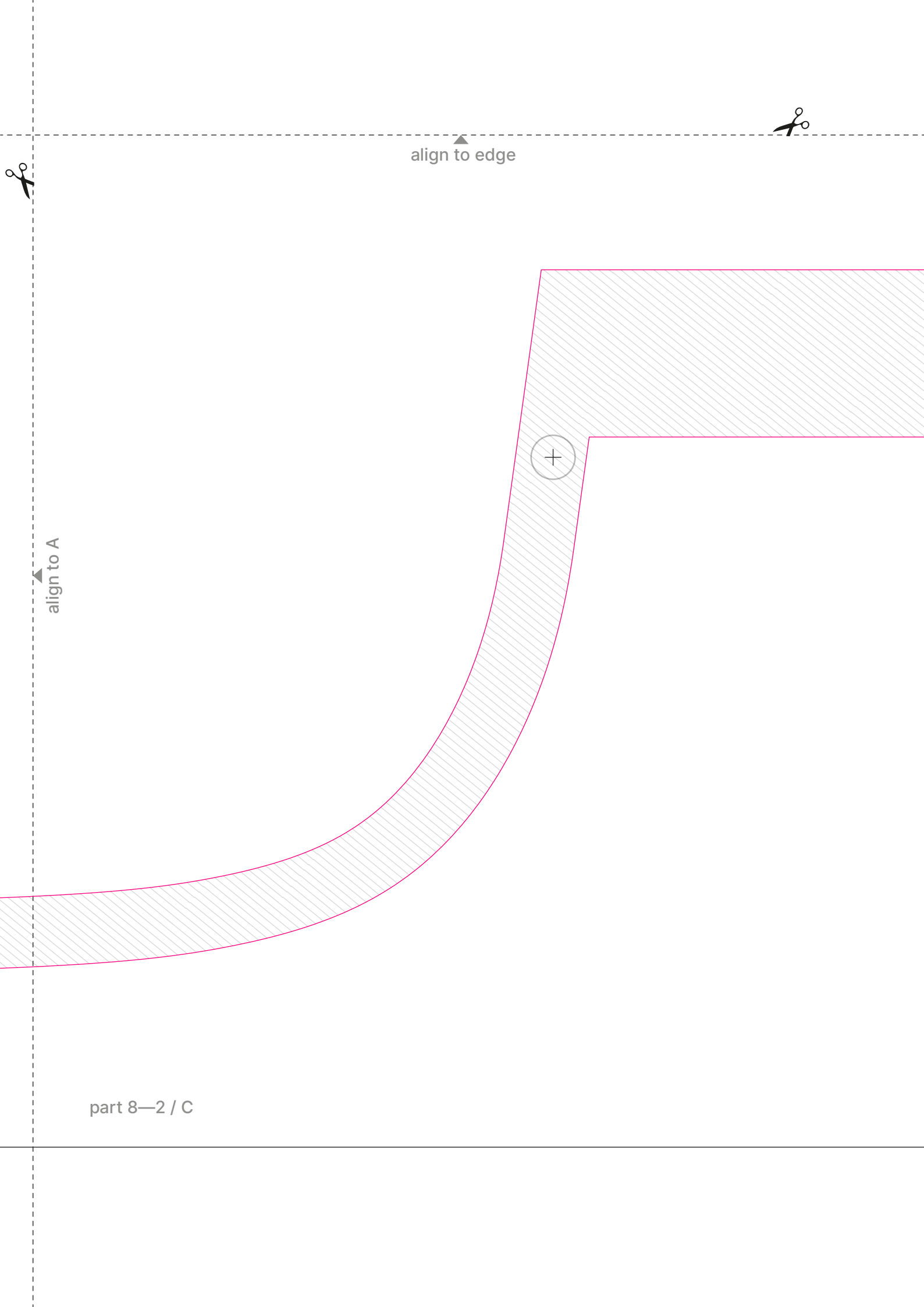
align to edge

align to edge

center line

part 8—2

part 8—2 / A



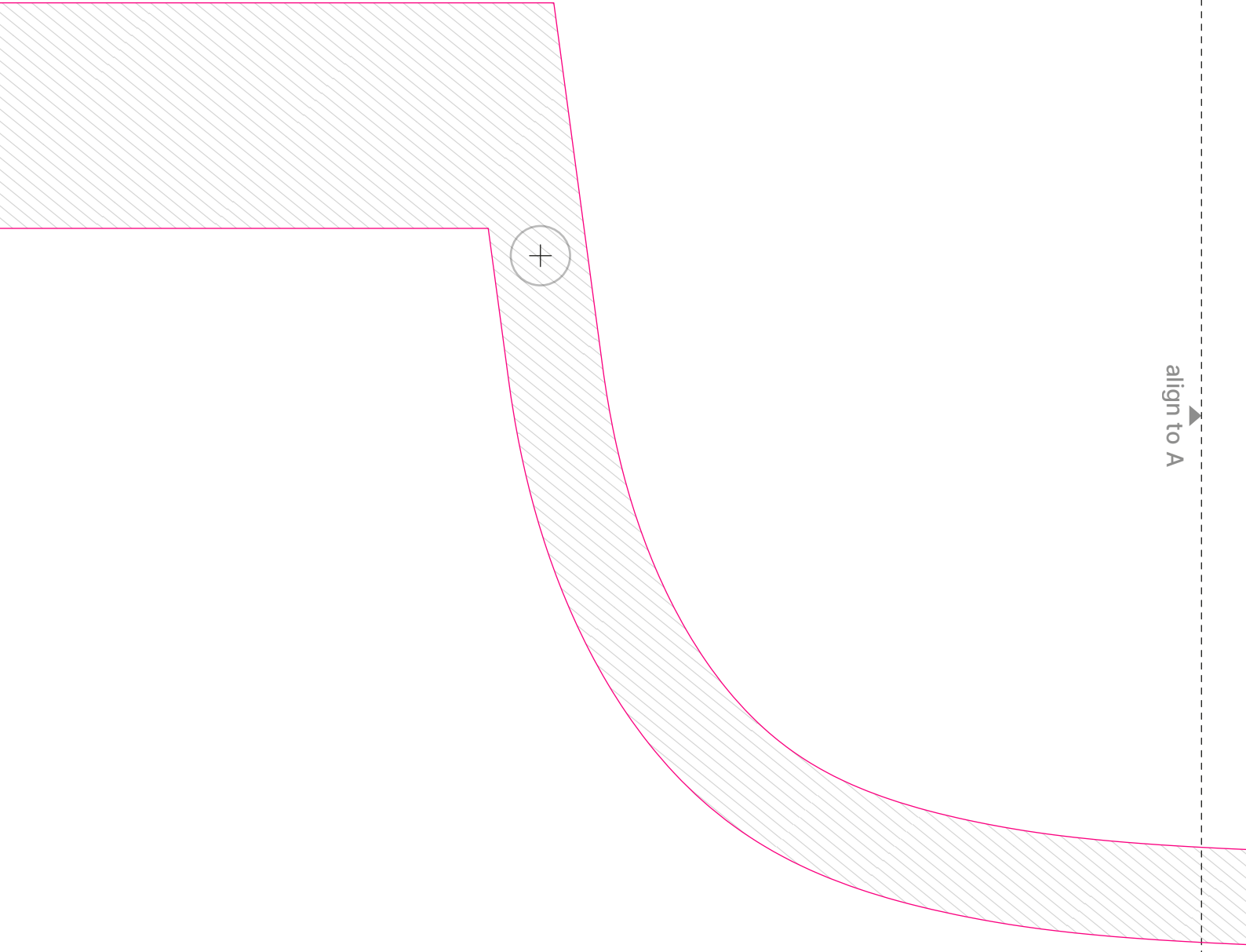
align to edge

align to A

part 8—2 / C



align to edge



align to A



part 8—1 / B



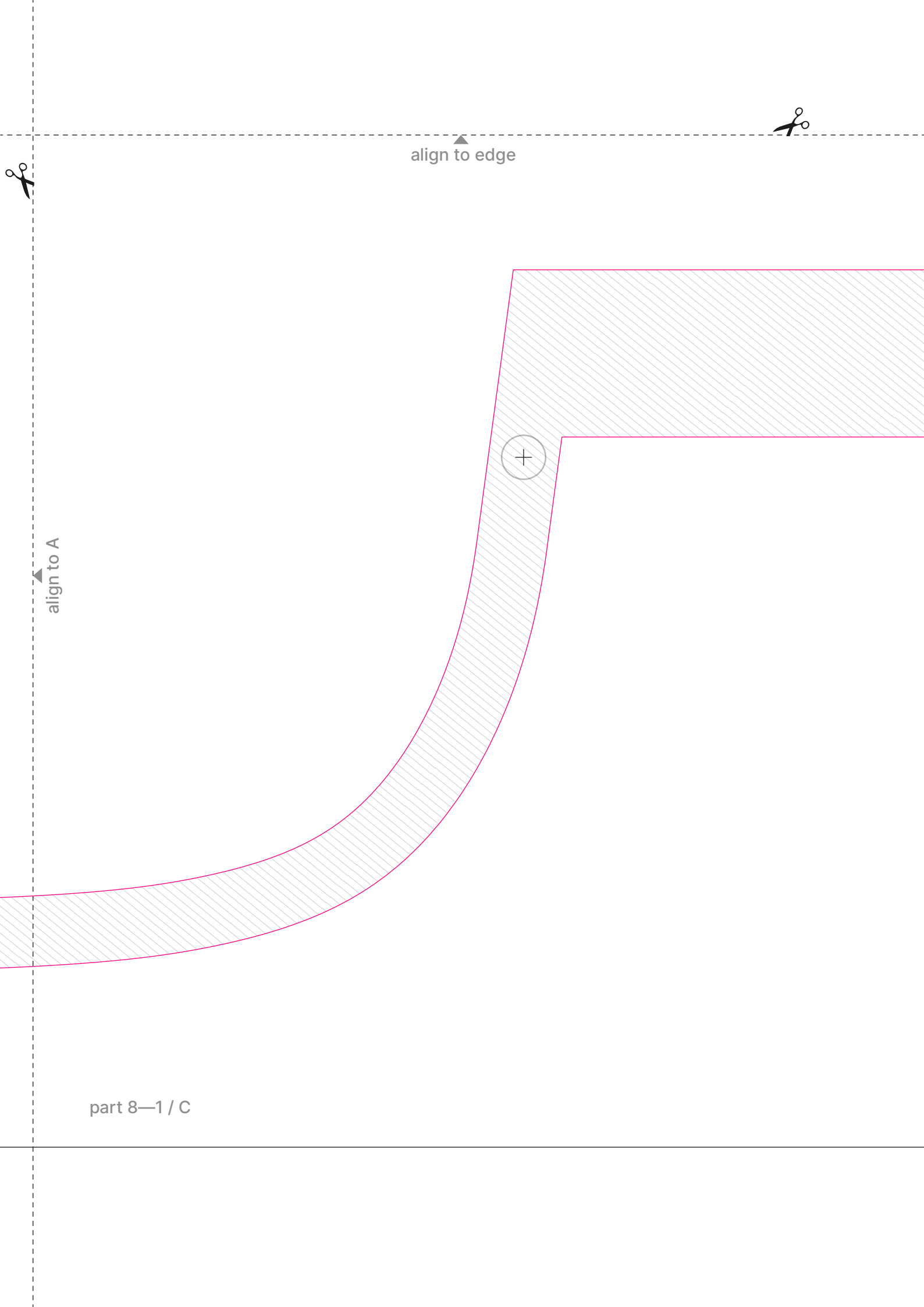
align to edge

align to edge

center line

part 8—1

part 8—1 / A



align to edge

align to A

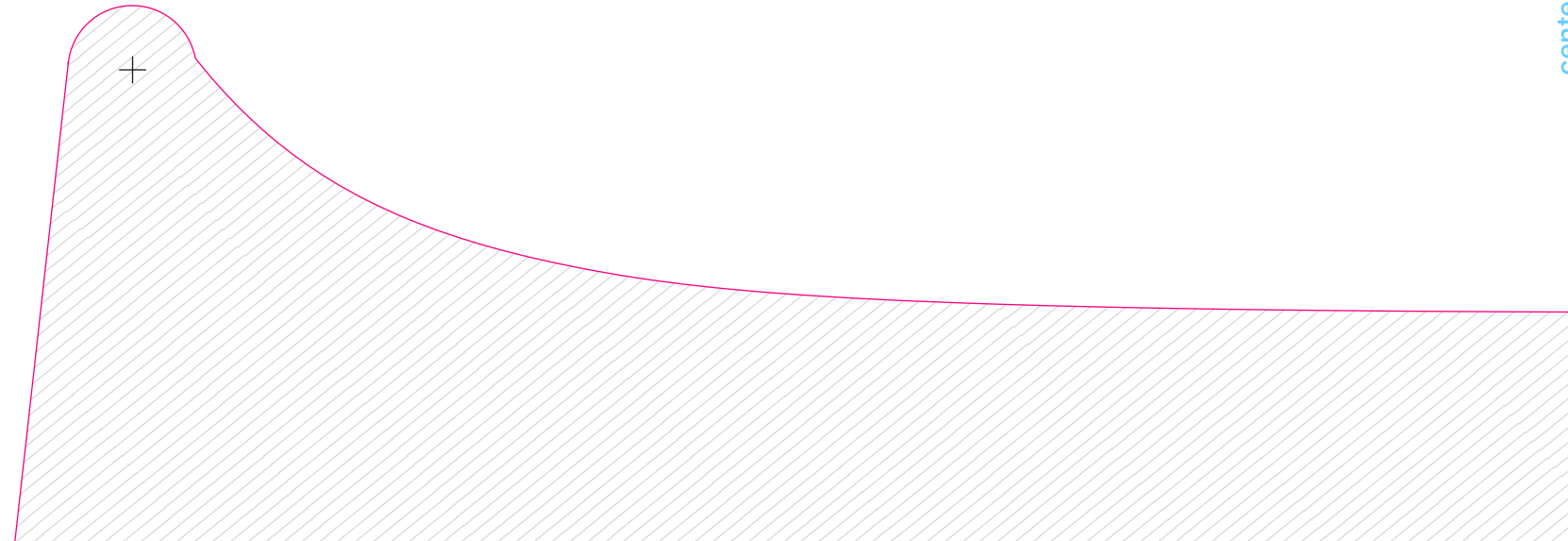
part 8—1 / C



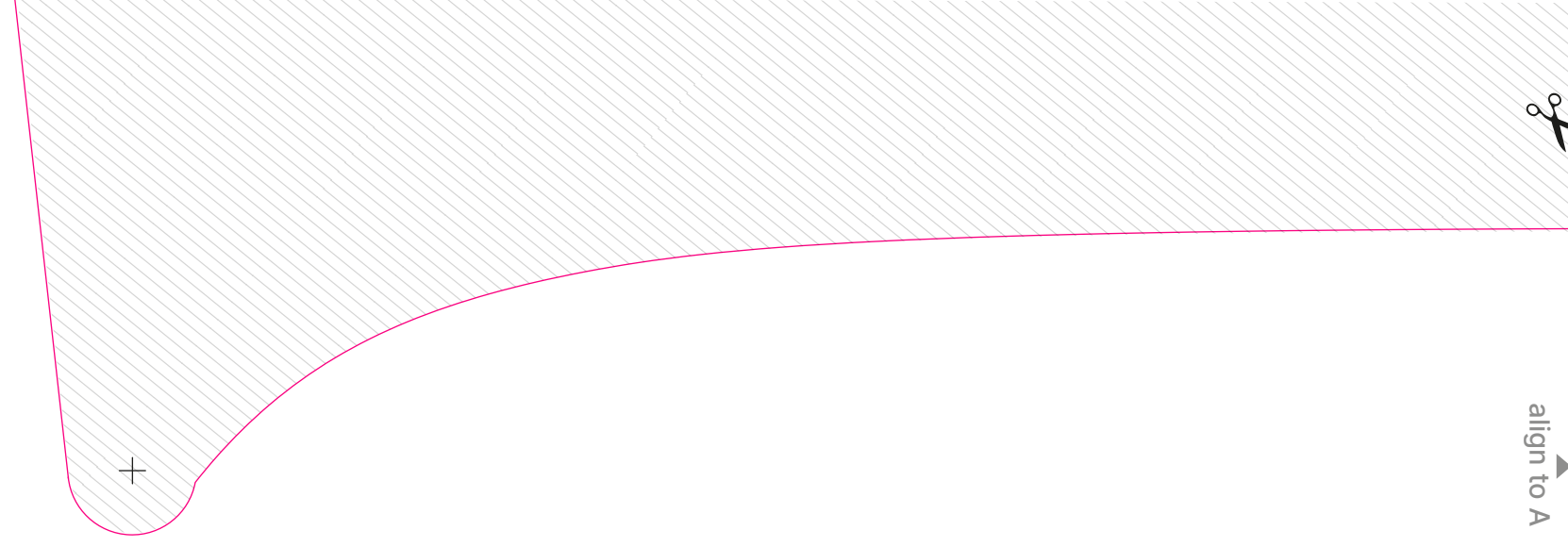
part 4—back / A



part 4—back / B



align to edge
align to edge

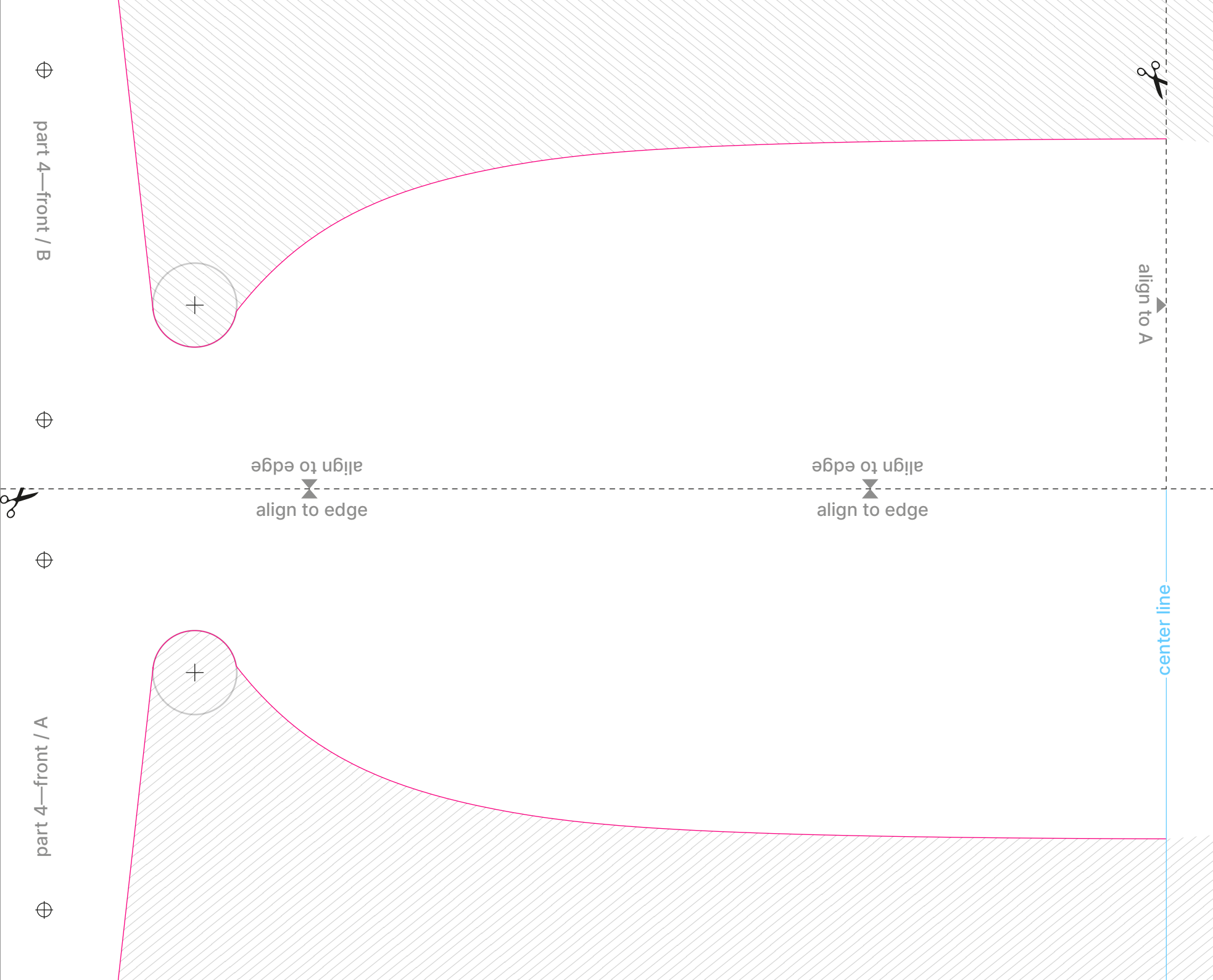


align to edge
align to edge



align to A

center line



part 6 / A

Ø4,5 mm

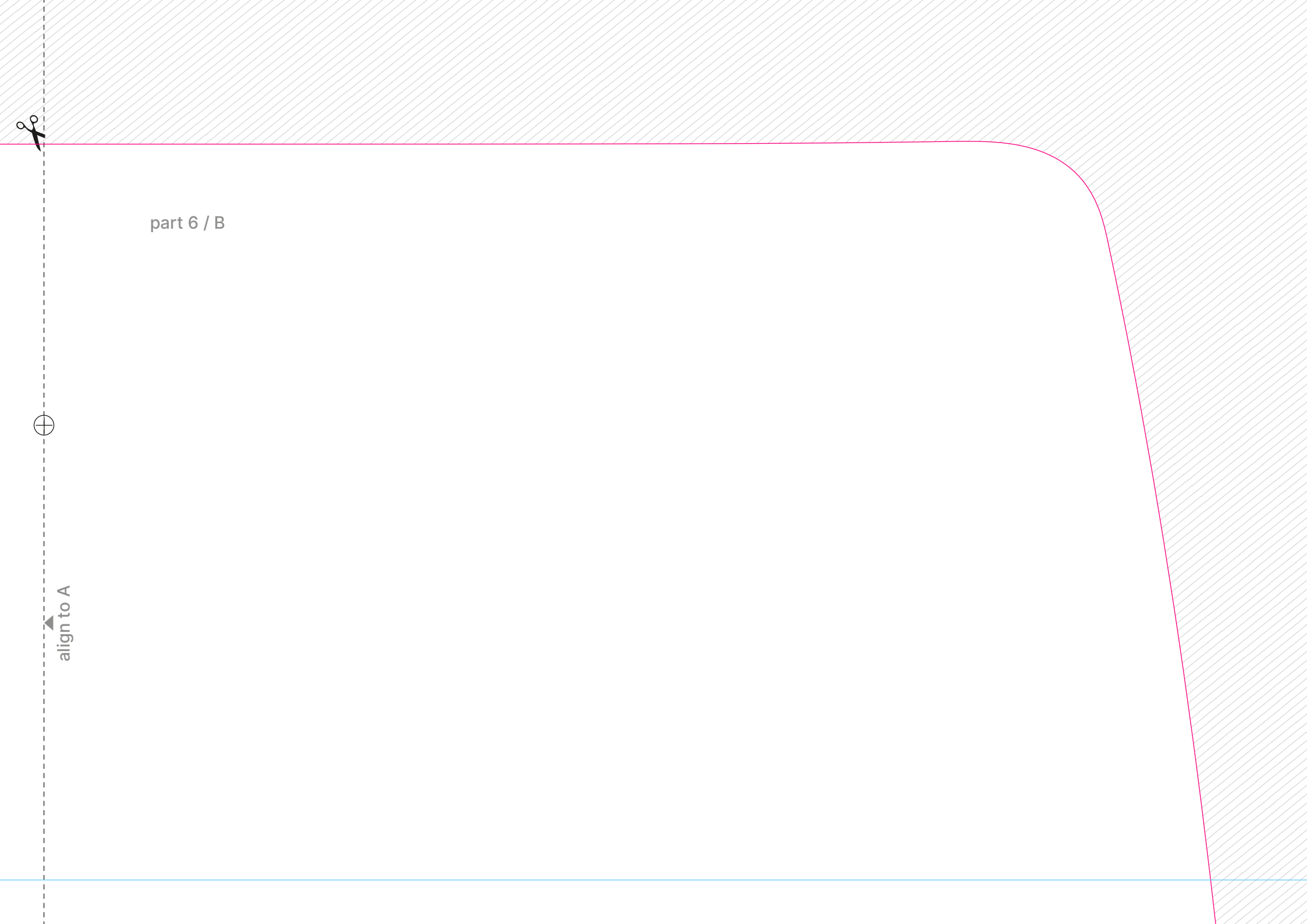




part 6 / B



align to A





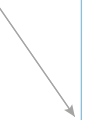
align to A

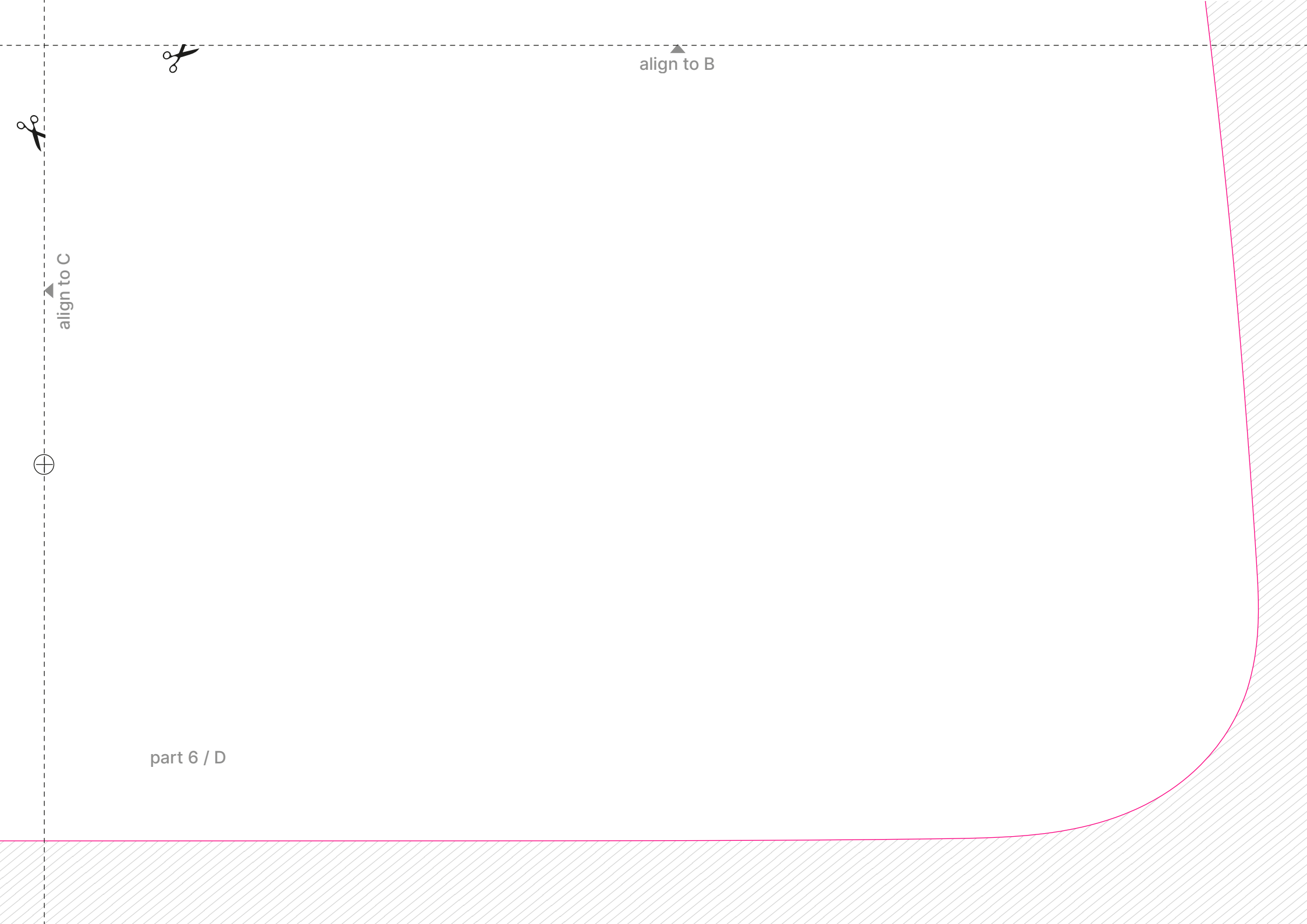
Ø4,5 mm



part 6 / C

transfer centerline to the part





align to B

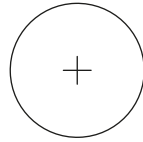


align to C



part 6 / D

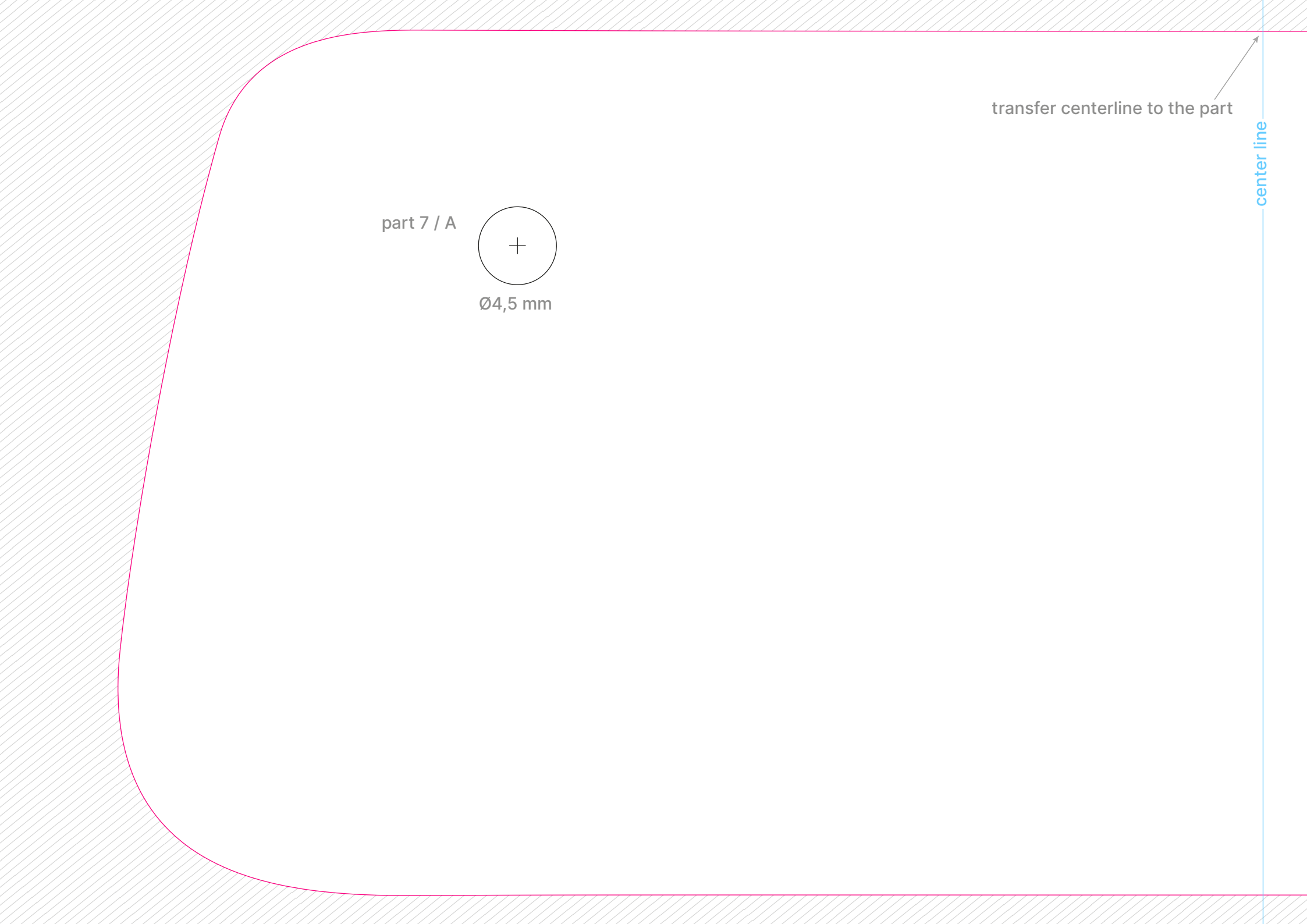
part 7 / A



Ø4,5 mm

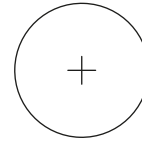
transfer centerline to the part

center line





part 7 / B



Ø4,5 mm

align to A

