

4

3

2

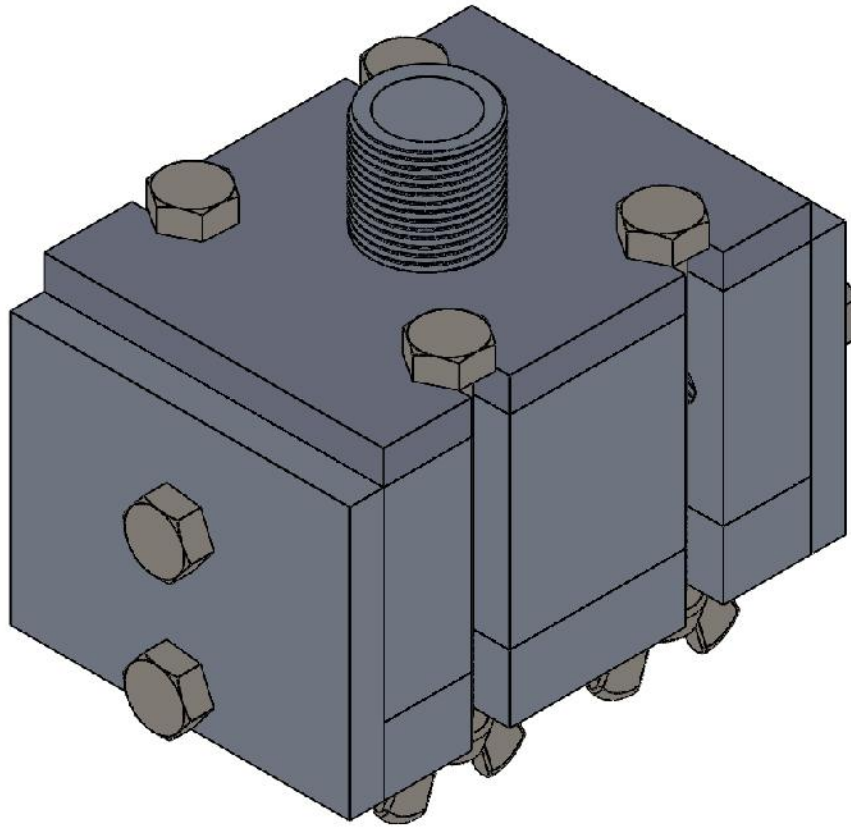
1

F

BROOM HANGER MOLD: DRAWINGS AND STEPS

F

E



E

D

D

C



C

B

B

A

A

El Tornillo
 www.eltornillo.co
 Andrés Garzón
 Cel: +57 315 682 6121

MOLD BODY:
All assembled

CONTENT:
Assembled Mold View
and Product Image

PART NUMBER:
All: 1 to 14

DWG NO.
Broom hanger mold

SCALE:1:1 UNITS: MM SHEET 1 OF 14

Format:
Letter

MM/DD/YY
9/30/2019

4

3

2

1

4

3

2

1

MOLD BODIES:

F

F

Closing bolts

E

E

Body A

D

D

Body B

C

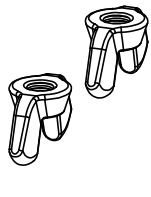
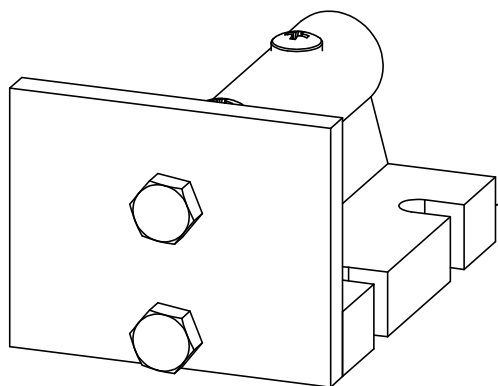
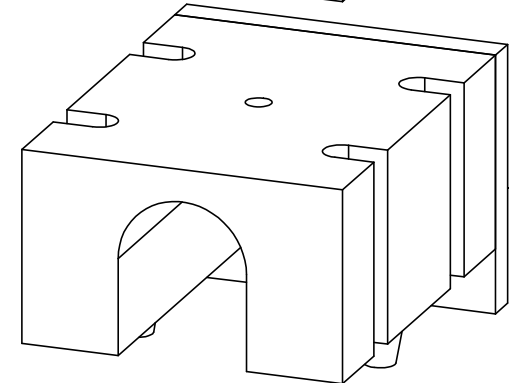
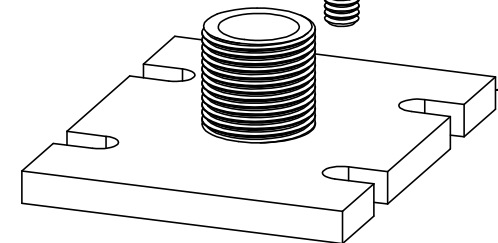
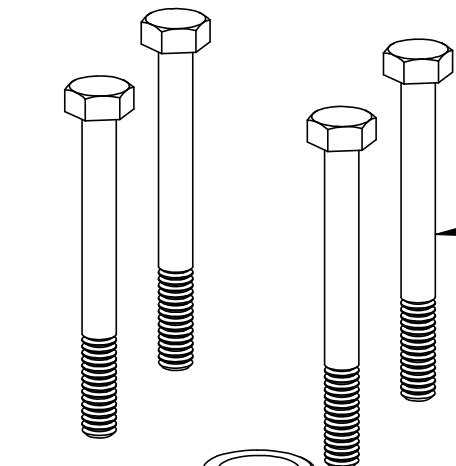
C

Body C

B

B

Closing nuts



El Tornillo 
 www.eltornillo.co
 Andrés Garzón
 Cel: +57 315 682 6121

MOLD BODY:
 All: A+B+C

CONTENT:
 Bodies identification

PART NUMBER:
 All: 1 to 14

DWG NO.
 Broom hanger mold

SCALE:1:1

Format:
 Letter

MM/DD/YY
 9/30/2019

4

3

2

1

A

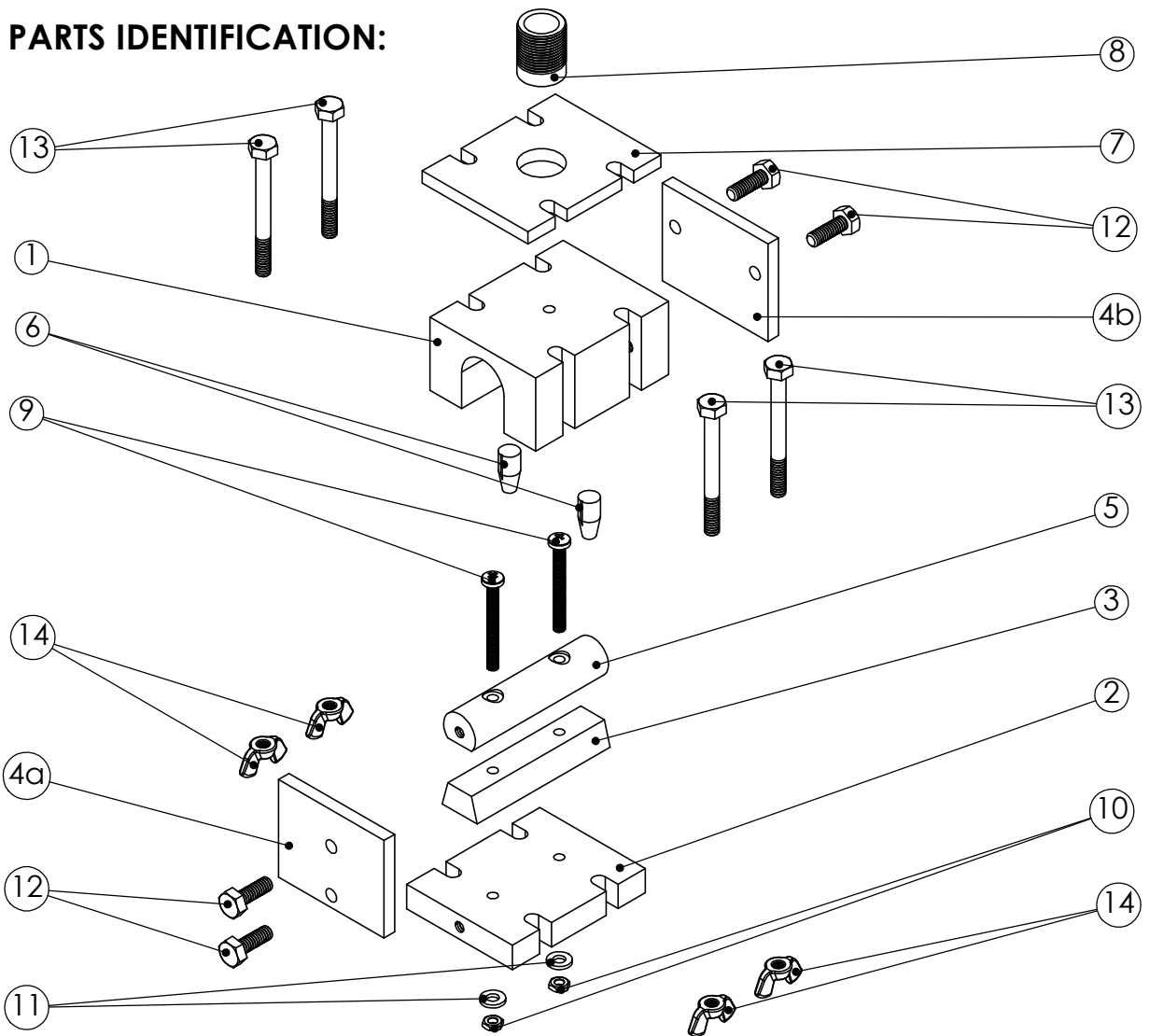
A

4

3

2

1

MOLD PARTS IDENTIFICATION:


Part #	Qty.	Length	Material	Mold body
1	1	80mm x 65mm	1 1/2" Aluminum plate	B
2	1	80mm	2 1/2" x 1/2" Aluminum flat bar	C
3	1	80mm	1" x 1/2" Aluminum flat bar	C
4(a&b)	2	65mm	2" x 1/4" Aluminum flat bar	B & C
5	1	80mm	3/4" diameter Aluminum rod	c
6	2	2cm	3/8" diameter Aluminum rod	B
7	1	80mm	2 1/2" x 1/4" Steel flat bar	A
8	1	1 1/2"	1/2" Steel pipe nipple	A
9	2	2"	3/16" Button head screw	C
10	2	3/16"	Screw nut	C
11	2	3/16"	Flat Washer	C
12	4	3/4"	1/4" Bolts	B & C
13	4	2 1/2"	1/4" Bolts	Closing
14	4	1/4"	Butterfly nuts	Closing

MOLD BODY:

All: A+B+C

PART NUMBER:

1+2+3+4+5+6+7+8+9+10+11+12+13

CONTENT:

Mold Parts Identification

DWG NO.

Broom hanger mold

Format:
LetterMM/DD/YY
9/30/2019

SCALE:1:2

SHEET 3 OF 14



El Tornillo

www.eltornillo.co
Andrés Garzón
Cel: +57 315 682 6121

4

3

2

1



El Tornillo

www.eltornillo.co
Andrés Garzón
Cel: +57 315 682 6121

All: A+B+C

Mold Parts Identification

PART NUMBER:

1+2+3+4+5+6+7+8+9+10+11+12+13

DWG NO.

Broom hanger mold

Format:
LetterMM/DD/YY
9/30/2019

SCALE:1:2

SHEET 3 OF 14

4

3

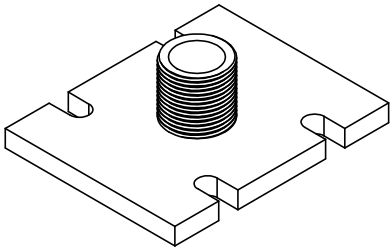
2

1

F

F

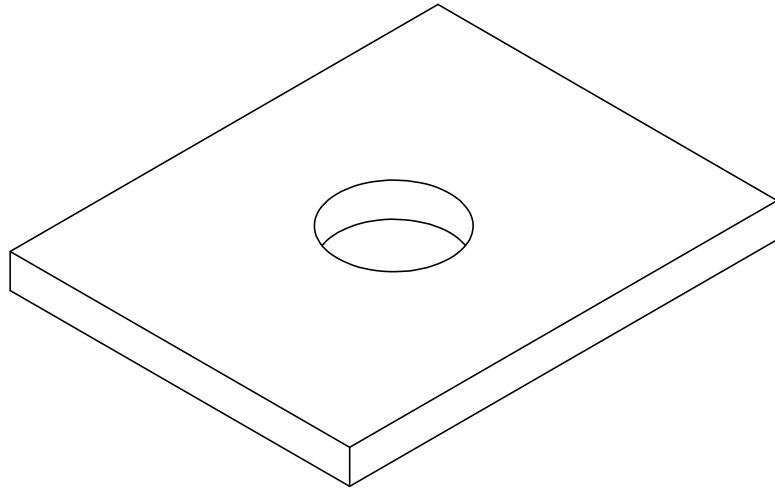
MOLD BODY: A



E

E

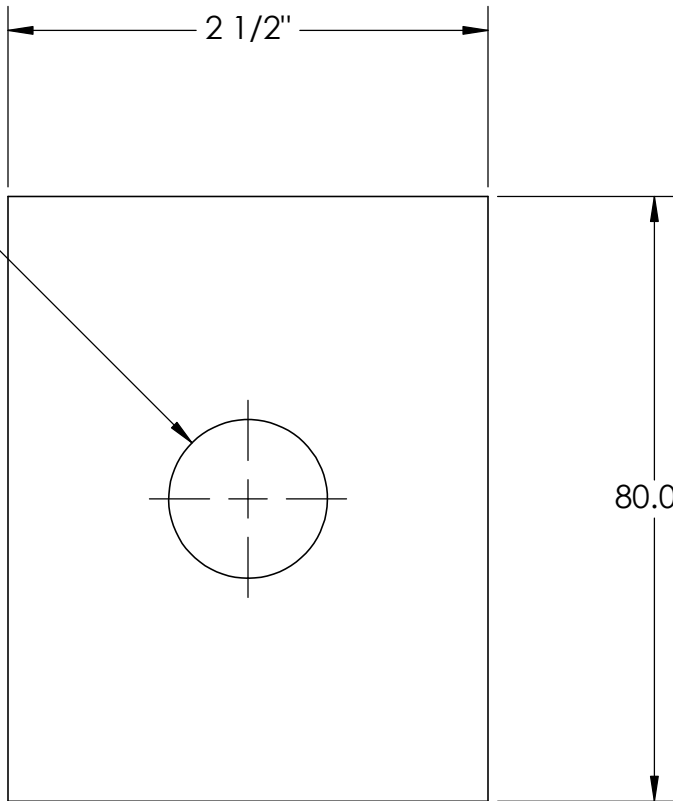
MOLD PART: #7



D

D

$\phi 21.00$
 Fit Part #8
 (Steel pipe diameter)



C

C

B

B

A

A


El Tornillo
 www.eltornillo.co
 Andrés Garzón
 Cel: +57 315 682 6121

MOLD BODY:	A: Nozzle Flange
CONTENT:	Nozzle flange center hole

PART NUMBER:	7
DWG NO.	Broom hanger mold
SCALE:1:1	UNITS: MM
SHEET 4 OF 14	

Format:	Letter
MM/DD/YY	9/30/2019

4

3

2

1

4

3

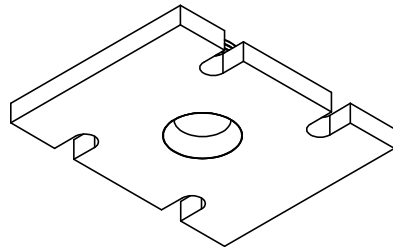
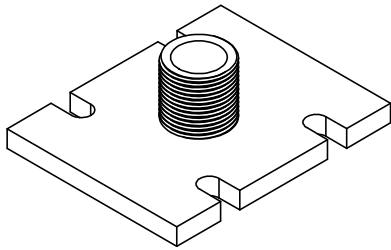
2

1

F

F

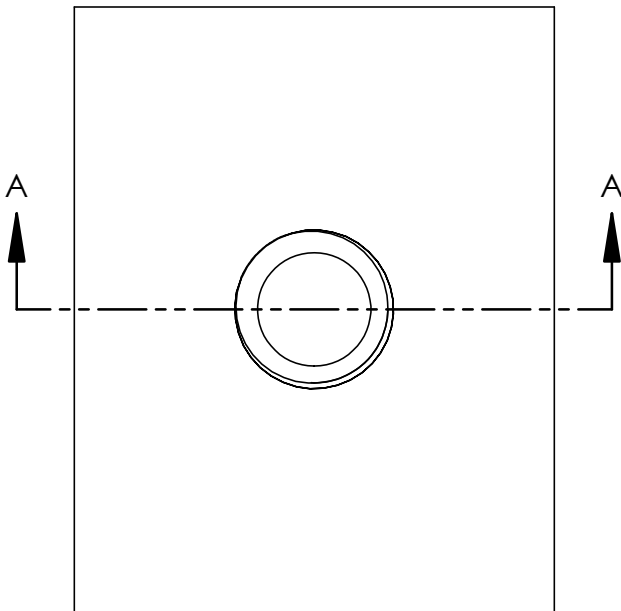
MOLD BODY: A



E

E

MOLD PARTS: #7 & #8



D

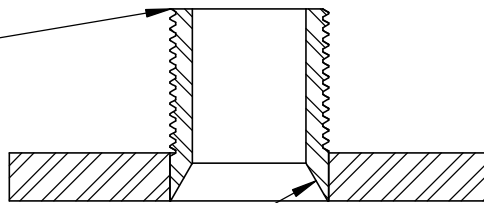
D

C

C

SECTION A-A

Half cutted
1/2" steel pipe nipple



Weld Parts #7 & #8 and
turn in the lathe to chamfer

B

B

A

A


El Tornillo
 www.eltornillo.co
 Andrés Garzón
 Cel: +57 315 682 6121

MOLD BODY:
A: Nozzle Flange

CONTENT:
Nozzle Flange Welding

PART NUMBER:
7 & 8

DWG NO.
Broom hanger mold

SCALE:1:1

UNITS: MM

SHEET 5 OF 14

Format:
Letter
MM/DD/YY
9/30/2019

4

3

2

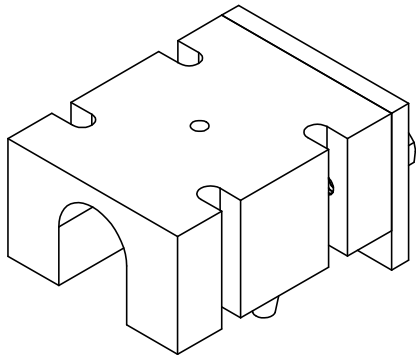
1

4

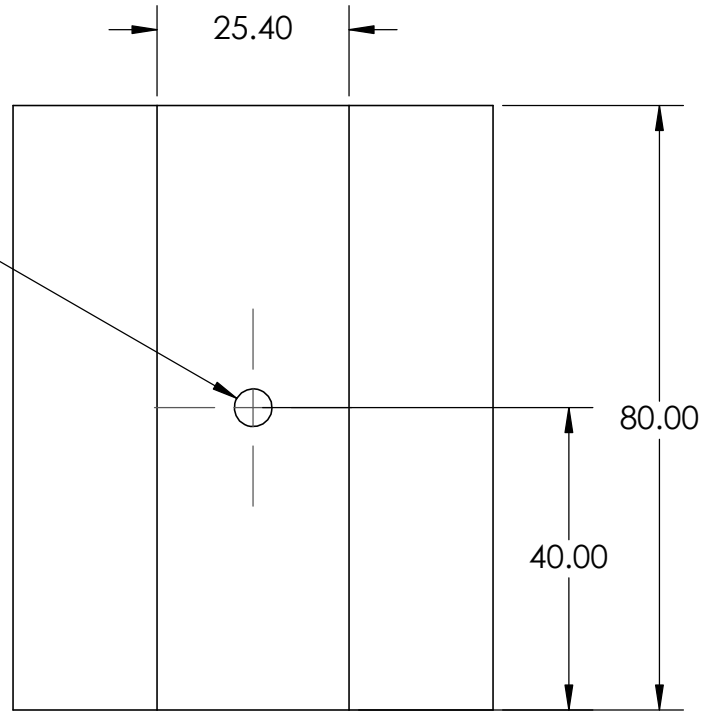
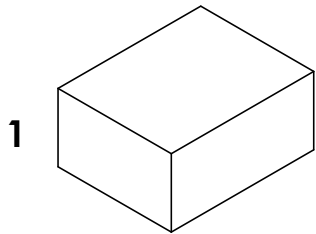
3

2

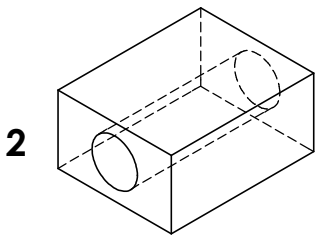
1

MOLD BODY: B

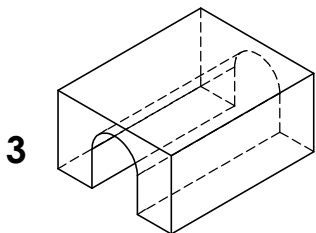
$\phi 5.00$
Through hole

**MOLD PART: #1**

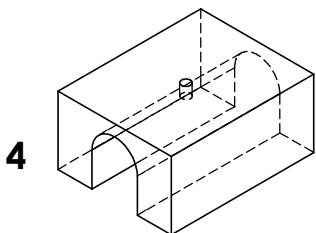
Part #1



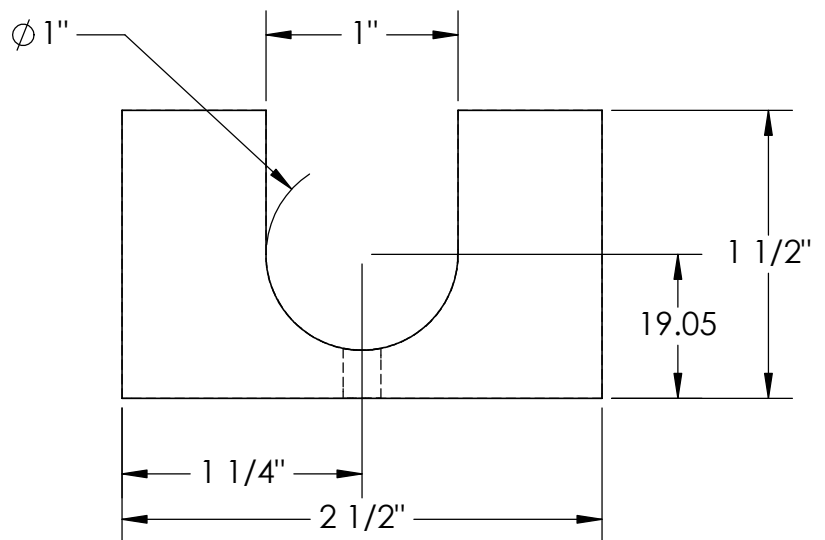
Drill a 1"
through hole



Mill a 1" wide
channell



Drill a 5mm
through hole



El Tornillo
www.eltornillo.co
Andrés Garzón
Cel: +57 315 682 6121

MOLD BODY:

B: Female body

CONTENT:

Female Body Machining

PART NUMBER:

1

DWG NO.

Broom hanger mold

Format:
LetterMM/DD/YY
9/30/2019

SCALE:1:1

UNITS: MM

SHEET 6 OF 14

4

3

2

1

El Tornillo

www.eltornillo.co

Andrés Garzón

Cel: +57 315 682 6121

MOLD BODY:

B: Female body

CONTENT:

Female Body Machining

PART NUMBER:

1

DWG NO.

Broom hanger mold

Format:
LetterMM/DD/YY
9/30/2019

SCALE:1:1

UNITS: MM

SHEET 6 OF 14

4

3

2

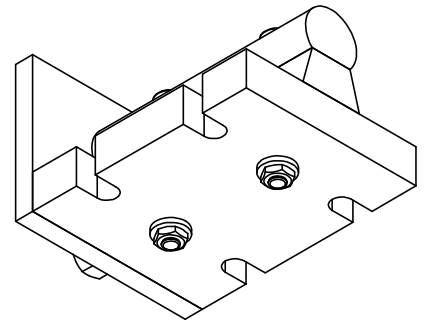
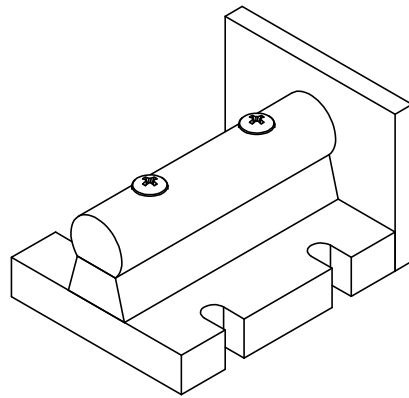
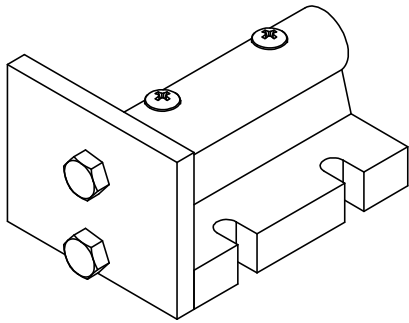
1

4

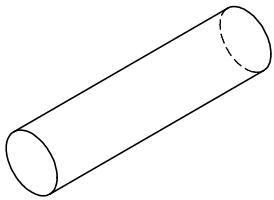
3

2

1

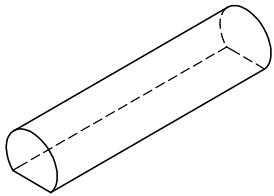
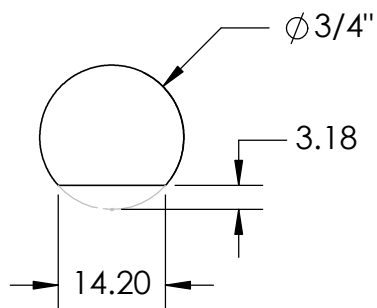
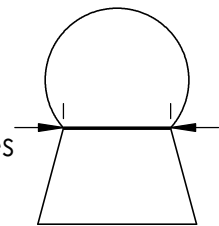
MOLD BODY: C**MOLD PART: #5**

1



Part #5

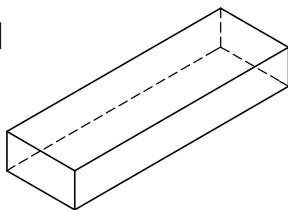
2

Mill a flat face
14.2mm wideMake this wide
the same in both faces

COINCIDENT FACES

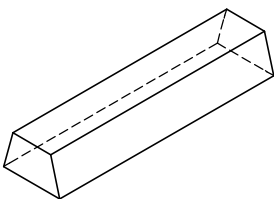
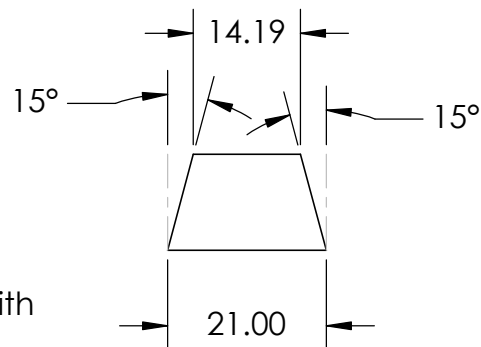
MOLD PART: #3

1



Part #3

2

Mill the side with
a 15° angle**El Tornillo**www.eltornillo.co
Andrés Garzón

Cel: +57 315 682 6121



MOLD BODY:

C: Male body

CONTENT:

Parts #3 and #5 machining

PART NUMBER:

3 & 5

DWG NO.:

Broom hanger mold

SCALE:1:1

UNITS: MM

SHEET 7 OF 14

Format:
LetterMM/DD/YY
9/30/2019

4

3

2

1

El Tornillowww.eltornillo.co
Andrés Garzón

Cel: +57 315 682 6121



MOLD BODY:

C: Male body

CONTENT:

Parts #3 and #5 machining

PART NUMBER:

3 & 5

DWG NO.:

Broom hanger mold

SCALE:1:1

UNITS: MM

SHEET 7 OF 14

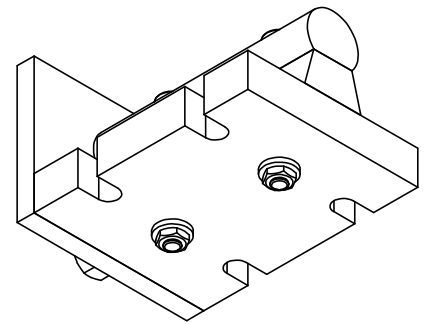
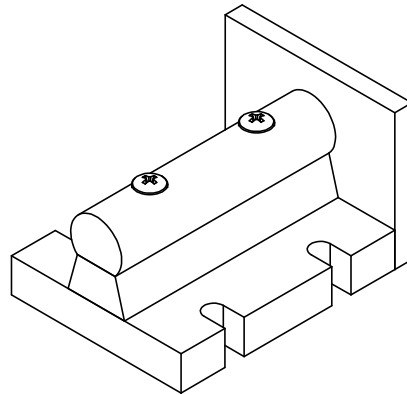
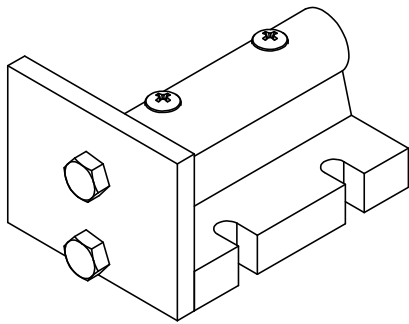
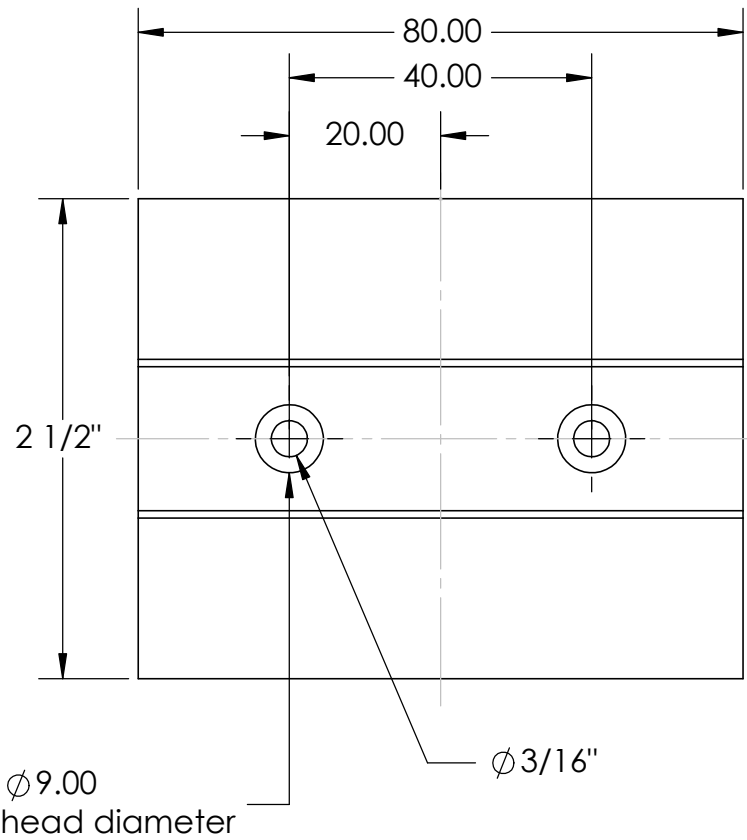
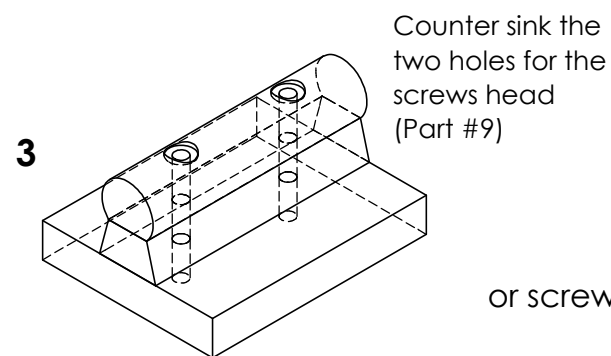
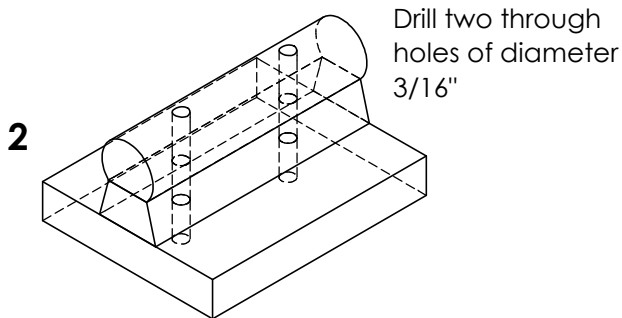
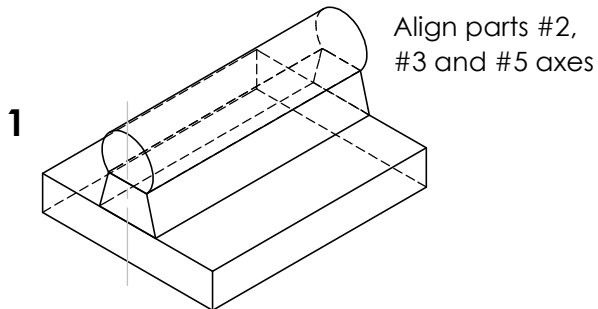
Format:
LetterMM/DD/YY
9/30/2019

4

3

2

1

MOLD BODY: C**MOLD PARTS: #2, #3 & #5**

El Tornillo
www.eltornillo.co
Andrés Garzón
Cel: +57 315 682 6121

MOLD BODY:

C: Male body

CONTENT:

Parts #2, #3 and #5
through holes

PART NUMBER:

2, 3 & 5

DWG NO.:

Broom hanger mold

Format:
LetterMM/DD/YY
9/30/2019

SCALE:1:1

UNITS: MM

SHEET 8 OF 14

4

3

2

1

A

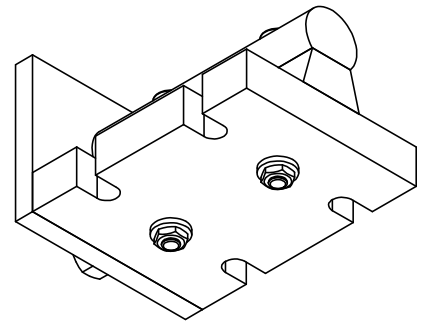
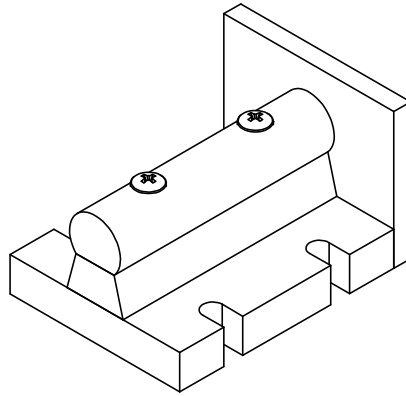
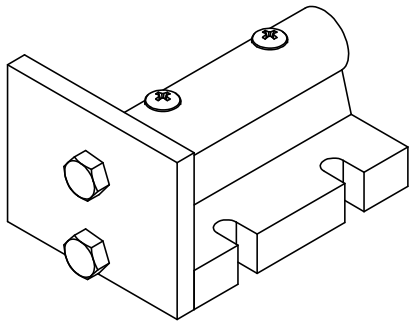
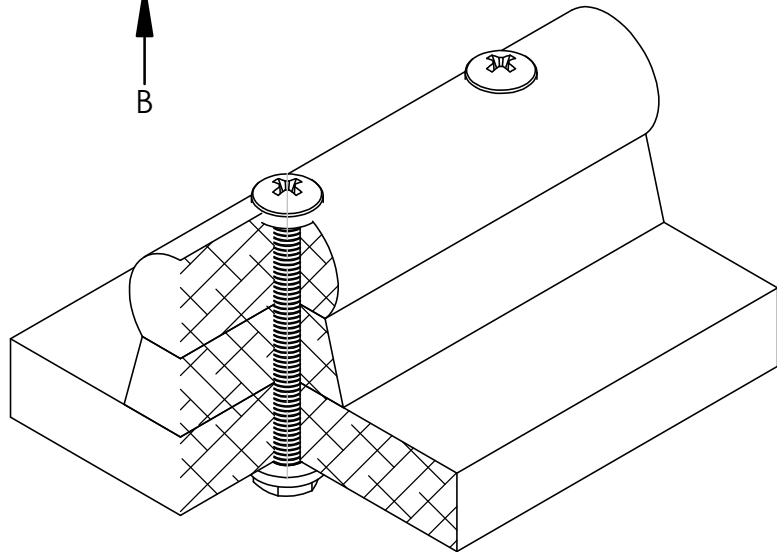
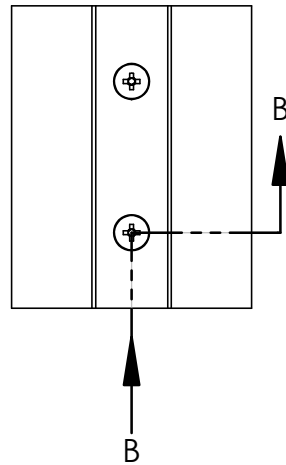
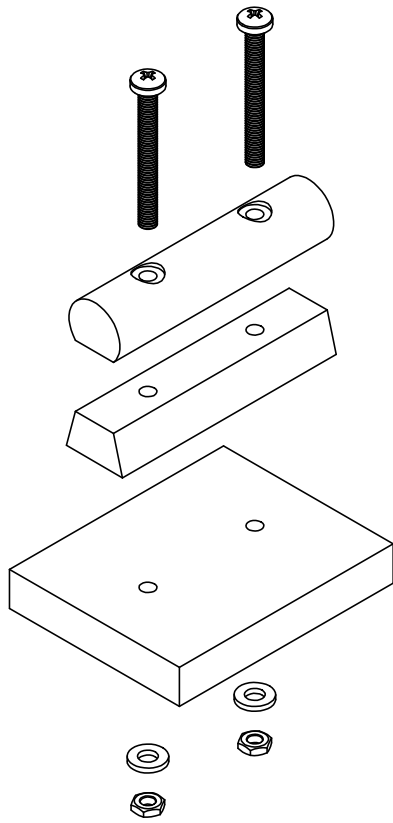
A

4

3

2

1

MOLD BODY: C**MOLD PARTS: #2, #3, #5, #9, #10 and #11**

SECTION B-B

Fix parts #2, #3 and #5
with the 3/16" screws,
washers and bolts.
(Parts #9, #10 and #11)


El Tornillo
www.eltornillo.co
Andrés Garzón
Cel: +57 315 682 6121

MOLD BODY:

C: Male body

CONTENT:

Fixing of parts #2, #3 and #5

PART NUMBER:

2, 3, 5, 9, 10 & 11

DWG NO.:

Broom hanger mold

SCALE:1:1

UNITS: MM

SHEET 9 OF 14

Format:
LetterMM/DD/YY
9/30/2019

4

3

2

1

A

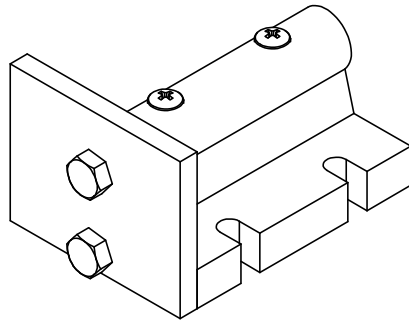
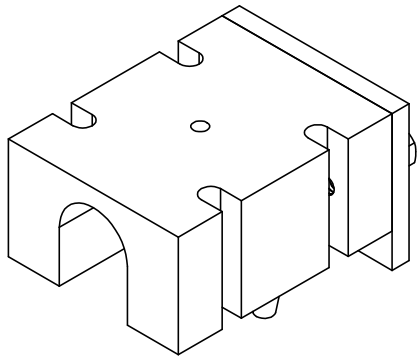
A

4

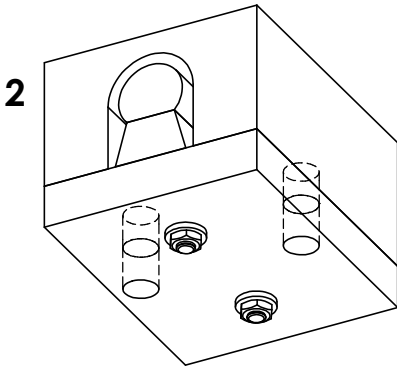
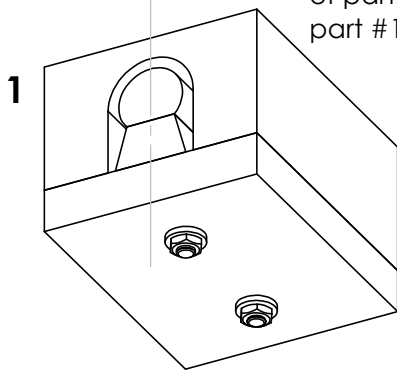
3

2

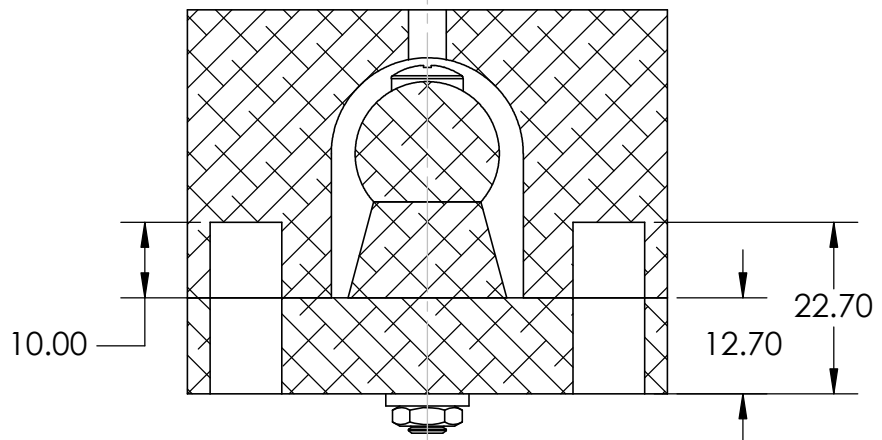
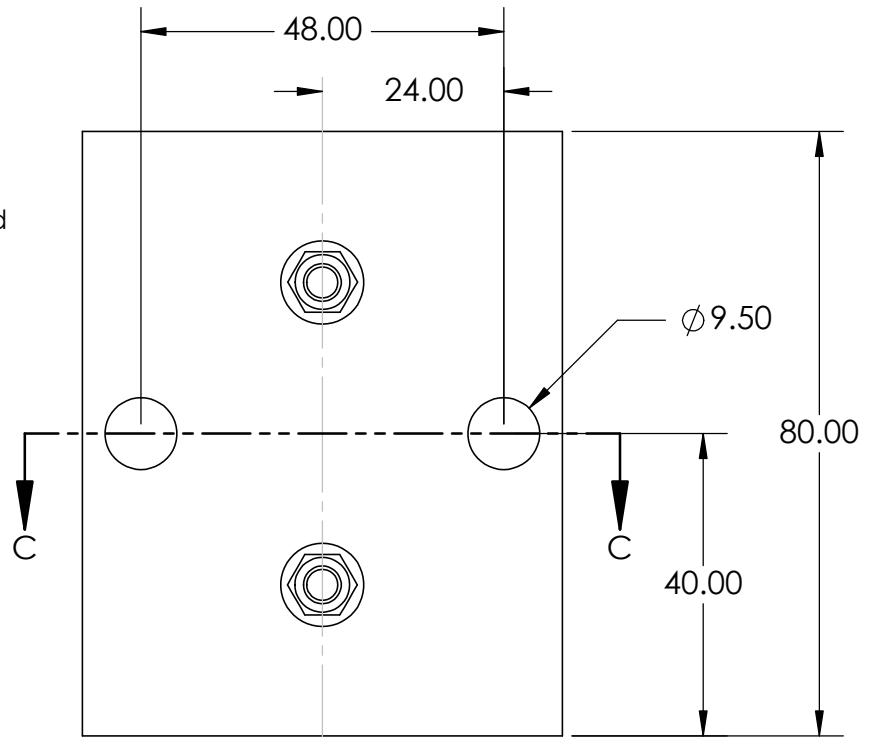
1

MOLD BODIES: B+C

MOLD PARTS: #1+ #2,3,5

Align the axes
of parts #2, 3 and
part #1



Drill two $\phi 9.50$ mm holes


SECTION C-C

El Tornillo
www.eltornillo.co
Andrés Garzón
Cel: +57 315 682 6121

MOLD BODY:
B+C: Male and
Female bodies
CONTENT:
Alignment holes for
bodies B and C

PART NUMBER:
1, 2, 3 & 5

DWG NO.
Broom hanger mold

SCALE:1:1

UNITS: MM

SHEET 10 OF 14

Format:
Letter
MM/DD/YY
9/30/2019

4

3

2

1

A

A

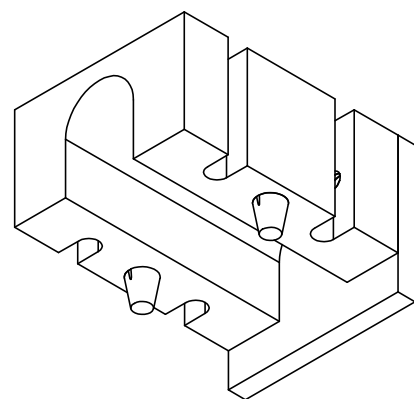
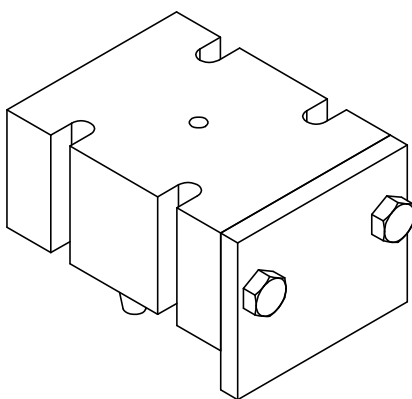
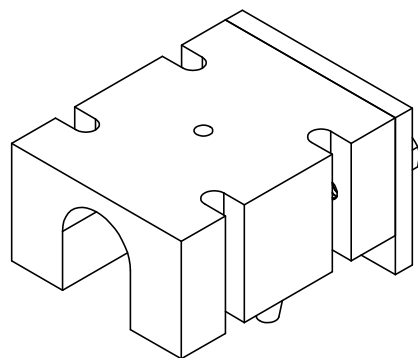
4

3

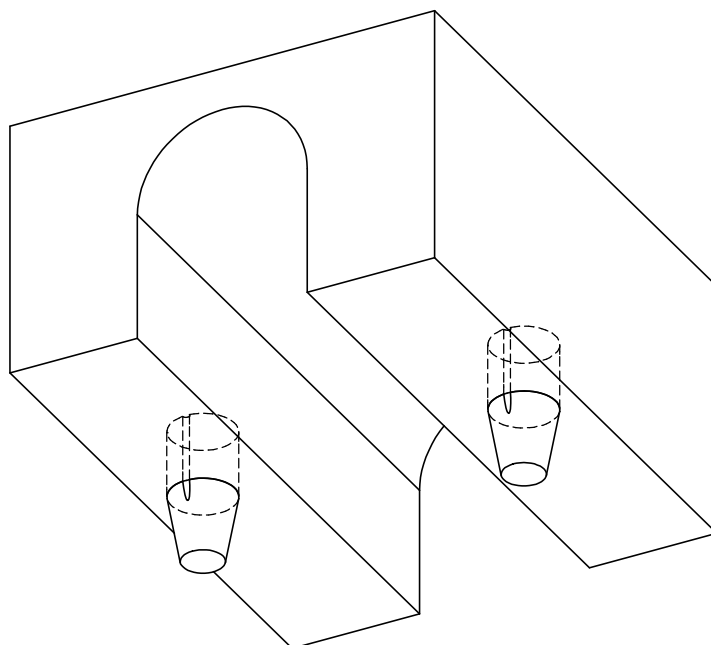
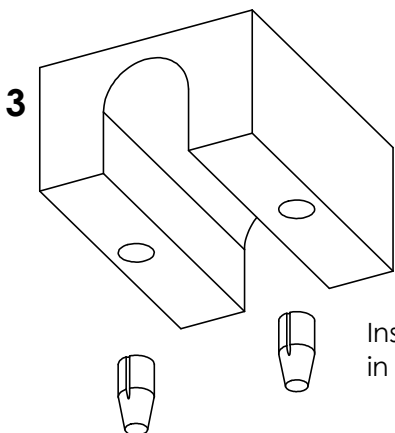
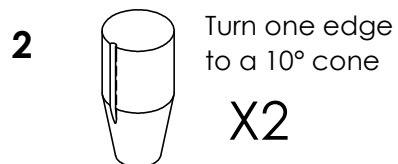
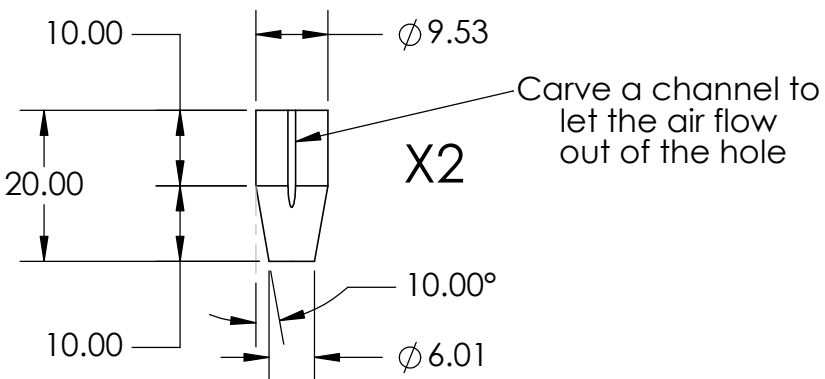
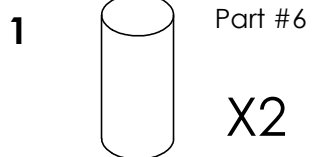
2

1

MOLD BODY: B



MOLD PARTS: #6 and #1



El Tornillo
www.eltornillo.co
Andrés Garzón
Cel: +57 315 682 6121

MOLD BODY:
B: Female body

CONTENT:
Alignment cones for
bodies B and C

PART NUMBER:
1 & 6

DWG NO.
Broom hanger mold

SCALE:1:1

UNITS: MM

SHEET 11 OF 14

Format:
Letter
MM/DD/YY
9/30/2019

4

3

2

1

A

A

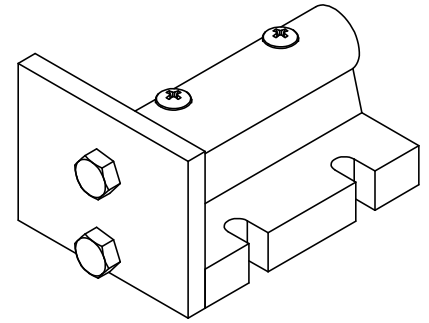
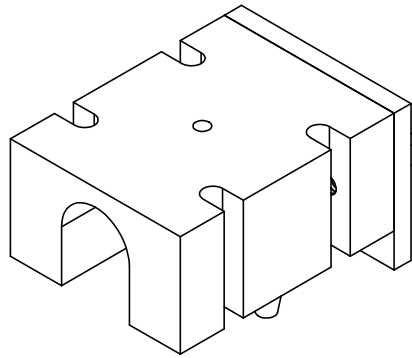
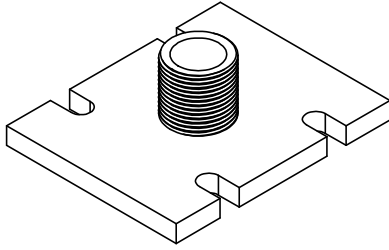
4

3

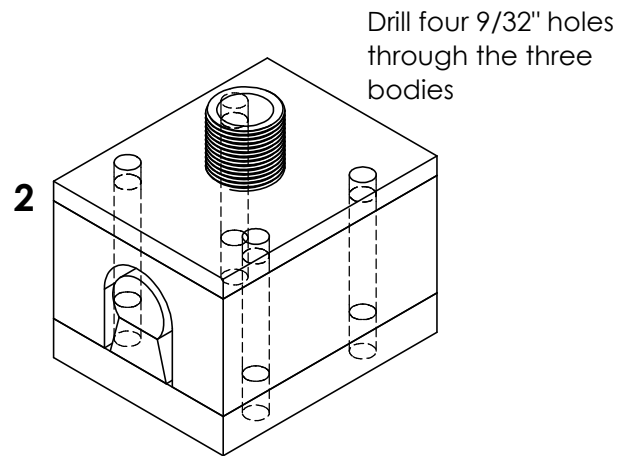
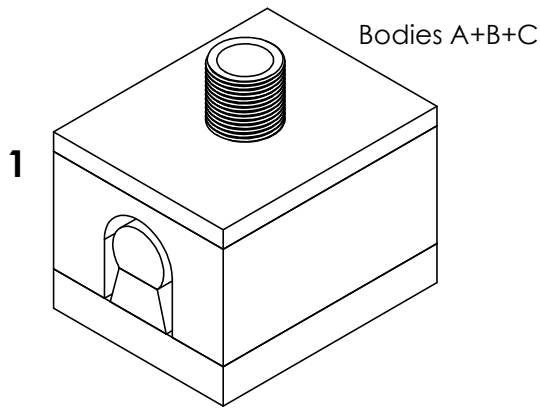
2

1

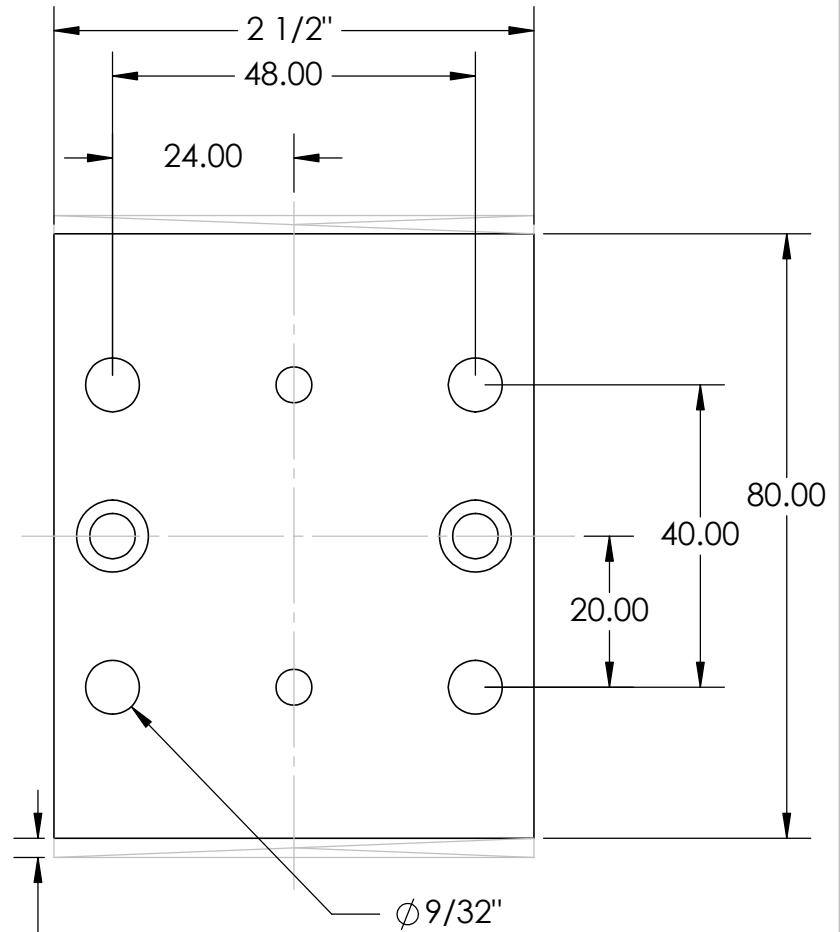
MOLD BODIES: A+B+C



MOLD PARTS: #7,8 + #1,6 + #2,3,5



3 After drilling the holes, fix the pieces tight with the bolts and machine both ends to make them even



El Tornillo
www.eltornillo.co
Andrés Garzón
Cel: +57 315 682 6121

MOLD BODY:
All: A+B+C

CONTENT:
Closing screws holes

PART NUMBER:
1, 2, 3, 5, 6, 7 & 8

DWG NO.
Broom hanger mold

SCALE:1:1

UNITS: MM

SHEET 12 OF 14

Format:
Letter
MM/DD/YY
9/30/2019

4

3

2

1

F

E

D

C

B

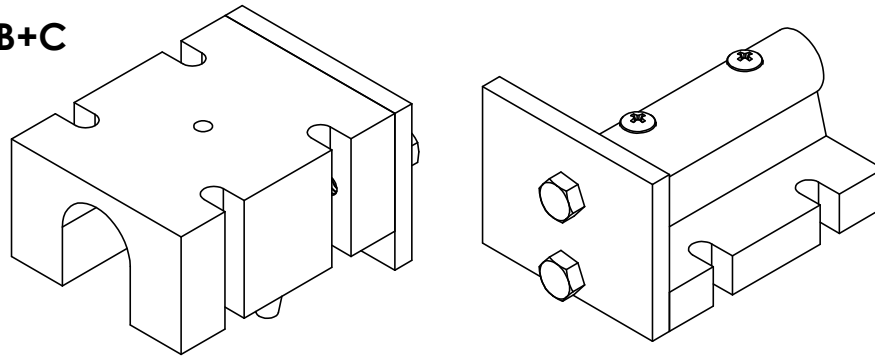
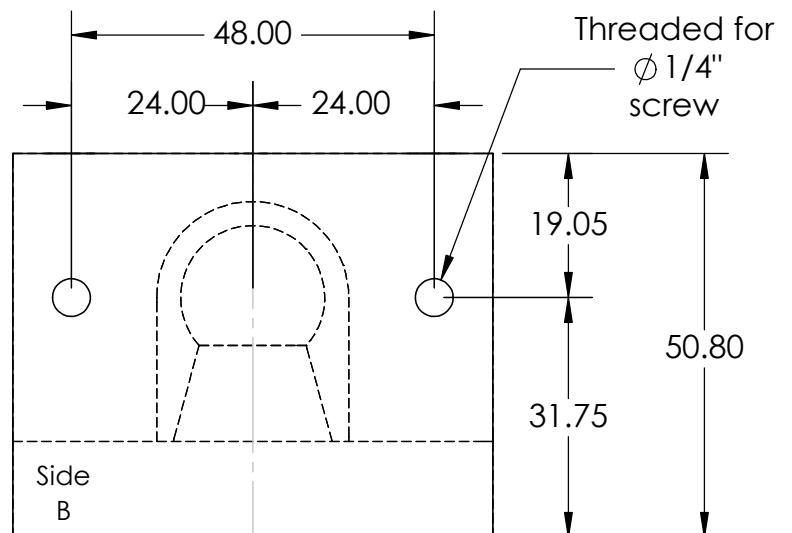
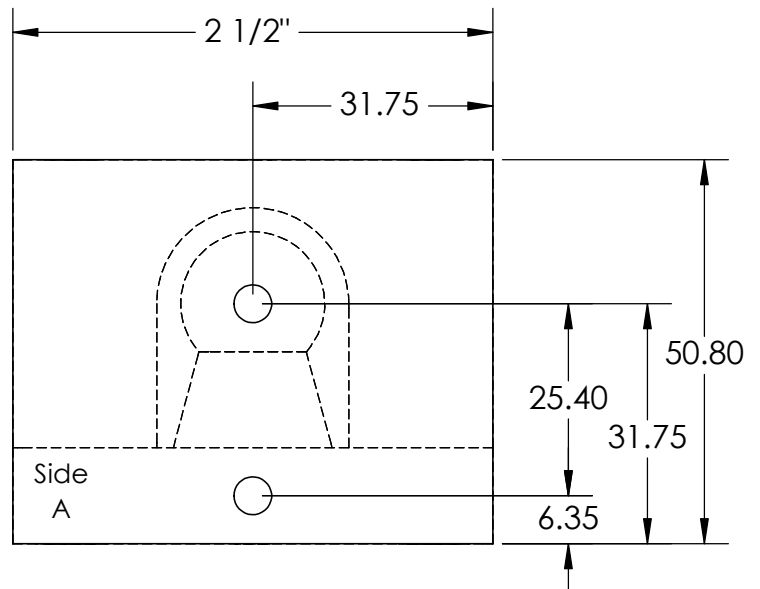
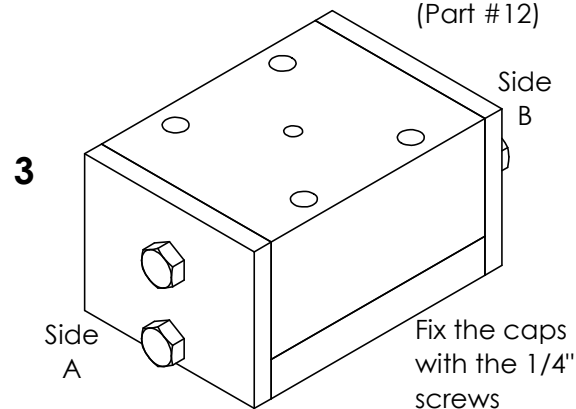
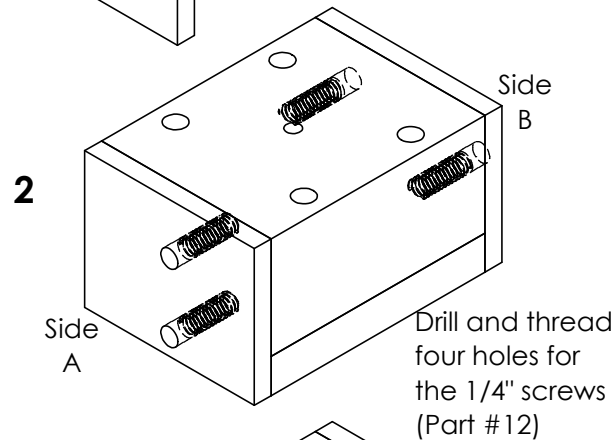
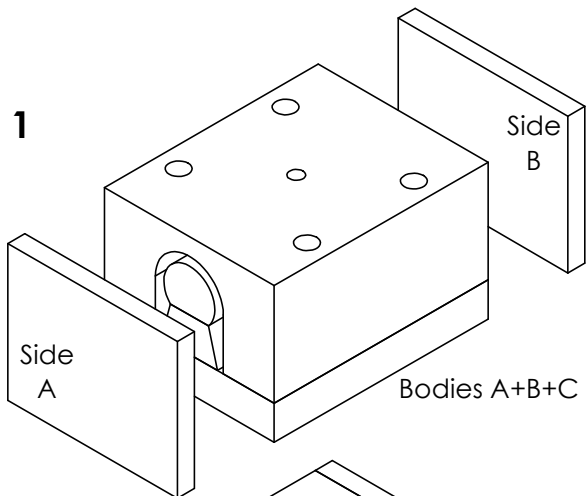
A

4

3

2

1

MOLD BODIES: B+C

MOLD PARTS: Previous + #4a & b



El Tornillo
 www.eltornillo.co
 Andrés Garzón
 Cel: +57 315 682 6121

MOLD BODY:

B+C: Male and Female body

CONTENT:

 Mold Ends Caps
 Fixing Holes

PART NUMBER:

1, 2, 3, 4a, 4b, 5 & 6

DWG NO.:

Broom hanger mold

Format:
LetterMM/DD/YY
9/30/2019

SCALE:1:1

UNITS: MM

SHEET 13 OF 14

4

3

2

1

A

A

4

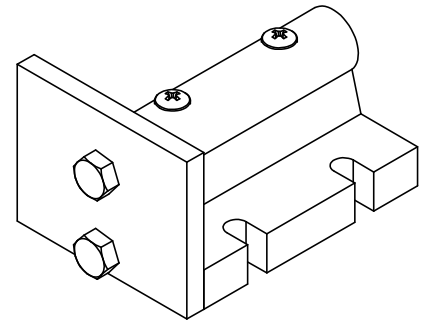
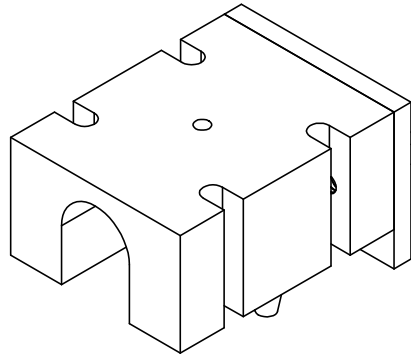
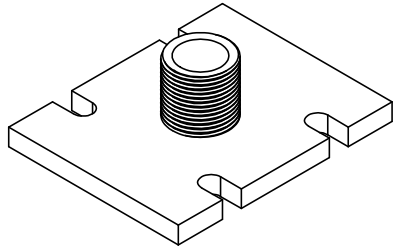
3

2

1

F

MOLD BODY: A+B+C

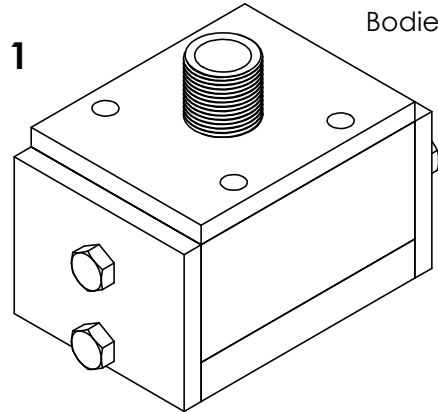


F

E

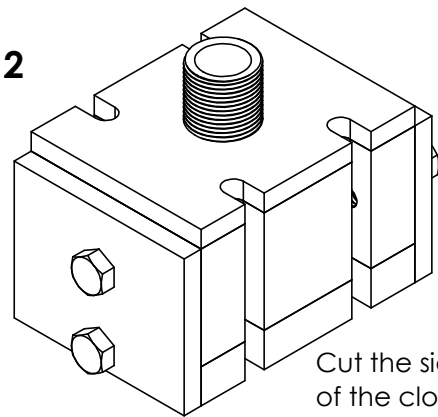
MOLD PARTS ALL

E



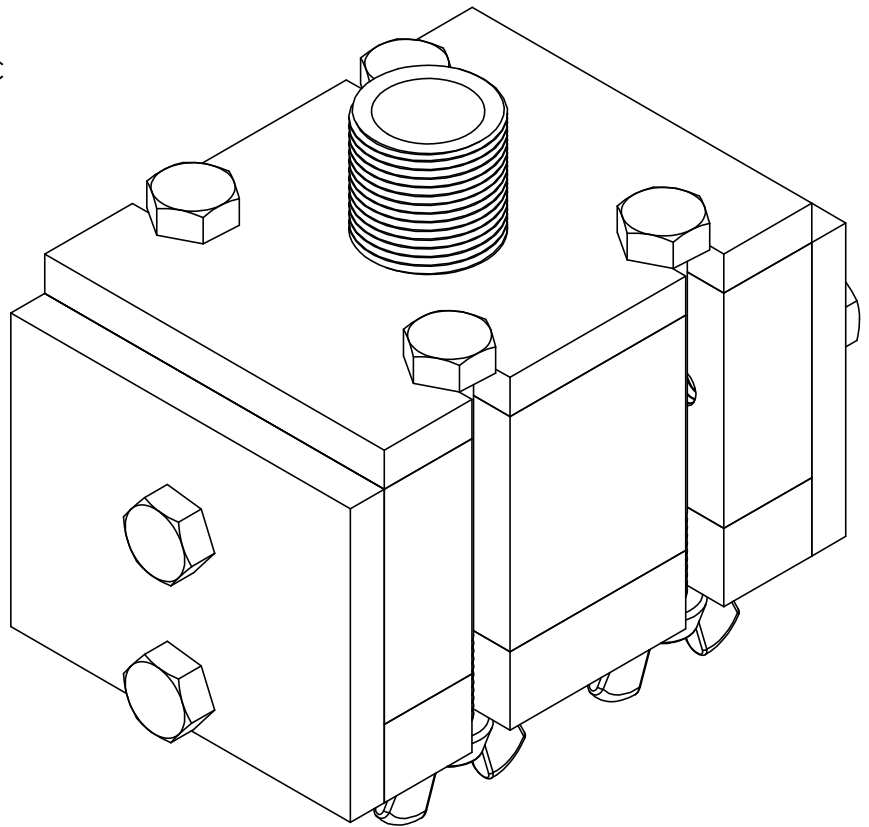
Bodies A+B+C

D



Cut the sides of the closing holes

C



D

B

B

A

A



El Tornillo
 www.eltornillo.co
 Andrés Garzón
 Cel: +57 315 682 6121

MOLD BODY:	A+B+C
CONTENT:	Side Cuts

PART NUMBER:	All: 1 to 14
DWG NO.	Broom hanger mold
SCALE:1:1	UNITS: MM
SHEET 14 OF 14	

Format:	Letter
MM/DD/YY	9/30/2019

4

3

2

1