

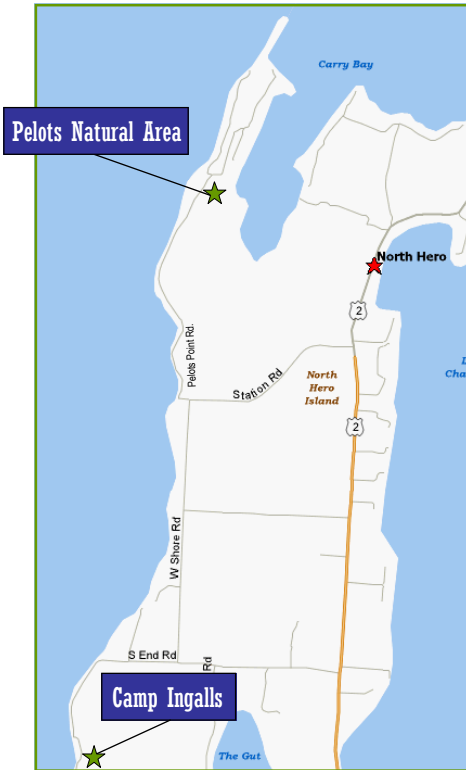
Enjoy an Outing



Explore Nature



See New Things



Pelots Natural Area: From North Hero village: go 0.3 miles south on Route 2. Turn right on Station Road and go 1 mile. At the lake, turn right on Pelots Point Road and proceed 1.3 miles to the parking area.

Camp Ingalls: From North Hero village: go 0.3 miles south on Route 2. Turn right on Station Road and go 1 mile. Turn left on West Shore Road, and then right on South End Road. Continue south for 1.4 miles to the long house and athletic field parking.

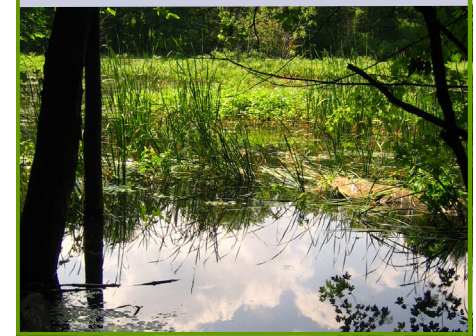


*For more information,
call the North Hero Town Clerk
at 802-372-6926.*

Copyright October 1, 2006



Pelots Natural Area & Camp Ingalls



*Explore the Environment
Spring • Summer • Fall • Winter*

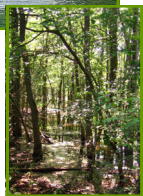


EXPLORE

The LAND ...

Walk and imagine North Hero's geological past.

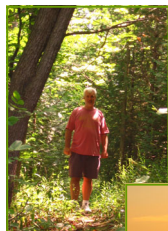
Once, North Hero was part of a tropical ocean beach, and then a part of a vast region of swamps and savannahs, with giant mastodons, beaver and moose.



The LAKE ...

Wander along the trails and picture the changing lake.

Then, glaciers descended from the north to cover all but the tops of Mount Mansfield and Camel's Hump ... gouging out Lake Champlain. As the glacier



melted, Lake Vermont was formed, and then a saltwater sea called the Champlain Sea formed from the Atlantic Ocean. Whales and seals

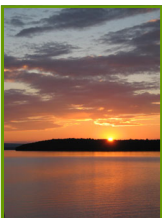
could be found along the shores.

TODAY ...

Explore the trails, seeing how many plants and animals you can find along your way.



Pelots Natural Area has an interpretive nature trail and three miles of walking trails through meadows and



forests and alongside a swamp and the bay. At Camp Ingalls, you can enjoy a half-mile interpretive nature trail, a picnic area with lake and mountain views, as well as athletic fields.

Ecosystems: Who lives where?

Pelots Natural Area has several niches, or small environments where plants and animals live. Here you'll find cedar and deciduous forests, sugarbush, fields, swamps, marshes, bays, and the open lake. Some animals and plants live in only one niche, but others are found in more than one.



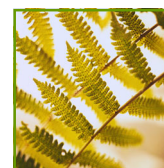
You can use your ears, eyes and nose to discover a variety of animals, plants and fungi. Can you find and identify any of the animal tracks at the top of this page?

Food Webs: Who eats who or what?



Animals and plants live in structures called "webs," depending on one another for food and shelter. Here are four categories of plants and animals you might see:

- **Predators** — Hawks, herons, owls, frogs, pike, turtles, raccoons, bats, dragonflies . . .
- **Consumers** — Turkeys, grouse, song birds, beavers, deer, butterflies, bees, zooplankton (microscopic lake animals) . . .
- **Producers** — Trees, grasses, shrubs, phytoplankton (microscopic lake plants) . . .
- **Recyclers** — Crows, fungi, bacteria, insects, scavengers . . .



How do foxes, rabbits, seeds, and worms depend on one another at the Pelots Natural Area? Can you find places where animals slept or ate?

Enjoy your visit while being sensitive and preserving these natural places.

