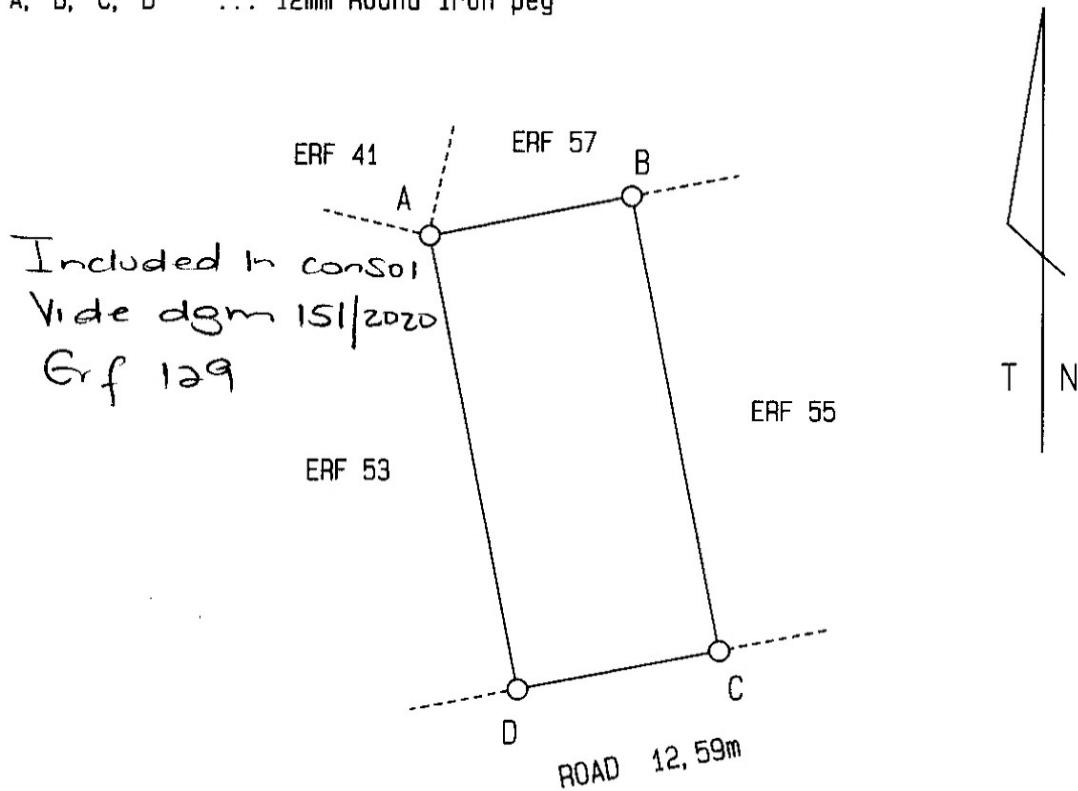


M J Gluckman, Pr. Land Surveyor, Rosebank (Ref: MG461D9)

| SIDES metres | | ANGLES OF DIRECTION | | CO-ORDINATES Y System WG 19. X | | S.G. No. |
|--------------|--------|---------------------|---|-----------------------------------|--------------|---|
| | | CONSTANTS | | +0, 00 | +3700000, 00 | 1523/2013 |
| AB | 27, 08 | 258 59 00 | A | + 43 466, 97 | + 66 658, 22 | Approved <i>[Signature]</i> for Surveyor-General 2013.07.16 |
| BC | 61, 25 | 348 59 00 | B | + 43 440, 39 | + 66 653, 04 | |
| CD | 27, 08 | 78 59 00 | C | + 43 428, 69 | + 66 713, 17 | |
| DA | 61, 25 | 168 59 00 | D | + 43 455, 26 | + 66 718, 34 | |
| | | 61BA1 | ⊕ | + 43 841, 56 | + 66 453, 51 | |
| | | 4R21 | ⊕ | + 43 145, 56 | + 66 622, 64 | |

DESCRIPTIONS OF BEACONS:

A, B, C, D ... 12mm Round iron peg



SCALE 1/1000

The figure A B C D represents 1658⁹ square metres of land being

ERF 54 KNOLE PARK

situate in the Subdivided Estate of Knole Park, in the City of Cape Town Administrative District of Cape Province of the Western Cape

Surveyed in May 2013

by me,

[Signature]
(PLS 0895) M J Gluckman
Professional Land Surveyor

| | | |
|---|--|--|
| This diagram is annexed to No. <i>T 4662/2014</i> dated i.f.o. Registrar of Deeds | The original diagram is No. Transfer No. <i>LPI C0160027</i> | File No. <i>S/9795/13/1</i> annexed to S.R. No. Comp. AHNC-2322 (M1773) Gen Plan TP 127 LD S.R. No. <i>E702/2013</i> |
|---|--|--|

ERF 54 KNOLE PARK

S