

# Michigan State University

---

Campus Planning Effort

Draft Final Recommendations  
April 26, 2023



# Process

## **Analysis**

**Spring – Summer 2022**

The project team will learn as much about the campus as possible through mapping, surveys, interviews, and review of existing plans and studies.

## **Preliminary Recommendations**

**Summer – Fall 2022**

Incorporating the MSU community's ideas and feedback on the concept scenarios, the team will think about how to make those ideas a reality.

## **Recommendations and Documentation**

**Winter 2022 – Summer 2023**

The project process will conclude with a refined final plan, including requisite detail, provided in an accessible and easy-to-understand way. The Plan belongs to all Spartans!

# April Open Houses in STEM



# Campus Framework



**East Lansing** The overall strategy sensitively adds density at its geographic center, improves connectivity to edge precincts, and provides opportunities for partnerships, innovation, and large land uses at its eastern and western edges.



**1 North Historic Campus** Strategic building renovations and replacements support incremental academic growth within the Historic North Campus, and help to frame and activate key open spaces.



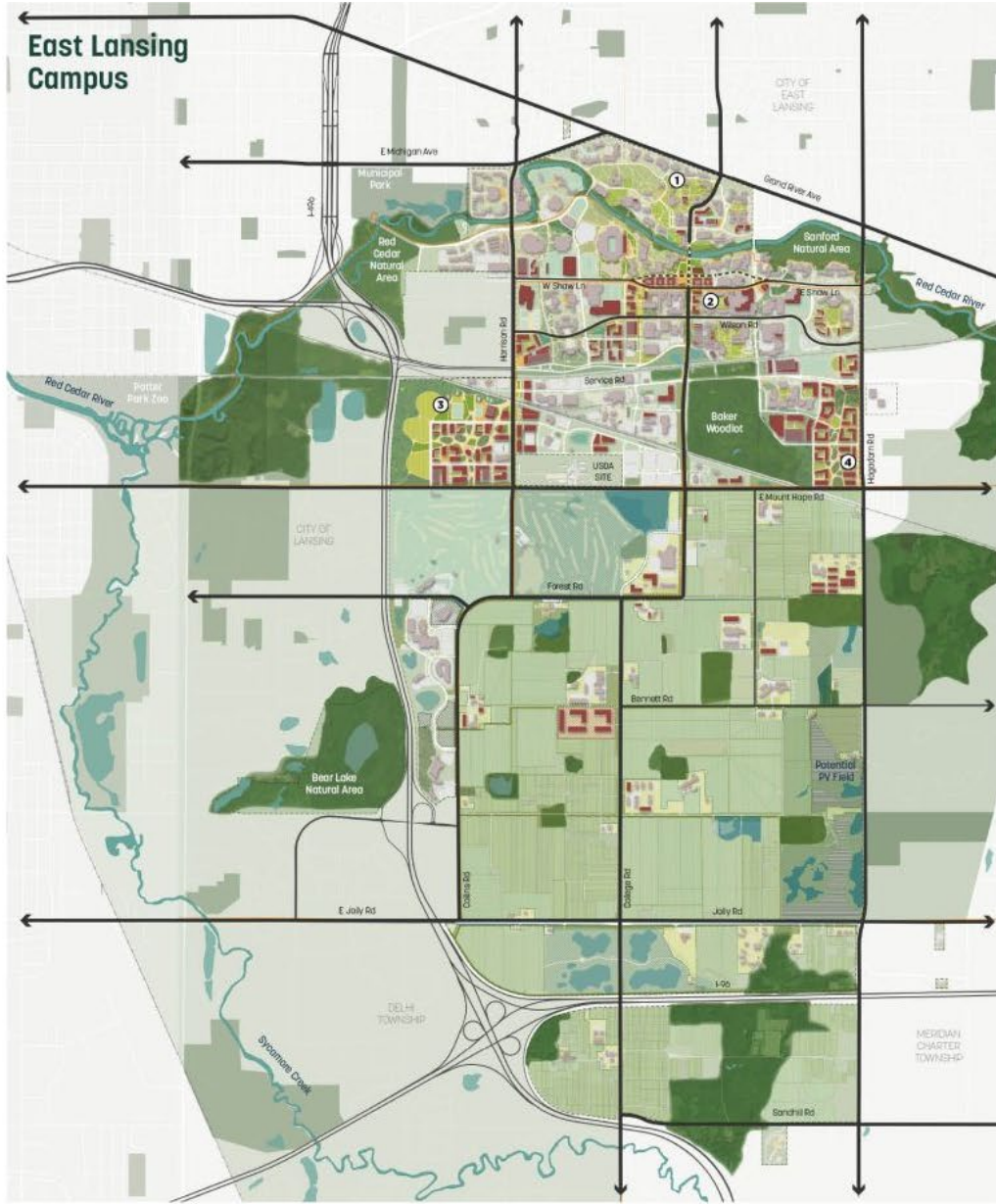
**2 Central Campus** Densifying the geographic center of campus around Farm and Show Lanes improves continuity between the north and the south parts of campus as well as connectivity from east to west.



**3 Spartan Village** The long-term vision for Spartan Village focuses on leveraging strategic partnerships that support the University's mission.



**4 South Academic Campus** The long-term vision for the South Academic Campus combines Academic, Research and Partnership facilities that expand the current Bioengineering presence and creates a southeastern gateway for MSU.



**Legend:**   
 Primary Vehicular Corridor   
 Potential Development Site   
 Existing Farmland Units (Potential Campus Infill of Research)



# Campus Plan North of Mount Hope Road



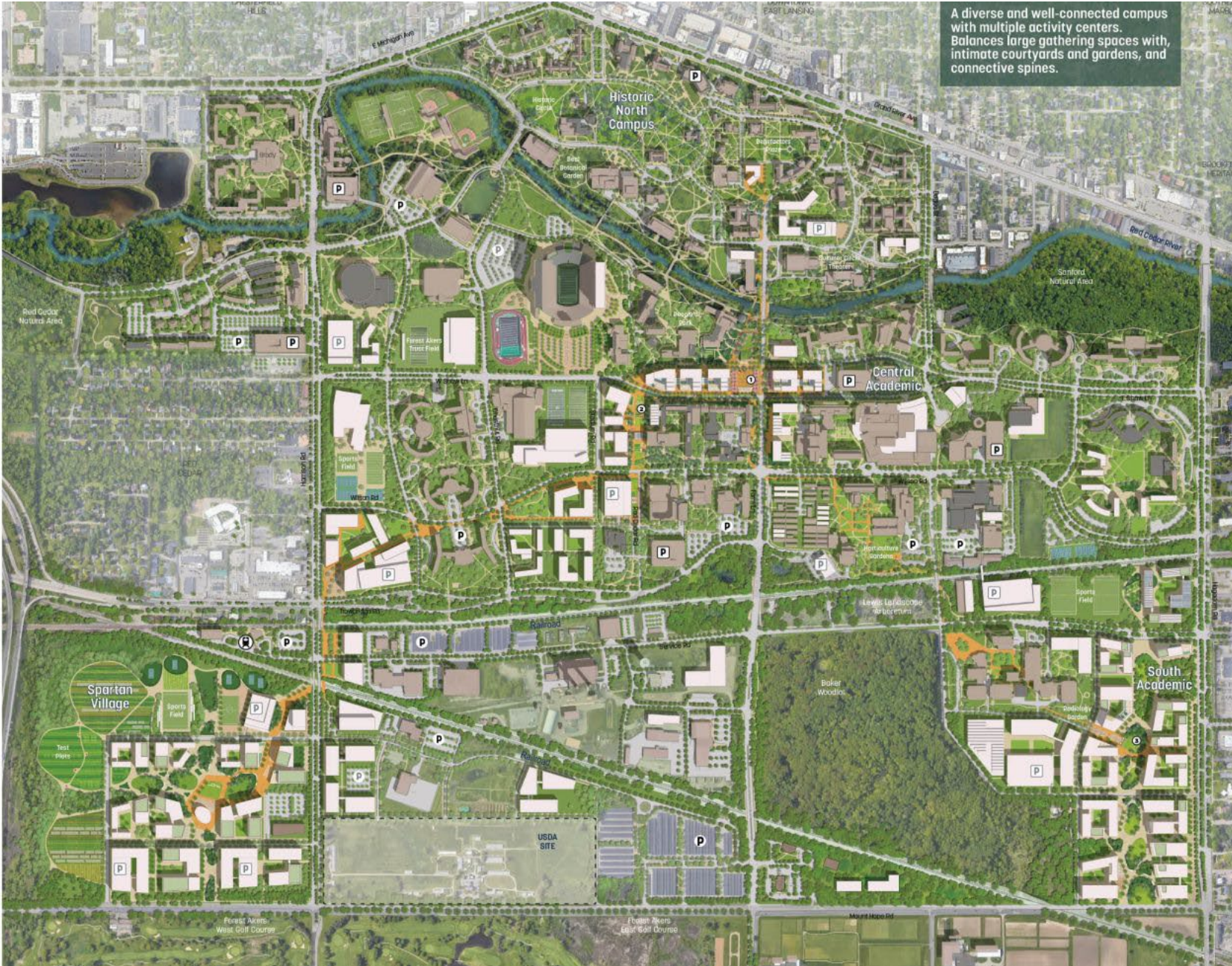
1 Central Plaza @ Farm and Shaw



2 Red Cedar Promenade



3 South Academic Plaza



A diverse and well-connected campus with multiple activity centers. Balances large gathering spaces with intimate courtyards and gardens, and connective spines.

- Legend:
- Existing MSU Buildings
  - Potential Development Site
  - East Lansing Amtrak Station
  - Existing Structured Parking
  - Existing Surface Parking
  - Potential Structured Parking
  - Potential Surface Parking



# Proposed Primary Building Use



# Farm Lands South of Mount Hope Road

## Farmland Ecological Strategies



① Woody Shrub Buffer



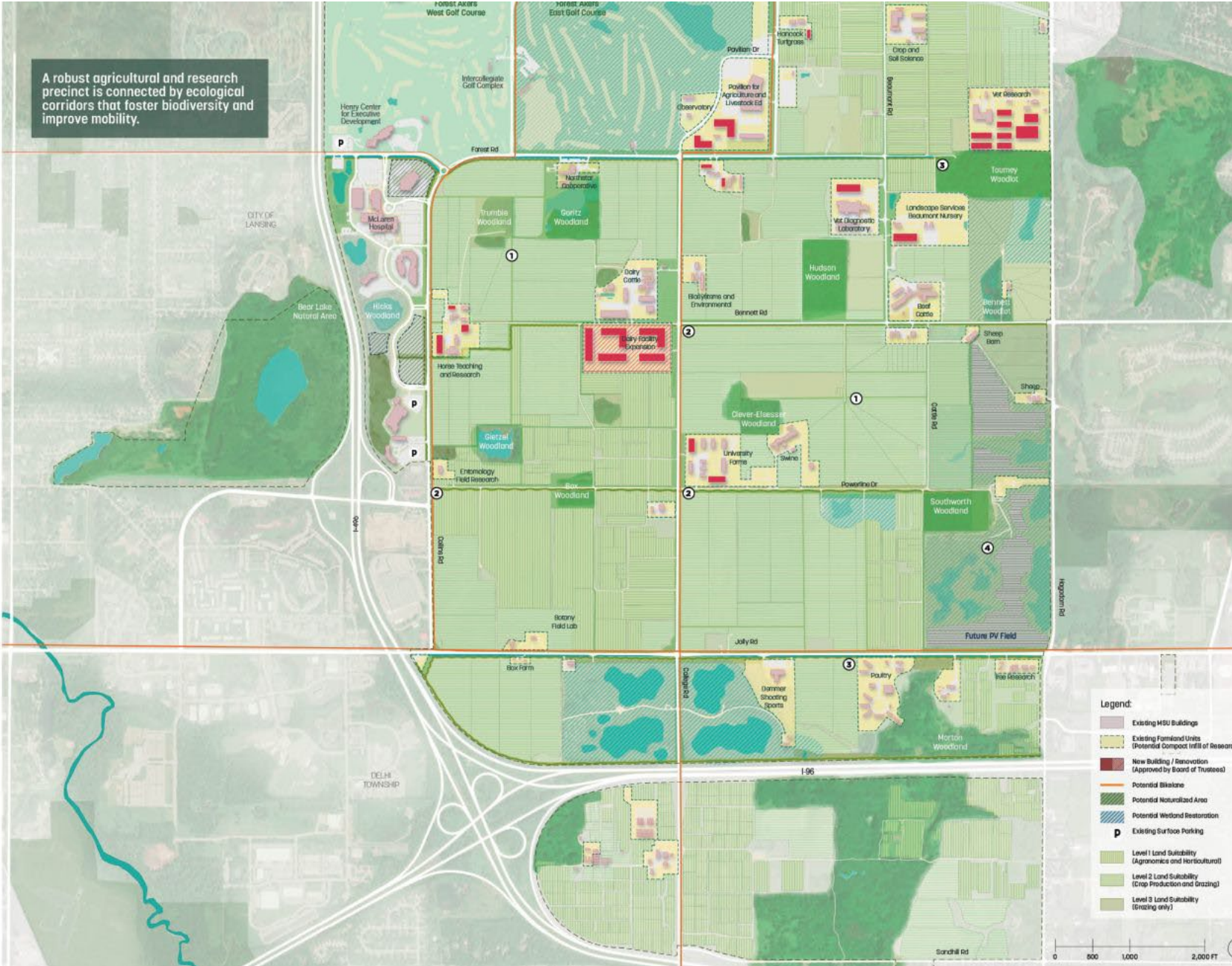
② Prairie Strip



③ Wetland Strip



④ Potential Agri-voltaic

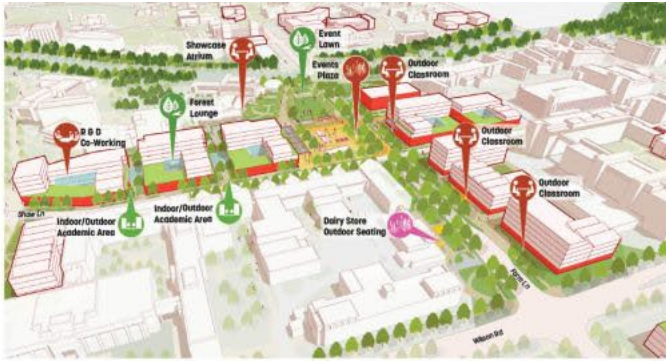




# Farm and Shaw Plaza: Heart of Campus



**Building Program** The existing parking lots near the intersections of Shaw Lane and Farm Lane would provide growth capacity for MSU's academic and research programs and enable the renewal and renovation of existing facilities.



**Open Space** The addition of facilities near Shaw Lane and Farm Lane would support an expanded open space network that would support outdoor events, informal interactions, and pedestrian connectivity through the heart of MSU's campus.



**Connectivity** The campus core prioritizes pedestrian mobility which maximizes the amount of time students, faculty, and staff spend on campus. This fosters the informal collisions and connections that are foundational to the exchange of ideas and development of innovation.



Aerial View of Proposed Plaza at Shaw and Farm



**Illustrative Plan**

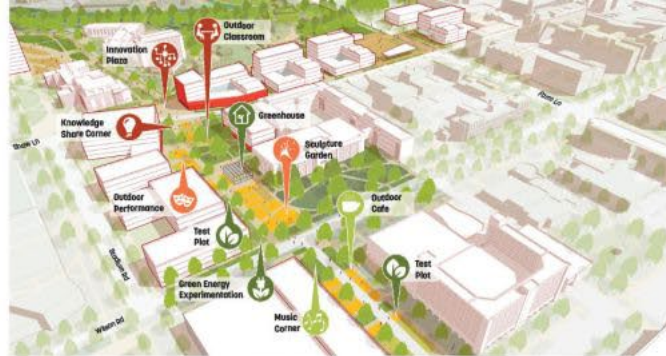


# Red Cedar Promenade



## Building Program

The area along Wilson Road and Red Cedar Road provide academic and research growth space and improve connectivity between the campus center and the southwestern gateway at Trowbridge Road and Harrison Road.



## Open Space

The plan envisions Red Cedar Road as a more pedestrian-oriented corridor with a mix of civic landscapes as well as outdoor research plots that highlight the University's unique academic programming.



## Connectivity

In the long-term, Red Cedar Road would be transformed into a pedestrian-oriented promenade and Trowbridge Road extended east to Farm Lane, shifting traffic away from the campus center and unlocking additional development capacity.



Pedestrian View of Proposed Red Cedar Promenade looking South

## Illustrative Plan



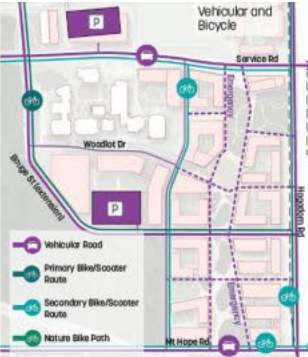
# South Academic Campus



**Building Program** A mix of academic, research, and partnership growth along Haggadam Road enhance the University's presence at its southeastern gateway while supporting the existing biomedical district at the intersection of Bogue Street and Service Road.



**Open Space** New development sites frame a spine of open space that connect the precinct to an expansion of Baker Woodlot, ensuring that future generations of faculty and students have access to this unique resource for learning and research.



**Connectivity** Bogue Street would be extended to the east, providing an additional gateway to campus from Haggadam Road. Within the precinct, the north-south open space would provide a spine that prioritizes pedestrian mobility.



Pedestrian View of Proposed South Academic Central Gathering Space, looking North

**Illustrative Plan**



**Thank you**