

1.25

9157

13971

CONDOMINIUM PLAN IN NORTH ANDOVER, MA.

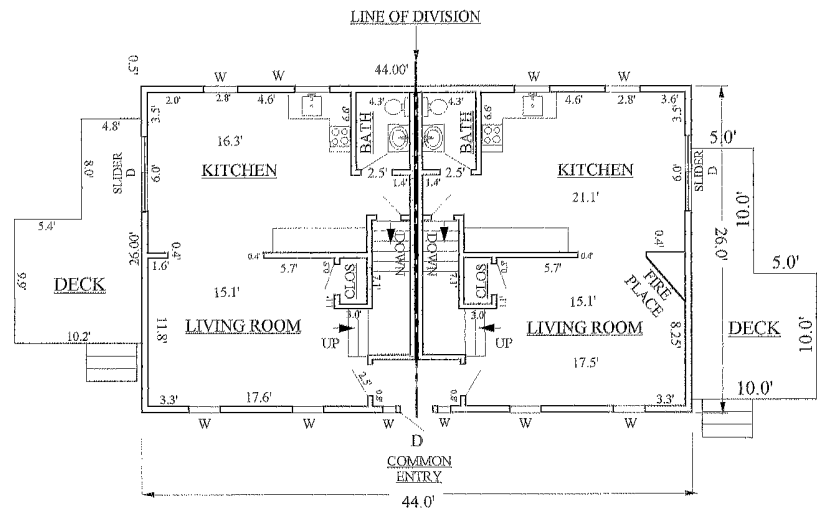
NOTES:

SEE ASSESSORS MAP #27
PARCEL (part #1 of: see plan#13766)
SEE PLAN #13766, 7250,11567, 11568,
7599 (C.L.O.) @ THE N.E.R.D.
THE ZONING DISTRICT IS R-4.
DEED BOOK 5793 PAGE 42
THE C.B.A. ON BOTH LOTS IS 100%

DRAWN FOR
**WAVERLEY ROAD
CONDOMINIUMS**



SCOTT L. GILES, R.P.L.S.
FRANK S. GILES II, P.L.S.
50 DEERMEADOW ROAD
NORTH ANDOVER, MA 01845
(978) 683-2645



AREA = 520 S.F.
(PER FLOOR)

UNIT
HOUSE #727
FIRST FLOOR
CEILING HEIGHT = 7.7
ELEVATION = 16.5

AREA = 520 S.F.
(PER FLOOR)

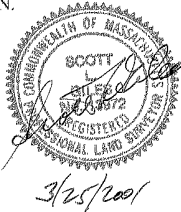
UNIT
HOUSE #725
FIRST FLOOR
CEILING HEIGHT = 7.7
ELEVATION = 16.5

I CERTIFY THAT THIS PLAN FULLY & ACCURATELY
DEPICTS THE LAYOUT OF THE UNIT, ITS LOCATION,
DIMENSIONS, APPROXIMATE AREA, MAIN ENTRANCE,
& IMMEDIATE COMMON AREA TO WHICH IT HAS ACCESS
AS BUILT.

THIS IS TO CERTIFY THAT I HAVE CONFORMED
WITH THE RULES AND REGULATIONS OF THE
REGISTERS OF DEEDS IN PREPARING THIS PLAN.

Scott L. Giles
SCOTT L. GILES, P.L.S.

MARCH 25, 2001
DATE



REGISTRY OF DEEDS USE ONLY

Plan # 13971
Registry of Deeds
North District Essex County
Received & Recorded
March 30, 2001 at 12:00 PM
Attest:
Thomas J. Burke
Register of Deeds

13971

1.25

125

13971

CONDOMINIUM PLAN
IN
NORTH ANDOVER, MA.

DRAWN FOR
WAVERLEY ROAD
CONDOMINIUMS

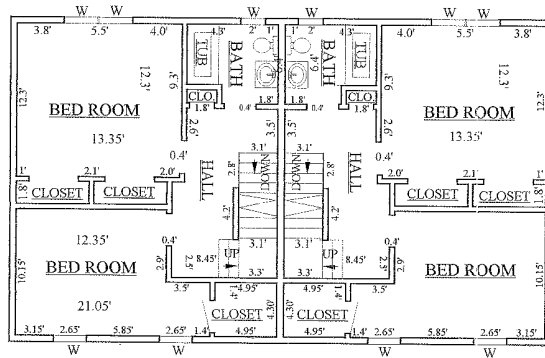
NOTES:

SEE ASSESSORS MAP #27
PARCEL (part #1 of: see plan#13766)
SEE PLAN #13766, 7250,11567, 11568,
7599 (C.L.O.) @ THE N.E.R.D.
THE ZONING DISTRICT IS R-4.
DEED BOOK 5793 PAGE 42
THE C.B.A. ON BOTH LOTS IS 100%

SCALE: 1"= 10' DATE: 3/25/01



SCOTT L. GILES, P.L.S.
FRANK S. GILES II, P.L.S.
50 DEERMEADOW ROAD
NORTH ANDOVER, MA 01845
(978) 683-2645



AREA=520 S.F.(PER FLOOR)

AREA=520 S.F.(PER FLOOR)

UNIT

UNIT

HOUSE 727#

HOUSE#725

SECOND FLOOR

SECOND FLOOR

CEILING HEIGHT = 7.7'
(ELEVATION = 25.2)

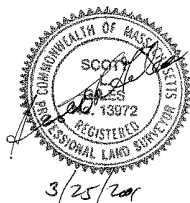
CEILING HEIGHT = 7.7'
(ELEVATION = 25.2)

I CERTIFY THAT THIS PLAN FULLY & ACCURATELY
DEPICTS THE LAYOUT OF THE UNIT, ITS LOCATION,
DIMENSIONS, APPROXIMATE AREA, MAIN ENTRANCE,
& IMMEDIATE COMMON AREA TO WHICH IT HAS ACCESS
AS BUILT.

THIS IS TO CERTIFY THAT I HAVE CONFORMED
WITH THE RULES AND REGULATIONS OF THE
REGISTERS OF DEEDS IN PREPARING THIS PLAN.

Scott L. Giles
SCOTT L. GILES, P.L.S.

MARCH 25, 2001
DATE



3/25/2001

REGISTRY OF DEEDS USE ONLY

Plan # 13971
Registry of Deeds
North District Essex County
Received & Recorded
March 30, 2001 at 12:00 PM.
Attest:

Thomas J. Burke

Registry of Deeds

13971

1.25

1.25

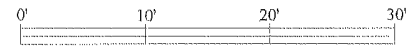
CONDOMINIUM PLAN IN NORTH ANDOVER, MA.

NOTES:

SEE ASSESSORS MAP #27
PARCEL (part #1 of: see plan#13766)
SEE PLAN #13766, 7250,11567, 11568,
7599 (C.L.O.) @ THE N.E.R.D.
THE ZONING DISTRICT IS R-4.
DEED BOOK 5793 PAGE 42
THE C.B.A. ON BOTH LOTS IS 100%

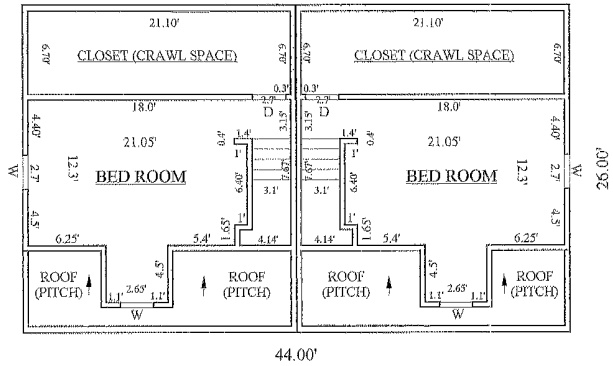
DRAWN FOR
**WAVERLEY ROAD
CONDOMINIUMS**

SCALE: 1"= 10' DATE: 3/25/01



SCOTT L. GILES, R.P.L.S.
FRANK S. GILES II, P.L.S.
50 DEERMEADOW ROAD
NORTH ANDOVER, MA 01845
(978) 683-2645

13971



AREA = 520 S.F.
(PER FLOOR)

AREA = 520 S.F.
(PER FLOOR)

UNIT #

UNIT #

THIRD FLOOR
(ATTIC)

THIRD FLOOR
(ATTIC)

CEILING HEIGHT = 7.6'
ELEVATION = 33.8

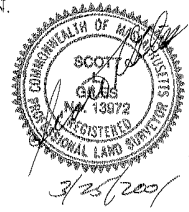
CEILING HEIGHT = 7.6'
ELEVATION = 33.8

I CERTIFY THAT THIS PLAN FULLY & ACCURATELY
DEPICTS THE LAYOUT OF THE UNIT, ITS LOCATION,
DIMENSIONS, APPROXIMATE AREA, MAIN ENTRANCE,
& IMMEDIATE COMMON AREA TO WHICH IT HAS ACCESS
AS BUILT.

THIS IS TO CERTIFY THAT I HAVE CONFORMED
WITH THE RULES AND REGULATIONS OF THE
REGISTERS OF DEEDS IN PREPARING THIS PLAN.

Scott L. Giles
SCOTT L. GILES, P.L.S.

MARCH 25, 2001
DATE



REGISTRY OF DEEDS USE ONLY

Plan # 13971
Registry of Deeds
North District Essex County
Received & Recorded
March 30, 2001 at 12:00 P.M.
Attest:
Thomas B. ...
Register of Deeds

13971

1.25

CONDOMINIUM PLAN
IN
NORTH ANDOVER, MA.

DRAWN FOR
**WAVERLEY ROAD
CONDOMINIUMS**

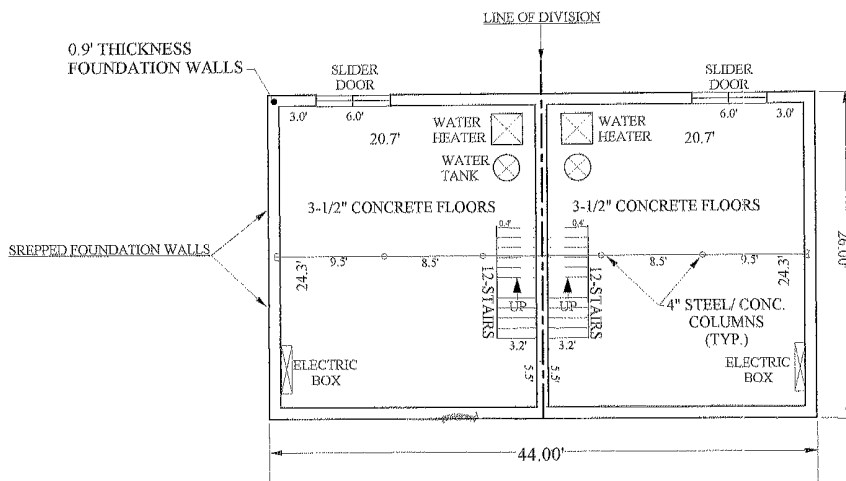
NOTES:

SEE ASSESSORS MAP #27
PARCEL (part #1 of: see plan#13766)
SEE PLAN #13766, 7250,11567, 11568,
7599 (C.L.O.) @ THE N.E.R.D.
THE ZONING DISTRICT IS R-4.
DEED BOOK 5793 PAGE 42
THE C.B.A. ON BOTH LOTS IS 100%

SCALE: 1"= 10' DATE: 3/25/01



SCOTT L. GILES, P.L.S.
FRANK S. GILES II, P.L.S.
50 DEERMEADOW ROAD
NORTH ANDOVER, MA 01845
(978) 683-2645



AREA=520 S.F.(PER FLOOR)

AREA=520 S.F.(PER FLOOR)

UNIT
HOUSE #727
BASEMENT

UNIT
HOUSE #725
BASEMENT

CEILING HEIGHT = 7.8'
Datum = 0 = ELEVATION

CEILING HEIGHT = 7.8'
Datum = 0 = ELEVATION

TOTAL AREA PER UNIT = 2,080 S.F.

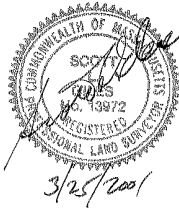
TOTAL AREA PER UNIT = 2,080 S.F.

I CERTIFY THAT THIS PLAN FULLY & ACCURATELY
DEPICTS THE LAYOUT OF THE UNIT, ITS LOCATION,
DIMENSIONS, APPROXIMATE AREA, MAIN ENTRANCE,
& IMMEDIATE COMMON AREA TO WHICH IT HAS ACCESS
AS BUILT.

THIS IS TO CERTIFY THAT I HAVE CONFORMED
WITH THE RULES AND REGULATIONS OF THE
REGISTERS OF DEEDS IN PREPARING THIS PLAN.

Scott L. Giles
SCOTT L. GILES, P.L.S.

MARCH 25, 2001
DATE



REGISTRY OF DEEDS USE ONLY

Plan # 13971
Registry of Deeds
North District Essex County
Received & Recorded
March 30, 2001 at 12:01 P.M.
Attest:
Thomas Bunker
Registry of Deeds

13971

125

125

13971