

# 51 High Ridge, Boxford MA

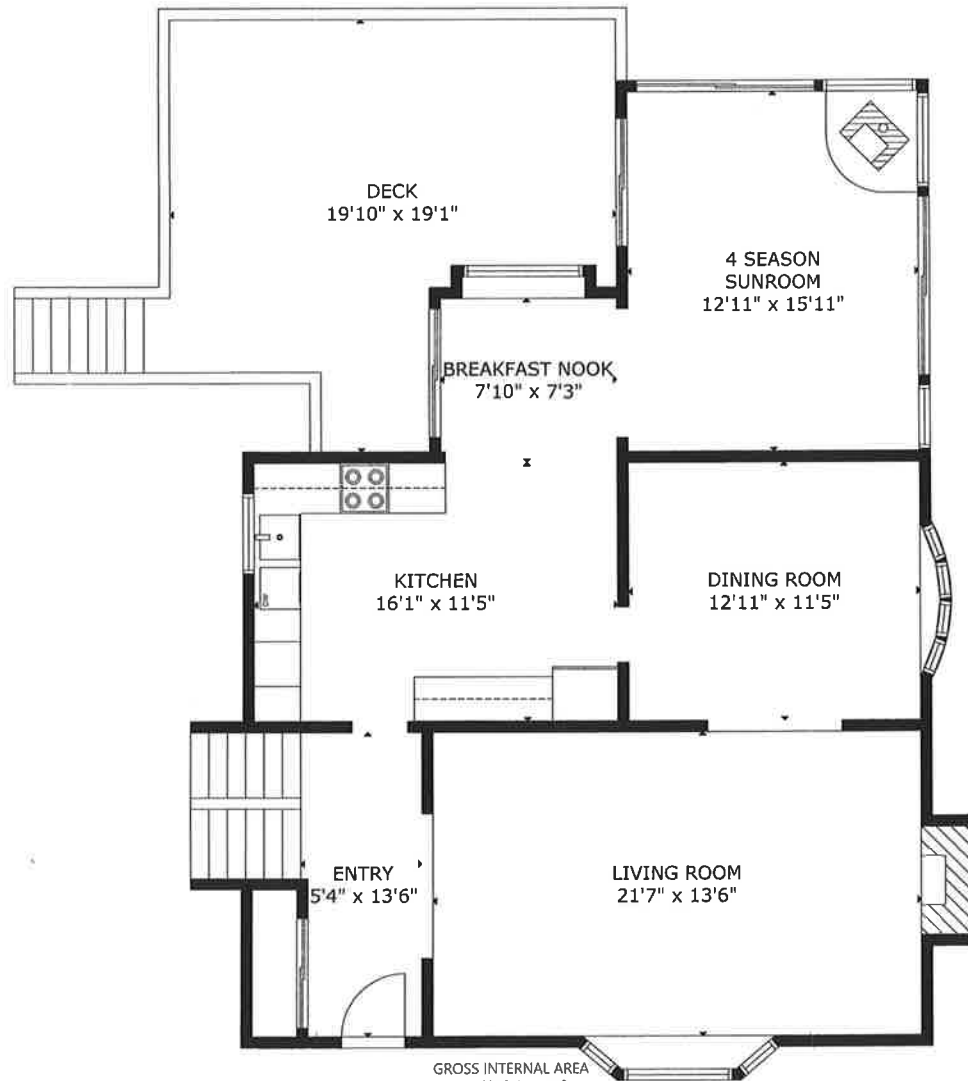


GROSS INTERNAL AREA  
TOTAL: 3,477 sq ft  
LOWER LEVEL: 1,013 sq ft, MAIN LEVEL: 1,071 sq ft, SECOND LEVEL: 1,393 sq ft  
EXCLUDED AREAS: GARAGE: 827 sq ft, DECK: 312 sq ft  
BASEMENT: 715 sq ft, STORAGE: 233 sq ft  
SIZES AND DIMENSIONS ARE APPROXIMATE, ACTUAL MAY VARY

LOWER LEVEL



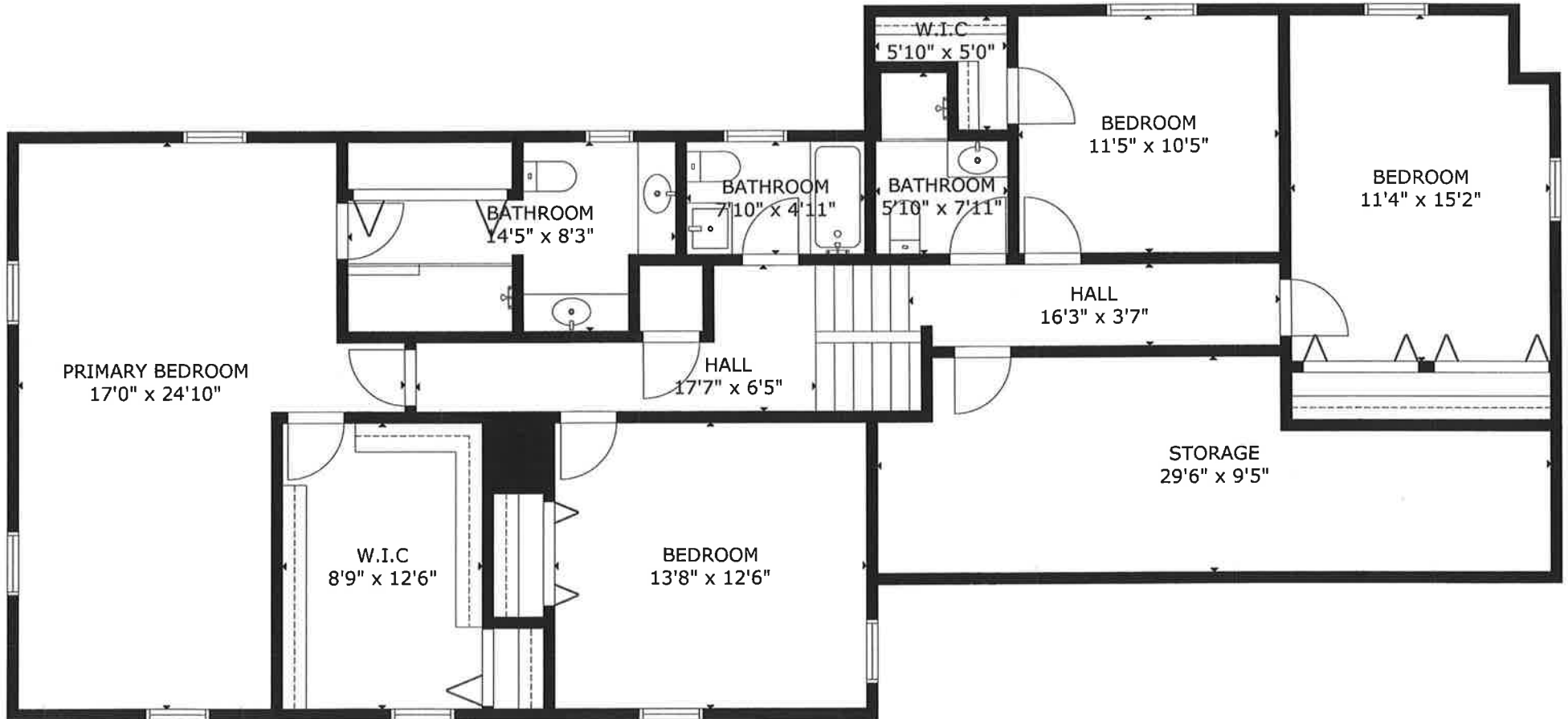
# 51 High Ridge, Boxford MA



GROSS INTERNAL AREA  
TOTAL: 3,477 sq ft  
LOWER LEVEL: 1,013 sq ft, MAIN LEVEL: 1,071 sq ft, SECOND LEVEL: 1,393 sq ft  
EXCLUDED AREAS: GARAGE: 827 sq ft, DECK: 312 sq ft  
BASEMENT: 715 sq ft, STORAGE: 233 sq ft  
SIZE AND DIMENSIONS ARE APPROXIMATE, ACTUAL MAY VARY

MAIN LEVEL

# 51 High Ridge, Boxford MA



GROSS INTERNAL AREA  
TOTAL: 3,477 sq ft  
LOWER LEVEL: 1,013 sq ft, MAIN LEVEL: 1,071 sq ft, SECOND LEVEL: 1,393 sq ft  
EXCLUDED AREAS: GARAGE: 827 sq ft, DECK: 312 sq ft  
BASEMENT: 715 sq ft, STORAGE: 233 sq ft  
SIZE AND DIMENSIONS ARE APPROXIMATE, ACTUAL MAY VARY

SECOND LEVEL

# 51 High Ridge, Boxford MA



GROSS INTERNAL AREA  
 TOTAL: 3,477 sq ft  
 LOWER LEVEL: 1,013 sq ft, MAIN LEVEL: 1,071 sq ft, SECOND LEVEL: 1,393 sq ft  
 EXCLUDED AREAS: GARAGE: 827 sq ft, DECK: 312 sq ft  
 BASEMENT: 715 sq ft, STORAGE: 233 sq ft  
 SEE ALSO DIMENSIONS ARE APPROXIMATE. ACTUAL MAY VARY