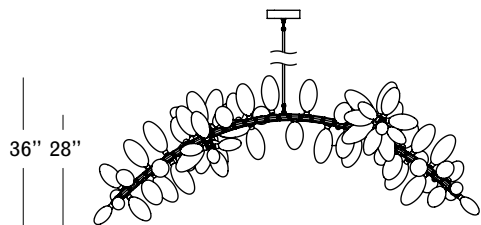


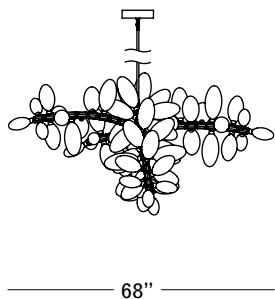


Brushed Brass
White Glass With Tapered Pods

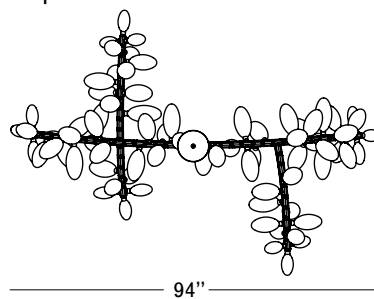
Front



Side



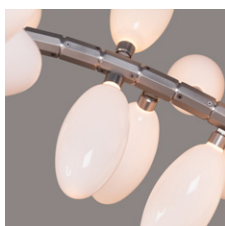
Top



Finishes



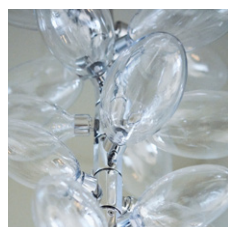
Black
\$30,000
16 weeks



German Silver
\$30,000
16 weeks



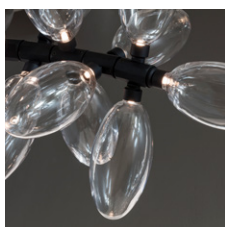
Brushed Brass
\$30,000
16 weeks



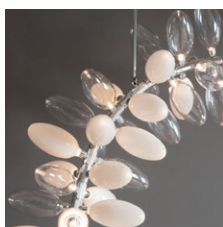
Polished Aluminum
\$36,000
16 weeks



White Glass



Clear Glass



Mixed Glass

Specifications

Height: 36in / 92cm
 Depth: 68in / 172cm
 Width: 94in / 239cm
 Weight: 75lb / 34kg
 Max Wattage: 92w
 Minimum Drop: 44in / 112cm
 Shown with tapered pods

Suspension: Ships with adjustable 36" or 72" stem cut to length on site
 Canopy: Ø5" X 2" with hang straight
 Materials: Machined aluminum, glass
 Bulbs: G4|12V|1.2W|2700K Bi-Pin LED, Dimmable, transformer provided



UL, cUL (120V)

Inspiration

The inspiration for the versatile lighting system came from the natural drape and growth patterns of the Burro's Tail plant. Each component of the spine is machined from solid aluminum and when assembled, fully articulates within its self-regulated range of motion, creating a rational curvature. The glass shades are mold-blown by hand and illuminated by LEDs.

Designed by Karl Zahn for Lindsey Adelman Studio.