

# KNOW Homoeopathy Journal

Bi-Annual, Indexed, Double-Blind, Peer-Reviewed, Research Scholarly, Online Journal in Field of Homoeopathy

KNOW Homoeopathy Journal Vol-3 & Issue-2, 18 October 2023, Published at

<https://www.knowhomoeopathyjournal.com/2023/10/volume-3-issue-2.html>, Pages: 79 to 84, Title: Significance of concept of “Multiple Intelligence” in homoeopathic prescription, Authored By: Dr. Aditi Goyal (Associate Professor in Department of Case Taking and Repertory-Bakson Homoeopathic Medical College, Greater Noida, Uttar Pradesh, India.)



VOLUME-3 ISSUE-2  
OCTOBER 2023

## ARTICLE

### Title: Significance of concept of “Multiple Intelligence” in homoeopathic prescription

Authored By: Dr. Aditi Goyal

BHMS, M.D (Hom.), PGD

Associate Professor in Department of “Case Taking and Repertory” at Bakson Homoeopathic Medical College, Greater Noida, Uttar Pradesh, India.

## ABSTRACT

We always understand intelligence as intellectual or academic potential but this is very narrow and limited approach. To understand full range of abilities or potential that an individual can possess, we should take into account different aptitudes and talents of them such as linguistic, musical, visual-spatial, kinesthetic, interpersonal, or intrapersonal intelligence. This theory is known as “Multiple Intelligence” which advocates that different people have different qualities or intelligences. This article makes us aware of this concept and the utility of their individualized and inherent nature in homoeopathic prescription. It also ascribes important rubrics related to different abilities which help in narrowing down the remedies. As homoeopathy is based on a holistic approach, knowing and understanding this concept, and related rubrics and important remedies will lead us to more efficient or successful treatment.

**Keywords:** *Homoeopathy, Interpersonal intelligence, Intrapersonal intelligence, Kinesthetic ability, Linguistic ability, Multiple intelligence, Visual-spatial intelligence.*

Received: 28/07/2023

Accepted: 07/09/2023

Published: 18/10/2023

**How to cite this article:**

Goyal A. Significance of concept of “Multiple Intelligence” in homoeopathic prescription, KNOW Homoeopathy Journal, 2023; 3(2):79-84, available at <https://www.knowhomoeopathyjournal.com/2023/10/multiple-intelligence-in-homoeopathic-prescription.html>

© 2023 KNOW Homoeopathy Journal

[Know more about Journal's Copyright Policy](#)<https://www.knowhomoeopathyjournal.com/p/copyright-policy.html>**INTRODUCTION**

Intelligence means an ability to learn, understand, or acquire knowledge and apply it in everyday life. What we understand from intelligence is- it is the way we react to our surroundings, we think to solve some problems, it is the ability to make decisions with positive results or outcomes, to adapt to the environment, or to survive in adverse conditions.

When we talk about intelligence, we always think of intellectual potential or judge a person's intelligence by his or her academic performance or more precisely his intellectual ability only but intelligence is more deep, more abstract, and more multidimensional than mere cramming facts and writing them down for exams.

It was theorized that different people have different aptitudes or intelligence in varied aspects. Sometimes one or two aptitudes are more prominent than other abilities. This is what is known as multiple intelligence means intelligence is not a single identity that can be measured by IQ tests alone. It means intelligence has many aspects or aptitudes.

This theory was first outlined by developmental psychologist “Howard Gardener” as Multiple Intelligence in 1983, in his book “Frames of Mind”. According to him, the conventional concept of intelligence is very narrow and restrictive but we understand this more deeply and broadly. The same views are shared by Dr. Pravin Jain, homoeopath, Mumbai, author of Essentials of Paediatrics.

We can justify this through anatomy of brain. There are different areas of brain regulating different aspects of emotionality, intelligence cognitive functions and memory. The cerebral hemispheres, Brainstem consisting of mid-brain, pons and medulla, cerebellum, limbic system, amygdala, hippocampus, thalamus and hypothalamus have their definite functions regarding these.

The most important organ for determining intelligence is Cerebral cortex and it most importantly depends on its surface area. In humans, cerebral cortex is in folds, increasing its surface area as compared to smooth cortex in lower animals. The more folds indicate more ability for cognitive functions, thinking, learning and memory. It is also known as corticalization. That's why, human race is more smart or intelligent than lower organisms. <sup>[1]</sup>

Cerebral cortex is divided into 2 hemispheres and each hemisphere has 4 lobes- frontal, parietal, temporal and occipital. These lobes have various functional areas regarding different aptitudes.

Like for example: <sup>[1]</sup>

**Frontal area** is for thinking, interpretation, planning

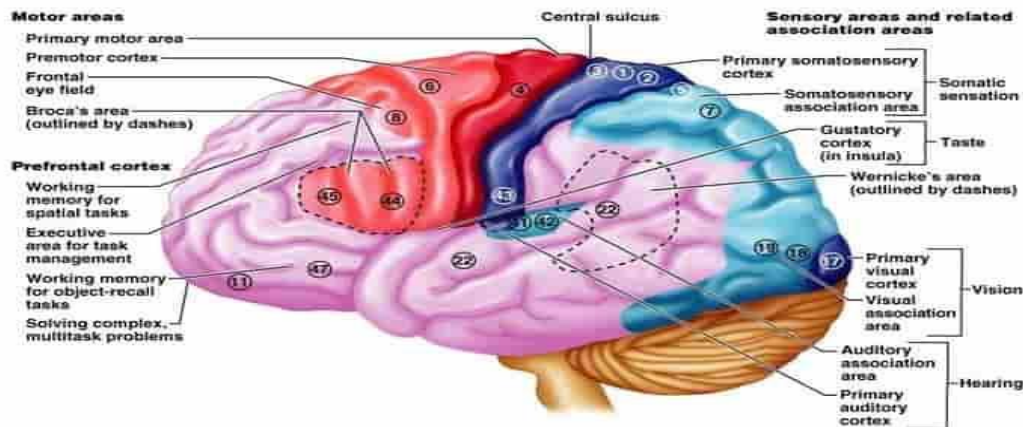
The **parietal area** is for the interpretation of sensory impulses

The **occipital area** is for the processing and interpretation of visual information

The **temporal area** is for processing auditory stimuli and for linguistic function.

**Somatosensory and motor areas-** For processing sensory impulses and coordination of motor movements.

**Association areas-** For higher functions such as planning, strategy making, and understanding.



**Figure 1 : Functional areas of cerebral cortex** [2]

Some people have more intelligence in one area than other areas. This depends on more folding or increased area of that cortex. So, it was given that there are 7 types of intelligence, and 5 out of 7 of them are linked to our sense organs

**Tongue-** Linguistic/verbal intelligence

**Nose-** Logical/mathematical

**Ear-** Music/ rhythmic intelligence

**Eyes-** Visual/spatial intelligence

**Skin-** Kinesthetic/motor intelligence

### SIGNIFICANCE IN HOMOEOPATHIC PRESCRIPTION

Psychology is an indispensable part of homoeopathic case taking and prescription. It takes into consideration the personality of the patient or we can say predominant traits of his/her nature. Homoeopathy also believes in individuality and considers the patient as a whole unit not only diseased parts or mere symptoms so it explores different shades of patient while understanding the intellect of a person. Thus, insight into concept of “Multiple Intelligence” and studying different rubrics attributed to them and awareness of medicines

given under them will help to enhance the efficiency and effectiveness of a homoeopathic physician. Now, we can see different aspects of these intelligence [3, 4]

1) **Linguistic:** People who have more linguistic intelligence- Grasp languages easily, Learn or understand foreign languages easily

More communicative, has more command of vocabulary

They have skill in writing, animating stories, poetries

They enjoy reading and thinking in words

Can express their ideas and thoughts well

Good orators or influencing speakers

Likes and good at word games

### RELATED RUBRICS ARE (VISION SOFTWARE):

**MURPHY, MIND, talks, general, excessive, loquacity: HYOS, LACH, STRAM,**

*AGAR, ARG, AUR, BELL, CAMPH, CANN-I, CIMIC, COCC, CROC, CROT-C, CUPR, IOD, KALI-I, MERC, MUR-AC, NAT-C, OP, PAR, PHOS, PLB, PODO, VERAT*

**MURPHY, MIND, verses, makes poetry:**  
*agar, ant-c, hyos, lach, stram*

**COMPLETE CLASSIC, MIND;**  
**psychological themes; gesticulation,**  
**appearance, verbal expression; speaking,**  
**verbal expression:** ALUMN, ARN, ANT-T,  
BELL, CANN-I, CIMIC, CHIN, CROT-C,  
GELS, HYOS, LACH, MERC, NIT-AC,  
PHOS, PH-AC, PLAT, RHUS-T, STRAM,  
VERAT

**COMPLETE CLASSIC, MIND,**  
**communicative expansive:** *lach, acon, alum,*  
*bar-c, hydrc*

**COMPLETE CLASSIC, MIND, writing,**  
**desire for:** STRAM, chin, gels

**MURPHY, MIND, writing, general talent,**  
**for easier:** op, coca

**CLARKE, MIND, public speakers:** stann

2) **Logical/mathematics intelligence:** People who have logical intelligence

- Are good at mathematics, geometry, arithmetic mathematics, and calculations
- They can link or connect different pieces of information with logic
- They have logical and reasoning ability
- They like detective or mystery games, strategy games like chess etc, good in puzzles
- They are good in finance
- They are very inquisitive and curious and asks questions in everything
- They like to do experiments to search reason and logic in it

**RELATED RUBRICS ARE (VISION SOFTWARE):**

**MURPHY, MIND, mathematics general,**  
**ability for:** calc-sil, cocc, coca, coff, kali-sil,  
lach, nux-v, plb, sil

**COMPLETE CLASSIC, MIND; finance,**  
**aptitude for:** ars, lyc, puls

**MURPHY, MIND, inquisitive behavior:**  
agar, aur, choc, hyos, lach, laur, lyc, merc, puls,  
sep, sulph, verat

**COMPLETE CLASSIC, MIND,**  
**psychological themes, perception,**  
**reasoning, cognition:** ACON, BAR-C, BELL,  
HELL, HYOS, LACH, LYCO, PHOS, PH-AC,  
OP, STRAM, SULPH, VERAT.

3) **Auditory/music intelligence:** People who have this intelligence

- are sensitive to music
- They can easily recognize, understand and grasp music, rhythm
- They can remember music notes even very remotely listened
- They are oversensitive to noise, even to environmental noises which others usually do not notice or even be aware of
- Exaggerated hearing sense
- Express themselves through music and rhythm, thinks in sounds and patterns.

**RELATED RUBRICS ARE (VISION SOFTWARE):**

**COMPLETE CLASSIC, MIND; memory active, music for :** croc, lyc

**COMPLETE CLASSIC, MIND; sensitive, music to :** NAT-C, NUX-V, SEP, *calc, carc, cham, graph, ign, kreos, lyc, nat-m, nat-s, ph-ac, sabin, tab, tarent*

**MURPHY, MIND, verses, makes poetry:**  
*agar, ant-c, hyos, lach, am-c, alco, cann-I, carb-v, chin, coff, lyc, nat-m, staph, stram, thea*

**COMPLETE CLASSIC, MIND,**  
**oversensitive , noise to:** ACON, ALOE, ANG,  
ASAR, AUR, BELL, BOR, BRY, BUFO,  
CHAM, CHIN, COFF, CON, IGN, IP, KALI-  
C, LYC, LYSS, NAT-C, NIT-AC, NUX-V,  
OP, PLAT, PULS, SEP, SIL, TARENT,  
THER, TUB, ZINC

**MURPHY, MIND, hearing, acute hearing:**  
LYSS, ACON, ASAR, BELL, CHIN, CON,

LACH, NAT-C, NUX-V, OP, SIL, TAB, *anac, aur, cann-i, caps, cic, cocc, colch, graph, hep, iod, kali-c, kali-p, kali-s, lyc, nat-ar, nat-m, nat-p, nux-m, ph-ac, phos, plan, puls, sep, spig, stry, sulph, ther, verat*

COMPLETE CLASSIC, MIND, **sing, desires to, involuntarily, hearing a single note sung:** CROC

#### 4) Visual/spatial intelligence

- They think and learn through visual patterns and images
- They are good at painting, coloring
- They have skill in art and craft
- Good in studying maps, flow diagrams and charts

RELATED RUBRICS ARE (VISION SOFTWARE):

MURPHY, MIND; **artistic, general, aptitude:** *carc, sulph*, ambr, chin, euph, nat-c, phos, plat, sil, tub

MURPHY, MIND; **Activity, mental, creative:** *cann-i*

MURPHY, MIND; **Vision, acute, vision:** BELL, COFF, *bufo, chin, con, hell, nux-v, valer*

BOENNINGHAUSEN, VISION, **distinctness, increased:** *HYOS, CON, VALER, canth, nux-v*, carb-an

#### 5) Kinesthetic intelligence

- These people have good fine motor skills
- They are skillful in dance, sports, aerobics and gymnastics
- They have good brain and body coordination
- They are very restless, cannot rest and staying calm is an effort for them
- They learn and express themselves through movements

RELATED RUBRICS ARE (VISION SOFTWARE):

COMPLETE CLASSIC, MIND; **Imitation,**

**mimicry:** LYC, STRAM, bell, cupr, hyos, sars, verat

COMPLETE CLASSIC, MIND; **restlessness, physical:** ARN, ARS, BELL, BRY, CHAM, CHIN, CIMIC, HYOS, KALI-C, LYC, MED, NAT-M, NUX-V, PULS, PLAT, PLB, PULS, SEP, SIL, STAPH, STRAM, SULPH, TARENT, TUB

COMPLETE CLASSIC, MIND; **dance desires to:** BELL, CARC, CROC, STRAM, TARENT, APIS, AGAR, CIC, COCC, HYOS, PLAT

COMPLETE CLASSIC, MIND; **Gen, motion, motions, amel, rapid, running, dancing:** SEP, TARENT, ARS, BROM, BRY, CAUST, FERR, GRAPH, IGN, NIT-AC, STANN, SUL-AC, THLASPI

#### 6) Interpersonal intelligence

- These people have good communication skills
- They tend to understand other's feelings, mood, thought processes, temperaments easily
- They are extroverts, have a large circle of friends, and can initiate conversation easily with strangers.

RELATED RUBRICS ARE (VISION SOFTWARE):

COMPLETE CLASSIC, MIND; **sociability:** agar, alco, lach, nat-c, stann

MURPHY, MIND; **Extroverted:** ARG-N, MED, PHOS, PULS, *carc, lach, nux-v, sulph*  
MURPHY, MIND, **sympathetic, empathy:** CARC, COCC, PHOS, CAUST, NAT-M, PULS, calc-p, cic, dulc, hydrog, ign, lyss, nat-c, nit-ac, nux-v, podo

#### 7) Intrapersonal intelligence

- These people can introspect or reflect on themselves.
- They can understand and can assess their strengths, weaknesses, thought processes

RELATED RUBRICS ARE (VISION SOFTWARE):

MURPHY, MIND; **Introspective:** COCC,

IGN, PULS, NAT-M, ACON, SULPH, *aur, chin, ip, lil-t, sep, nat-c*

**MURPHY, MIND; Meditation:** CARB-AN, *cann-I, hyos, lach, sep, sulph*

**MURPHY, MIND; introverted, behavior:** AUR, IGN, NAT-M, STAPH, *carc, cham, cocc, kali-c, med, merc, mur-ac, puls*

## DISCUSSION AND CONCLUSION

Intelligence is multi-dimensional, it can be in many aspects. So to understand a person's intellect fully and precisely, we should explore various aspects or areas. Thus, we conclude that this theory of Multiple Intelligence allow us to take into account unique mental strengths and abilities of different people. This helps individuals to recognize or perceive their own talents and even their preferred learning styles which enables them to learn more effectively. Simultaneously, these different aptitudes are unique to a particular individual. In homoeopathic case taking they helps us to individualize the case, by taking these peculiar/characteristic symptoms of their personality in totality of a case. These traits are indispensable part of their persona or we can say mental make-up also and thus can help us to narrow down the homoeopathic remedies for constitutional treatment by taking into account specific rubrics for them. Henceforth understanding of this concept, specific rubrics and homoeopathic remedies under these rubrics is very crucial for better analysis of case and homoeopathic treatment.

## REFERENCES

- 1) Stangor C, Walinga J. Our brains control our thoughts, feelings and behaviour. In: Introduction to psychology [e-book]. 1st Canadian ed. Victoria: BCcampus; 2014 Oct 17 [cited 2023 May 28]. Available from: <https://opentextbc.ca/introductiontopsychology/chapter/3-2-our-brains-control-our-thoughts-feelings-and-behavior/>
- 2) Functional areas of cerebral cortex [Internet]. [cited 2023 May 30] www.medicoapps.org. 2020. Available from: <https://medicoapps.org/functional-areas-of-cerebral-cortex-2>
- 3) Cherry K. Gardner's Theory of Multiple Intelligences. Verywell [Internet]. 2023, Mar [cited 2023 Apr 22]. Available from: <https://www.verywellmind.com/gardners-theory-of-multiple-intelligences-2795161#:~:text=Gardner>
- 4) Jain P. Essentials of pediatrics. 3rd ed. Matunga (Mumbai): Nitya publications; 2010. Chap Mind; p.54-60