

KESSELHAUS

FOH Yamaha CL5 + 2x RIO3224D2

PA L-ACOUSTICS KARA 2x8 Front / 2x4 Rear
L-ACOUSTICS SB 18 2x6 downstage
AMPING LA-12X

MONITORING WEDGES L-ACOUSTICS X15 HiQ
BASS FOR DRUMFILL L-ACOUSTICS SB118
SIDEFILL L-ACOUSTICS ARCS Wide/Focus
AMPING LA-12X

SPLIT 48/48 analog passive, 24 return

MICS SHURE BETA 52, BETA 56, BETA 57, BETA 58, BETA 98
SENNHEISER MD 421, MD 441, e 901, e 902, e 904, e 906, e 935
NEUMANN KM 184 RODE NT-5
AUDIX D-2, D-4, D-6

DIs RADIAL JDI passive, J-48 active



FOH MA-LIGHTING GRAND MA 3 FULLSIZE

MOVING LIGHTS AYRTON MISTRAL
AYRTON GHIBLI
STUDIODUE CS-4 ACL
ROBE ROBIN 150
GLP JDC1
GILP x4 BAR 10

PCs ARRI STUDIO 1000

PROFILER ETC SOURCE FOUR

BLINDER 4 LIGHT

SMOKE / HAZE LOOK HAZER
LOOK FOGGER
MDG atME

VIDEO LED Wall 8m x 3,5m
(for rent only!) Laserprojector Panasonic „PTMZ670E“
Screen Stumpfl „Monoblox64 5,08m x 2,94m“
Videomixer Roland V-1HD

RIGGING All 14 Trusses are leveled on the same height:
Upper Stage – Truss: 5,20m
Stage Floor – Truss: 6,40m
Audience Floor – Truss: 7,60m
Gallery „small“ – Truss: 4,50m
Gallery „big“ – Truss: 3,50m



ACHTUNG!

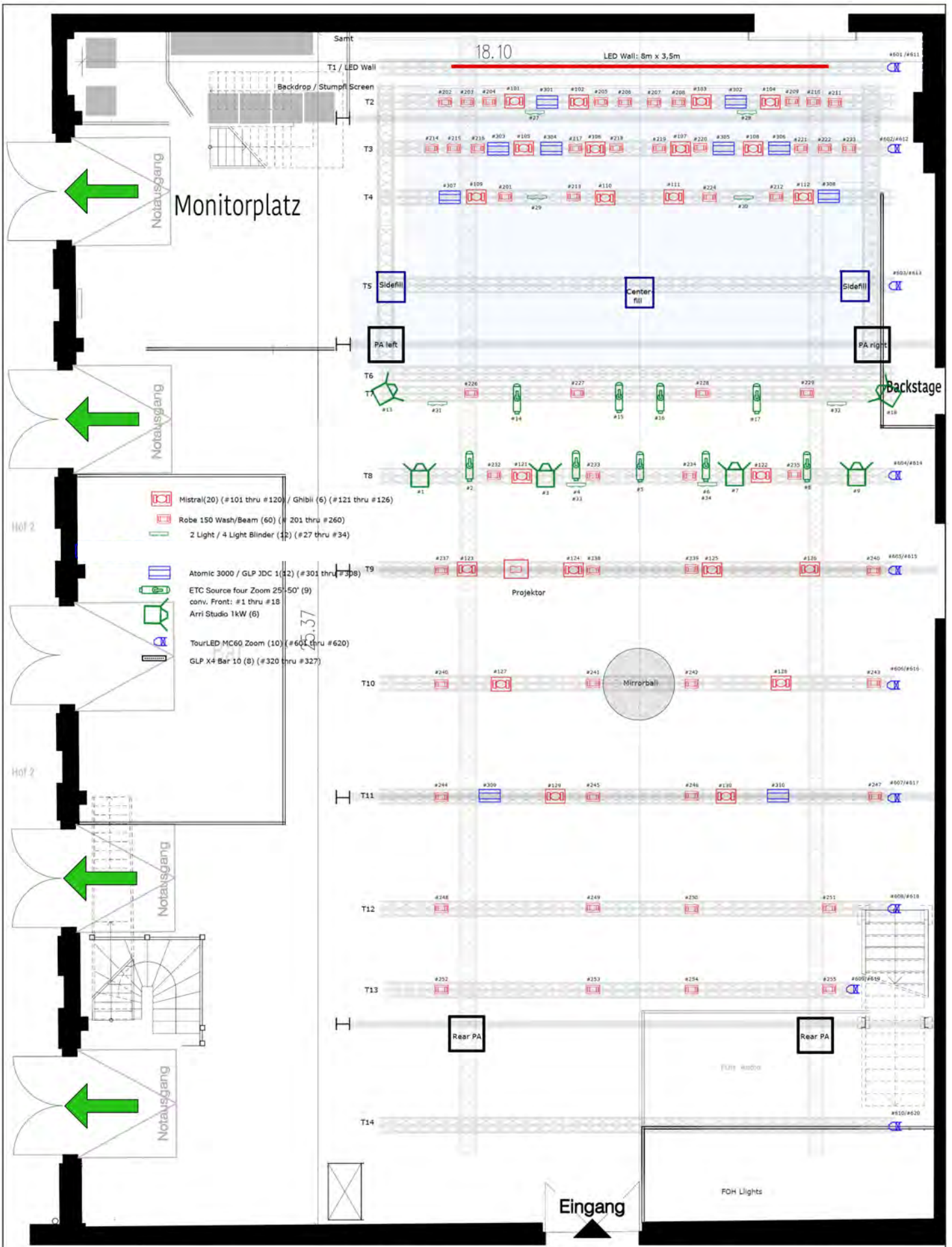
Für alle Produktionen im Kesselhaus und Maschinenhaus gilt der Hausrider. Änderungen müssen in Vorbereitung der Produktion mit der technischen Leitung besprochen werden.

ATTENTION!

The house rider applies to all productions in the Kesselhaus and Maschinenhaus. Changes must be discussed with the technical management in preparation for production.

QUESTIONS?

c/o
Technische Leitung
Steffen Heinrich
heinrich@kesselhaus-berlin.de
+49 176 179 72 396



Venue: Kesselhaus EG in der Kulturbrauerei (Geb. 9.1)	Date: 02.09.2024	Videoequipment for rent only: - LED Wall (8m x 3,5m) - Panasonic PTMZ670E - Stumpf Monoblox 64 (5,08m x 2,94m)	Maximum heights: Upper Stage - Truss = ca. 5,2m Stage Floor - Truss = ca. 6,4m Audience Floor - Truss = ca. 7,6m Gallery "small" - Truss = ca. 4,5m Gallery "big" - Truss = ca. 3,5m	- Every Truss has its own free HAN 16 - Every Truss has its own free CAT 6A - Every Truss can be leveled separately
Company: Consense Gesellschaft zur Förderung von Kultur mbH		Available powersupply at the stage: 1x 63A CEE Red (SR, if LED Wall is not used) 2x 32A CEE Red (SR+5L) 2x 16A CEE Red (SR+5L)	If you need to add something in our truss or rig, you have to ask the technical director before. !!WEIGHT LIMITATIONS!!	For precise measurement, come and visit our Venue. Number of fixtures will vary, in case of maintenance and repair. FOH position is fixed.

18.10

#701 #702 #703 #901 #902 #903 #904 #905 #708 #709 #906 #907 #908 #909 #910 #706 #707 #108

Notausgang

Monitorplatz

Notausgang

Backstage

Robe 150 Wash/Beam (60) (# 201 thru #260)

GLP X4 Bar 10 (8) (#320 thru #327)

25.37

Notausgang

Notausgang

Eingang

FOH

Venue:
Kesselhaus EG
in der Kulturbrauerei (Geb. 9.1)

Date:

Videoequipment for rent only:
Panasonic PTMZ670E
Stumpfl Monoblox 64 (5,08m x 2,94m)

Company:
Consense
Gesellschaft zur Förderung von Kultur
mbH

Available powersupply at the stage:
1x 63A CEE Red (SR)
2x 32A CEE Red (SR+SL)
2x 16A CEE Red (SR+SL)

For precise measurement, come and visit our Venue.
Number of fixtures will vary, in case of maintenance and repair.

0m 1m 2m 3m 5m

Universe 1+2 (Stage Top + Conv. Front)				
Fix ID	Name	FixtureType	Patch	
101	MistraSt 1	4 Mistral Standard (4)	1.001	Univ. A/1
102	MistraSt 2	4 Mistral Standard (4)	1.029	
103	MistraSt 3	4 Mistral Standard (4)	1.057	
104	MistraSt 4	4 Mistral Standard (4)	1.085	
105	MistraSt 5	4 Mistral Standard (4)	1.113	
106	MistraSt 6	4 Mistral Standard (4)	1.141	
107	MistraSt 7	4 Mistral Standard (4)	1.169	
108	MistraSt 8	4 Mistral Standard (4)	1.197	
109	MistraSt 9	4 Mistral Standard (4)	1.225	
110	MistraSt 10	4 Mistral Standard (4)	1.253	
111	MistraSt 11	4 Mistral Standard (4)	1.281	
112	MistraSt 12	4 Mistral Standard (4)	1.309	
201	RLB1502 1	5 Robin LEDBeam 150 Mode 2 (5)	1.337	Univ. B/2
202	RLB1502 2	5 Robin LEDBeam 150 Mode 2 (5)	1.353	
203	RLB1502 3	5 Robin LEDBeam 150 Mode 2 (5)	1.369	
204	RLB1502 4	5 Robin LEDBeam 150 Mode 2 (5)	1.385	
205	RLB1502 5	5 Robin LEDBeam 150 Mode 2 (5)	1.401	
206	RLB1502 6	5 Robin LEDBeam 150 Mode 2 (5)	1.417	
207	RLB1502 7	5 Robin LEDBeam 150 Mode 2 (5)	1.433	
208	RLB1502 8	5 Robin LEDBeam 150 Mode 2 (5)	1.449	
209	RLB1502 9	5 Robin LEDBeam 150 Mode 2 (5)	1.465	
210	RLB1502 10	5 Robin LEDBeam 150 Mode 2 (5)	1.481	
211	RLB1502 11	5 Robin LEDBeam 150 Mode 2 (5)	1.497	
212	RLB1502 12	5 Robin LEDBeam 150 Mode 2 (5)	2.001	
213	RLB1502 13	5 Robin LEDBeam 150 Mode 2 (5)	2.017	
214	RLB1502 14	5 Robin LEDBeam 150 Mode 2 (5)	2.033	
215	RLB1502 15	5 Robin LEDBeam 150 Mode 2 (5)	2.049	
216	RLB1502 16	5 Robin LEDBeam 150 Mode 2 (5)	2.065	
217	RLB1502 17	5 Robin LEDBeam 150 Mode 2 (5)	2.081	
218	RLB1502 18	5 Robin LEDBeam 150 Mode 2 (5)	2.097	
219	RLB1502 19	5 Robin LEDBeam 150 Mode 2 (5)	2.113	
220	RLB1502 20	5 Robin LEDBeam 150 Mode 2 (5)	2.129	
221	RLB1502 21	5 Robin LEDBeam 150 Mode 2 (5)	2.145	
222	RLB1502 22	5 Robin LEDBeam 150 Mode 2 (5)	2.161	
223	RLB1502 23	5 Robin LEDBeam 150 Mode 2 (5)	2.177	
224	RLB1502 24	5 Robin LEDBeam 150 Mode 2 (5)	2.193	
301.1	JDC1Comp 1	7 JDC-1 Compressed (7)	2.209	
302.1	JDC1Comp 2	7 JDC-1 Compressed (7)	2.223	
303.1	JDC1Comp 3	7 JDC-1 Compressed (7)	2.237	
304.1	JDC1Comp 4	7 JDC-1 Compressed (7)	2.251	
305.1	JDC1Comp 5	7 JDC-1 Compressed (7)	2.265	
306.1	JDC1Comp 6	7 JDC-1 Compressed (7)	2.279	
307.1	JDC1Comp 7	7 JDC-1 Compressed (7)	2.293	
308.1	JDC1Comp 8	7 JDC-1 Compressed (7)	2.307	
401.1	CS 4 m3 1	17 CS4Bar final (17)	2.321	
402.1	CS 4 m3 2	17 CS4Bar final (17)	2.341	
1	Arri 1	2 Dimmer 00 (2)	2.361	
2	ETC 1	2 Dimmer 00 (2)	2.362	
3	Arri 2	2 Dimmer 00 (2)	2.363	
4	Etc 2	2 Dimmer 00 (2)	2.364	
5	ETC 3	2 Dimmer 00 (2)	2.365	
6	ETC 4	2 Dimmer 00 (2)	2.366	
7	Arri 3	2 Dimmer 00 (2)	2.367	
8	ETC 5	2 Dimmer 00 (2)	2.368	
9	Arri 4	2 Dimmer 00 (2)	2.369	
10	Spare 1	2 Dimmer 00 (2)	2.370	
11	Spare 2	2 Dimmer 00 (2)	2.371	
12	Spare 3	2 Dimmer 00 (2)	2.372	
13	Gasse L	2 Dimmer 00 (2)	2.373	
14	ETC 6	2 Dimmer 00 (2)	2.374	

Univ. A/B
Univ. 1/2

15	ETC 7	2 Dimmer 00 (2)	2.375
16	ETC 8	2 Dimmer 00 (2)	2.376
17	ETC 9	2 Dimmer 00 (2)	2.377
18	Gasse R	2 Dimmer 00 (2)	2.378
19	Spare 1	2 Dimmer 00 (2)	2.379
20	Spare 2	2 Dimmer 00 (2)	2.380
21	Spare 3	2 Dimmer 00 (2)	2.381
22	Spare 4	2 Dimmer 00 (2)	2.382
23	Spare 5	2 Dimmer 00 (2)	2.383
24	Spare 6	2 Dimmer 00 (2)	2.384
25	Spare 7	2 Dimmer 00 (2)	2.385
26	Spare 8	2 Dimmer 00 (2)	2.386
27	DWE 2 Lights 1	2 Dimmer 00 (2)	2.387
28	DWE 2 Lights 2	2 Dimmer 00 (2)	2.388
29	DWE 2 Lights 3	2 Dimmer 00 (2)	2.389
30	DWE 2 Lights 4	2 Dimmer 00 (2)	2.390
31	DWE 2 Lights 5	2 Dimmer 00 (2)	2.391
32	DWE 2 Lights 6	2 Dimmer 00 (2)	2.392
33	DWE 2 Lights 7	2 Dimmer 00 (2)	2.393
34	DWE 2 Lights 8	2 Dimmer 00 (2)	2.394

Universe 3 (Moving Front)			
Fix ID	Name	FixtureType	Patch
121	GhibliSt 1	11 Ghibli Standard (11)	3.001
122	GhibliSt 2	11 Ghibli Standard (11)	3.039
123	GhibliSt 3	11 Ghibli Standard (11)	3.077
124	GhibliSt 4	11 Ghibli Standard (11)	3.115
125	GhibliSt 5	11 Ghibli Standard (11)	3.153
126	GhibliSt 6	11 Ghibli Standard (11)	3.191
226	RLB1502 2	5 Robin LEDBeam 150 Mode 2 (5)	3.245
227	RLB1502 3	5 Robin LEDBeam 150 Mode 2 (5)	3.261
228	RLB1502 4	5 Robin LEDBeam 150 Mode 2 (5)	3.277
229	RLB1502 5	5 Robin LEDBeam 150 Mode 2 (5)	3.293
232	RLB1502 8	5 Robin LEDBeam 150 Mode 2 (5)	3.341
233	RLB1502 9	5 Robin LEDBeam 150 Mode 2 (5)	3.357
234	RLB1502 10	5 Robin LEDBeam 150 Mode 2 (5)	3.373
235	RLB1502 11	5 Robin LEDBeam 150 Mode 2 (5)	3.389

Universe 4 (Floorset)			
Fix ID	Name	FixtureType	Patch
701	RLB1502 1	5 Robin LEDBeam 150 Mode 2 (5)	4.153
702	RLB1502 2	5 Robin LEDBeam 150 Mode 2 (5)	4.169
703	RLB1502 3	5 Robin LEDBeam 150 Mode 2 (5)	4.185
704	RLB1502 4	5 Robin LEDBeam 150 Mode 2 (5)	4.201
705	RLB1502 5	6 Robin LEDBeam 150 Mode 2 (5)	4.217
706	RLB1502 6	7 Robin LEDBeam 150 Mode 2 (5)	4.233
707	RLB1502 7	8 Robin LEDBeam 150 Mode 2 (5)	4.249
708	RLB1502 8	9 Robin LEDBeam 150 Mode 2 (5)	4.265
35	Dim 1	2 Dimmer 00 (2)/MDG Fan	4.481
36	Dim 2	2 Dimmer 00 (2)	4.482
37	Dim 3	2 Dimmer 00 (2)	4.483
38	Dim 4	2 Dimmer 00 (2)	4.484
39	Dim 5	2 Dimmer 00 (2)	4.485
40	Dim 6	2 Dimmer 00 (2)	4.486
41	Dim 7	2 Dimmer 00 (2)	4.487
42	Dim 8	2 Dimmer 00 (2)	4.488
43	Dim 9	2 Dimmer 00 (2)	4.489
44	Dim 10	2 Dimmer 00 (2)	4.490
45	Dim 11	2 Dimmer 00 (2)	4.491
46	Dim 12	2 Dimmer 00 (2)	4.492
49	Viper	2 Dimmer 00 (2)	4.497
50	ATMe 1	13 MDG ATMe 00 (13)	4.498
51	At3000 4 1	10 Atomic 3000 4 channel (10)	4.501
52	At3000 4 2	10 Atomic 3000 4 channel (10)	4.505
47	Unique21 1	12 Unique 2.1 00 (12)	4.510

Universe 5 (Audience / Party)			
Fix ID	Name	FixtureType	Patch
127	MistraSt 1	4 Mistral Standard (4)	5.001
128	MistraSt 2	4 Mistral Standard (4)	5.029
129	MistraSt 3	4 Mistral Standard (4)	5.057
130	MistraSt 4	4 Mistral Standard (4)	5.085
241	RLB1502 1	5 Robin LEDBeam 150 Mode 2 (5)	5.113
242	RLB1502 2	5 Robin LEDBeam 150 Mode 2 (5)	5.129
243	RLB1502 3	5 Robin LEDBeam 150 Mode 2 (5)	5.145
244	RLB1502 4	5 Robin LEDBeam 150 Mode 2 (5)	5.161
245	RLB1502 5	5 Robin LEDBeam 150 Mode 2 (5)	5.177
246	RLB1502 6	5 Robin LEDBeam 150 Mode 2 (5)	5.193
247	RLB1502 7	5 Robin LEDBeam 150 Mode 2 (5)	5.209
248	RLB1502 8	5 Robin LEDBeam 150 Mode 2 (5)	5.225
249	RLB1502 9	5 Robin LEDBeam 150 Mode 2 (5)	5.241
250	RLB1502 10	5 Robin LEDBeam 150 Mode 2 (5)	5.257
251	RLB1502 11	5 Robin LEDBeam 150 Mode 2 (5)	5.273
252	RLB1502 12	5 Robin LEDBeam 150 Mode 2 (5)	5.289
253	RLB1502 13	5 Robin LEDBeam 150 Mode 2 (5)	5.305
254	RLB1502 14	5 Robin LEDBeam 150 Mode 2 (5)	5.321
255	RLB1502 15	5 Robin LEDBeam 150 Mode 2 (5)	5.337
256	RLB1502 16	5 Robin LEDBeam 150 Mode 2 (5)	5.353
257	RLB1502 17	5 Robin LEDBeam 150 Mode 2 (5)	5.369
258	RLB1502 18	5 Robin LEDBeam 150 Mode 2 (5)	5.385
259	RLB1502 19	5 Robin LEDBeam 150 Mode 2 (5)	5.401
260	RLB1502 20	5 Robin LEDBeam 150 Mode 2 (5)	5.417
309	At3000 4 1	10 Atomic 3000 4 channel (10)	5.433
310	At3000 4 2	10 Atomic 3000 4 channel (10)	5.437

Universe 6 (Deko)			
Fix ID	Name	FixtureType	Patch
611	Dachbinder 1	14 Fusion 12 RGB 00 (14)	6.001
612	Dachbinder 2	14 Fusion 12 RGB 00 (14)	6.004
613	Dachbinder 3	14 Fusion 12 RGB 00 (14)	6.007
614	Dachbinder 4	14 Fusion 12 RGB 00 (14)	6.010
615	Dachbinder 5	14 Fusion 12 RGB 00 (14)	6.013
616	Dachbinder 6	14 Fusion 12 RGB 00 (14)	6.016
617	Dachbinder 7	14 Fusion 12 RGB 00 (14)	6.019
618	Dachbinder 8	14 Fusion 12 RGB 00 (14)	6.022
619	Dachbinder 9	14 Fusion 12 RGB 00 (14)	6.025
620	Dachbinder 10	14 Fusion 12 RGB 00 (14)	6.028
621	Gal Sau UP 1	15 LED Bar 240 RGB 5 channel (15)	6.031
622	Gal Sau UP 2	15 LED Bar 240 RGB 5 channel (15)	6.036
623	Gal Sau UP 3	15 LED Bar 240 RGB 5 channel (15)	6.041
624	Gal Sau UP 4	15 LED Bar 240 RGB 5 channel (15)	6.046
625	Gal Sau DO 1	15 LED Bar 240 RGB 5 channel (15)	6.051
626	Gal Sau DO 2	15 LED Bar 240 RGB 5 channel (15)	6.056
627	Gal Sau DO 3	15 LED Bar 240 RGB 5 channel (15)	6.061
628	Gal Sau DO 4	15 LED Bar 240 RGB 5 channel (15)	6.066
629	Gal Wand 1	15 LED Bar 240 RGB 5 channel (15)	6.071
630	Gal Wand 2	15 LED Bar 240 RGB 5 channel (15)	6.076
631	Gal Wand 3	15 LED Bar 240 RGB 5 channel (15)	6.081
632	Gal Wand 4	15 LED Bar 240 RGB 5 channel (15)	6.086
633	Gal Wand 5	15 LED Bar 240 RGB 5 channel (15)	6.091
634	Gal Raum	15 LED Bar 240 RGB 5 channel (15)	6.096
635	Gal Raum	15 LED Bar 240 RGB 5 channel (15)	6.101
636	Gal Raum	15 LED Bar 240 RGB 5 channel (15)	6.106
637	Gal Raum	15 LED Bar 240 RGB 5 channel (15)	6.111
638	Gal Bar	15 LED Bar 240 RGB 5 channel (15)	6.116
639	Moonflower	2 Dimmer 00 (2)	6.121
640	H20	2 Dimmer 00 (2)	6.122
641	Switch 3	2 Dimmer 00 (2)	6.123
642	Switch 4	2 Dimmer 00 (2)	6.124
643	Fluter 1	2 Dimmer 00 (2)	6.125
644	Fluter 2	2 Dimmer 00 (2)	6.126
645	Fluter 3	2 Dimmer 00 (2)	6.127
646	Fluter 4	2 Dimmer 00 (2)	6.128
647	Tische L	2 Dimmer 00 (2)	6.129
648	Tische R	2 Dimmer 00 (2)	6.130
601	Wand 1	3 TourLED MC60 SSP (3)	6.131
602	Wand 2	3 TourLED MC60 SSP (3)	6.140
603	Wand 3	3 TourLED MC60 SSP (3)	6.149
604	Wand 4	3 TourLED MC60 SSP (3)	6.158
605	Wand 5	3 TourLED MC60 SSP (3)	6.167
606	Wand 6	3 TourLED MC60 SSP (3)	6.176
607	Wand 7	3 TourLED MC60 SSP (3)	6.185
608	Wand 8	3 TourLED MC60 SSP (3)	6.194
609	Wand 9	3 TourLED MC60 SSP (3)	6.203
610	Wand 10	3 TourLED MC60 SSP (3)	6.212
48	Unique21 2	12 Unique 2.1 00 (12)	(-)

Universe 7 (Floorset)			
Fix ID	Name	FixtureType	Patch
901.1	ImX4B1N 1	8 Impression X4 Bar 10 SPIXH (49)	7.001
902.1	ImX4B1N 2	8 Impression X4 Bar 10 SPIXH (49)	7.050
903.1	ImX4B1N 3	8 Impression X4 Bar 10 SPIXH (49)	7.099
904.1	ImX4B1N 4	8 Impression X4 Bar 10 SPIXH (49)	7.148
905.1	ImX4B1N 5	8 Impression X4 Bar 10 SPIXH (49)	7.197
906.1	ImX4B1N 6	8 Impression X4 Bar 10 SPIXH (49)	7.246
907.1	ImX4B1N 7	8 Impression X4 Bar 10 SPIXH (49)	7.295
908.1	ImX4B1N 8	8 Impression X4 Bar 10 SPIXH (49)	7.344
909.1	ImX4B1N 9	8 Impression X4 Bar 10 SPIXH (49)	7.393
910.1	ImX4B1N 10	8 Impression X4 Bar 10 SPIXH (49)	7.442