

KESSELHAUS SOUND

FOH	Yamaha CL5 + 2x RIO3224D2	
PA	L-ACOUSTICS KARA	2x8 Front / 2x4 Rear
	L-ACOUSTICS SB 18	2x6 downstage
	AMPING	LA-12X
MONITORING	WEDGES L-ACOUSTICS X15 HiQ	
	BASS FOR DRUMFILL L-ACOUSTICS SB118	
	SIDEFILL L-ACOUSTICS ARCS Wide/Focus	
	AMPING	LA-12X
SPLIT	48/48 analog passive, 24 return	
MICS	SHURE BETA 52, BETA 56, BETA 57, BETA 58, BETA 98	
	SENNHEISER MD 421, MD 441, e 901, e 902, e 904, e 906, e 935	
	NEUMANN KM 184	
	RODE NT-5	
	AUDIX D-2, D-4, D-6	
DI's	RADIAL JDI passive, J-48 active	

KESSELHAUS LIGHT

FOH	MA-LIGHTING	GRAND MA 3 FULLSIZE
MOVING LIGHTS	AYRTON MISTRAL	
	AYRTON GHIBLI	
	STUDIODUE CS-4 ACL	
	ROBE ROBIN 150	
	GLP JDC1	
	GILP x4 BAR 10	
PC's	ARRI STUDIO 1000	
PROFILER	ETC SOURCE FOUR	
BLINDER	4 LIGHT	
SMOKE / HAZE	LOOK HAZER	
	LOOK FOGGER	
	MDG atME	

Video:

For rent only!

Laserprojector Panasonic „PTMZ670E“

Screen Stumpfl „Monoblox64 5,08m x 2,94m“

Videomixer Roland V-1HD

Rigging:

All 14 Trusses are leveled on the same height:

Upper Stage – Truss: 5,20m

Stage Floor – Truss: 6,40m

Audience Floor – Truss: 7,60m

Gallery „small“ – Truss: 4,50m

Gallery "big" – Truss: 3,50m

ACHTUNG!

Für alle Produktionen im KESSELHAUS und MASCHINENHAUS gilt der Hausrider.

Änderungen müssen in Vorbereitung der Produktion mit der technischen Leitung besprochen werden.

ATTENTION!

The house rider applies to all productions in the KESSELHAUS and MASCHINENHAUS.

Changes must be discussed with the technical management in preparation for production.

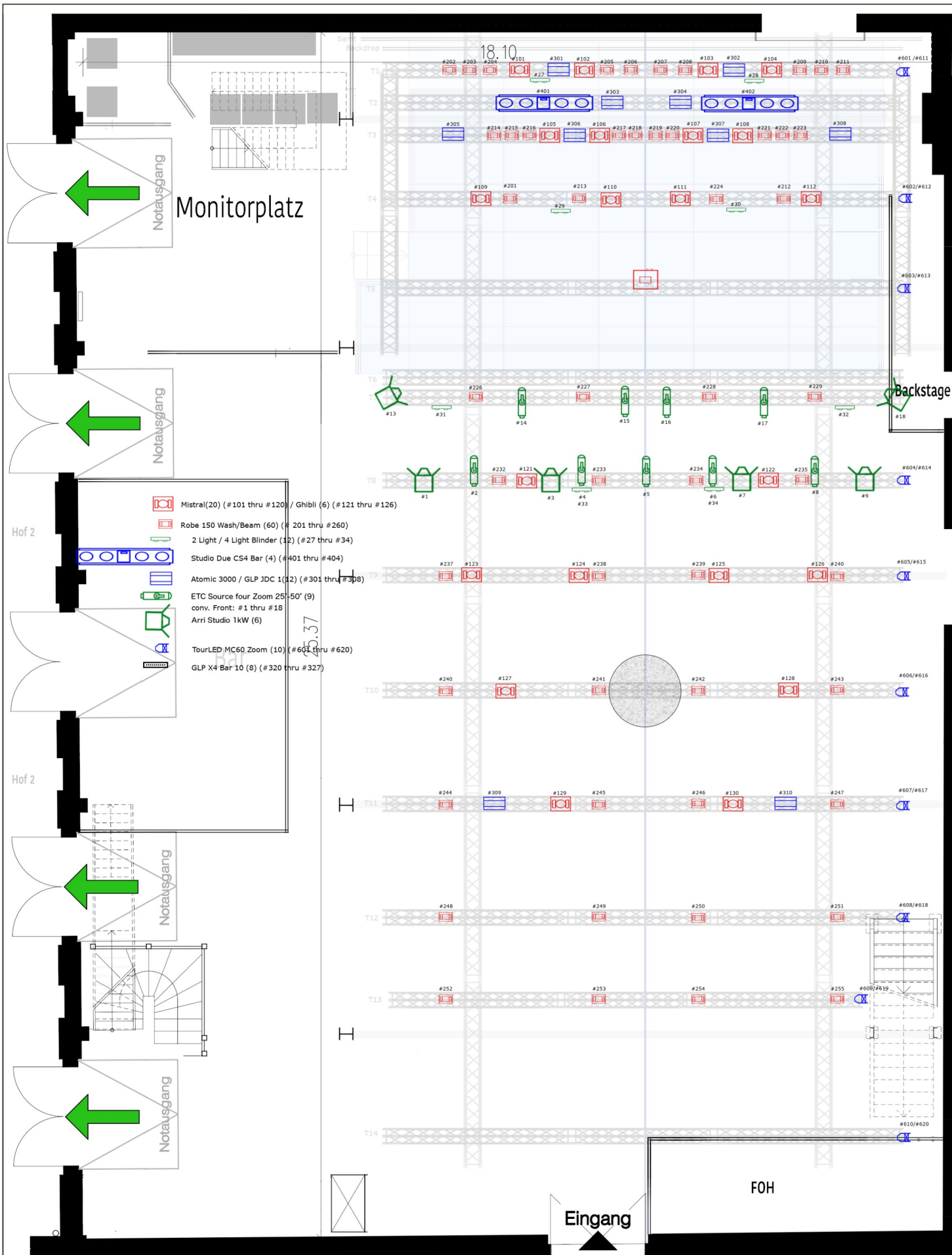
c/o

Technische Leitung

Steffen Heinrich

heinrich@kesselhaus-berlin.de

+49 176 179 72 396



Venue:
Kesselhaus EG
in der Kulturbrauerei (Geb. 9.1)

Company:
Consense
Gesellschaft zur Förderung von Kultur
mbH

Date:
17.09.21

Designer:
Kai Rothkegel

Videoequipment for rent only:
Panasonic PTMZ670E
Stumpff Monoblox 64 (5,08m x 2,94m)

Available powersupply at the stage:
1x 63A CEE Red (SR)
2x 32A CEE Red (SR+SL)
2x 16A CEE Red (SR+SL)

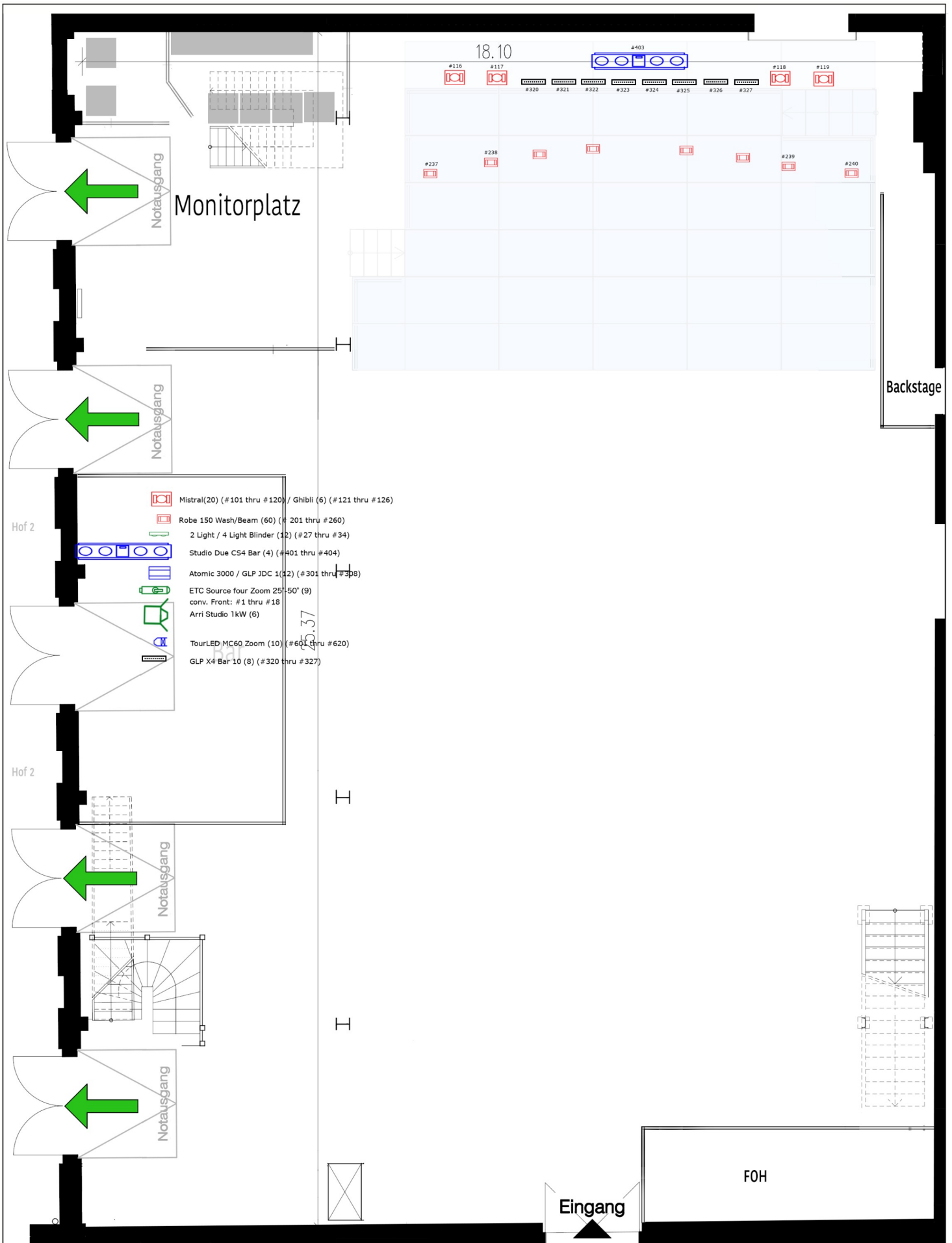
Heights:
Upper Stage - Truss = ca. 5,2m
Stage Floor - Truss = ca. 6,4m
Audience Floor - Truss = ca. 7,6m
Gallery "small" - Truss = ca. 4,5m
Gallery "big" - Truss = ca. 3,5m

If you need to add something in our truss or rig, you have to ask the technical director before.

- Every Truss has its own free HAN 16
- Every Truss has its own free CAT 6A
- Every Truss can be leveled separately

For precise measurement, come and visit our Venue.
Number of fixtures will vary, in case of maintenance and repair.

0m 1m 2m 3m 5m



- Mistral(20) (#101 thru #120) / Ghibli (6) (#121 thru #126)
- Robe 150 Wash/Beam (60) (#201 thru #260)
- 2 Light / 4 Light Blender (12) (#27 thru #34)
- Studio Due CS4 Bar (4) (#401 thru #404)
- Atomic 3000 / GLP JDC 1 (12) (#301 thru #308)
- ETC Source four Zoom 25-50' (9) conv. Front: #1 thru #18
- Arri Studio 1kW (6)
- TourLED MC60 Zoom (10) (#601 thru #620)
- GLP X4 Bar 10 (8) (#320 thru #327)

Venue: Kesselhaus EG in der Kulturbrauerei (Geb. 9.1)	Date: 17.09.21	Videoequipment for rent only: Panasonic PTMZ670E Stumpfl Monoblox 64 (5,08m x 2,94m)	Heights: Upper Stage - Truss = ca. 5,2m Stage Floor - Truss = ca. 6,4m Audience Floor - Truss = ca. 7,6m Gallery "small" - Truss = ca. 4,5m Gallery "big" - Truss = ca. 3,5m	- Every Truss has its own free HAN 16 - Every Truss has its own free CAT 6A - Every Truss can be leveled separately
Company: Consense Gesellschaft zur Förderung von Kultur mbH	Designer: Kai Rothkegel	Available powersupply at the stage: 1x 63A CEE Red (SR) 2x 32A CEE Red (SR+SL) 2x 16A CEE Red (SR+SL)	If you need to add something in our truss or rig, you have to ask the technical director before.	For precise measurement, come and visit our Venue. Number of fixtures will vary, in case of maintenance and repair.



Universe 1+2 (Stage Top + Conv. Front)			
Fix ID	Name	FixtureType	Patch
101	MistraSt 1	4 Mistral Standard (4)	1.001
102	MistraSt 2	4 Mistral Standard (4)	1.029
103	MistraSt 3	4 Mistral Standard (4)	1.057
104	MistraSt 4	4 Mistral Standard (4)	1.085
105	MistraSt 5	4 Mistral Standard (4)	1.113
106	MistraSt 6	4 Mistral Standard (4)	1.141
107	MistraSt 7	4 Mistral Standard (4)	1.169
108	MistraSt 8	4 Mistral Standard (4)	1.197
109	MistraSt 9	4 Mistral Standard (4)	1.225
110	MistraSt 10	4 Mistral Standard (4)	1.253
111	MistraSt 11	4 Mistral Standard (4)	1.281
112	MistraSt 12	4 Mistral Standard (4)	1.309
201	RLB1502 1	5 Robin LEDBeam 150 Mode 2 (5)	1.337
202	RLB1502 2	5 Robin LEDBeam 150 Mode 2 (5)	1.353
203	RLB1502 3	5 Robin LEDBeam 150 Mode 2 (5)	1.369
204	RLB1502 4	5 Robin LEDBeam 150 Mode 2 (5)	1.385
205	RLB1502 5	5 Robin LEDBeam 150 Mode 2 (5)	1.401
206	RLB1502 6	5 Robin LEDBeam 150 Mode 2 (5)	1.417
207	RLB1502 7	5 Robin LEDBeam 150 Mode 2 (5)	1.433
208	RLB1502 8	5 Robin LEDBeam 150 Mode 2 (5)	1.449
209	RLB1502 9	5 Robin LEDBeam 150 Mode 2 (5)	1.465
210	RLB1502 10	5 Robin LEDBeam 150 Mode 2 (5)	1.481
211	RLB1502 11	5 Robin LEDBeam 150 Mode 2 (5)	1.497
212	RLB1502 12	5 Robin LEDBeam 150 Mode 2 (5)	2.001
213	RLB1502 13	5 Robin LEDBeam 150 Mode 2 (5)	2.017
214	RLB1502 14	5 Robin LEDBeam 150 Mode 2 (5)	2.033
215	RLB1502 15	5 Robin LEDBeam 150 Mode 2 (5)	2.049
216	RLB1502 16	5 Robin LEDBeam 150 Mode 2 (5)	2.065
217	RLB1502 17	5 Robin LEDBeam 150 Mode 2 (5)	2.081
218	RLB1502 18	5 Robin LEDBeam 150 Mode 2 (5)	2.097
219	RLB1502 19	5 Robin LEDBeam 150 Mode 2 (5)	2.113
220	RLB1502 20	5 Robin LEDBeam 150 Mode 2 (5)	2.129
221	RLB1502 21	5 Robin LEDBeam 150 Mode 2 (5)	2.145
222	RLB1502 22	5 Robin LEDBeam 150 Mode 2 (5)	2.161
223	RLB1502 23	5 Robin LEDBeam 150 Mode 2 (5)	2.177
224	RLB1502 24	5 Robin LEDBeam 150 Mode 2 (5)	2.193
301.1	JDC1Comp 1	7 JDC-1 Compressed (7)	2.209
302.1	JDC1Comp 2	7 JDC-1 Compressed (7)	2.223
303.1	JDC1Comp 3	7 JDC-1 Compressed (7)	2.237
304.1	JDC1Comp 4	7 JDC-1 Compressed (7)	2.251
305.1	JDC1Comp 5	7 JDC-1 Compressed (7)	2.265
306.1	JDC1Comp 6	7 JDC-1 Compressed (7)	2.279
307.1	JDC1Comp 7	7 JDC-1 Compressed (7)	2.293
308.1	JDC1Comp 8	7 JDC-1 Compressed (7)	2.307
401.1	CS 4 m3 1	17 CS4Bar final (17)	2.321
402.1	CS 4 m3 2	17 CS4Bar final (17)	2.341
1	Arri 1	2 Dimmer 00 (2)	2.361
2	ETC 1	2 Dimmer 00 (2)	2.362
3	Arri 2	2 Dimmer 00 (2)	2.363
4	Etc 2	2 Dimmer 00 (2)	2.364
5	ETC 3	2 Dimmer 00 (2)	2.365
6	ETC 4	2 Dimmer 00 (2)	2.366
7	Arri 3	2 Dimmer 00 (2)	2.367
8	ETC 5	2 Dimmer 00 (2)	2.368
9	Arri 4	2 Dimmer 00 (2)	2.369
10	Spare 1	2 Dimmer 00 (2)	2.370
11	Spare 2	2 Dimmer 00 (2)	2.371
12	Spare 3	2 Dimmer 00 (2)	2.372
13	Gasse L	2 Dimmer 00 (2)	2.373
14	ETC 6	2 Dimmer 00 (2)	2.374
15	ETC 7	2 Dimmer 00 (2)	2.375
16	ETC 8	2 Dimmer 00 (2)	2.376
17	ETC 9	2 Dimmer 00 (2)	2.377

Univ. A/1

Univ. A/B
Univ. 1/2

Univ. B/2

18	Gasse R	2 Dimmer 00 (2)	2.378
19	Spare 1	2 Dimmer 00 (2)	2.379
20	Spare 2	2 Dimmer 00 (2)	2.380
21	Spare 3	2 Dimmer 00 (2)	2.381
22	Spare 4	2 Dimmer 00 (2)	2.382
23	Spare 5	2 Dimmer 00 (2)	2.383
24	Spare 6	2 Dimmer 00 (2)	2.384
25	Spare 7	2 Dimmer 00 (2)	2.385
26	Spare 8	2 Dimmer 00 (2)	2.386
27	DWE 2 Lights 1	2 Dimmer 00 (2)	2.387
28	DWE 2 Lights 2	2 Dimmer 00 (2)	2.388
29	DWE 2 Lights 3	2 Dimmer 00 (2)	2.389
30	DWE 2 Lights 4	2 Dimmer 00 (2)	2.390
31	DWE 2 Lights 5	2 Dimmer 00 (2)	2.391
32	DWE 2 Lights 6	2 Dimmer 00 (2)	2.392
33	DWE 2 Lights 7	2 Dimmer 00 (2)	2.393
34	DWE 2 Lights 8	2 Dimmer 00 (2)	2.394

Universe 3 (Moving Front)			
Fix ID	Name	FixtureType	Patch
121	GhibliSt 1	11 Ghibli Standard (11)	3.001
122	GhibliSt 2	11 Ghibli Standard (11)	3.039
123	GhibliSt 3	11 Ghibli Standard (11)	3.077
124	GhibliSt 4	11 Ghibli Standard (11)	3.115
125	GhibliSt 5	11 Ghibli Standard (11)	3.153
126	GhibliSt 6	11 Ghibli Standard (11)	3.191
226	RLB1502 2	5 Robin LEDBeam 150 Mode 2 (5)	3.245
227	RLB1502 3	5 Robin LEDBeam 150 Mode 2 (5)	3.261
228	RLB1502 4	5 Robin LEDBeam 150 Mode 2 (5)	3.277
229	RLB1502 5	5 Robin LEDBeam 150 Mode 2 (5)	3.293
232	RLB1502 8	5 Robin LEDBeam 150 Mode 2 (5)	3.341
233	RLB1502 9	5 Robin LEDBeam 150 Mode 2 (5)	3.357
234	RLB1502 10	5 Robin LEDBeam 150 Mode 2 (5)	3.373
235	RLB1502 11	5 Robin LEDBeam 150 Mode 2 (5)	3.389

Universe 4 (Floorset)			
Fix ID	Name	FixtureType	Patch
403.1	CS 4 m3 1	17 CS4Bar final (17)	4.001
116	MistraSt 1	4 Mistral Standard (4)	4.041
117	MistraSt 2	4 Mistral Standard (4)	4.069
118	MistraSt 3	4 Mistral Standard (4)	4.097
119	MistraSt 4	4 Mistral Standard (4)	4.125
237	RLB1502 1	5 Robin LEDBeam 150 Mode 2 (5)	4.153
238	RLB1502 2	5 Robin LEDBeam 150 Mode 2 (5)	4.169
239	RLB1502 3	5 Robin LEDBeam 150 Mode 2 (5)	4.185
240	RLB1502 4	5 Robin LEDBeam 150 Mode 2 (5)	4.201
261	RLB1502 5	6 Robin LEDBeam 150 Mode 2 (5)	4.217
262	RLB1502 6	7 Robin LEDBeam 150 Mode 2 (5)	4.233
263	RLB1502 7	8 Robin LEDBeam 150 Mode 2 (5)	4.249
264	RLB1502 8	9 Robin LEDBeam 150 Mode 2 (5)	4.265
35	Dim 1	2 Dimmer 00 (2)/MDG Fan	4.481
36	Dim 2	2 Dimmer 00 (2)	4.482
37	Dim 3	2 Dimmer 00 (2)	4.483
38	Dim 4	2 Dimmer 00 (2)	4.484
39	Dim 5	2 Dimmer 00 (2)	4.485
40	Dim 6	2 Dimmer 00 (2)	4.486
41	Dim 7	2 Dimmer 00 (2)	4.487
42	Dim 8	2 Dimmer 00 (2)	4.488
43	Dim 9	2 Dimmer 00 (2)	4.489
44	Dim 10	2 Dimmer 00 (2)	4.490
45	Dim 11	2 Dimmer 00 (2)	4.491
46	Dim 12	2 Dimmer 00 (2)	4.492
49	Viper	2 Dimmer 00 (2)	4.497
50	ATMe 1	13 MDG ATMe 00 (13)	4.498
51	At3000 4 1	10 Atomic 3000 4 channel (10)	4.501
52	At3000 4 2	10 Atomic 3000 4 channel (10)	4.505
47	Unique21 1	12 Unique 2.1 00 (12)	4.510

Universe 5 (Audience / Party)			
Fix ID	Name	FixtureType	Patch
127	MistraSt 1	4 Mistral Standard (4)	5.001
128	MistraSt 2	4 Mistral Standard (4)	5.029
129	MistraSt 3	4 Mistral Standard (4)	5.057
130	MistraSt 4	4 Mistral Standard (4)	5.085
241	RLB1502 1	5 Robin LEDBeam 150 Mode 2 (5)	5.113
242	RLB1502 2	5 Robin LEDBeam 150 Mode 2 (5)	5.129
243	RLB1502 3	5 Robin LEDBeam 150 Mode 2 (5)	5.145
244	RLB1502 4	5 Robin LEDBeam 150 Mode 2 (5)	5.161
245	RLB1502 5	5 Robin LEDBeam 150 Mode 2 (5)	5.177
246	RLB1502 6	5 Robin LEDBeam 150 Mode 2 (5)	5.193
247	RLB1502 7	5 Robin LEDBeam 150 Mode 2 (5)	5.209
248	RLB1502 8	5 Robin LEDBeam 150 Mode 2 (5)	5.225
249	RLB1502 9	5 Robin LEDBeam 150 Mode 2 (5)	5.241
250	RLB1502 10	5 Robin LEDBeam 150 Mode 2 (5)	5.257
251	RLB1502 11	5 Robin LEDBeam 150 Mode 2 (5)	5.273
252	RLB1502 12	5 Robin LEDBeam 150 Mode 2 (5)	5.289
253	RLB1502 13	5 Robin LEDBeam 150 Mode 2 (5)	5.305
254	RLB1502 14	5 Robin LEDBeam 150 Mode 2 (5)	5.321
255	RLB1502 15	5 Robin LEDBeam 150 Mode 2 (5)	5.337
256	RLB1502 16	5 Robin LEDBeam 150 Mode 2 (5)	5.353
257	RLB1502 17	5 Robin LEDBeam 150 Mode 2 (5)	5.369
258	RLB1502 18	5 Robin LEDBeam 150 Mode 2 (5)	5.385
259	RLB1502 19	5 Robin LEDBeam 150 Mode 2 (5)	5.401
260	RLB1502 20	5 Robin LEDBeam 150 Mode 2 (5)	5.417
309	At3000 4 1	10 Atomic 3000 4 channel (10)	5.433
310	At3000 4 2	10 Atomic 3000 4 channel (10)	5.437

Universe 6 (Deko)			
Fix ID	Name	FixtureType	Patch
611	Dachbinder 1	14 Fusion 12 RGB 00 (14)	6.001
612	Dachbinder 2	14 Fusion 12 RGB 00 (14)	6.004
613	Dachbinder 3	14 Fusion 12 RGB 00 (14)	6.007
614	Dachbinder 4	14 Fusion 12 RGB 00 (14)	6.010
615	Dachbinder 5	14 Fusion 12 RGB 00 (14)	6.013
616	Dachbinder 6	14 Fusion 12 RGB 00 (14)	6.016
617	Dachbinder 7	14 Fusion 12 RGB 00 (14)	6.019
618	Dachbinder 8	14 Fusion 12 RGB 00 (14)	6.022
619	Dachbinder 9	14 Fusion 12 RGB 00 (14)	6.025
620	Dachbinder 10	14 Fusion 12 RGB 00 (14)	6.028
621	Gal Sau UP 1	15 LED Bar 240 RGB 5 channel (15)	6.031
622	Gal Sau UP 2	15 LED Bar 240 RGB 5 channel (15)	6.036
623	Gal Sau UP 3	15 LED Bar 240 RGB 5 channel (15)	6.041
624	Gal Sau UP 4	15 LED Bar 240 RGB 5 channel (15)	6.046
625	Gal Sau DO 1	15 LED Bar 240 RGB 5 channel (15)	6.051
626	Gal Sau DO 2	15 LED Bar 240 RGB 5 channel (15)	6.056
627	Gal Sau DO 3	15 LED Bar 240 RGB 5 channel (15)	6.061
628	Gal Sau DO 4	15 LED Bar 240 RGB 5 channel (15)	6.066
629	Gal Wand 1	15 LED Bar 240 RGB 5 channel (15)	6.071
630	Gal Wand 2	15 LED Bar 240 RGB 5 channel (15)	6.076
631	Gal Wand 3	15 LED Bar 240 RGB 5 channel (15)	6.081
632	Gal Wand 4	15 LED Bar 240 RGB 5 channel (15)	6.086
633	Gal Wand 5	15 LED Bar 240 RGB 5 channel (15)	6.091
634	Gal Raum	15 LED Bar 240 RGB 5 channel (15)	6.096
635	Gal Raum	15 LED Bar 240 RGB 5 channel (15)	6.101
636	Gal Raum	15 LED Bar 240 RGB 5 channel (15)	6.106
637	Gal Raum	15 LED Bar 240 RGB 5 channel (15)	6.111
638	Gal Bar	15 LED Bar 240 RGB 5 channel (15)	6.116
639	Moonflower	2 Dimmer 00 (2)	6.121
640	H20	2 Dimmer 00 (2)	6.122
641	Switch 3	2 Dimmer 00 (2)	6.123
642	Switch 4	2 Dimmer 00 (2)	6.124
643	Fluter 1	2 Dimmer 00 (2)	6.125
644	Fluter 2	2 Dimmer 00 (2)	6.126
645	Fluter 3	2 Dimmer 00 (2)	6.127
646	Fluter 4	2 Dimmer 00 (2)	6.128
647	Tische L	2 Dimmer 00 (2)	6.129
648	Tische R	2 Dimmer 00 (2)	6.130
601	Wand 1	3 TourLED MC60 SSP (3)	6.131
602	Wand 2	3 TourLED MC60 SSP (3)	6.140
603	Wand 3	3 TourLED MC60 SSP (3)	6.149
604	Wand 4	3 TourLED MC60 SSP (3)	6.158
605	Wand 5	3 TourLED MC60 SSP (3)	6.167
606	Wand 6	3 TourLED MC60 SSP (3)	6.176
607	Wand 7	3 TourLED MC60 SSP (3)	6.185
608	Wand 8	3 TourLED MC60 SSP (3)	6.194
609	Wand 9	3 TourLED MC60 SSP (3)	6.203
610	Wand 10	3 TourLED MC60 SSP (3)	6.212
48	Unique21 2	12 Unique 2.1 00 (12)	(-)

Universe 7 (Floorset)			
Fix ID	Name	FixtureType	Patch
320.1	ImX4B1N 1	8 Impression X4 Bar 10 Normal (8)	7.201
321.1	ImX4B1N 2	8 Impression X4 Bar 10 Normal (8)	7.234
322.1	ImX4B1N 3	8 Impression X4 Bar 10 Normal (8)	7.267
323.1	ImX4B1N 4	8 Impression X4 Bar 10 Normal (8)	7.300
324.1	ImX4B1N 5	8 Impression X4 Bar 10 Normal (8)	7.333
325.1	ImX4B1N 6	8 Impression X4 Bar 10 Normal (8)	7.366
326.1	ImX4B1N 7	8 Impression X4 Bar 10 Normal (8)	7.399
327.1	ImX4B1N 8	8 Impression X4 Bar 10 Normal (8)	7.432
328.1	ImX4B1N 9	9 Impression X4 Bar 10 Normal (8)	7.001
329.1	ImX4B1N 10	10 Impression X4 Bar 10 Normal (8)	7.034