

HAYHILLGALLERY

MASTER WORKS AND CONTEMPORARY ART



Walera Martynchik



Since 1990 Walera Martynchik lives in London after escaping the Soviet Union when the iron curtain had fallen.

Originally from Belarus he graduated in 1972 from the State Academy of Fine Arts in Minsk and soon after Walera revolted against compulsory Social Realism. For 20 years he secretly worked on developing his own artistic style despite it being prohibited. He has since become a well known figure in the Soviet Underground movement.

Belarus has a special place in the history of visual Art. Mark Chagall was born in Vitebsk and Kazimir Malevich, the father of Russian Constructivism, taught his theories there. Walera's artistic style was formed from these inspirations in 70s. His other catalysts were: the theories of complexity; some of the very first achievements of digital Art and the provocation of the composer Stravinsky's drawings. In his drawings Stravinsky demonstrated how music can be visualised graphically. The interconnection of music and geometry it is the key to understanding Walera's Art.

Walera has exhibited extensively since. He has had solo shows in London, Paris, Belgium and in many other countries. For the last 3 years he was working on portraits of classical music composers in an ongoing project-commission for a collector in Singapore. In January Walera took part in the Singaporean Art fair "Artery" In which his light sculpture installation was the centre piece. Walera's works can be found in collections around the globe from Australia to Europe, USA and in Singapore.

RECONSTRUCTION OF REALITY

Paintings (Oil on Canvas)



Dynamic Beginning
(Babylon)
Oil on canvas
220 x 200 cm, 2013



BIG BANG Reconstruction (Diptych)
Oil on canvas
220 x 200 cm each, 2010



Dialogue (Quantum Dialogue)
Oil on canvas
200 x 220 cm
2018



Angels With Coloured Wings
Oil on canvas
65 x 50 cm each, 2013



Purple Sunset
Oil on canvas
180 x 100 cm, 2010



Byzantine Construction
Oil on canvas
150 x 120 cm, 2013



Botanic Madonna
Oil on canvas
150 x 120 cm, 2012



Geisha Reconstruction
Oil on canvas
100 x 65 cm, 2020



Lennon Reconstruction
Oil on canvas
150 x 120 cm, 2019



Harvest Reconstruction 1
Oil on canvas
120 cm diameter, 2012



Cherry Picker, Harvest
Series
Oil on canvas
120 cm diameter, 2020



Harvest Reconstruction 2
Oil on canvas
120 cm diameter, 2012



War Of Roses 1
Oil on canvas
50 x 50 cm each
2018









War Of Roses 2
Oil on canvas
100 x 100 cm, 2018



Anatomy Of Love 1
Oil on canvas
140 x 160 cm, 2019

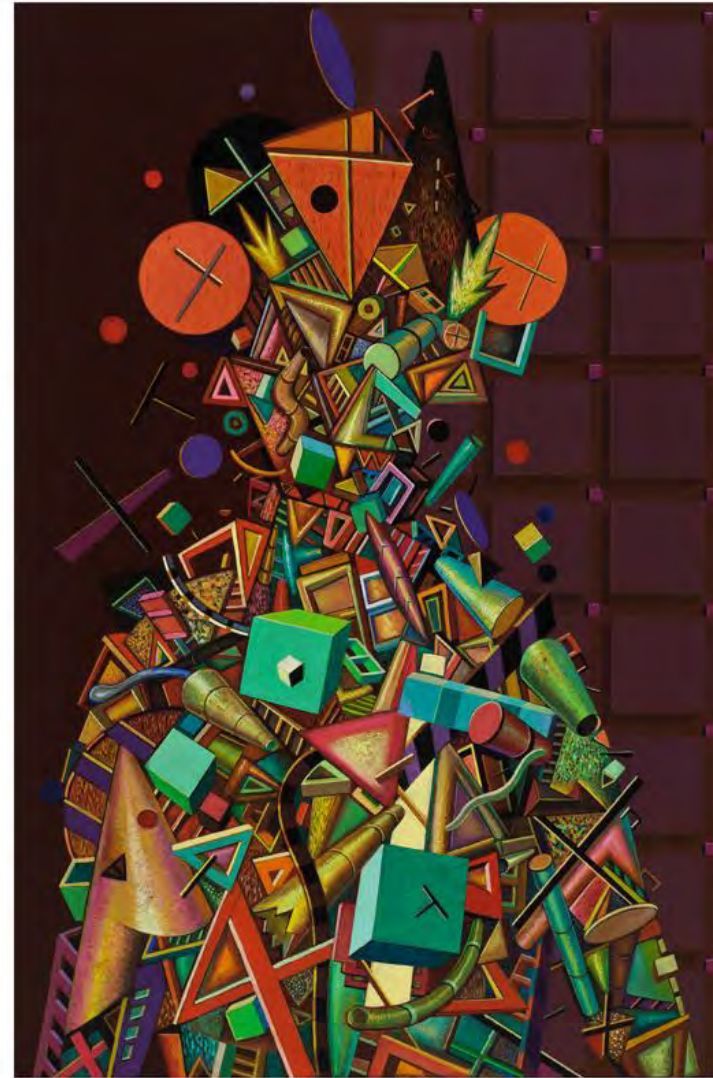
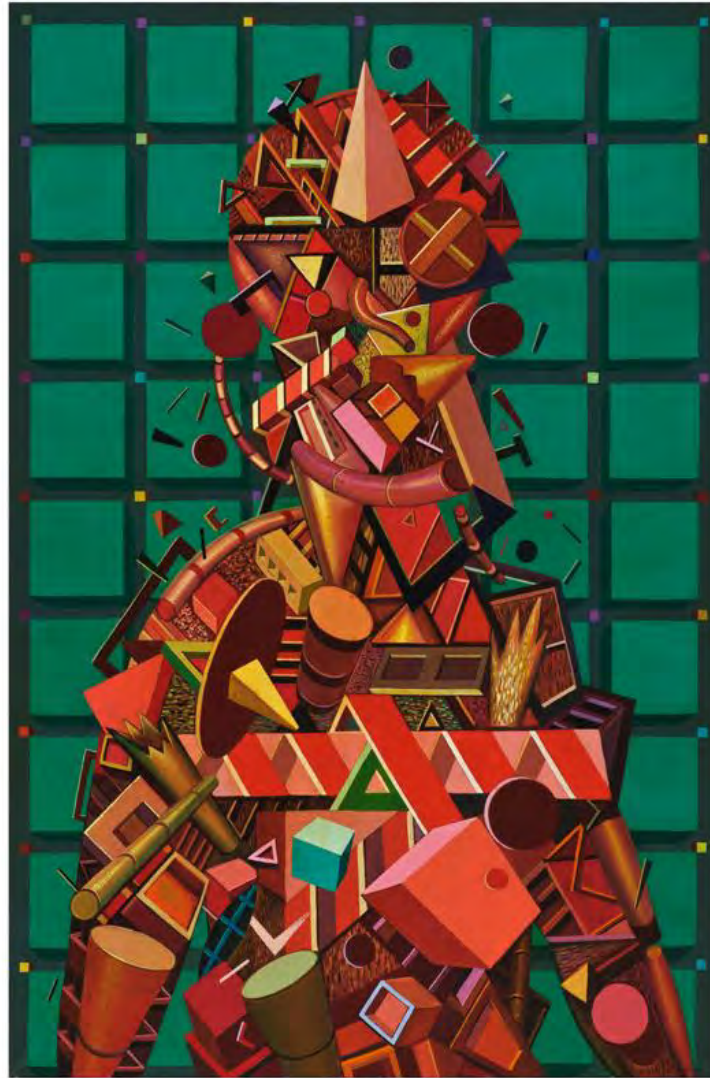


Anatomy Of Love 2
Oil on canvas
140 x 160 cm, 2019





Tribal Reconstruction 2
Oil on canvas
30 x 30 cm each
2020



Wise Man, Tribal Series (Triptych)
Oil on canvas
150 x 120 cm each
2012



Tribal Reconstruction 1 (Triptych)
Oil on canvas
25 x 25 cm each
2020



Punishment Of
Angels
Oil on canvas
80 x 100 cm
2012



Silence II
Oil on canvas
102 x 76 cm,
2014



Crossing Border
Oil on canvas
60 x 200 cm
2011

CELESTIAL OBJECTS (past)

Sculptures (Fibreglass, Copper Finish, Patina)





Celestial Objects
Music Of Spheres
Violin
Fibreglass, copper plated,
patina
50 cm height

















Prokofiev Reconstruction
Fibreglass, copper plated,
patina
70 cm height, 2017



Found Objects
Sphinx
Fibreglass, copper finish, patina
100 cm height



Found Objects
Centaur
Fibreglass, copper plated,
patina
40 cm height, 2020



Celestial Objects (Small)
Fibreglass, copper plated,
patina
50 cm height, 2019











Celestial
Object
(Large)
Fibreglass,
copper
plated,
patina
70 cm height,
2018

CELESTIAL OBJECTS (future)

Coloured Sculptures (Fibreglass, Acrylic Paints, Varnish)



Celestial Objects Project (Objects From Future)
Fibreglass, acrylic paints, varnish



Red Object
Fibreglass, acrylic paints, varnish, 50 cm, 2018





Jolly Spirit 1
Fibreglass, acrylic paints,
varnish
50 cm, 2020



Jolly Spirit 2
Fibreglass,
acrylic
paints,
varnish
50 cm, 2020

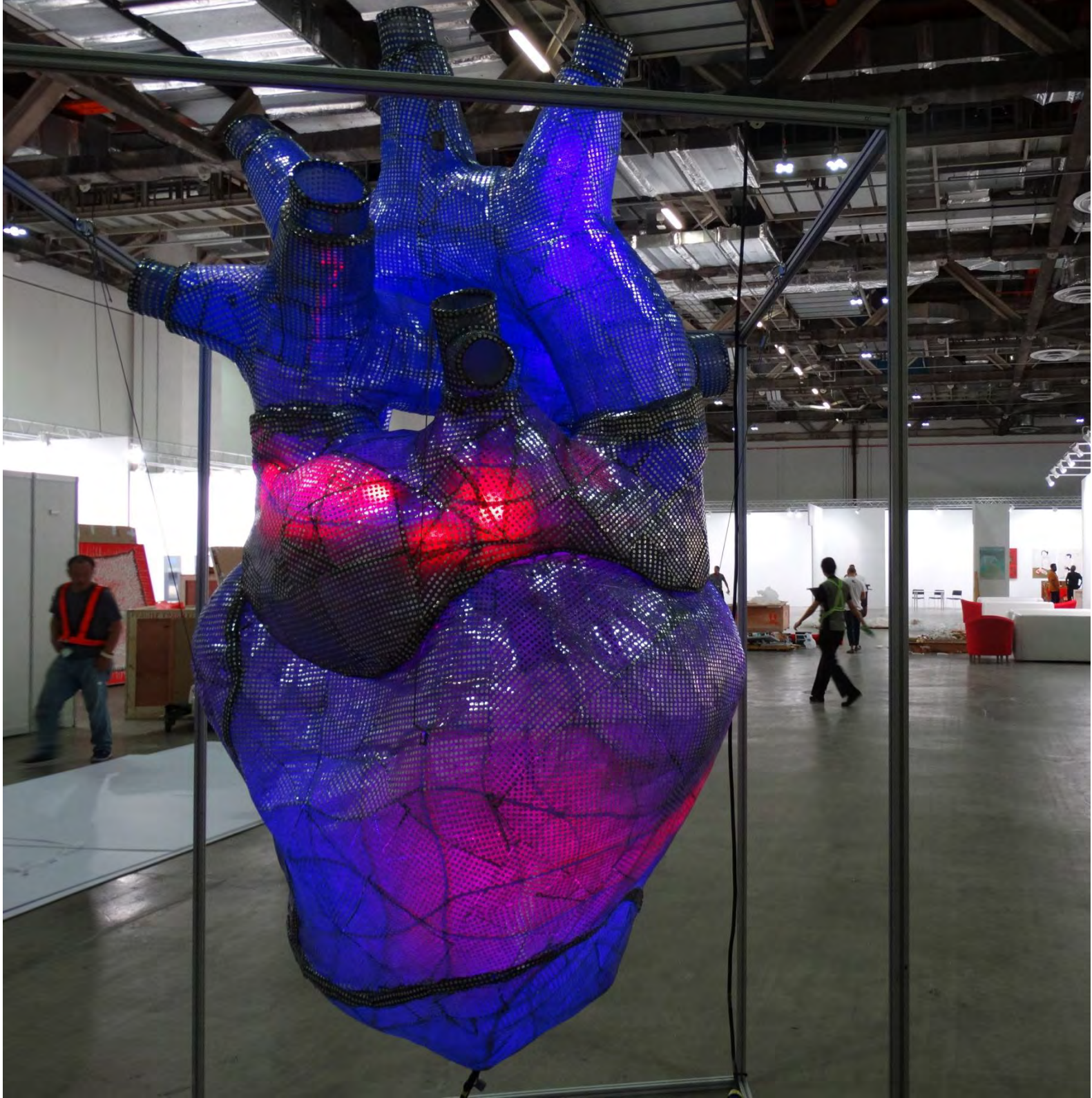
ANATOMY OF LOVE

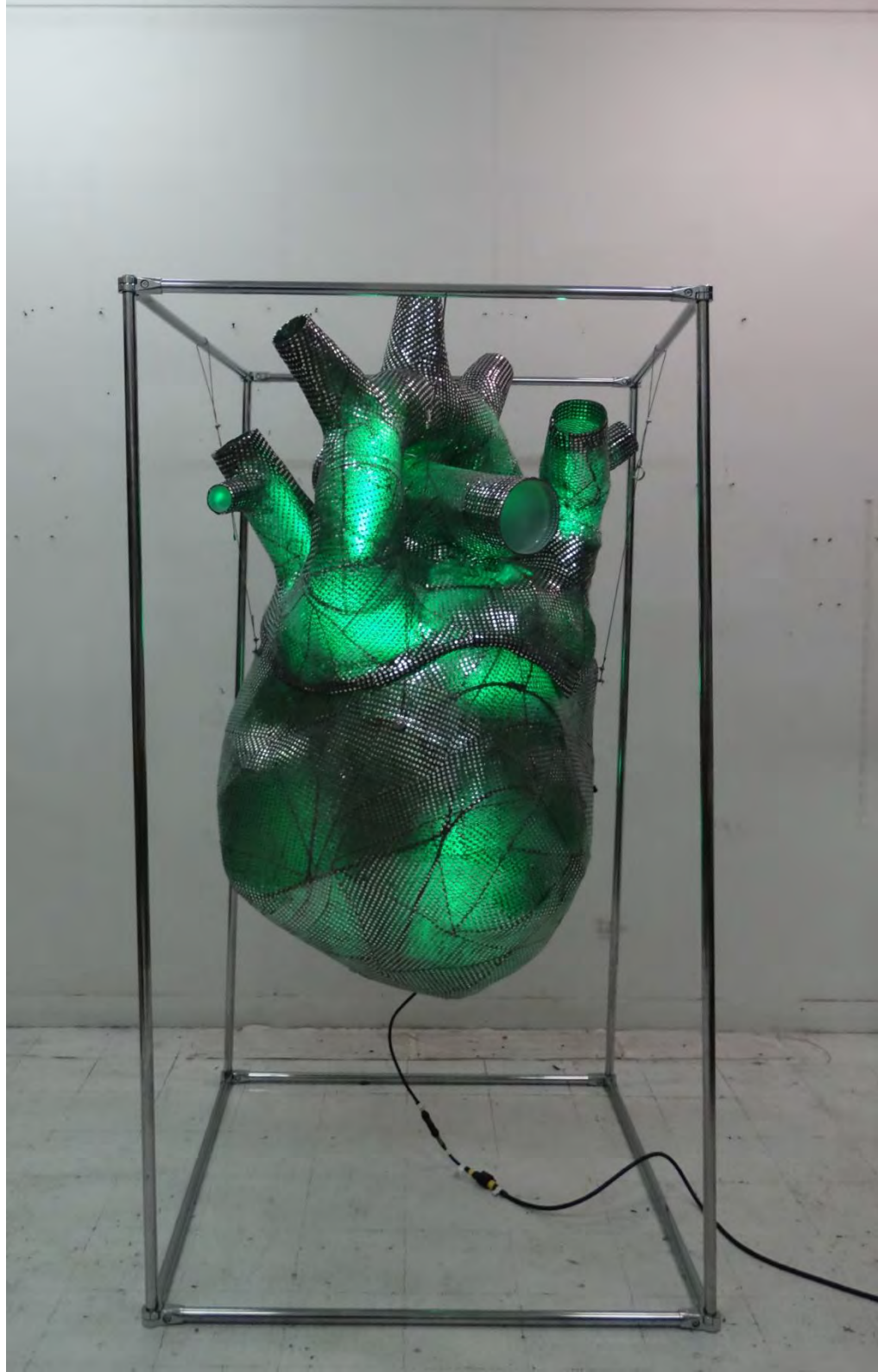
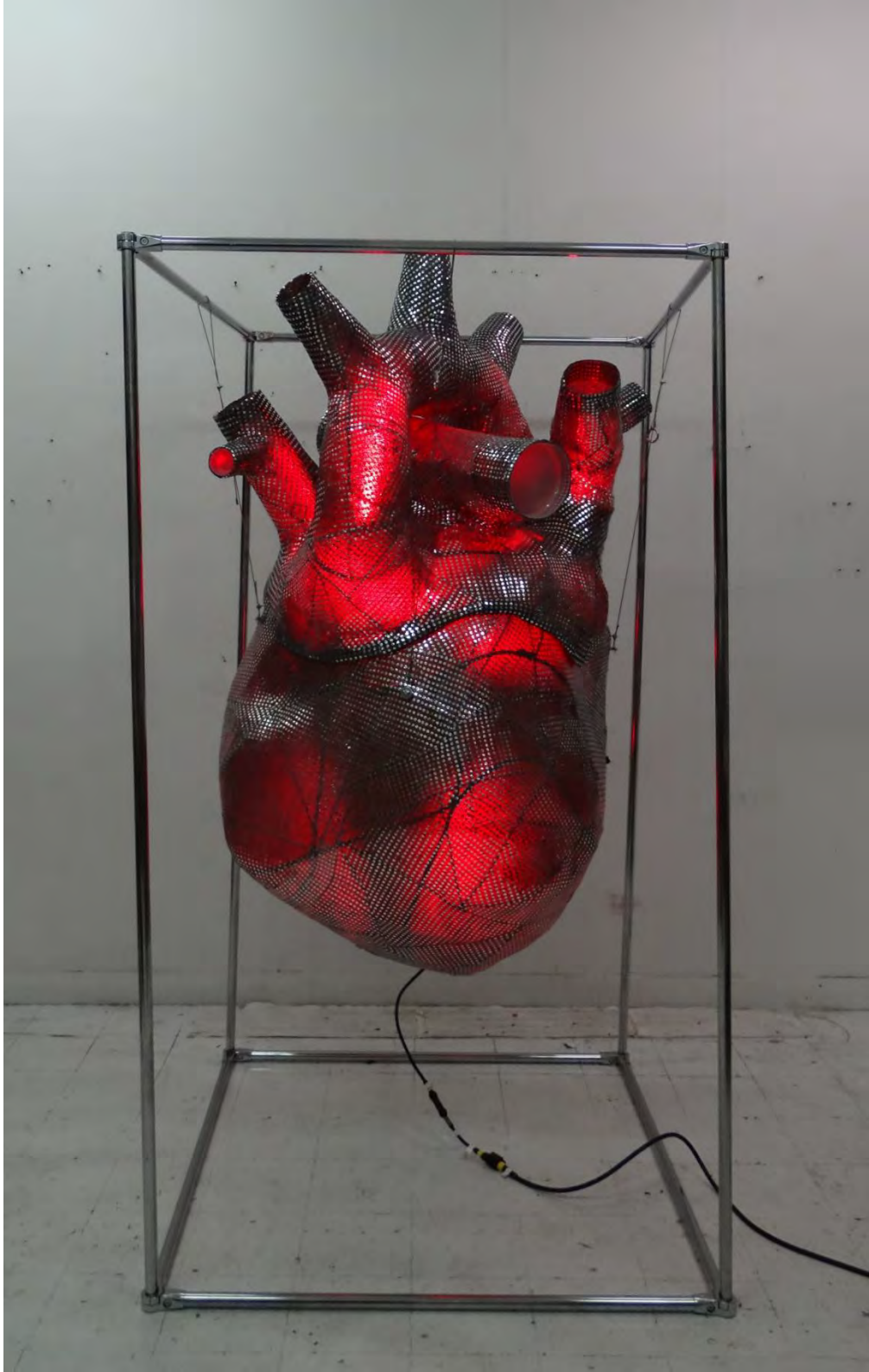
Light Sculptures (Fibreglass, Metal Mesh, LED Units)

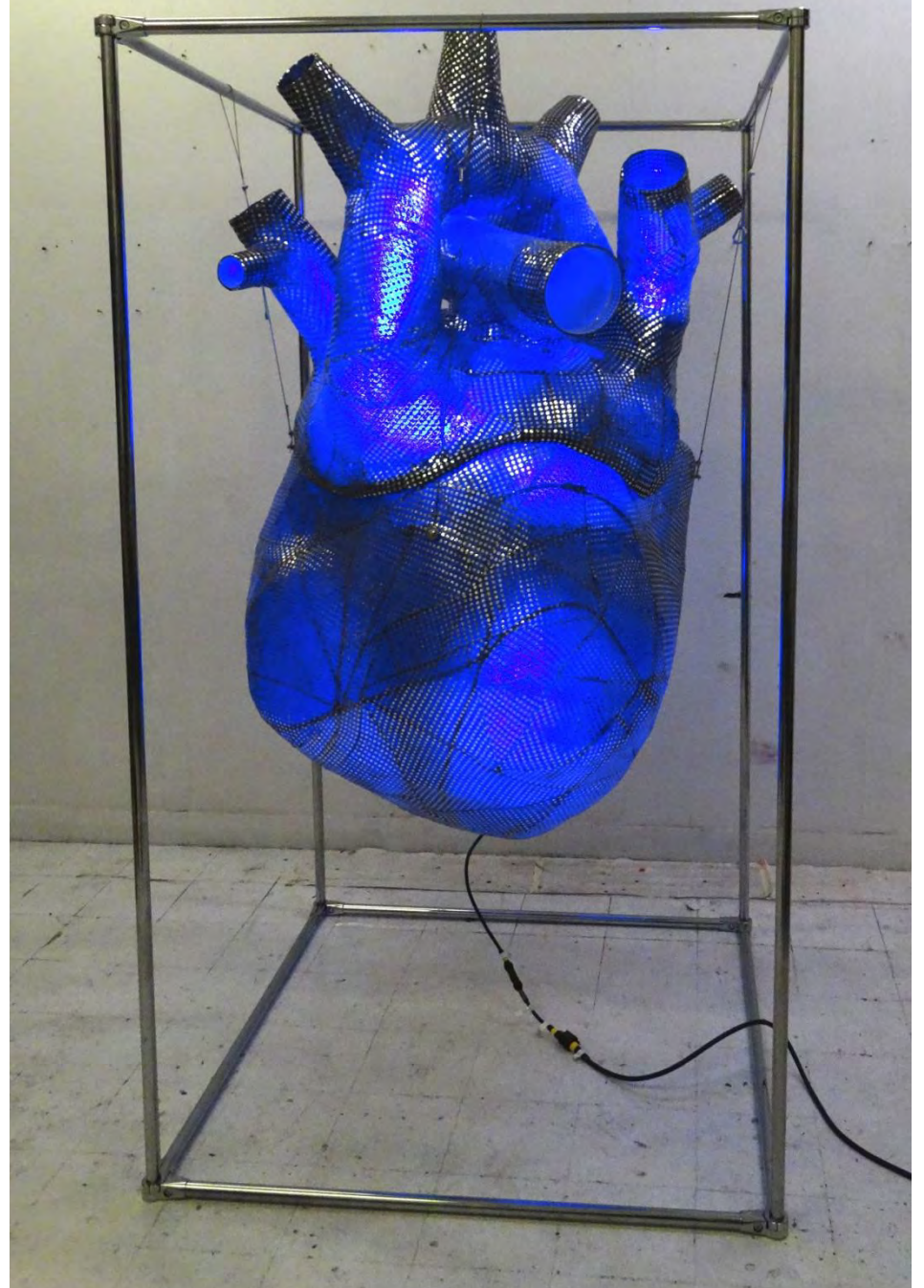




Heart Reconstruction
Fibreglass, metal mesh,
metallic fabric, RGB LED
lighting, 2020
Large – 170 cm
Small – 100 cm









MISTERIUM COSMOGRAPHICUM

Light Installations (Fibreglass, Metal Mesh, LED Units)





Misterium Cosmographicum
Sculptural Light Installation
Fibreglass, metal mesh, metallic
fabric, RGB LED lighting
350 cm height, 2020

HAYHILLGALLERY

MASTER WORKS AND CONTEMPORARY ART

www.hayhill.com
info@hayhill.com
+44 (0) 78 0284 7571