

Romeo & Juliet

Lighting Script Treatment

Introduction:

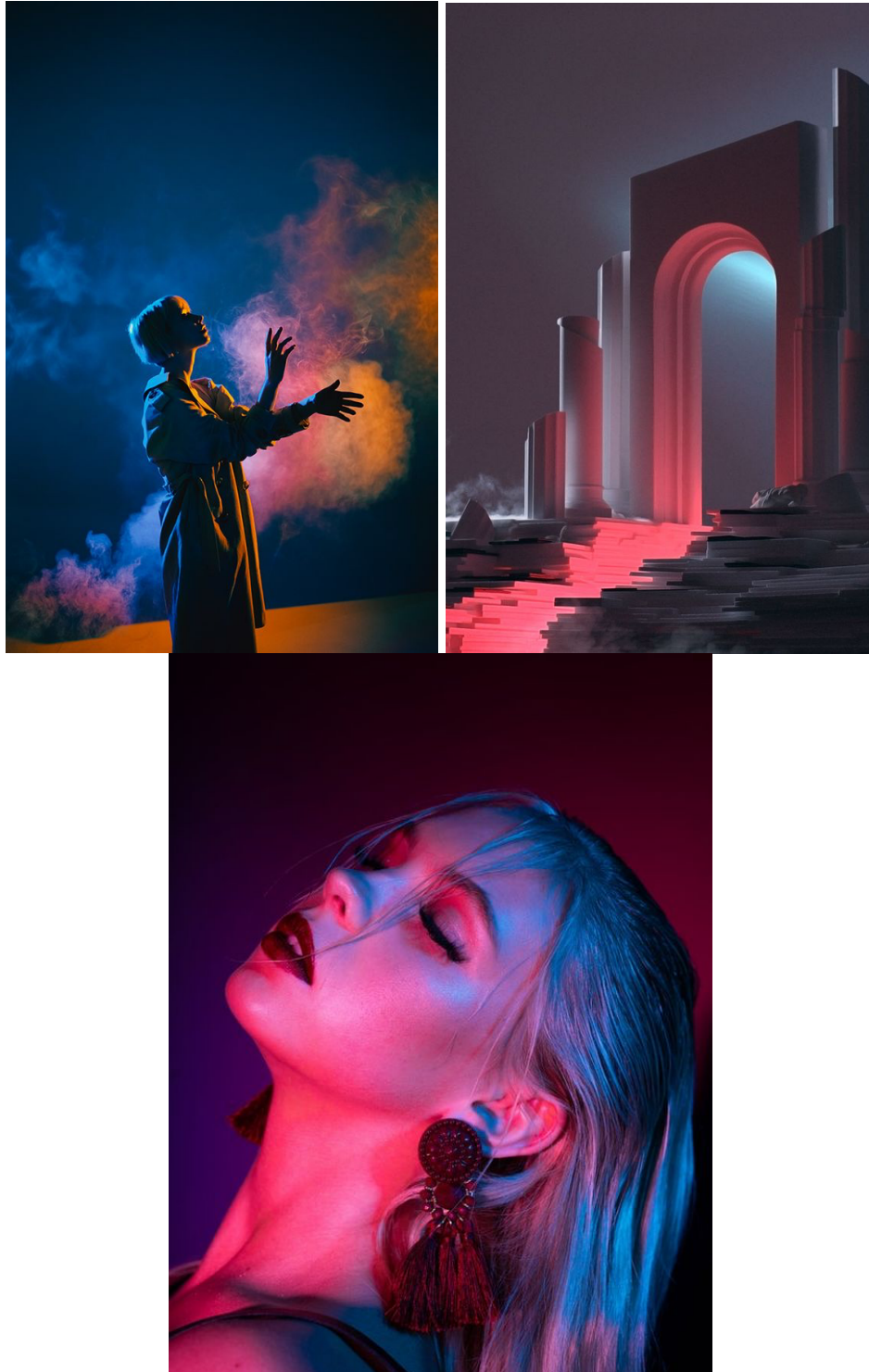
The following is a Script Treatment for UC Irvine's Drama Department's production of *Romeo & Juliet* by William Shakespeare. This document will provide the reader with information on my initial design ideas and lighting concepts for each scene/movement within the script. Images used as research and inspiration are included throughout script treatment to help stimulate design concepts and ideas about major concepts within the play. Please note that quotes from the script are italicized. I have created this document early on in the design process to elicit reactions from our team. I welcome all questions and comments.



Locations:

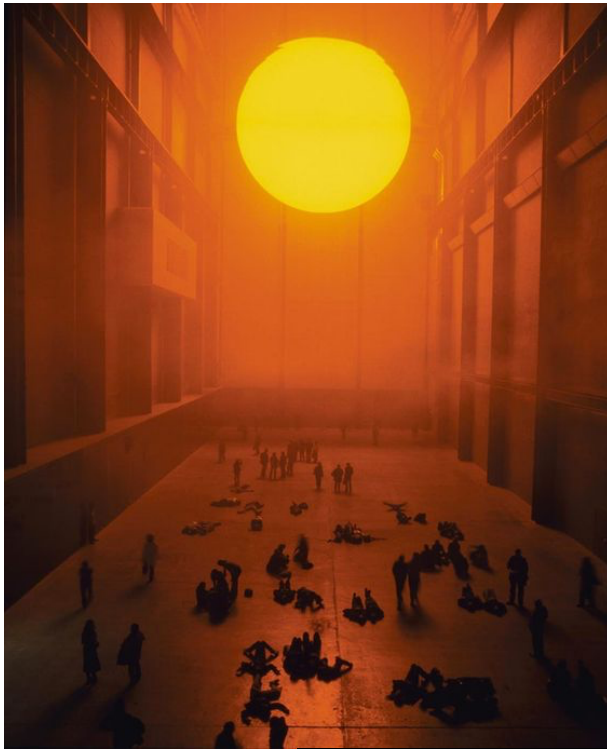
Prologue ACT I/ACT II

Limitless, Omniscient, Liminal



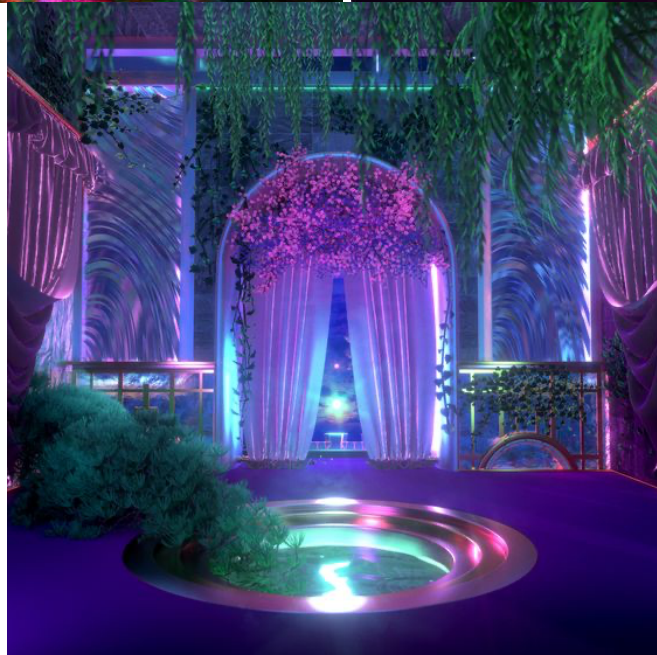
Verona

Sweltering, Aggressive, Exposed



Capulet's House

Grandiose, Boisterous, Powerful



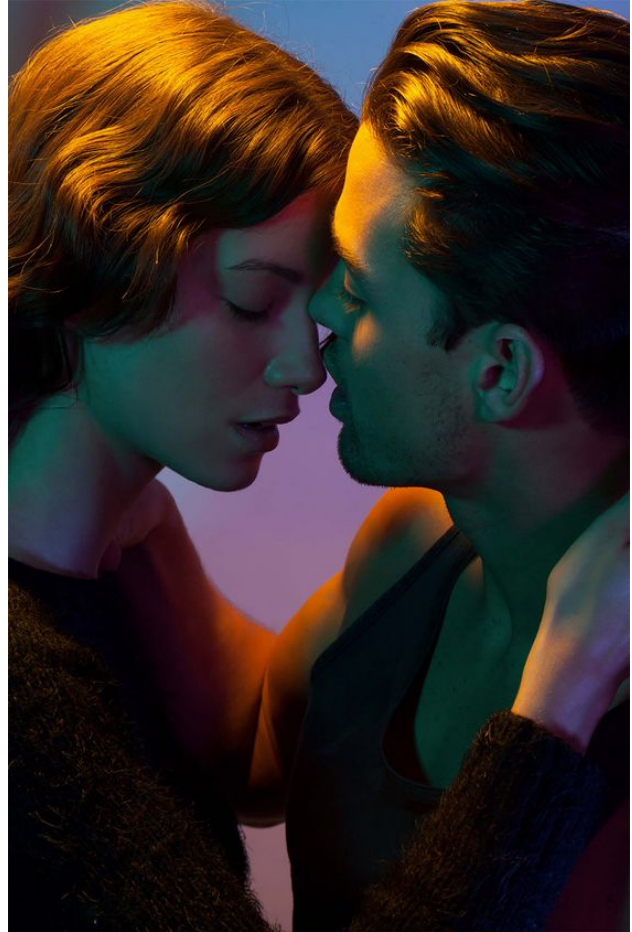
Juliet's Room

Safe haven, Feminine, Rebellious



The Orchard

Hopeful, Passionate, A Barrier

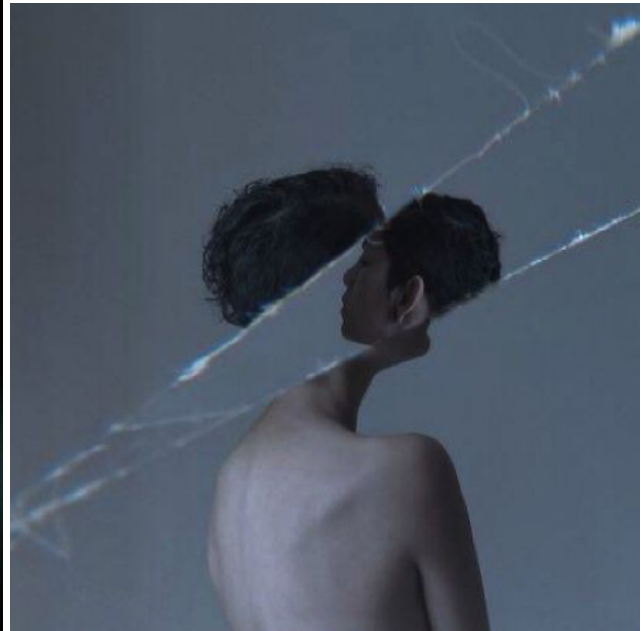
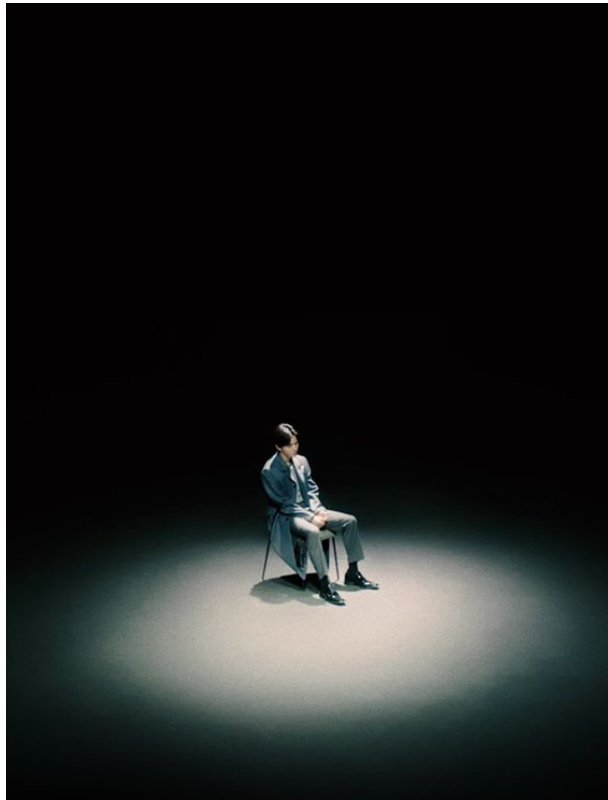


Friar Laurence Cell
Sanctuary, Private, Peaceful



Mantua

Displaced, Lost, Isolated



Capulet tomb

Embellished, Chaotic, Heart Wrenching

