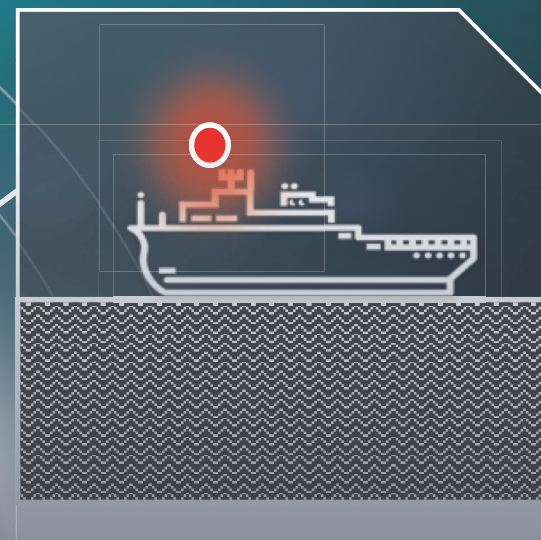


Preventing wide spread cyber attacks at sea

Itai Sela
Naval Dome's CEO



if someone can breach a security
facility 8 floors underground then
someone can breach a vessel at sea

Our Managing Partners



Asaf Shefi
CTO

Captain (Ret.), Nuclear-Engineer, former head of the Israeli Naval C4 and Cyber Defense Unit.



Itai Sela
CEO

Commander (ret.), Israeli Navy, Missile Ship Commander



Yohai Bar Zakay
Business Development

Colonel (Ret.), former Deputy Commander of the IDF's Cyber Intelligence Unit (8200)



| Institute Cyber Attack Exclusion Clause – CI . 380

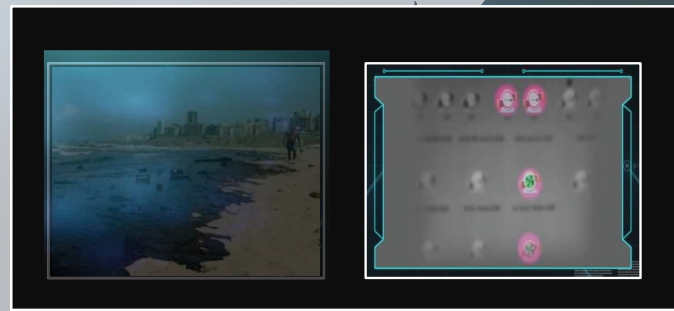
10/11/200

1. Subject only to clause 1.2 below, in no case shall this insurance cover loss damage liability or expense directly or indirectly caused by or contributed to by or arising from the use or operation, as a means for inflicting harm, of any computer, computer system, computer software programme, malicious code, computer virus or process or any other electronic system.
2. Where this clause is endorsed on policies covering risks of war, civil war, revolution, rebellion, insurrection, or civil strife arising therefrom, or any hostile act by or against a belligerent power, or terrorism or any person acting from a political motive, Clause 1.1 shall not operate to exclude losses (which would otherwise be covered) arising from the use of any computer, computer system or computer software programme or any other electronic system in the launch and/or guidance system and/or firing mechanism of any weapon or missile.



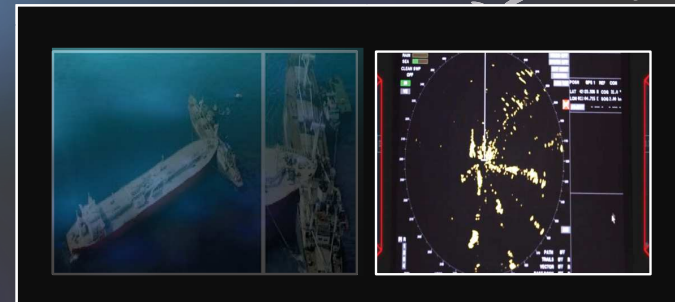
Pollution

Investigation said it was a technical failure



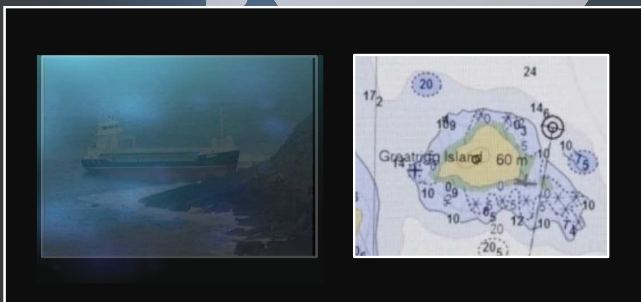
Collision

Investigation said it was human error

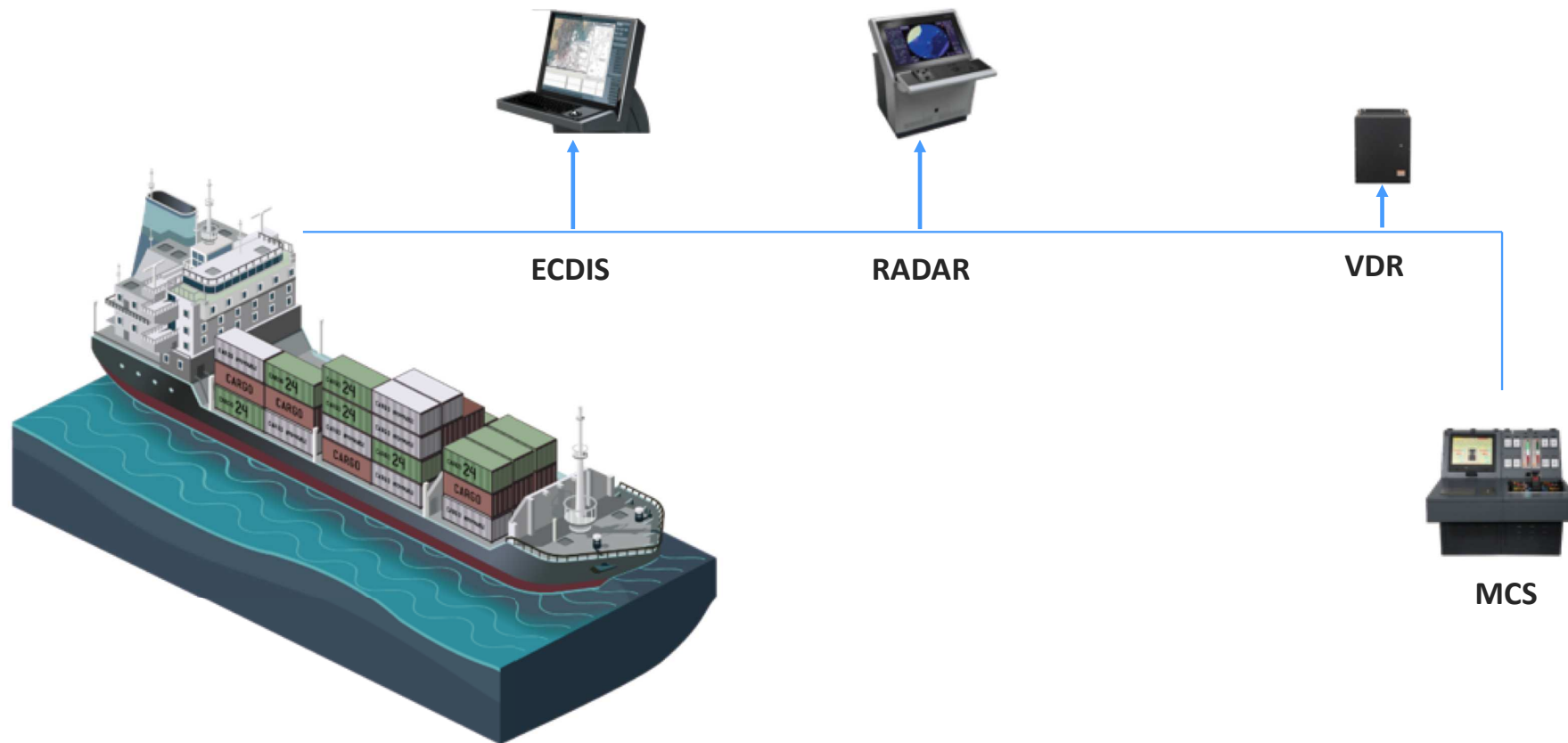


Ship went aground

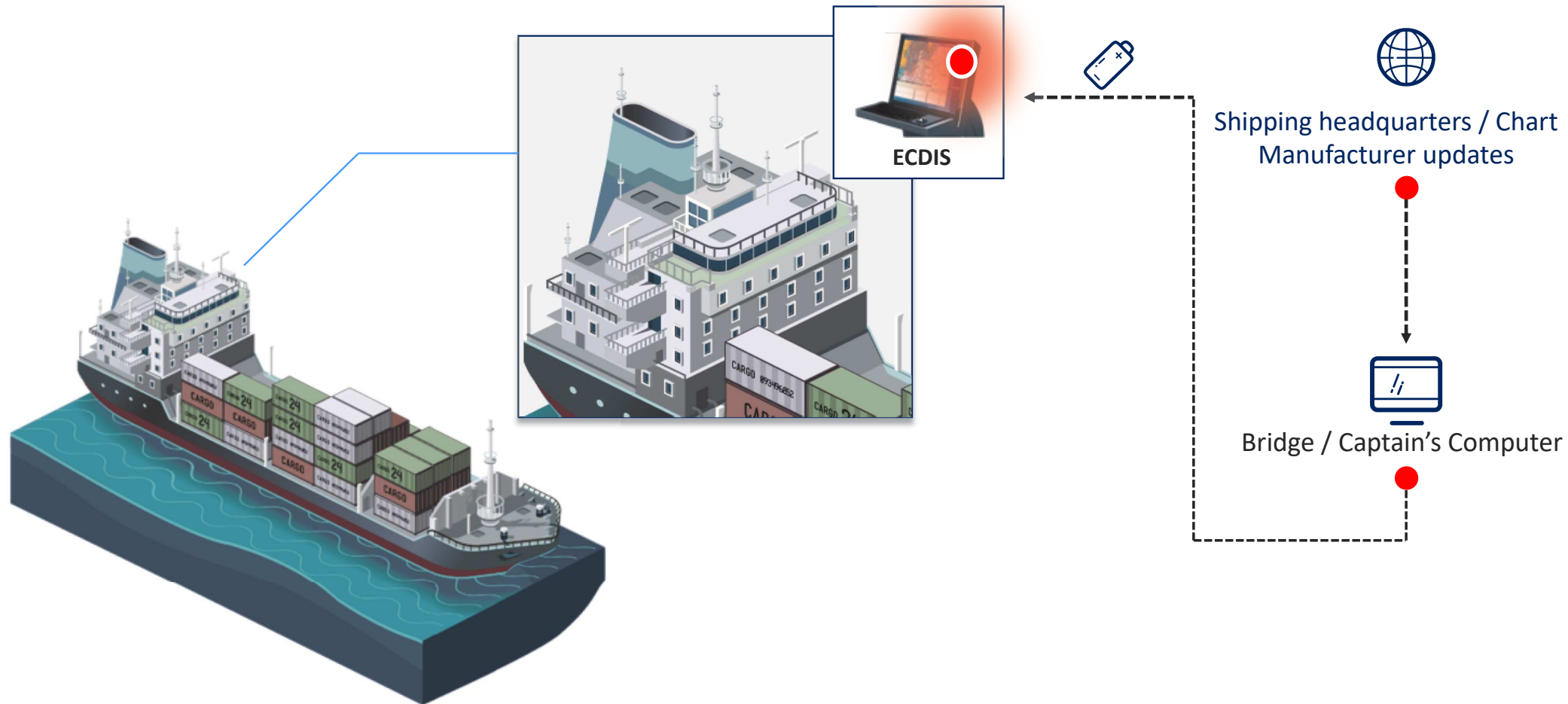
Investigation said it was human error



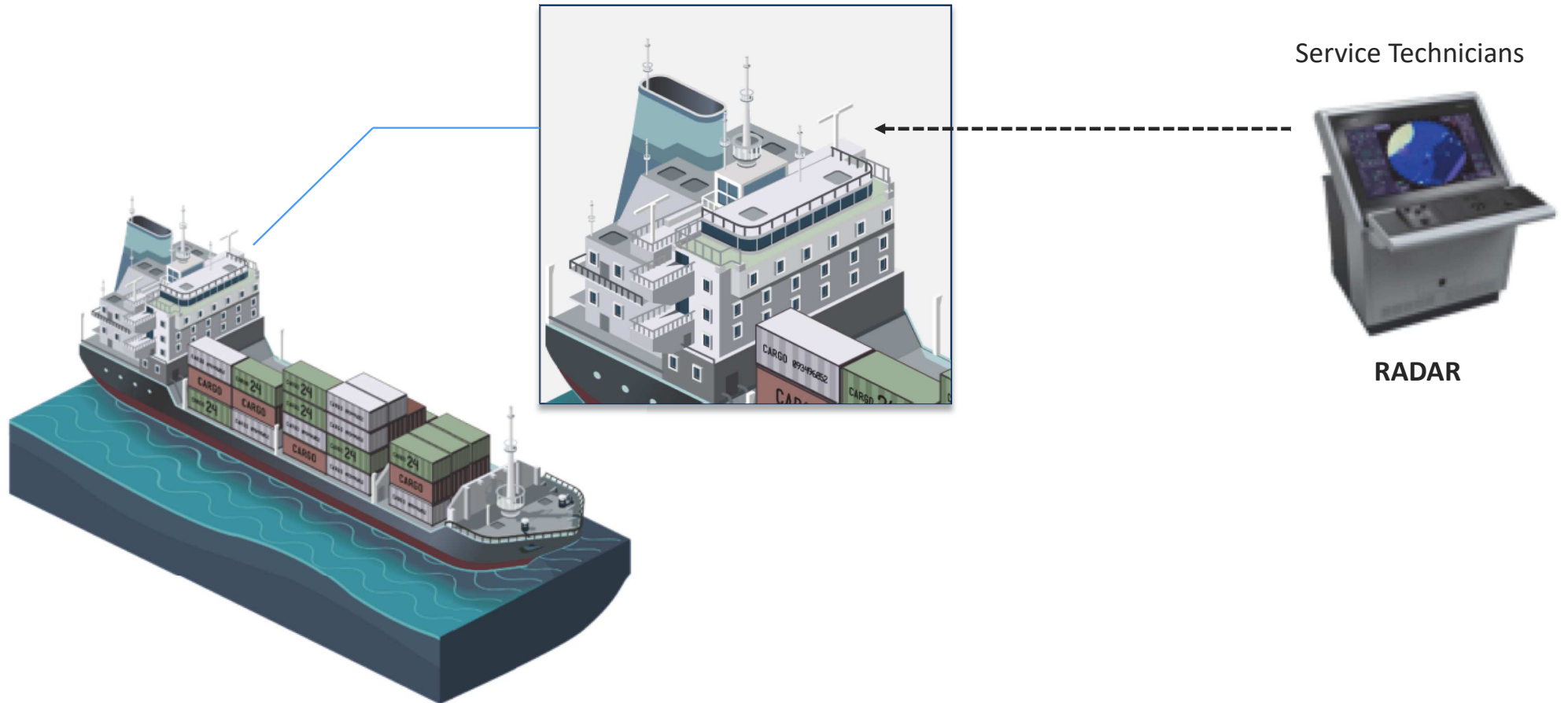
Critical PC-based systems onboard the vessel



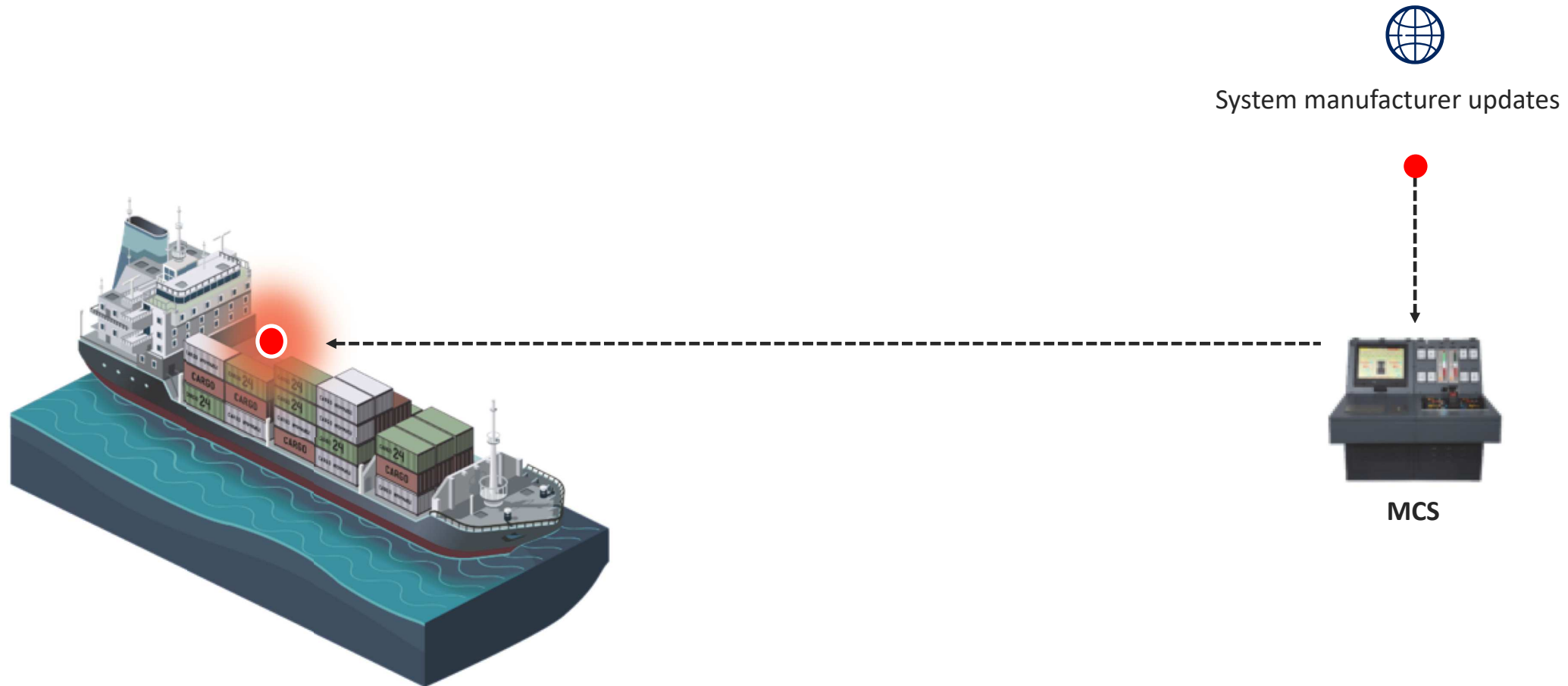
ECDIS Update



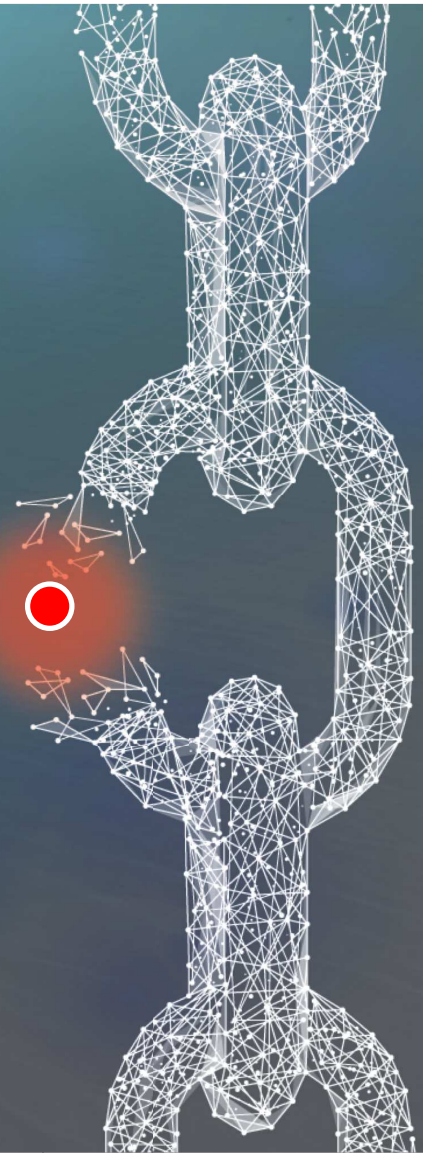
RADAR Service



Machinery Control Systems update/ fix a problem



NO vessel is an island



The Crew



private laptops



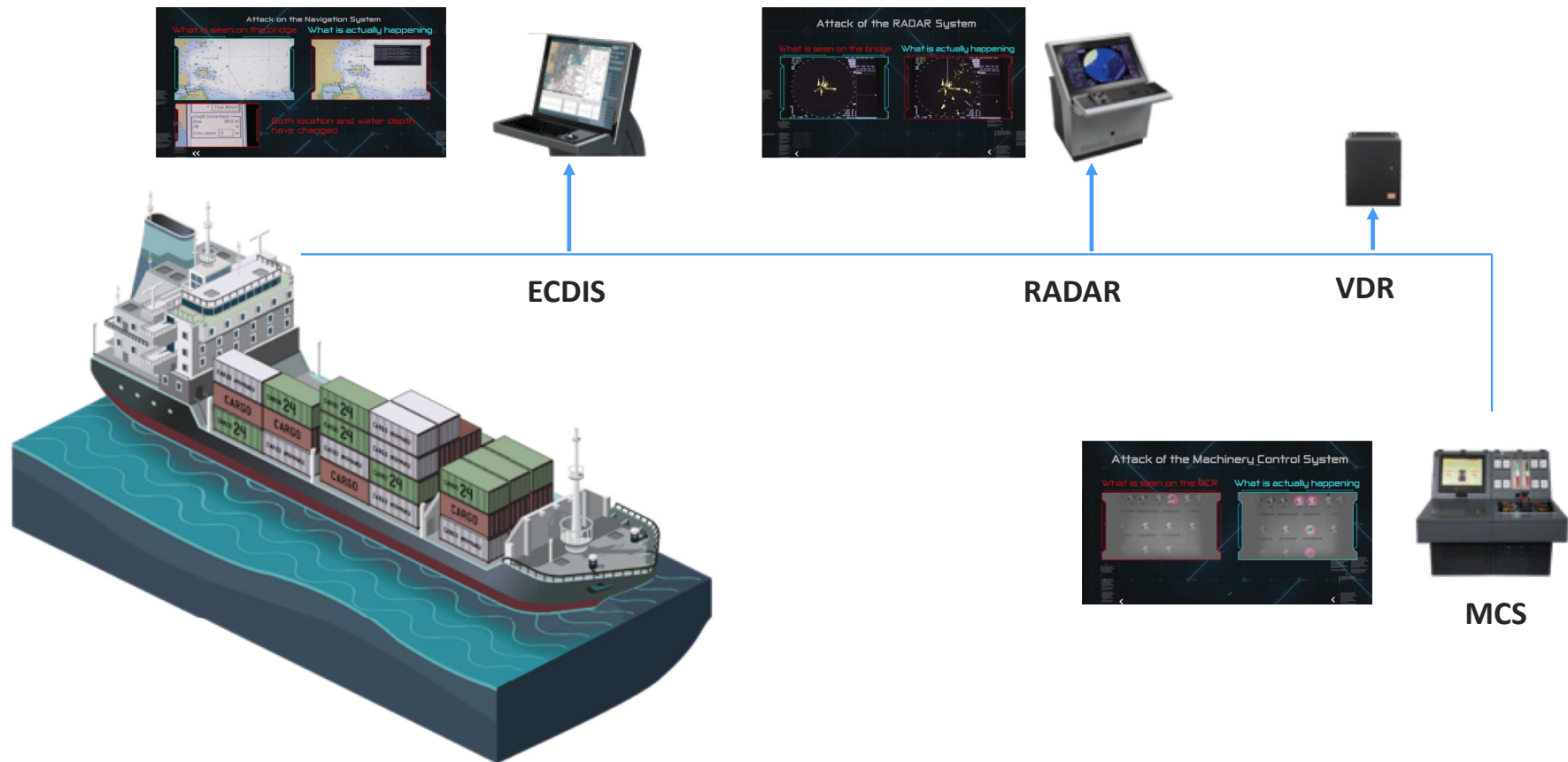
private mobiles



private USB sticks



All the systems are connected



Human factor

Current situation

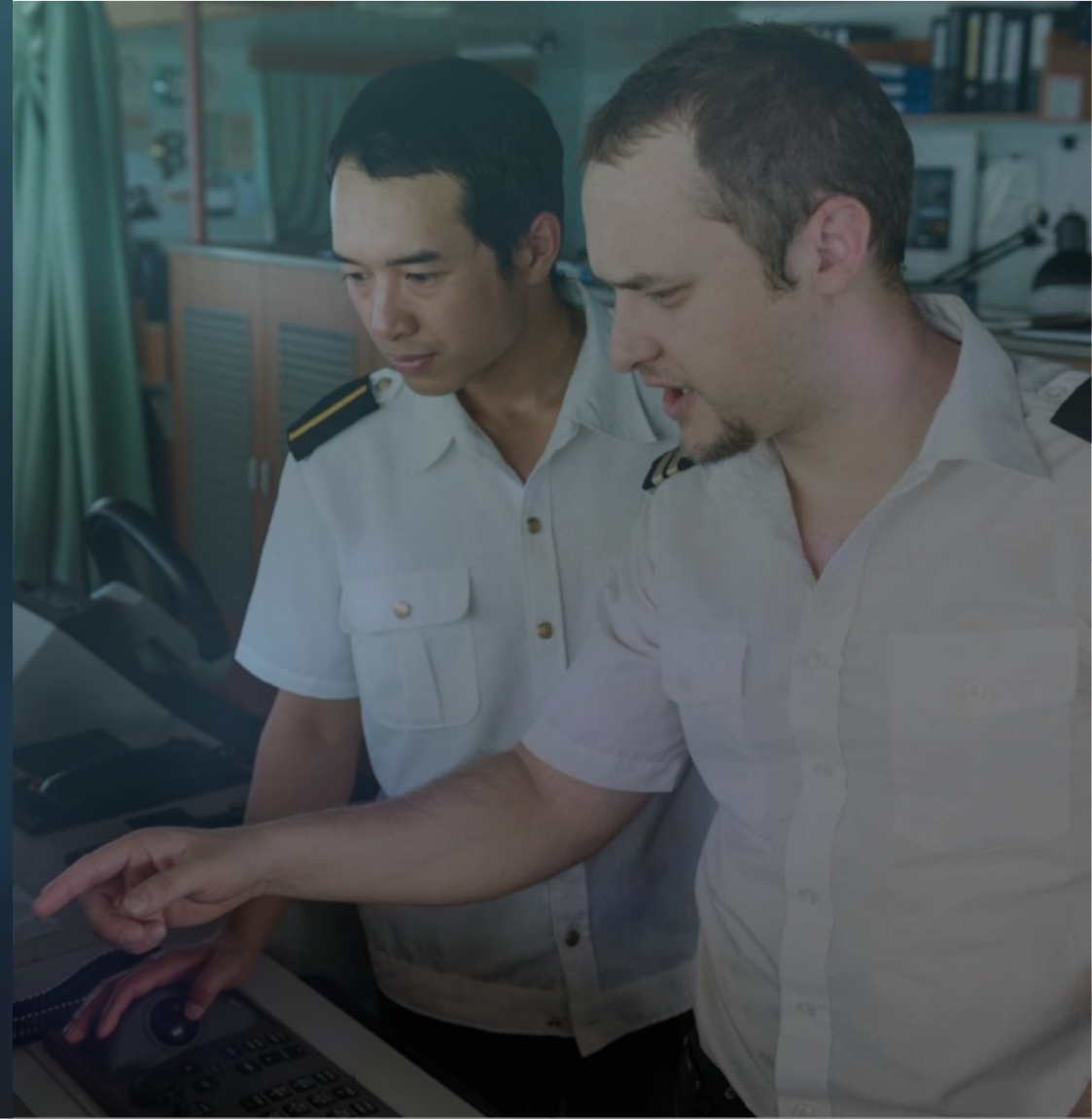
Train the crew to defend against cyber attacks

Problem

People make mistakes

Lesson Learnt

The human factor is part of the problem, not the solution



Decision making

Current situation

Most of the decision making onboard a vessel is based on data from the PC'S display

Problem

The PC display can be manipulated.

Lesson Learnt

The solution needs to directly protect the PC system



Protection layers

Current situation

People believe that it is enough to have one firewall or one antivirus to protect their systems

Problem

It is not enough

Lesson Learnt

The solution needs to function as a multilayer protection system

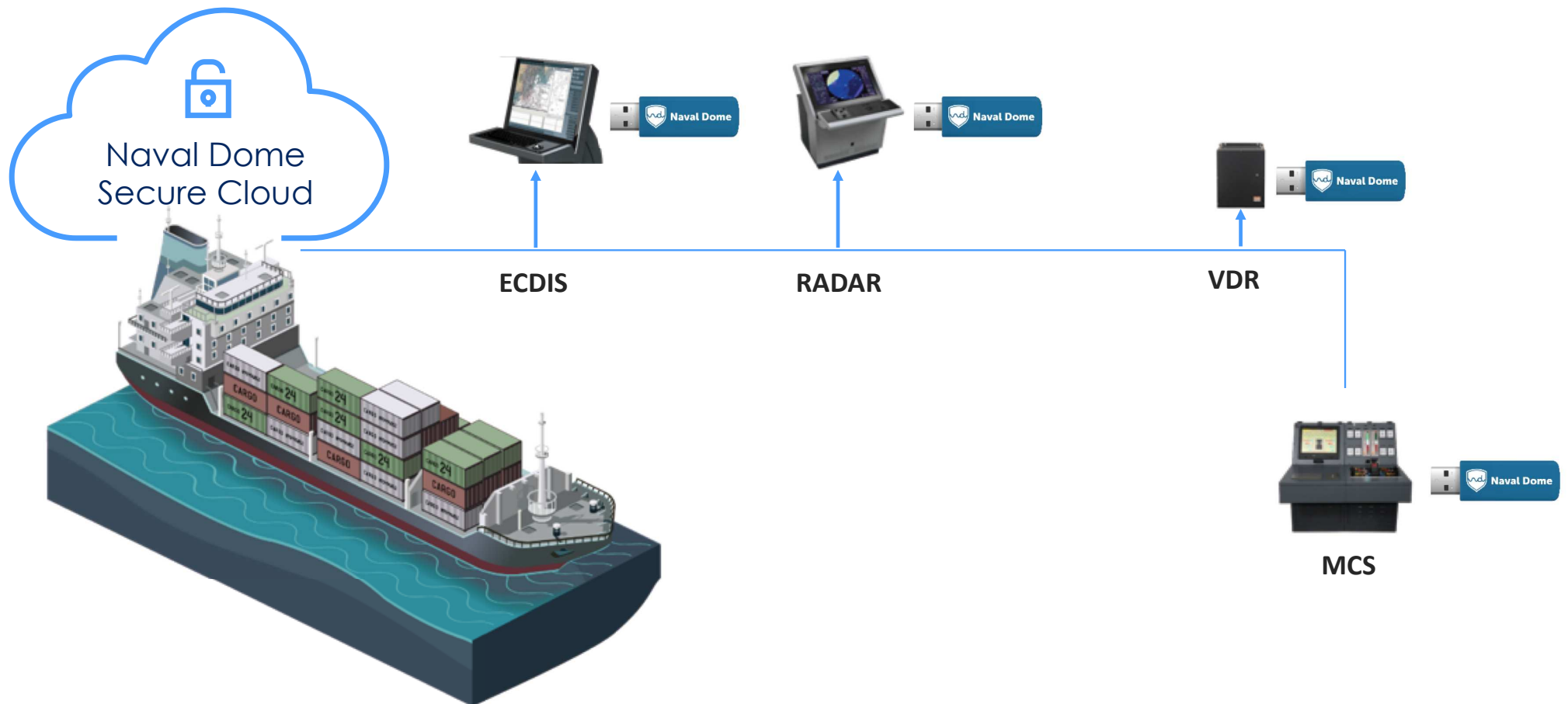


Major Conclusions

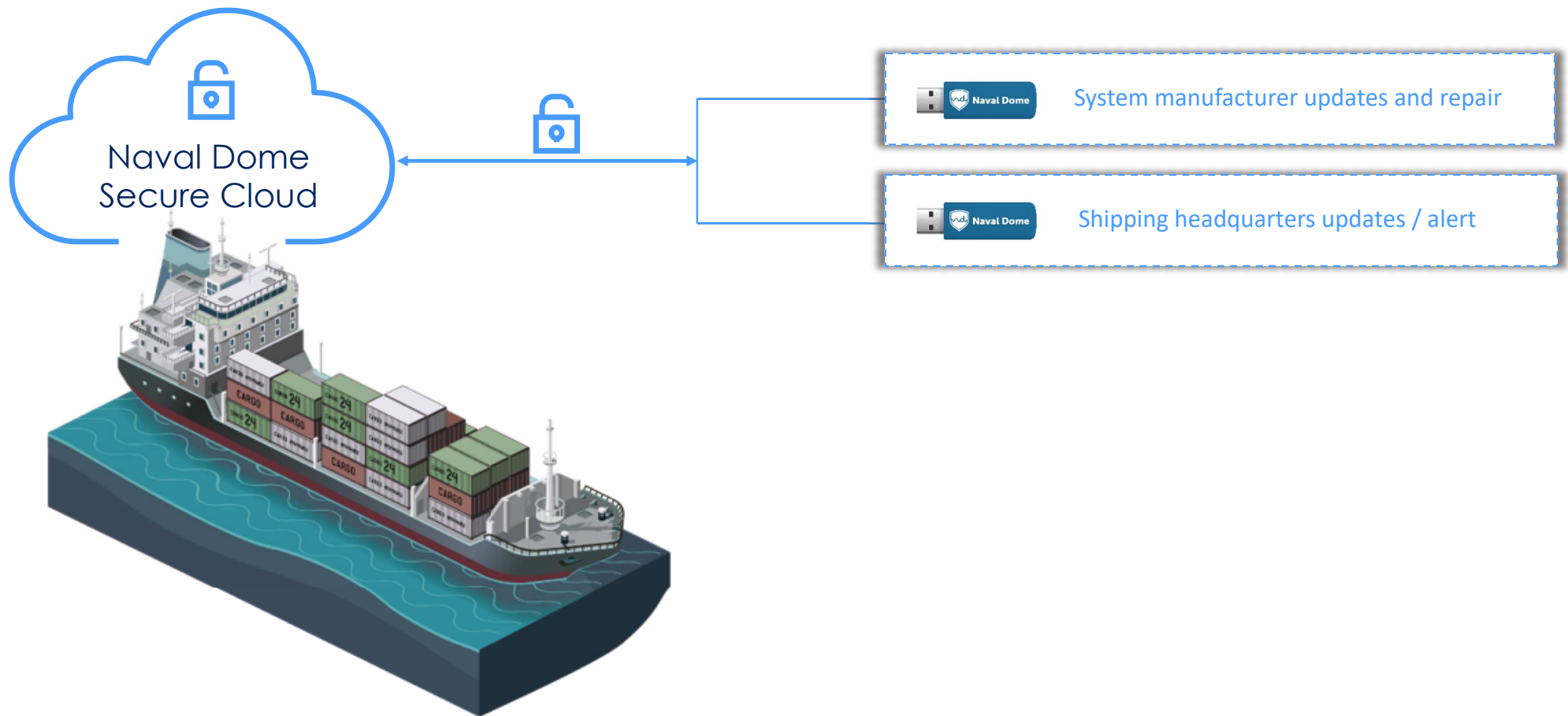
- 1 Remove the human factor
- 2 Directly protect the PC-based critical system on board
- 3 Build more layers of protection.
- 4 Protect against both vectors (external and internal)



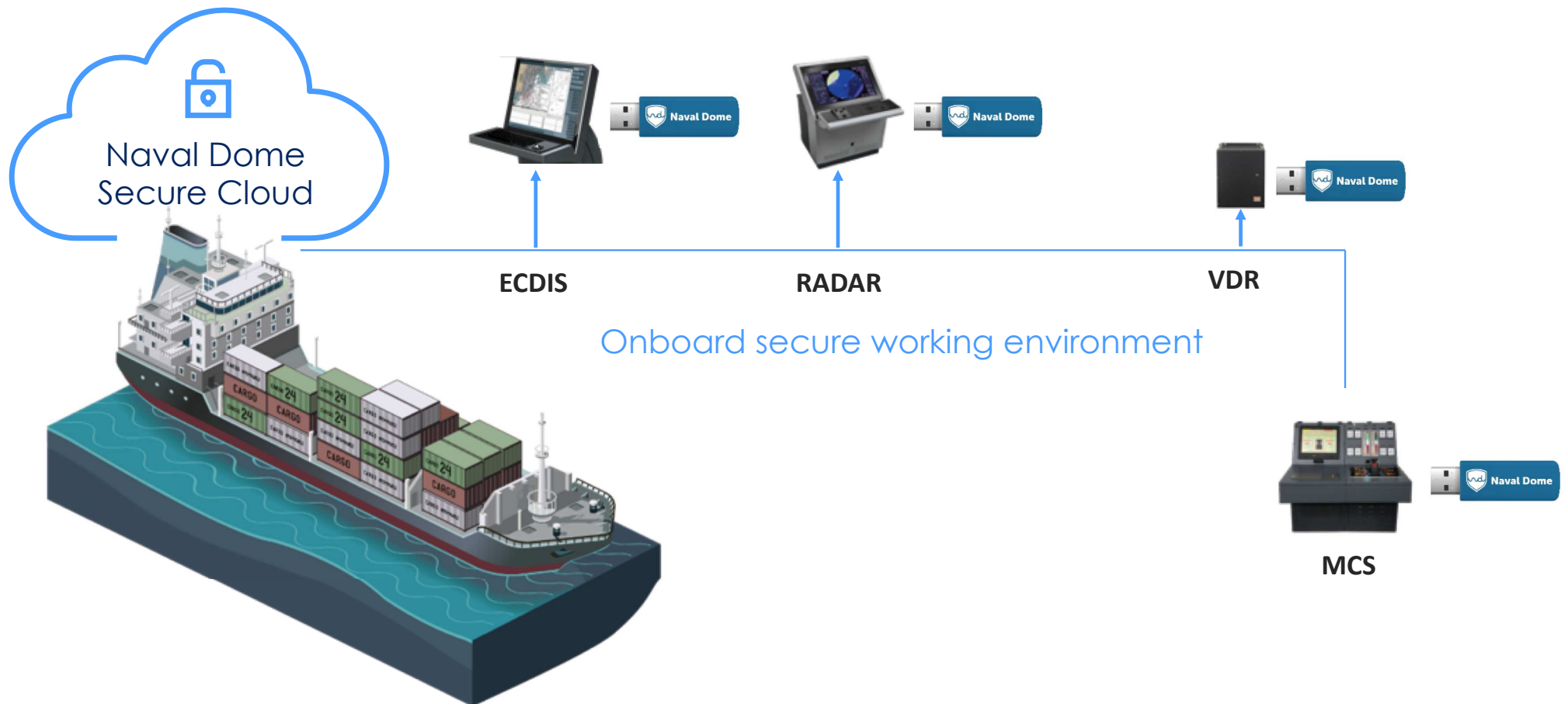
Naval Dome – two step solution



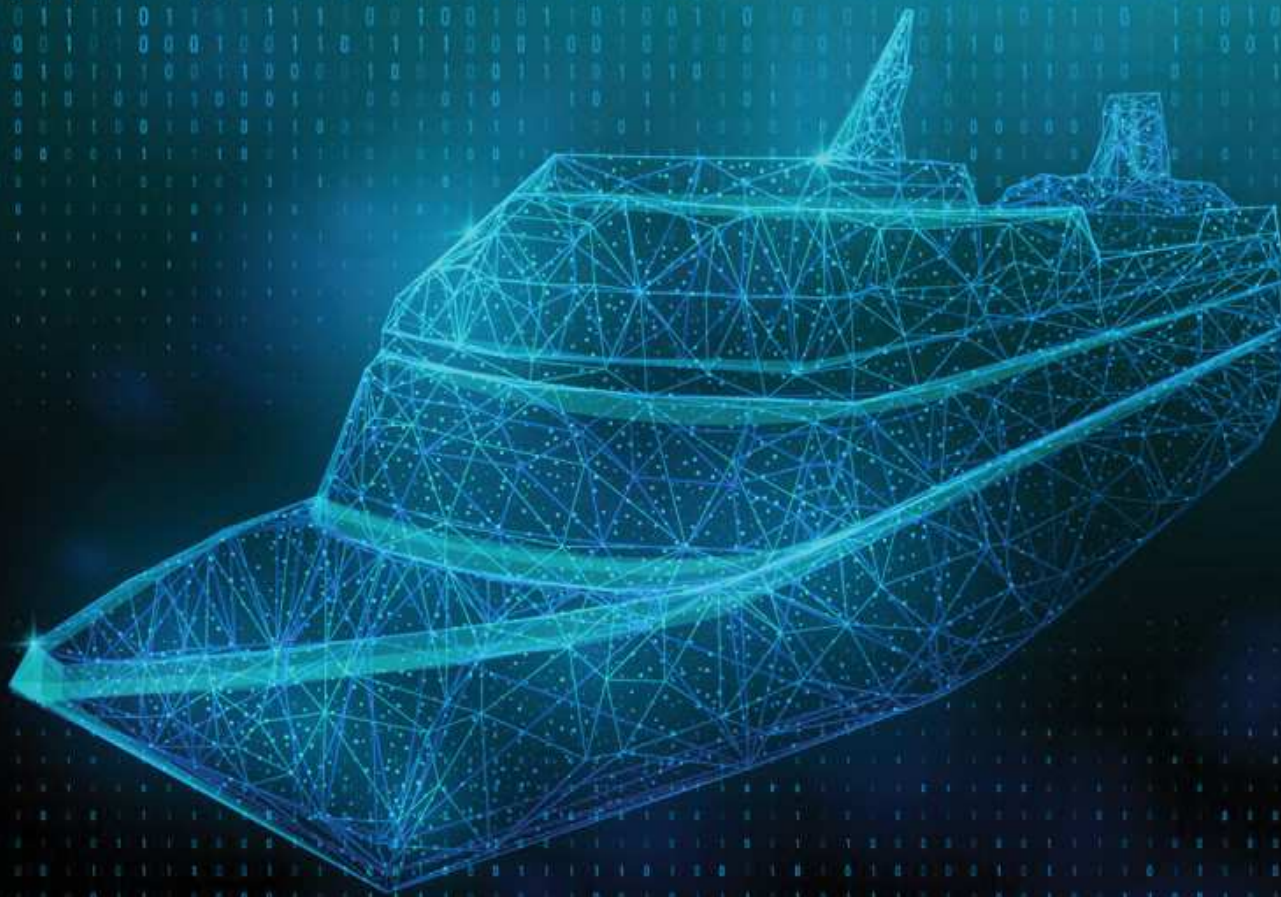
Naval Dome Secure cloud



Cloud and Endpoint protect your vessel







Thank You!

Itai Sela
Naval Dome's CEO