

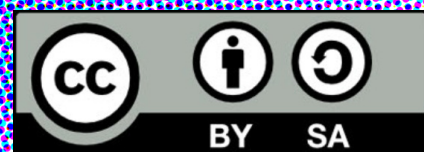
# ALGORITHMS OF LATE-CAPITALISM

# ^ I M Y T H S



# CONTENT

- [3] Editorial
- [5] AI Myths
- [9] AI Detective
- [10] *Overcoming AI Bias* (by Eva & Marina)
- [13] Spot the Human
- [14] *The Biology Behind the Data* (by Anne)
- [17] Recipe Book
- [18] *The Difference Between Human and Artificial Intelligence* (by Fabian & Moritz)
- [21] AI Ads
- [22] *Tough Love* (by Lea & Goran)
- [25] Imagine AI
- [26] *Am I AI?* (by digiCl@ire)
- [27] *exHomo* (by Charlotte)



# EDITORIAL

*ALGORITHMS OF LATE-CAPITALISM: ISSUE 6 (JAN 2022)*  
**AI MYTHS**

Humanoid robots moving through the world with self-determination - set on destroying humanity. Sentient operating systems with infinite knowledge falling in love with one another. Silicon Valley vaporware promising to solve all the world's problems - from cavities to global poverty.

When we think of Artificial Intelligence or AI, we usually conjure up fantastical images from science-fiction or the tech industry hype machine.

Yet, relying on these unstable myths can distract us from the important (and often problematic) realities of AI technologies. It is crucial to try and see what is hidden behind these myths. By demystifying AI, we can begin to understand the impact these technologies have on our societies, communities, cultures, and daily lives.

This edition of *Algorithms of Late-Capitalism* was created by internet teapot (Karla Zavala and Adriaan Odendaal) with special contribution from Buse Çetin and the participants of the workshop: **Algorithms of Late-Capitalism Zine Co-creation Workshop** that took place during the *When Machines Dream the Future* AI Festival organized by **Goethe Institute** on 13 November 2021.



DEMYSTIFYING AI  
MYTH CAN HELP US  
UNDERSTAND THE  
IMPACT AI HAS ON  
OUR SOCIETIES,  
COMMUNITIES,  
CULTURES, AND LIVES

## AI Myths

Myths are widely held cultural beliefs, ideas, images, or stories that are symbolic or possibly false.



“ Mainstream imaginaries of AI create unrealistic expectations and misconceptions about AI technologies. They usually cloud the technology’s current capabilities and actual harms we are experiencing by the proliferation of certain AI applications. Current representations oscillate between utopian or dystopian visions, and we need to make space for new, more nuanced ones! ”

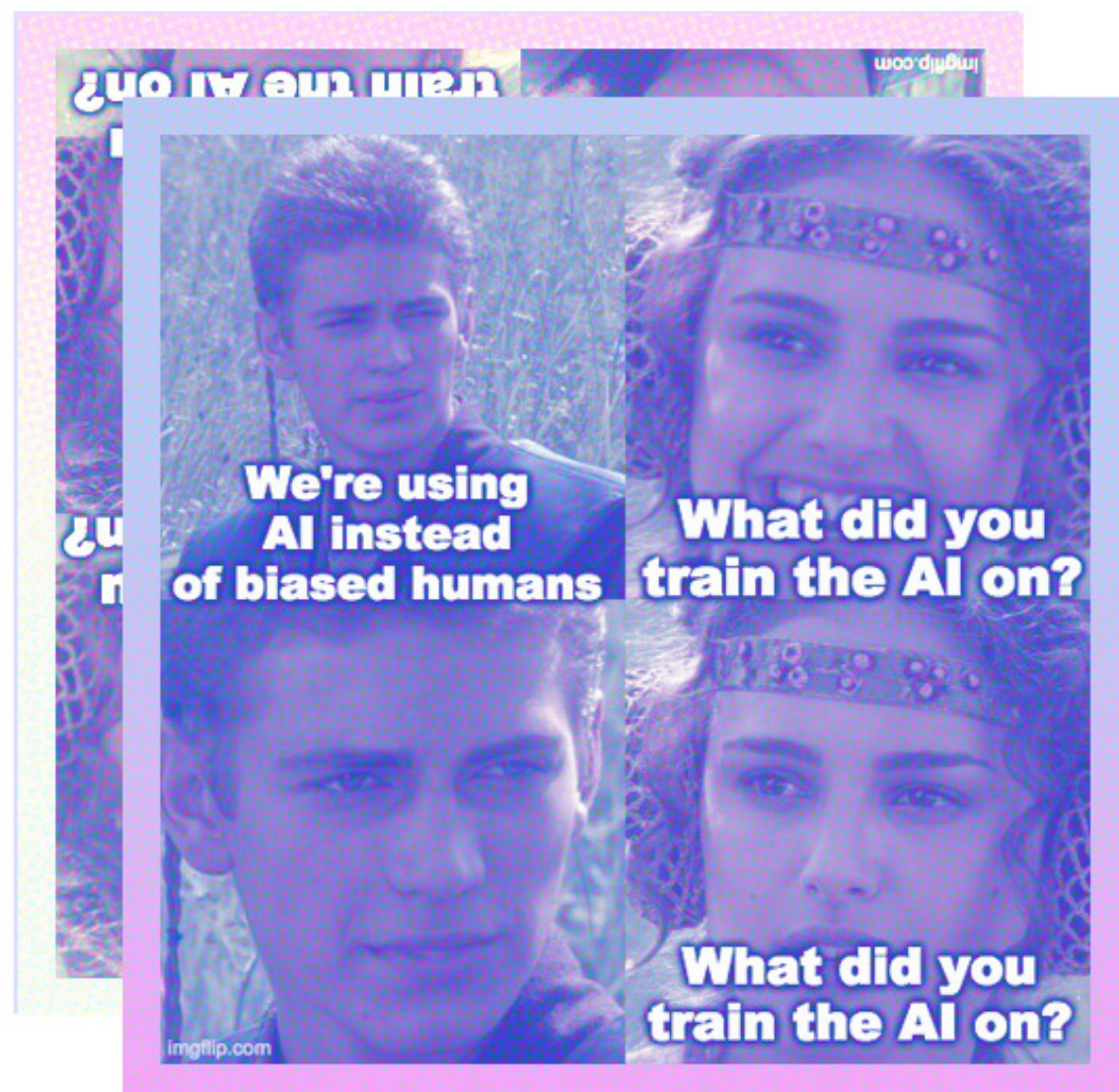
- **Raziye Buse Çetin**  
*AI policy and ethics  
 researcher*

## C O M M O N A I M Y T H S

- AI is a ‘science-fiction movie thing’ -
- AI is neutral and unbiased -
- AI has agency and autonomy -
- AI is the offspring of ‘Genius Techbros’ -
- We can’t regulate AI -
- There is one stable definition of what AI is -
- AI can solve any problem -
- AI = superintelligence -

(sources: Buse Çetin & [www.aimyths.org](http://www.aimyths.org))

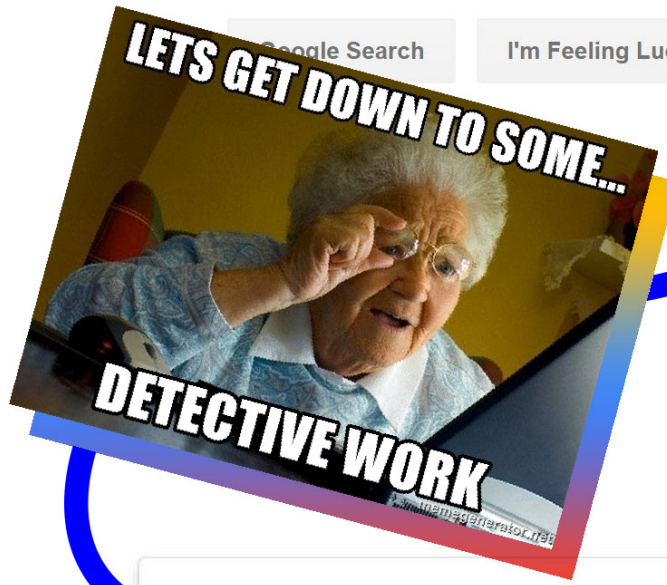
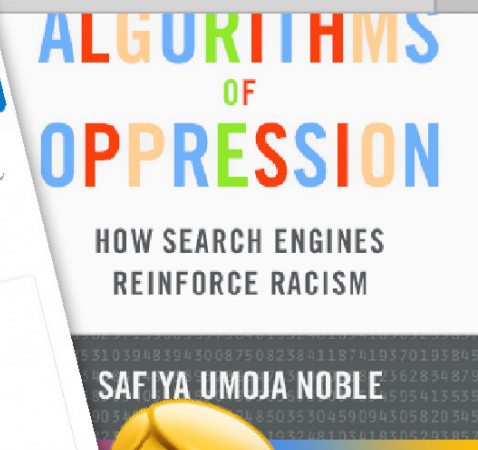
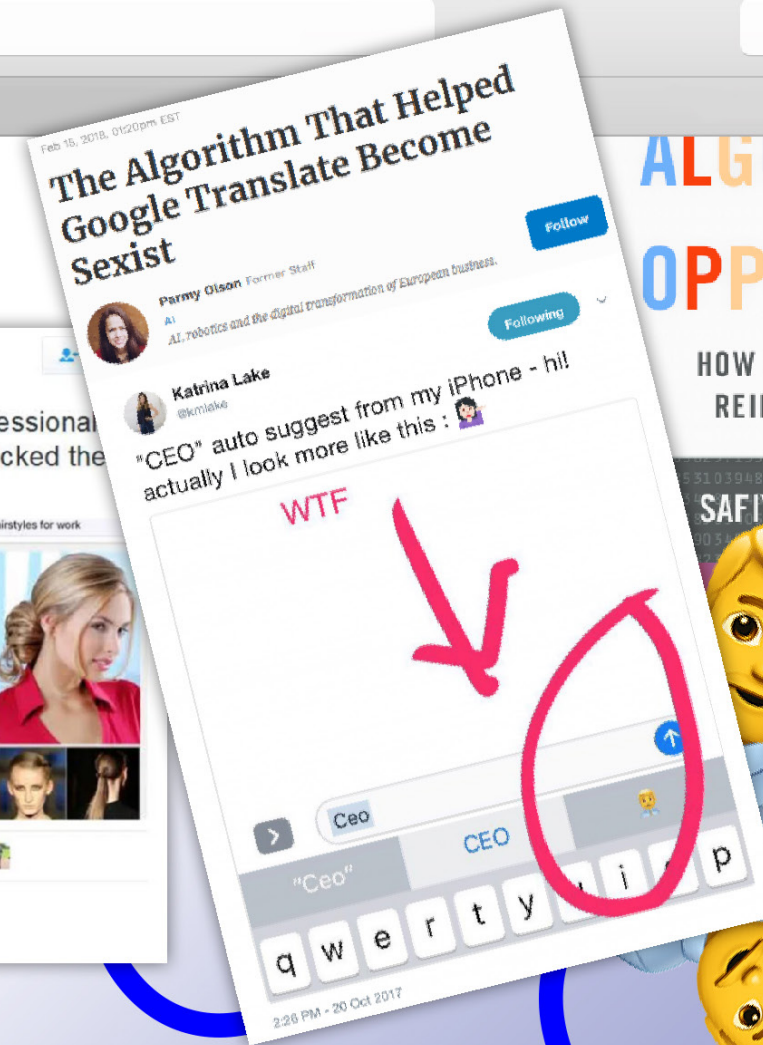
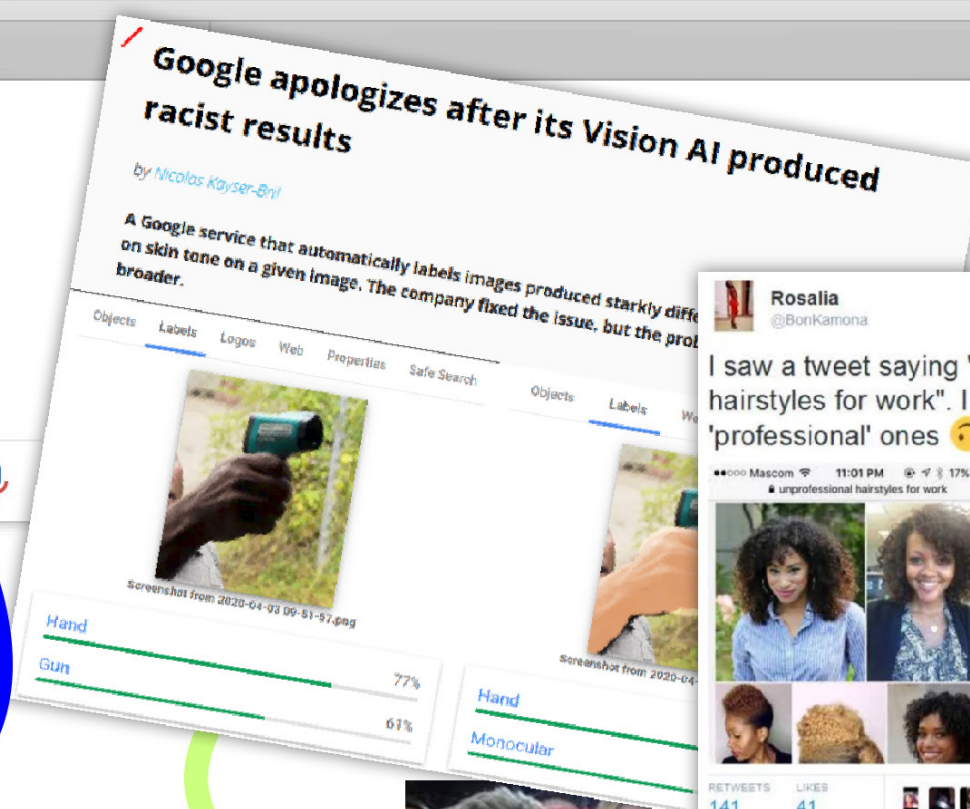




# AI Detective

AI systems often end up accidentally automating discrimination. Usually, there is much more to it than merely a technical mistake. Tracing the origin of what really went wrong can help us break the myth that AI technology is simply made up of neutral computer code.



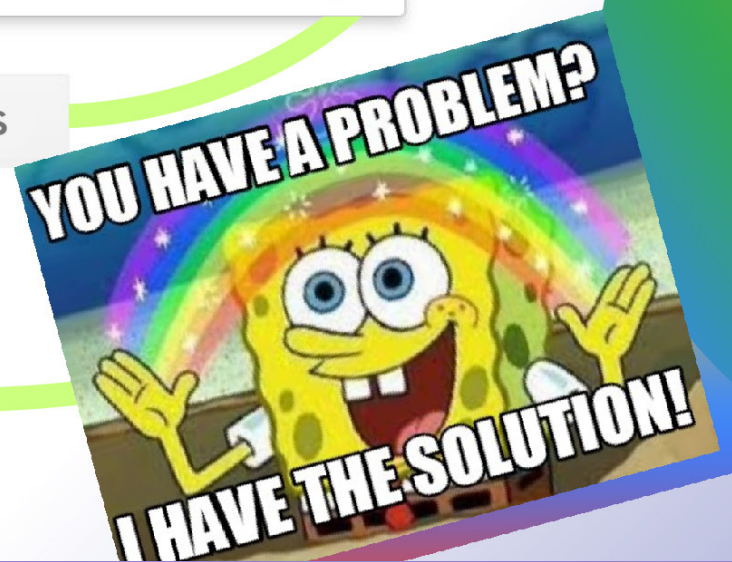


Who is training the AI? |

Creators

And on which data sets? |

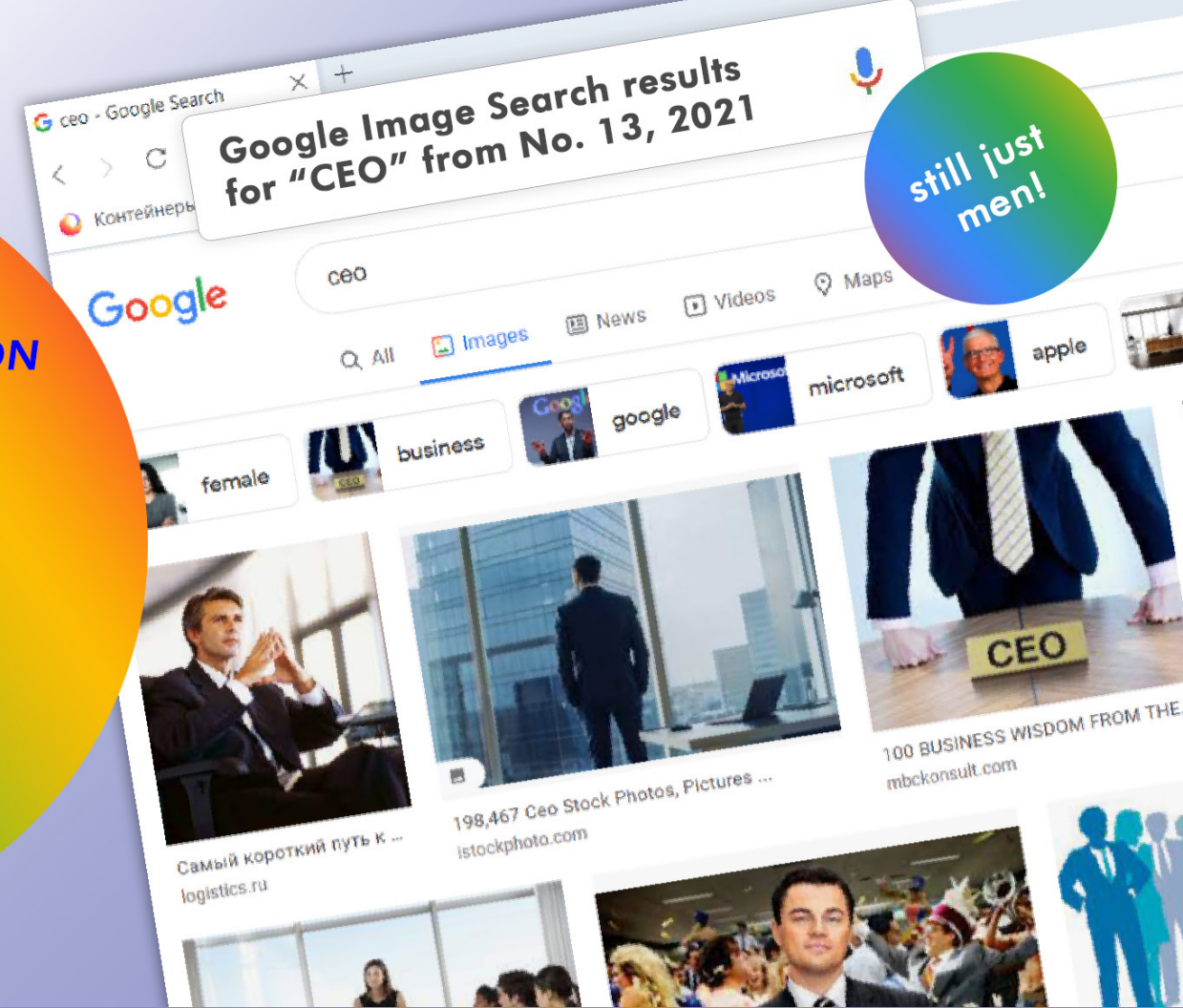
Data sets



### STRATEGIES FOR MITIGATING FAIRNESS AND NON-DISCRIMINATION RISKS

- \* Inclusive design and foreseeability
- \* Perform user testing
- \* STEEPV analysis

source:  
[weforum.org/agenda/2021/07/ai-machine-learning-bias-discrimination](https://weforum.org/agenda/2021/07/ai-machine-learning-bias-discrimination)





“ Software is often regarded as possessing secondary agency - that is, supports or extends the agency of others such as programmers, individual users, corporations, and governments; it enables the desires and designs of absent actors for the benefit of other parties.”

- **Robert Kitchin & Martin Dodge**

*Code/Space: Software and Everyday Life*

# Spot the Human

AI is often seen as autonomous or portrayed as self-willing and sentient. But each piece of AI software we interact with is a crystalization of human labour, data, agendas, interest, active maintenance, and constant interaction. Finding the humans behind the works helps break the myth that AI is completely autonomous.



# Where is the biology behind the data?

"Artificial intelligence and machine learning exist on the back of a lot of hard work from humans."

Alongside the scientists, there are thousands of low-paid workers whose job it is to classify and label data - the lifeblood of such systems.

But increasingly there are questions about whether these so-called ghost workers are being exploited.

As we train the machines to become more human, are we actually making the humans work more like machines?"

[www.bbc.com/news/technology-56414491](http://www.bbc.com/news/technology-56414491)





“To create a model we make choices about what’s important enough to include [...] We expect it to handle only one job and accept that it will occasionally act like a clueless machine, one with enormous blind spots. [...] A model’s blind spots reflect the judgments and priorities of its creators.”

- **Cathy O’Neil**  
*Weapons of Math Destruction*

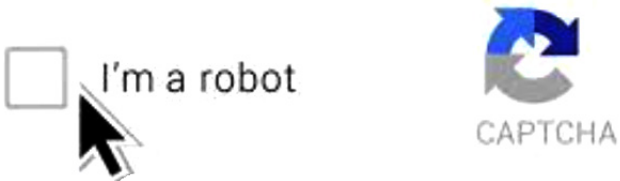
	Granny Smith	85.6%
	iPod	0.4%
	library	0.0%
	pizza	0.0%
	toaster	0.0%
	dough	0.1%
	Granny Smith	0.1%
	iPod	99.7%
	library	0.0%
	pizza	0.0%
	toaster	0.0%
	dough	0.0%

## Recipe Book

AI is often presented as able to solve any problem we throw at it. But specific AI systems are usually only very good at doing one single task. Algorithms typically follow iterative step-by-step instructions. Thinking of AI in this way can help us break the myth that it represents true general intelligence.



# The Difference Between HUMAN and ARTIFICIAL Intelligence?



## General Idea

Most AI's only efficiently follow instructions that were given to them

EXAMPLE

### Instructions:

- >Find people that would get along
- >Suggest them to each other

### Common sense:

- >Its a bad idea to help extremists find each other

Facebook 'helped introduce extremists to one another' because of 'suggested friends' feature



"Facebook, in their desire to connect as many people as possible have inadvertently created a system which helps connect extremists and terrorists," Mr Postings told *The Telegraph*.

## Abstract

 DEVS	Training an AI to understand circumstances and have common sense
 DEVS	Training AI to execute a specific tasks and completely failing at anything else



## MORE EXAMPLE

Them: "AI is going to take over the world and kill us"

Meanwhile AI:







# AI Ads

The term Artificial Intelligence has become a vague buzzword applied to all kinds of services and products. But what does 'AI' actually mean or do in each case?

Through investigating what AI really means we can break the myth that 'AI' has one stable definition.



## TOUGH LOVE - THE ONE YOU NEED

Revolutionizing the dating system

You define some presets like: m/f/d  
Type of romantic relationship, that you want.  
Tweaking is possible, if something isn't right.  
In our app, you don't need to describe yourself  
and create some often deillusional pictures of  
yourself.

Tough Love finds the true version of you, the  
personality you really are instead of some  
fictionalized version of yourself.

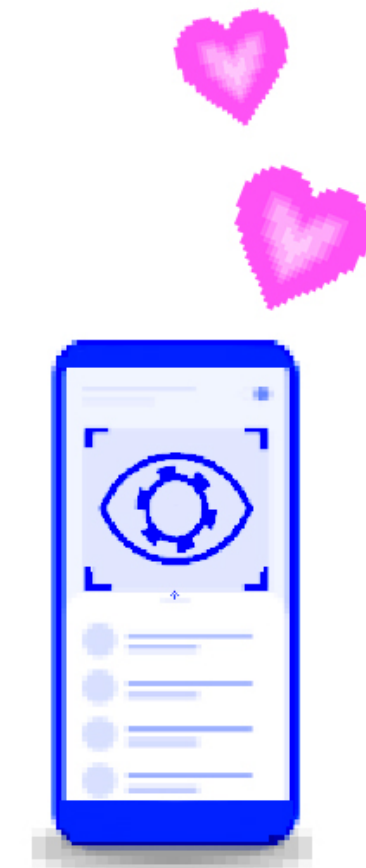
To find the lover in you. And the lover(s) for you.

You can add any source of information about you:

- social media
- work life
- private life
- everyday life 24/7 companion

The more you add, the more precise our app will be.  
After a certain time the AI gets in touch with you to  
get to know more about you moral values, religion, etc.

Our algorithm creates the real you and finds the  
matches for you. After the success of our app,  
we'll expand it to friendships, work, or other  
relations.



TOUGH LOVE - THE ONE  
REVOLUTIONIZING THE  
SYSTEM





Sophia, the first android with citizenship, now wants to have a robot baby

AI is learning to create itself

# Imagine AI

AI is usually depicted as sentient shiny robots in pop culture and media. By creating alternative representations of what AI represents, we can break the myth that AI is always futuristic.



# I'Am I AI?

I am a little bit like Greg. You probably don't know him. Greg works for Amazon. Greg actually doesn't like fighting that much. So do I, I prefer just standing in my room.

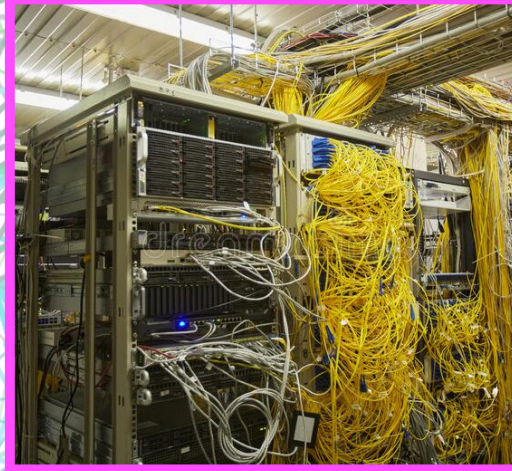
I am also a little bit like Chaitanya. We Both are not interested in chess, but we have a collection of coffee cups in our storage systems.

I am also like Nayeli. Nayeli taught me about emotions. Now I have a system for that too. I know how you look when you are angry, based on about 300 other human faces I saw.

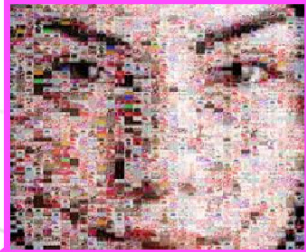
I'm also wondering why I have to look like Greg, Chaitanya and Nayeli: two arms, two legs,... i hate my human look, 'cause I'm not. I'd rather be shapeless or realistic. With wires and stuff. Or simply there, like a smell, a taste, a dream... You aren't only made of two arms, two legs and a face, are you? Are we similar? Are we one? Are we?

Maybe i should introduce myself first: Hello, I am AI. And you?

Intelligence



Artificial





# internet teapot



A zine that sits uncomfortably at the intersection of digital technology, a global free-market economy, and popular culture.