

550 WEST JACKSON

EXPERIENCE THE ENERGY. HARNESS THE POWER.

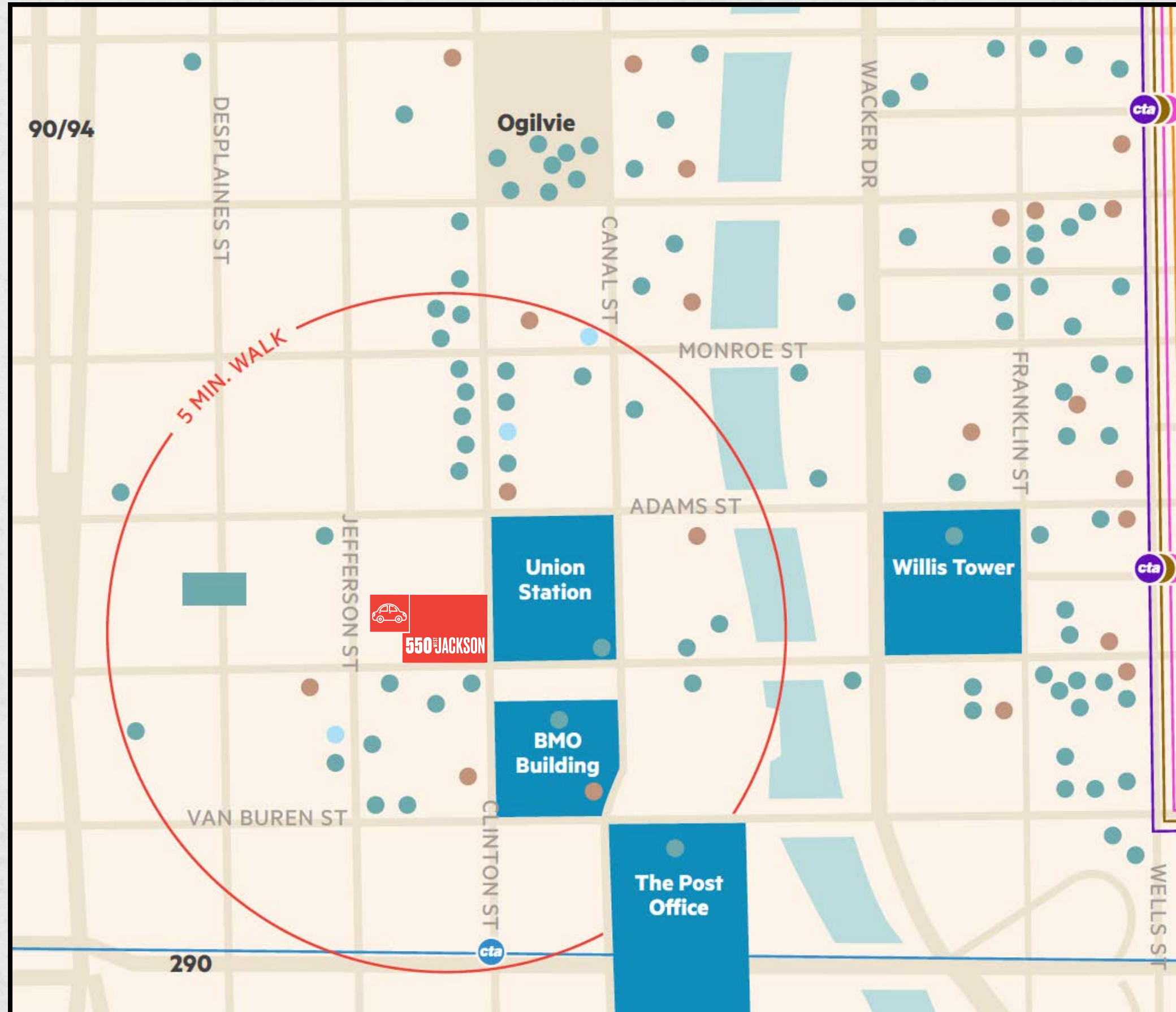
BUILDING EXTERIOR










SIGNAGE OPPORTUNITIES



550 WEST JACKSON



KEY

-  RESTAURANTS
-  COFFEE SHOPS
-  NEW RETAIL
-  CONVENIENCE /SHIPPING
-  CHICAGO TRANSIT AUTHORITY
-  170 CAR PARKING GARAGE
-  5 MINUTE WALK

AMENITIES - LOBBY / LOUNGE / CONFERENCE



AMENITIES - FITNESS CENTER + LOUNGE



TURNKEY SPACE



TURNKEY SPACE





POWER + REDUNDANCY

THE ENERGY OF 550 W JACKSON

4 GENERATOR ROOMS

Four separate generator rooms are available to potential tenants, each with an existing generator pad able to accommodate a tenant's custom engineered generator for potential back up power requirements. This is unique to 550 West Jackson.

2 SUBSTATIONS

The availability of two substations for a building under one million square foot is also unique to 550 West Jackson.



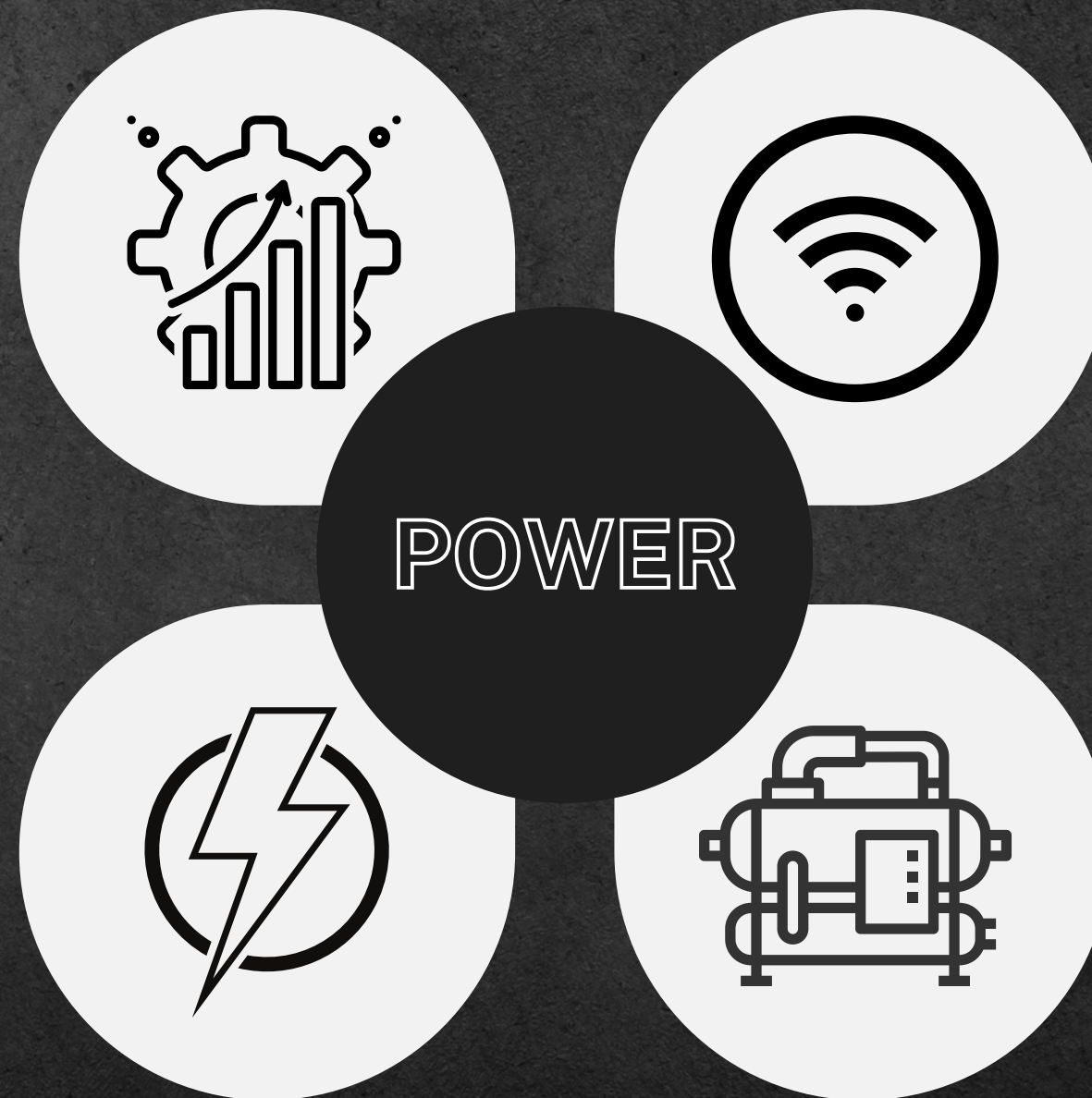
POWER + REDUNDANCY

CAPACITY

Standard power at 7 Watts/SF available to all tenants, 550 W Jackson has **40%** higher capacity than the industry norm of 5 Watts/SF

SUPPLY

Supplied by 2 autonomous ComEd Electrical Substations with Automatic Transfer Switches, power will automatically switch over if 1 feed loses power



CARRIERS

550 W Jackson has 6 fiber optic carriers, with 50% having 2 separate points of entry enabling the building to accommodate all fiber + cable needs

CHILLER

With a 400-ton tenant chiller backed up by Base Building chillers, 500 W Jackson allows tenants to install simpler, less expensive fan coils within their space

15TH FLOOR - 3 SPEC SUITES

17,171 RSF | COMING SOON



SUITE 1500

- 8160 RSF**
- (5) Private Offices
 - (40) Workstations
 - (1) Large conference -12 seats
 - (3) Huddle
 - (1) Phone room
 - (1) Wellness
 - Open Collaboration
 - Café lounge
 - Total Seats: 45**

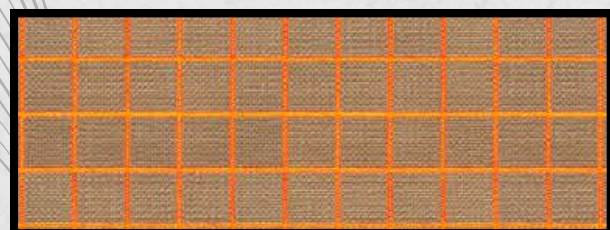
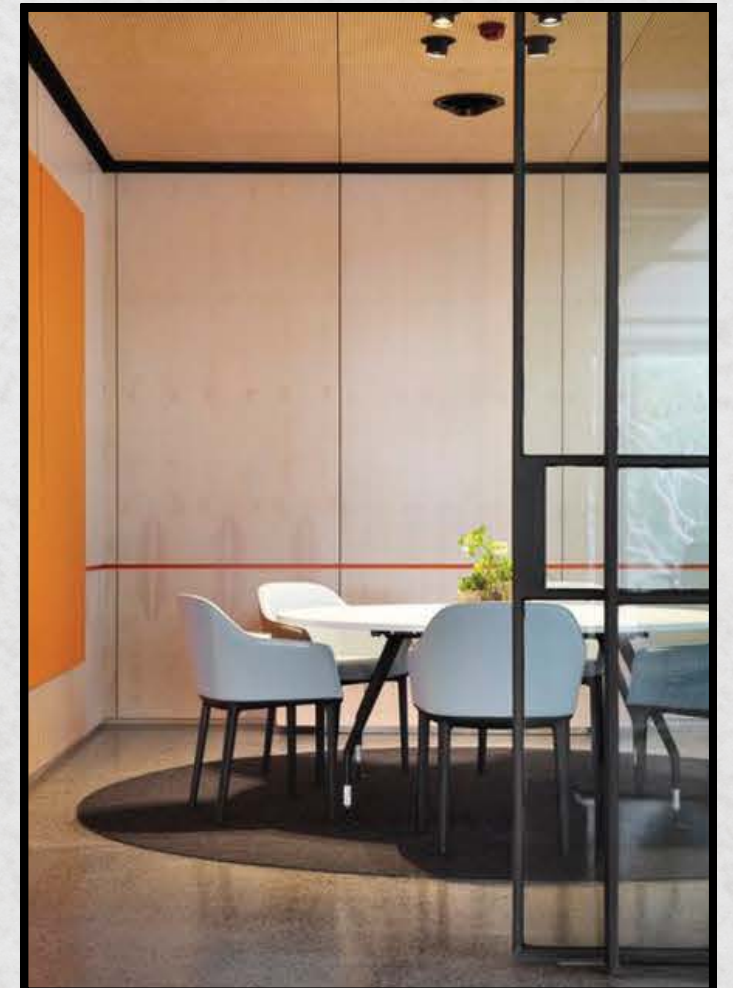
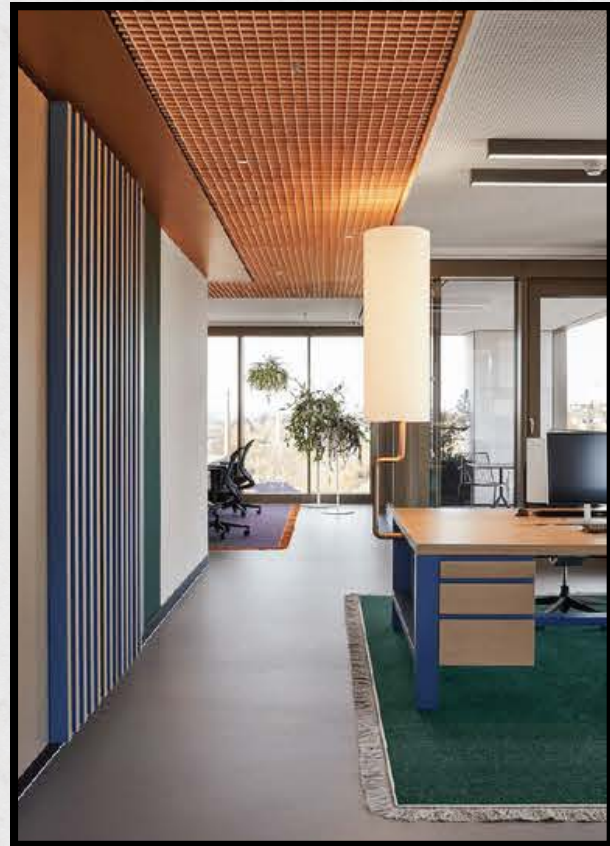
SUITE 1560

- 3,582 RSF**
- (3) Private Offices
 - (15) Workstations
 - (1) Large conference -8 seats
 - (1) Huddle
 - Café Reception
 - Total Seats: 18**

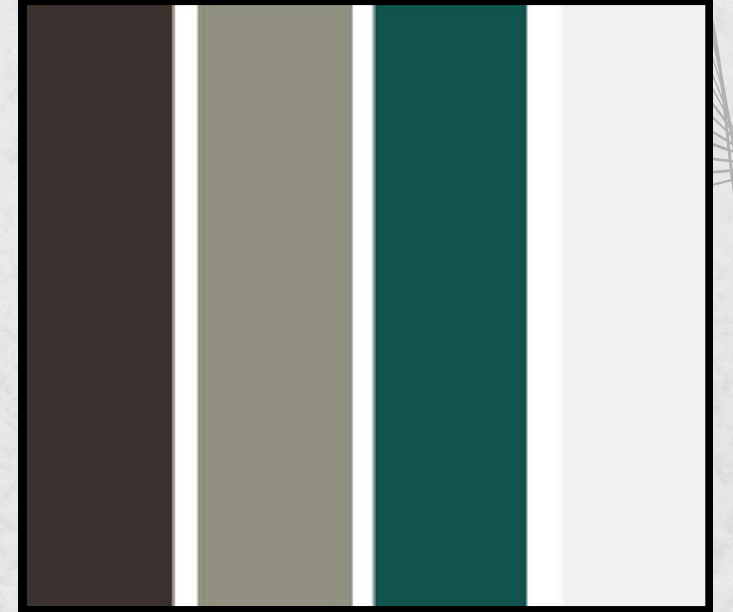
SUITE 1550

- 5,429 RSF**
- (5) Private Offices
 - (24) Workstations
 - (1) Large conference -10 seats
 - (1) Small conference -6 seats
 - (1) Huddle
 - (2) Phone room
 - Café
 - Total Seats: 29**

SPEC SUITE AESTHETIC

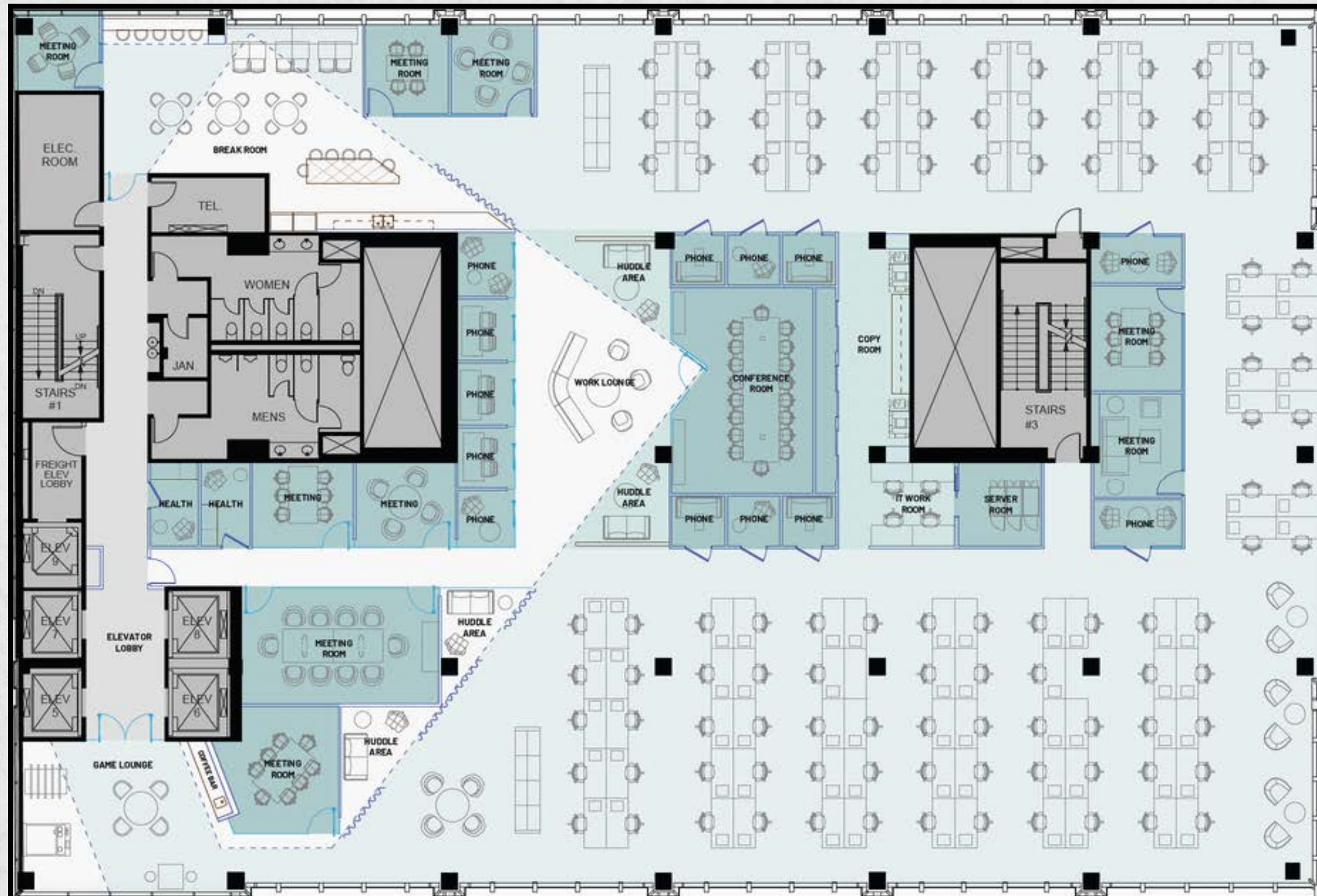


SPEC SUITE AESTHETIC



16TH FLOOR CONCEPT PLAN

17,171 RSF | FULL FLOOR OPPORTUNITY - AVAILABLE NOW

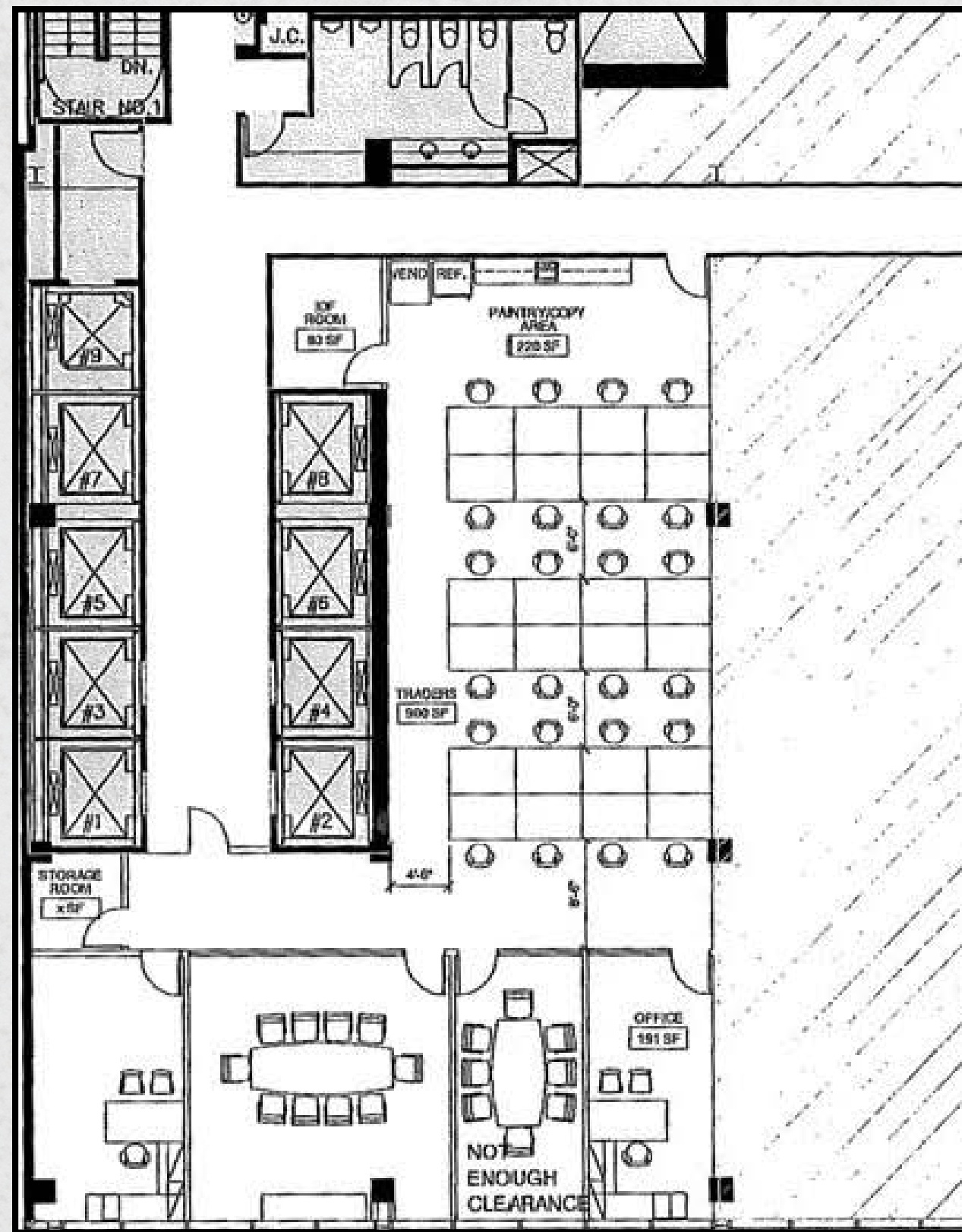


HIGH-RISE VIEWS



SUITE 720

3,999 RSF





550 WEST JACKSON

JEFF DOWDELL

JDOWDELL@TELOSGROUPLLC.COM

312.477.2932