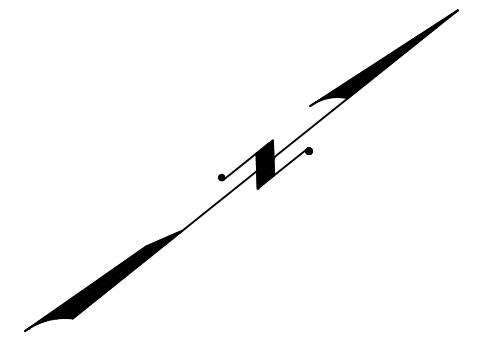


| REVISIONS | | | | |
|-----------|-------------------|--------|-------|-----|
| DATE | BY | LIC.NO | BLOCK | LOT |
| 05/2008 | ARNOLD W. BARNETT | 14987 | 1001 | 49 |
| | | | | |
| | | | | |
| | | | | |

SHEET 12

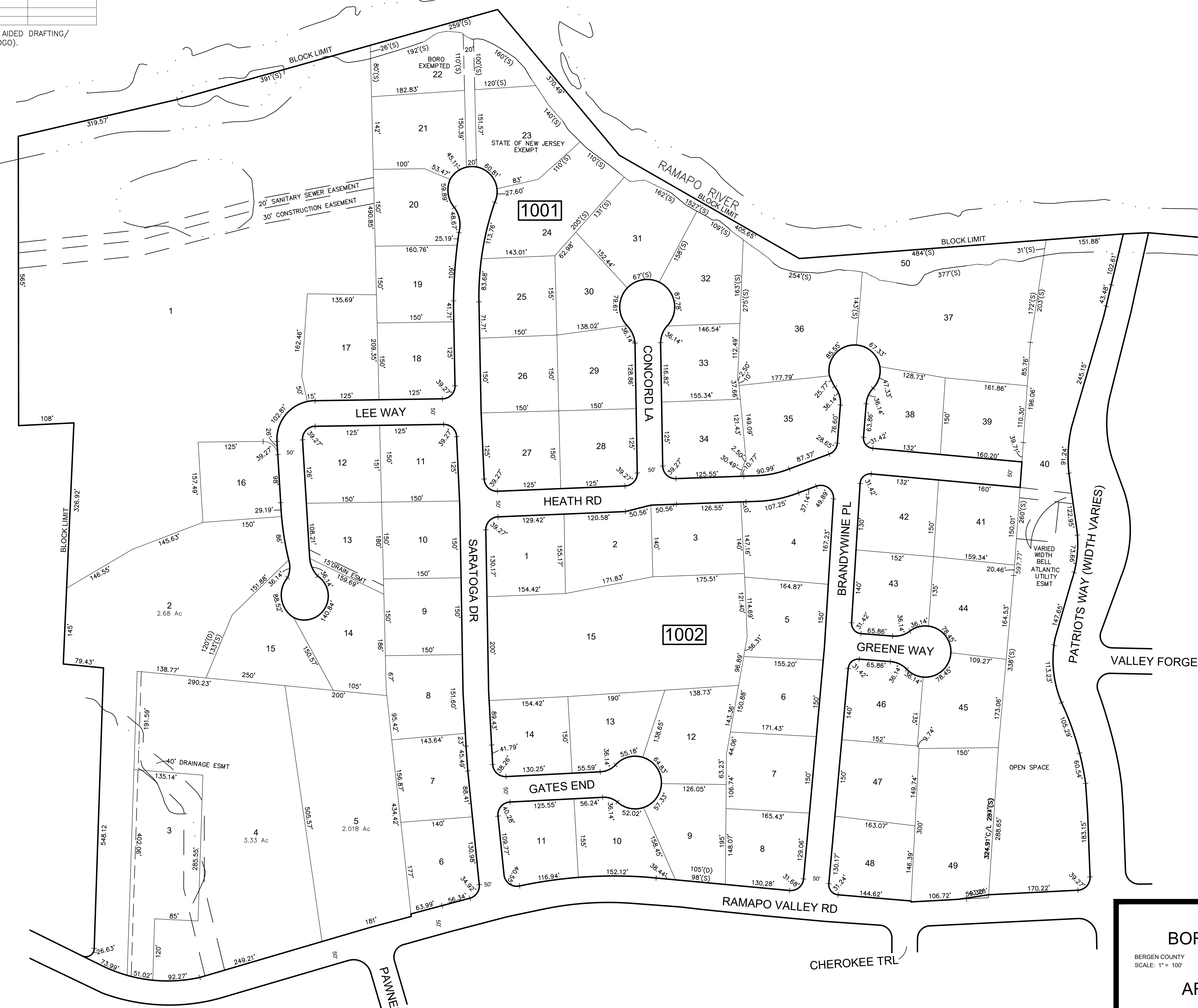
SHEET 11

* THIS SHEET HAS BEEN DRAWN USING COMPUTER AIDED DRAFTING/ DESIGN (CAD/D) AND COORDINATE GEOMETRY (COGO).



SHEET 13

SHEET 9



THIS MAP HAS BEEN GIVEN A FORMAL CERTIFICATION BY THE DIVISION OF TAXATION ON NOVEMBER 1, 2005, SIGNED BY SANTO C. DiDONATO, CTA AND ASSIGNED SERIAL NUMBER 869

TAX MAP
BOROUGH OF OAKLAND

BERGEN COUNTY
SCALE: 1" = 100'

NEW JERSEY
DATE: SEPTEMBER 30, 2004

ARNOLD W. BARNETT
PROFESSIONAL ENGINEER AND LAND SURVEYOR
NEW JERSEY LICENSE NO. 14987
850 SO. WHITE HORSE PIKE
HAMMONTON, NEW JERSEY 08037
CO# 24GA27973300

TO SHOW CONDITIONS AS OF DECEMBER 2021

SHEET 52

SHEET 53