

Drawn: RAD

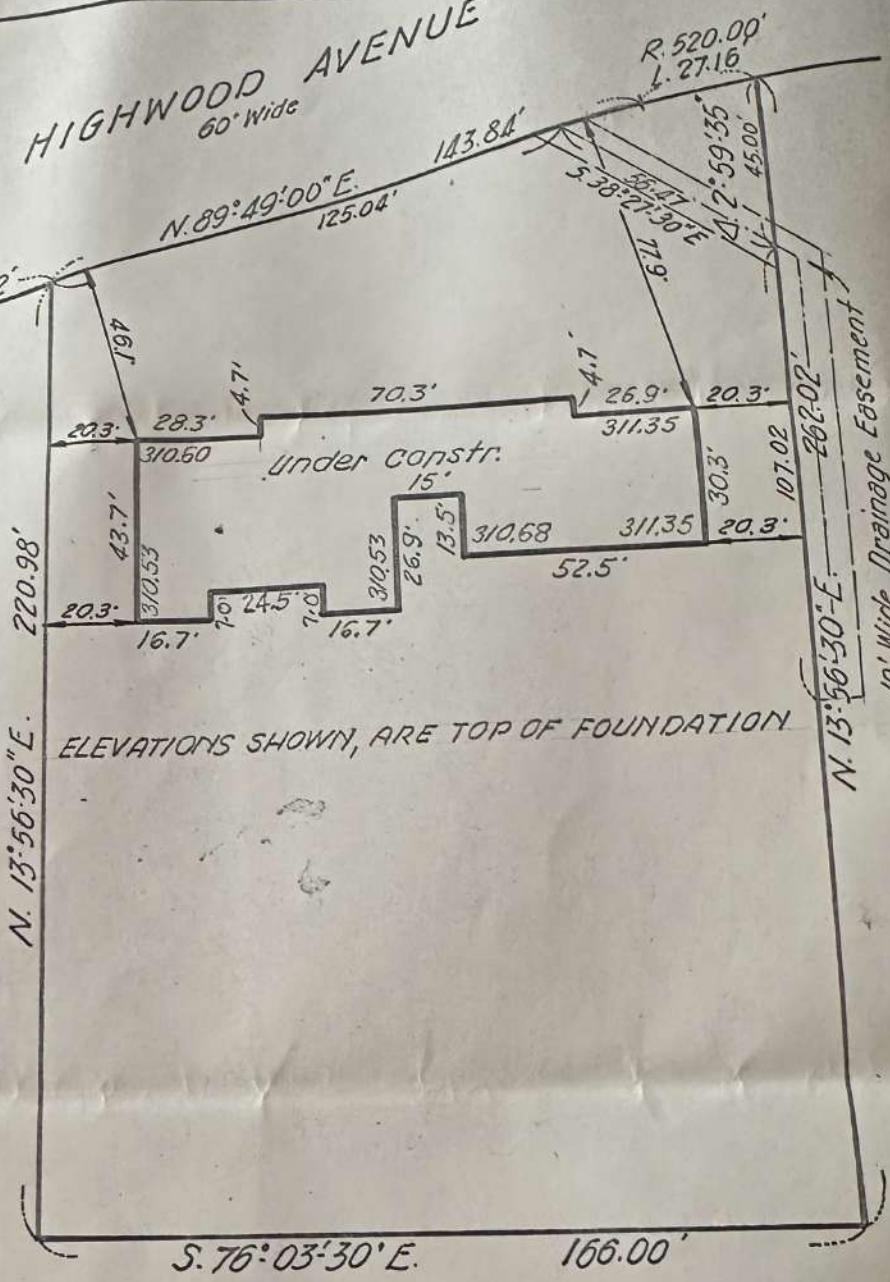
Checked: LB



HIGHWOOD AVENUE  
60' Wide

N/F F. Hessmer et als  
N. 47°19'25" E.

Mon.



ELEVATIONS SHOWN, ARE TOP OF FOUNDATION

ALL PARTIES INTERESTED IN  
TO THESE PREMISES:-

This is to certify that this survey is  
ate, and that this drawing is a true  
sentation of actual conditions existing on  
roperty. Dated... MAY 27 ...1966

*Chas. D. Koehler*  
N. J. License No. 6975

|   |              |                                   |
|---|--------------|-----------------------------------|
| MAP OF PROPERTY OF                        |              | LOT 33                            |
| <b>211 CORPORATION</b>                    |              | BLOCK 224                         |
| Boro. of Tenafly Bergen County New Jersey |              | MAP                               |
| CANGER ENGINEERING ASSOCIATES             | Scale 1"=40' | HIGHWOOD HEIGHTS<br>Section No. 1 |
| FAIR LAWN, N. J.                          |              | FILED 9-29-65<br>MAP NO. #6337    |

Revised:

Dwg. No. A.6500