



# Systematic versus combined biopsy which is better for detecting prostate cancer

Rong Na<sup>1</sup>, Tsun Tsun Stacia Chun<sup>1</sup>, Ada Tsui-Lin Ng<sup>2</sup>

<sup>1</sup> Division of Urology, Department of Surgery, LKS Faculty of Medicine, The University of Hong Kong

<sup>2</sup> Division of Urology, Department of Surgery, Queen Mary Hospital

## • Objective:

To compare the detection effect of prostate cancer (PCa) and clinically significant PCa between systematic biopsy and combined biopsy (systematic biopsy plus MRI-targeted biopsy) in Asian men

## • Patients & Methods:

➤ Design: Retrospective cohort

➤ Setting: QMH & TWH

Time: Jul 2015-Dec 2022

➤ Final Sample size: 1,377

➤ Exposure: Biopsy methods  
Outcome: Onset of PCa and clinically significant PCa (csPCa)

➤ Analytics: Logistic regression

Patients performed systematic biopsy or MRI-targeted biopsy between Jul 2015 and Dec 2022 (N=2,106)

a) Missing data, incl. biopsy score, GS (n=518)  
b) Conflicting pathological biopsy result (n=39)  
c) Missing pathological biopsy results (n=158)  
d) Only receiving MRI-targeted biopsy (n=14)

Excluded

Final Study population (n=1,377)

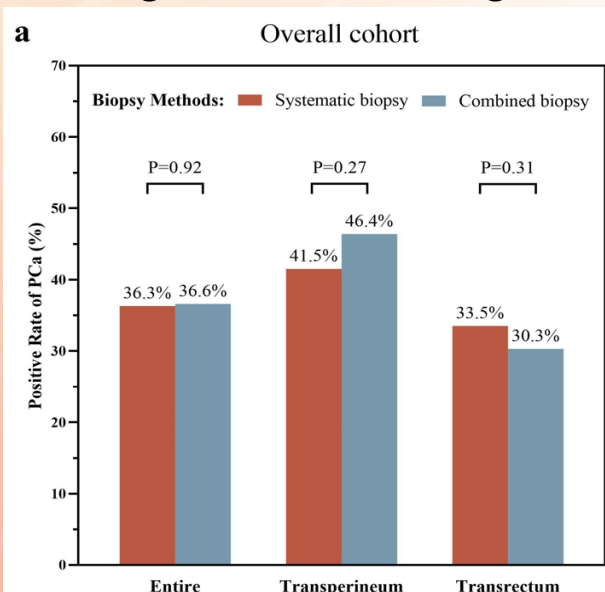
Grouping based on biopsy method

Systematic biopsy cohort (N=765)

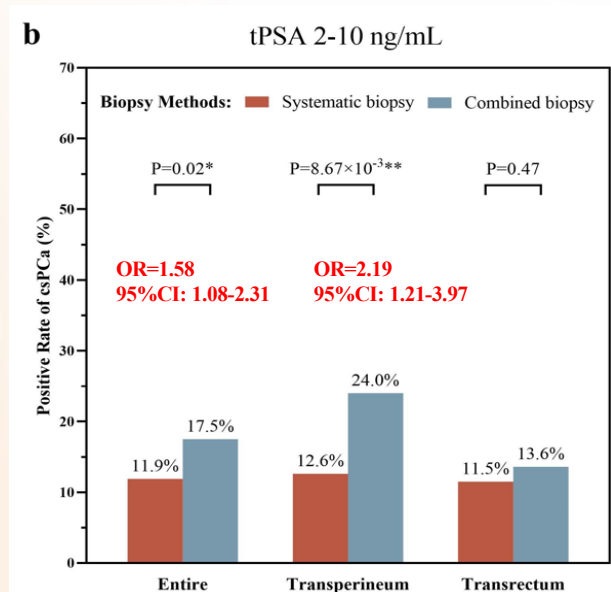
Systematic biopsy + MRI-targeted biopsy cohort (N=612)

## • Results:

Not significant in detecting PCa



Significant in detecting csPCa



• **Conclusion:** Systematic biopsy combined with MRI-targeted biopsy may perform better in detecting aggressive prostate cancer