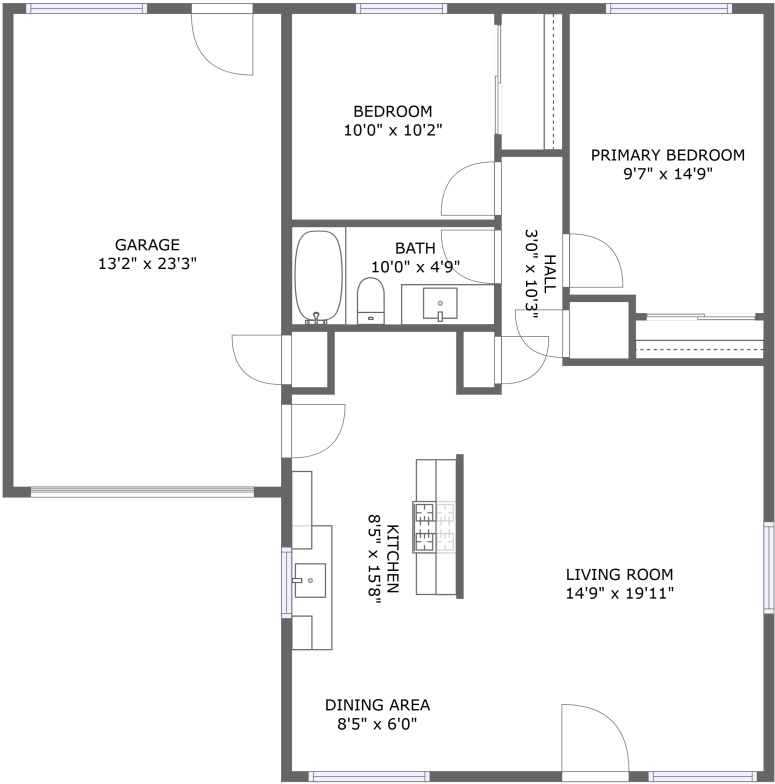


Home report

806 Cherry Circle, Orland, Glenn County, California, United States, 95963



FLOOR 1

Total Area: 863 sq. ft

Floor 1: 863 sq. ft

Excluded: Garage 307 sq. ft, Walls: 87 sq. ft

Property summary



1 Floors



2 Bedrooms



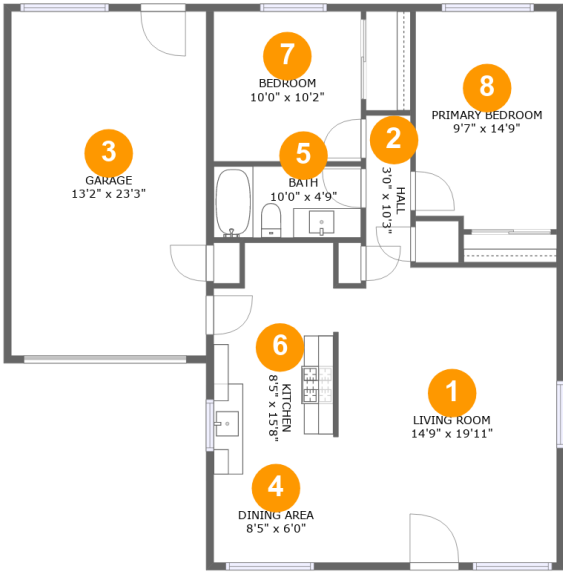
1 Bathrooms



1 Garages

Home report

806 Cherry Circle, Orland, Glenn County, California, United States, 95963

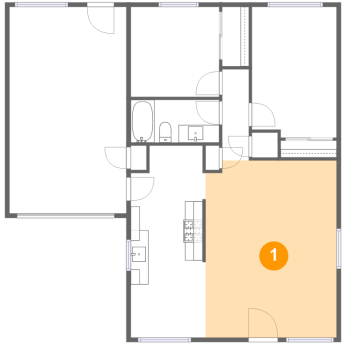


Room dimensions

Floor 1 Total:863sqft Excluded: 307sqft

#		Max Dimensions	sqft	Included
1	Living Room	14'9" x 19'11"	292 sq. ft	Yes
2	Hall	3'0" x 10'3"	31 sq. ft	Yes
3	Garage	13'2" x 23'3"	307 sq. ft	No
4	Dining Area	8'5" x 6'0"	50 sq. ft	Yes
5	Bath	10'0" x 4'9"	48 sq. ft	Yes
6	Kitchen	8'5" x 15'8"	124 sq. ft	Yes
7	Bedroom	10'0" x 10'2"	101 sq. ft	Yes
8	Primary Bedroom	9'7" x 14'9"	138 sq. ft	Yes

1 Floor 1 - Living Room



Max Dimensions: 14'9" x 19'11"
Calculated Area: 292 sq. ft
Included: Yes

Heated: Yes
Finished: Yes
Enclosed: Yes
Contiguous: Yes
Permitted: Yes
Wet space: No
Addition: No
Conversion: No

2 Floor 1 - Hall

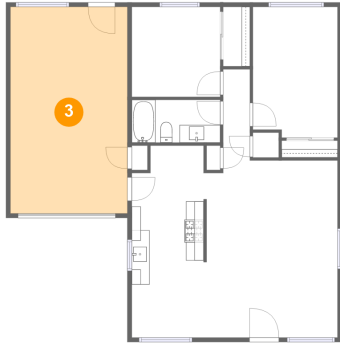


Max Dimensions: 3'0" x 10'3"
Calculated Area: 31 sq. ft
Included: Yes

Heated: Yes
Finished: Yes
Enclosed: Yes
Contiguous: Yes
Permitted: Yes
Wet space: No
Addition: No
Conversion: No

806 Cherry Circle, Orland, Glenn County, California, United States, 95963

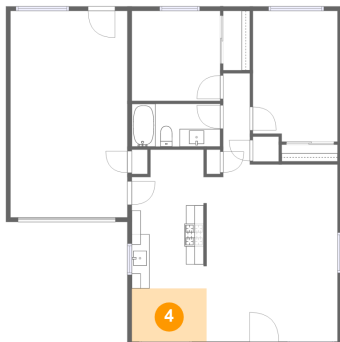
3 Floor 1 - Garage



Max Dimensions: 13'2" x 23'3"
Calculated Area: 307 sq. ft
Included: No

Heated: No
Finished: No
Enclosed: Yes
Contiguous: Yes
Permitted: Yes
Wet space: No
Addition: No
Conversion: No

4 Floor 1 - Dining Area



Max Dimensions: 8'5" x 6'0"
Calculated Area: 50 sq. ft
Included: Yes

Heated: Yes
Finished: Yes
Enclosed: Yes
Contiguous: Yes
Permitted: Yes
Wet space: No
Addition: No
Conversion: No

5 Floor 1 - Bath

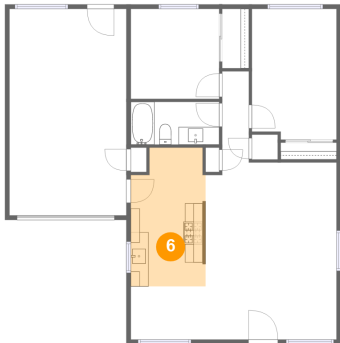


Max Dimensions: 10'0" x 4'9"
Calculated Area: 48 sq. ft
Included: Yes

Heated: Yes
Finished: Yes
Enclosed: Yes
Contiguous: Yes
Permitted: Yes
Wet space: Yes
Addition: No
Conversion: No

806 Cherry Circle, Orland, Glenn County, California, United States, 95963

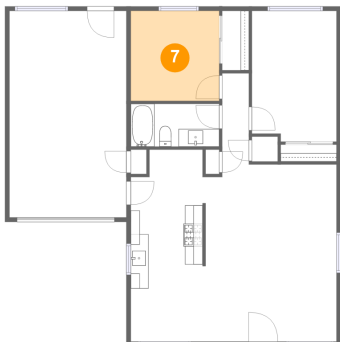
6 Floor 1 - Kitchen



Max Dimensions: 8'5" x 15'8"
Calculated Area: 124 sq. ft
Included: Yes

Heated: Yes
Finished: Yes
Enclosed: Yes
Contiguous: Yes
Permitted: Yes
Wet space: No
Addition: No
Conversion: No

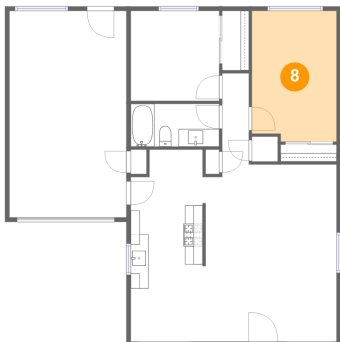
7 Floor 1 - Bedroom



Max Dimensions: 10'0" x 10'2"
Calculated Area: 101 sq. ft
Included: Yes

Heated: Yes
Finished: Yes
Enclosed: Yes
Contiguous: Yes
Permitted: Yes
Wet space: No
Addition: No
Conversion: No

8 Floor 1 - Primary Bedroom



Max Dimensions: 9'7" x 14'9"
Calculated Area: 138 sq. ft
Included: Yes

Heated: Yes
Finished: Yes
Enclosed: Yes
Contiguous: Yes
Permitted: Yes
Wet space: No
Addition: No
Conversion: No