

Home report

310 East 52nd Street, Ardsley Park, Savannah, Chatham County,
Georgia, United States, 31405



Total Area: 2300 sq. ft
Floor 1: 1583 sq. ft, Floor 2: 717 sq. ft
Excluded: Storage 70 sq. ft, Porch 145 sq. ft, Fireplace 9 sq. ft, Low ceiling 80 sq. ft, Walls: 191 sq. ft

Property summary

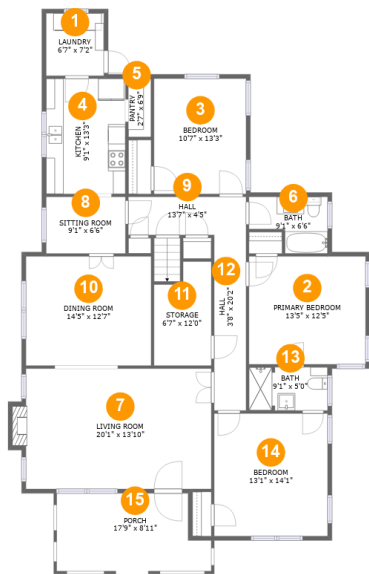
 **2** Floors

 **3** Bedrooms

 **2** Bathrooms

Home report

310 East 52nd Street, Ardsley Park, Savannah, Chatham County, Georgia, United States, 31405



Room dimensions

Floor 1 Total:1583sqft Excluded: 224sqft

#		Max Dimensions	sqft	Included
1	Laundry	6'7" x 7'2"	48 sq. ft	Yes
2	Primary Bedroom	13'5" x 12'5"	166 sq. ft	Yes
3	Bedroom	10'7" x 13'3"	140 sq. ft	Yes
4	Kitchen	9'1" x 13'3"	121 sq. ft	Yes
5	Pantry	2'7" x 6'9"	18 sq. ft	Yes
6	Bath	9'1" x 6'6"	47 sq. ft	Yes
7	Living Room	20'1" x 13'10"	302 sq. ft	Yes
8	Sitting Room	9'1" x 6'6"	59 sq. ft	Yes
9	Hall	13'7" x 4'5"	59 sq. ft	Yes
10	Dining Room	14'5" x 12'7"	181 sq. ft	Yes
11	Storage	6'7" x 12'0"	70 sq. ft	No

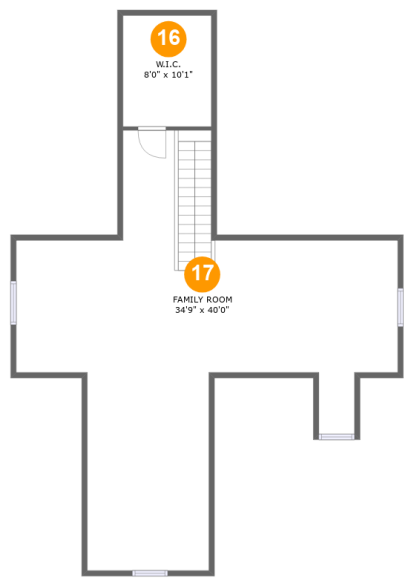
Home report

**310 East 52nd Street, Ardsley Park, Savannah, Chatham County,
Georgia, United States, 31405**

#		Max Dimensions	sqft	Included
12	Hall	3'8" x 20'2"	74 sq. ft	Yes
13	Bath	9'1" x 5'0"	45 sq. ft	Yes
14	Bedroom	13'1" x 14'1"	184 sq. ft	Yes
15	Porch	17'9" x 8'11"	145 sq. ft	No

Home report

310 East 52nd Street, Ardsley Park, Savannah, Chatham County,
Georgia, United States, 31405



Room dimensions

Floor 2 Total:717sqft Excluded: 80sqft

#		Max Dimensions	sqft	Included
16	W.I.C.	8'0" x 10'1"	66 sq. ft	Yes
17	Family Room	34'9" x 40'0"	649 sq. ft	Yes

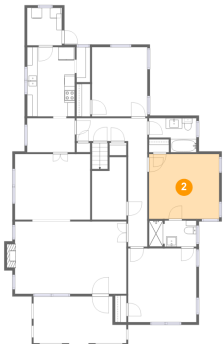
1 Floor 1 - Laundry



Max Dimensions: 6'7" x 7'2"
Calculated Area: 48 sq. ft
Included: Yes

Heated: Yes
Finished: Yes
Enclosed: Yes
Contiguous: Yes
Permitted: Yes
Wet space: No
Addition: No
Conversion: No

2 Floor 1 - Primary Bedroom

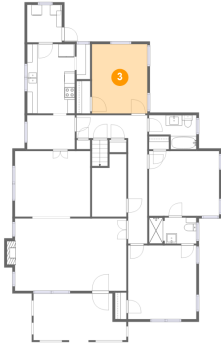


Max Dimensions: 13'5" x 12'5"
Calculated Area: 166 sq. ft
Included: Yes

Heated: Yes
Finished: Yes
Enclosed: Yes
Contiguous: Yes
Permitted: Yes
Wet space: No
Addition: No
Conversion: No

310 East 52nd Street, Ardsley Park, Savannah, Chatham County,
Georgia, United States, 31405

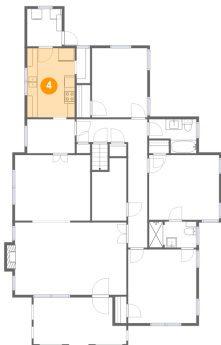
3 Floor 1 - Bedroom



Max Dimensions: 10'7" x 13'3"
Calculated Area: 140 sq. ft
Included: Yes

Heated: Yes
Finished: Yes
Enclosed: Yes
Contiguous: Yes
Permitted: Yes
Wet space: No
Addition: No
Conversion: No

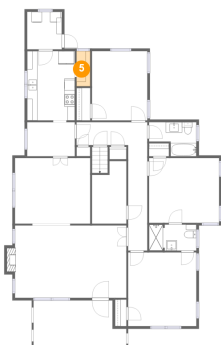
4 Floor 1 - Kitchen



Max Dimensions: 9'1" x 13'3"
Calculated Area: 121 sq. ft
Included: Yes

Heated: Yes
Finished: Yes
Enclosed: Yes
Contiguous: Yes
Permitted: Yes
Wet space: No
Addition: No
Conversion: No

5 Floor 1 - Pantry



Max Dimensions: 2'7" x 6'9"
Calculated Area: 18 sq. ft
Included: Yes

Heated: Yes
Finished: Yes
Enclosed: Yes
Contiguous: Yes
Permitted: Yes
Wet space: No
Addition: No
Conversion: No

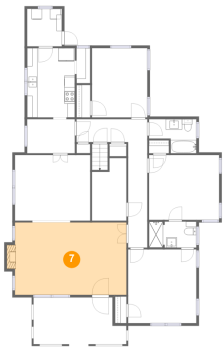
6 Floor 1 - Bath



Max Dimensions: 9'1" x 6'6"
Calculated Area: 47 sq. ft
Included: Yes

Heated: Yes
Finished: Yes
Enclosed: Yes
Contiguous: Yes
Permitted: Yes
Wet space: Yes
Addition: No
Conversion: No

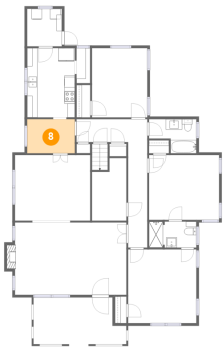
7 Floor 1 - Living Room



Max Dimensions: 20'1" x 13'10"
Calculated Area: 302 sq. ft
Included: Yes

Heated: Yes
Finished: Yes
Enclosed: Yes
Contiguous: Yes
Permitted: Yes
Wet space: No
Addition: No
Conversion: No

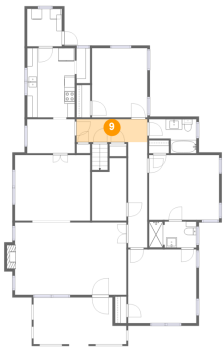
8 Floor 1 - Sitting Room



Max Dimensions: 9'1" x 6'6"
Calculated Area: 59 sq. ft
Included: Yes

Heated: Yes
Finished: Yes
Enclosed: Yes
Contiguous: Yes
Permitted: Yes
Wet space: No
Addition: No
Conversion: No

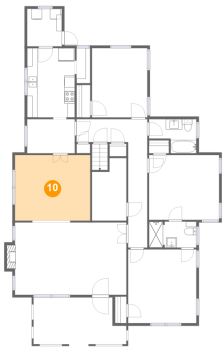
9 Floor 1 - Hall



Max Dimensions: 13'7" x 4'5"
Calculated Area: 59 sq. ft
Included: Yes

Heated: Yes
Finished: Yes
Enclosed: Yes
Contiguous: Yes
Permitted: Yes
Wet space: No
Addition: No
Conversion: No

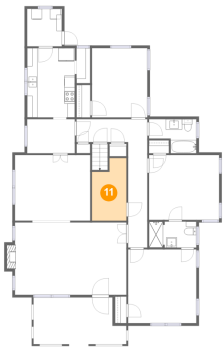
10 Floor 1 - Dining Room



Max Dimensions: 14'5" x 12'7"
Calculated Area: 181 sq. ft
Included: Yes

Heated: Yes
Finished: Yes
Enclosed: Yes
Contiguous: Yes
Permitted: Yes
Wet space: No
Addition: No
Conversion: No

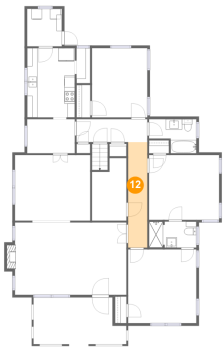
11 Floor 1 - Storage



Max Dimensions: 6'7" x 12'0"
Calculated Area: 70 sq. ft
Included: No

Heated: No
Finished: No
Enclosed: No
Contiguous: Yes
Permitted: Yes
Wet space: No
Addition: No
Conversion: No

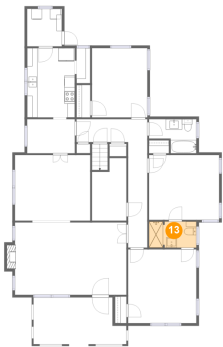
12 Floor 1 - Hall



Max Dimensions: 3'8" x 20'2"
Calculated Area: 74 sq. ft
Included: Yes

Heated: Yes
Finished: Yes
Enclosed: Yes
Contiguous: Yes
Permitted: Yes
Wet space: No
Addition: No
Conversion: No

13 Floor 1 - Bath



Max Dimensions: 9'1" x 5'0"
Calculated Area: 45 sq. ft
Included: Yes

Heated: Yes
Finished: Yes
Enclosed: Yes
Contiguous: Yes
Permitted: Yes
Wet space: Yes
Addition: No
Conversion: No

14 Floor 1 - Bedroom



Max Dimensions: 13'1" x 14'1"
Calculated Area: 184 sq. ft
Included: Yes

Heated: Yes
Finished: Yes
Enclosed: Yes
Contiguous: Yes
Permitted: Yes
Wet space: No
Addition: No
Conversion: No

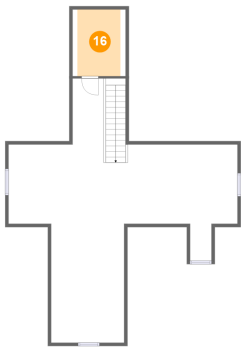
15 Floor 1 - Porch



Max Dimensions: 17'9" x 8'11"
Calculated Area: 145 sq. ft
Included: No

Heated: No
Finished: Yes
Enclosed: No
Contiguous: Yes
Permitted: Yes
Wet space: No
Addition: No
Conversion: No

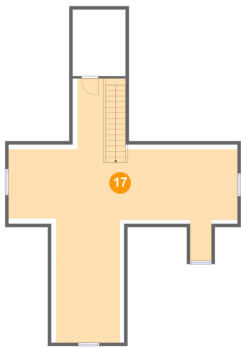
16 Floor 2 - W.I.C.



Max Dimensions: 8'0" x 10'1"
Calculated Area: 66 sq. ft
Included: Yes

Heated: Yes
Finished: Yes
Enclosed: Yes
Contiguous: Yes
Permitted: Yes
Wet space: No
Addition: No
Conversion: No

17 Floor 2 - Family Room



Max Dimensions: 34'9" x 40'0"
Calculated Area: 649 sq. ft
Included: Yes

Heated: Yes
Finished: Yes
Enclosed: Yes
Contiguous: Yes
Permitted: Yes
Wet space: No
Addition: No
Conversion: No