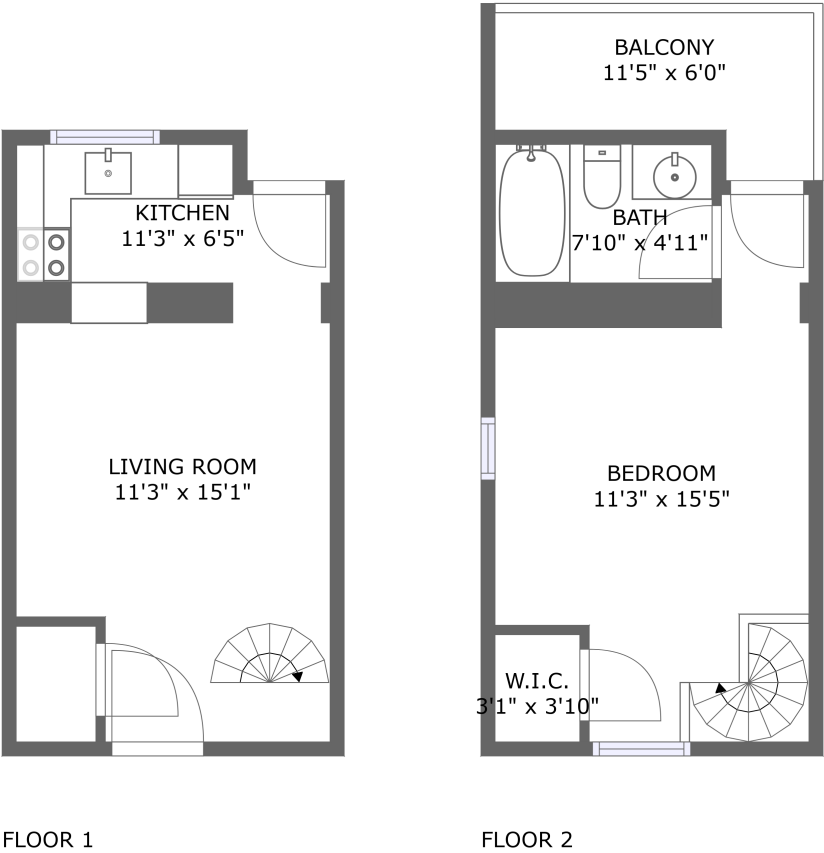


Home report

406 East Jones Lane, South Historic District, Savannah,
Chatham County, Georgia, United States, 31401



Total Area: 472 sq. ft
Floor 1: 236 sq. ft, Floor 2: 236 sq. ft
Excluded: Balcony 54 sq. ft, Walls: 70 sq. ft

Property summary

 **2** Floors

 **1** Bedrooms

 **1** Bathrooms

Home report

406 East Jones Lane, South Historic District, Savannah,
Chatham County, Georgia, United States, 31401



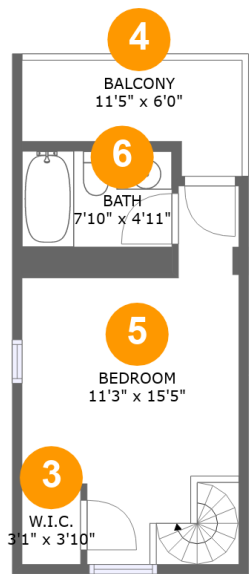
Room dimensions

Floor 1 Total:236sqft Excluded: 0sqft

#		Max Dimensions	sqft	Included
1	Kitchen	11'3" x 6'5"	66 sq. ft	Yes
2	Living Room	11'3" x 15'1"	155 sq. ft	Yes

Home report

406 East Jones Lane, South Historic District, Savannah,
Chatham County, Georgia, United States, 31401



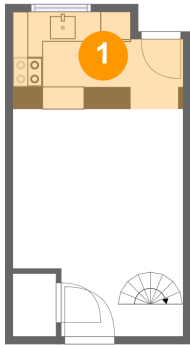
Room dimensions

Floor 2 Total:236sqft Excluded: 54sqft

#		Max Dimensions	sqft	Included
3	W.I.C.	3'1" x 3'10"	12 sq. ft	Yes
4	Balcony	11'5" x 6'0"	54 sq. ft	No
5	Bedroom	11'3" x 15'5"	169 sq. ft	Yes
6	Bath	7'10" x 4'11"	49 sq. ft	Yes

406 East Jones Lane, South Historic District, Savannah,
Chatham County, Georgia, United States, 31401

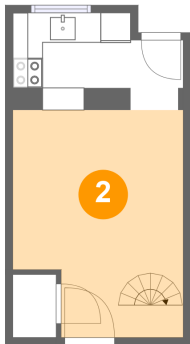
1 Floor 1 - Kitchen



Max Dimensions: 11'3" x 6'5"
Calculated Area: 66 sq. ft
Included: Yes

Heated: Yes
Finished: Yes
Enclosed: Yes
Contiguous: Yes
Permitted: Yes
Wet space: No
Addition: No
Conversion: No

2 Floor 1 - Living Room

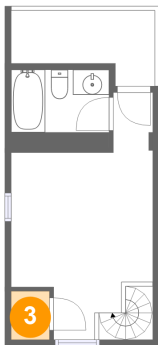


Max Dimensions: 11'3" x 15'1"
Calculated Area: 155 sq. ft
Included: Yes

Heated: Yes
Finished: Yes
Enclosed: Yes
Contiguous: Yes
Permitted: Yes
Wet space: No
Addition: No
Conversion: No

406 East Jones Lane, South Historic District, Savannah,
Chatham County, Georgia, United States, 31401

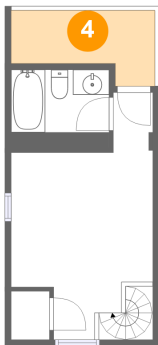
3 Floor 2 - W.I.C.



Max Dimensions: 3'1" x 3'10"
Calculated Area: 12 sq. ft
Included: Yes

Heated: Yes
Finished: Yes
Enclosed: Yes
Contiguous: Yes
Permitted: Yes
Wet space: No
Addition: No
Conversion: No

4 Floor 2 - Balcony



Max Dimensions: 11'5" x 6'0"
Calculated Area: 54 sq. ft
Included: No

Heated: No
Finished: Yes
Enclosed: No
Contiguous: Yes
Permitted: Yes
Wet space: No
Addition: No
Conversion: No

5 Floor 2 - Bedroom

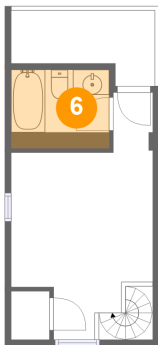


Max Dimensions: 11'3" x 15'5"
Calculated Area: 169 sq. ft
Included: Yes

Heated: Yes
Finished: Yes
Enclosed: Yes
Contiguous: Yes
Permitted: Yes
Wet space: No
Addition: No
Conversion: No

406 East Jones Lane, South Historic District, Savannah,
Chatham County, Georgia, United States, 31401

6 Floor 2 - Bath



Max Dimensions: 7'10" x 4'11"
Calculated Area: 49 sq. ft
Included: Yes

Heated: Yes
Finished: Yes
Enclosed: Yes
Contiguous: Yes
Permitted: Yes
Wet space: Yes
Addition: No
Conversion: No