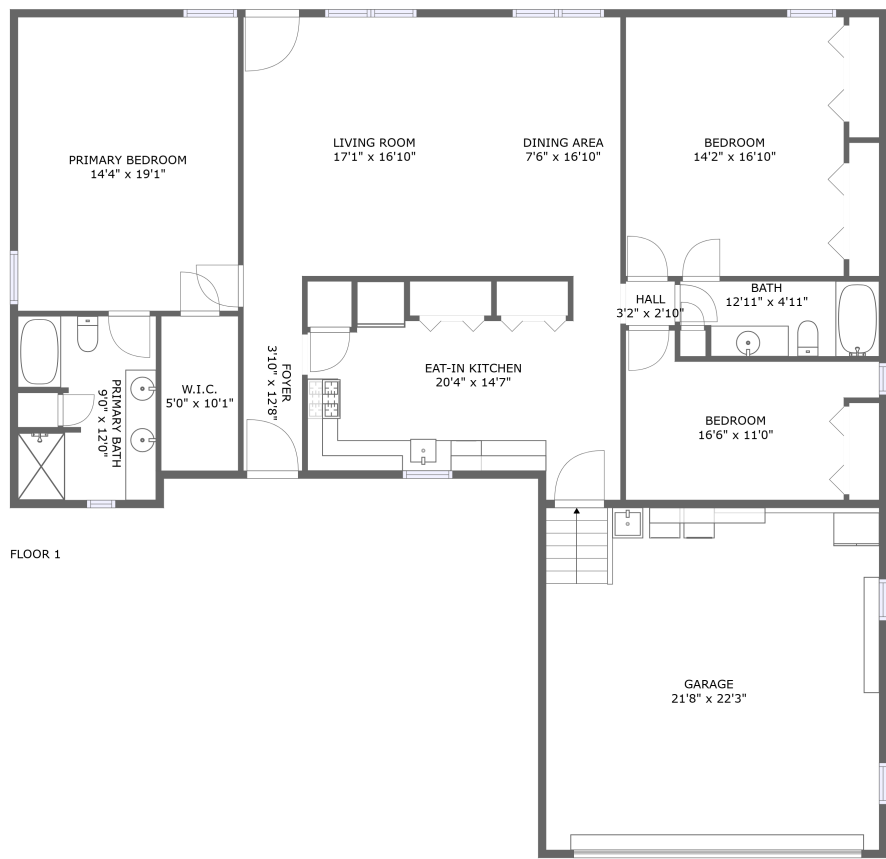


Home report

120 Pinetree Road, Midway, Liberty County, Georgia, United States, 31320




Total Area: 1712 sq. ft


Floor 1: 1712 sq. ft

Excluded: Garage 483 sq. ft, Walls: 125 sq. ft

Property summary

 1 Floors

 3 Bedrooms

 2 Bathrooms

 1 Garages

120 Pinetree Road, Midway, Liberty County, Georgia, United States, 31320



Total:1712sqft Excluded: 483sqft

Scan captured on Fri, 22 Aug 2025 15:09:41 GMT

Home report

120 Pinetree Road, Midway, Liberty County, Georgia, United States, 31320

#		Max Dimensions	sqft	Included
12	Bath	12'11" x 4'11"	59 sq. ft	Yes

120 Pinetree Road, Midway, Liberty County, Georgia, United States, 31320

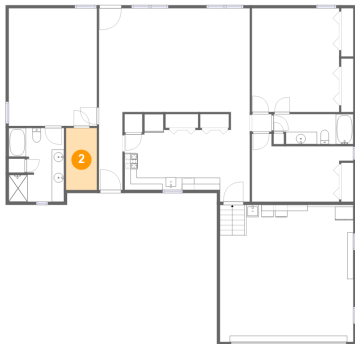
1 Floor 1 - Foyer



Max Dimensions: 3'10" x 12'8"
Calculated Area: 49 sq. ft
Included: Yes

Heated: Yes
Finished: Yes
Enclosed: Yes
Contiguous: Yes
Permitted: Yes
Wet space: No
Addition: No
Conversion: No

2 Floor 1 - W.I.C.



Max Dimensions: 5'0" x 10'1"
Calculated Area: 50 sq. ft
Included: Yes

Heated: Yes
Finished: Yes
Enclosed: Yes
Contiguous: Yes
Permitted: Yes
Wet space: No
Addition: No
Conversion: No

120 Pinetree Road, Midway, Liberty County, Georgia, United States, 31320

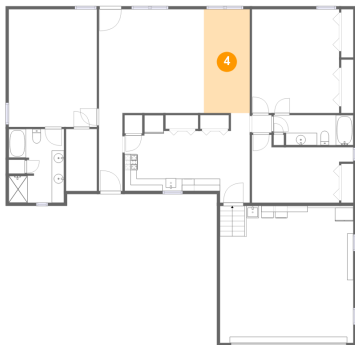
3 Floor 1 - Bedroom



Max Dimensions: 14'2" x 16'10"
Calculated Area: 239 sq. ft
Included: Yes

Heated: Yes
Finished: Yes
Enclosed: Yes
Contiguous: Yes
Permitted: Yes
Wet space: No
Addition: No
Conversion: No

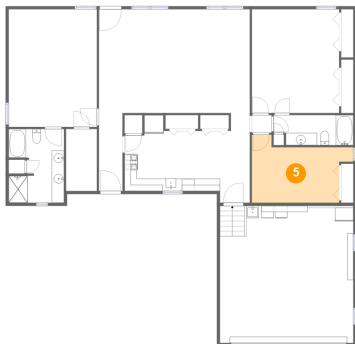
4 Floor 1 - Dining Area



Max Dimensions: 7'6" x 16'10"
Calculated Area: 126 sq. ft
Included: Yes

Heated: Yes
Finished: Yes
Enclosed: Yes
Contiguous: Yes
Permitted: Yes
Wet space: No
Addition: No
Conversion: No

5 Floor 1 - Bedroom



Max Dimensions: 16'6" x 11'0"
Calculated Area: 140 sq. ft
Included: Yes

Heated: Yes
Finished: Yes
Enclosed: Yes
Contiguous: Yes
Permitted: Yes
Wet space: No
Addition: No
Conversion: No

120 Pinetree Road, Midway, Liberty County, Georgia, United States, 31320

6 Floor 1 - Hall



Max Dimensions: 3'2" x 2'10"
Calculated Area: 9 sq. ft
Included: Yes

Heated: Yes
Finished: Yes
Enclosed: Yes
Contiguous: Yes
Permitted: Yes
Wet space: No
Addition: No
Conversion: No

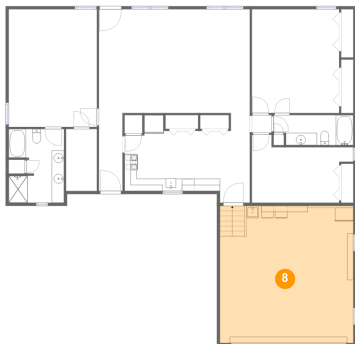
7 Floor 1 - Primary Bath



Max Dimensions: 9'0" x 12'0"
Calculated Area: 99 sq. ft
Included: Yes

Heated: Yes
Finished: Yes
Enclosed: Yes
Contiguous: Yes
Permitted: Yes
Wet space: Yes
Addition: No
Conversion: No

8 Floor 1 - Garage

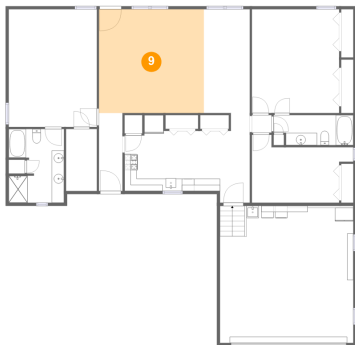


Max Dimensions: 21'8" x 22'3"
Calculated Area: 483 sq. ft
Included: No

Heated: No
Finished: No
Enclosed: Yes
Contiguous: Yes
Permitted: Yes
Wet space: No
Addition: No
Conversion: No

120 Pinetree Road, Midway, Liberty County, Georgia, United States, 31320

9 Floor 1 - Living Room



Max Dimensions: 17'1" x 16'10"
Calculated Area: 288 sq. ft
Included: Yes

Heated: Yes
Finished: Yes
Enclosed: Yes
Contiguous: Yes
Permitted: Yes
Wet space: No
Addition: No
Conversion: No

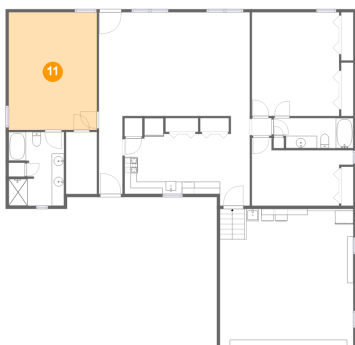
10 Floor 1 - Eat-in Kitchen



Max Dimensions: 20'4" x 14'7"
Calculated Area: 223 sq. ft
Included: Yes

Heated: Yes
Finished: Yes
Enclosed: Yes
Contiguous: Yes
Permitted: Yes
Wet space: No
Addition: No
Conversion: No

11 Floor 1 - Primary Bedroom



Max Dimensions: 14'4" x 19'1"
Calculated Area: 274 sq. ft
Included: Yes

Heated: Yes
Finished: Yes
Enclosed: Yes
Contiguous: Yes
Permitted: Yes
Wet space: No
Addition: No
Conversion: No

120 Pinetree Road, Midway, Liberty County, Georgia, United States, 31320

12 Floor 1 - Bath



Max Dimensions: 12'11" x 4'11"
Calculated Area: 59 sq. ft
Included: Yes

Heated: Yes
Finished: Yes
Enclosed: Yes
Contiguous: Yes
Permitted: Yes
Wet space: Yes
Addition: No
Conversion: No