

Home report

201 West Charlton Street, South Historic District, Savannah,
Chatham County, Georgia, United States, 31401



Total Area: 5858 sq. ft

Floor 1: 1691 sq. ft, Floor 2: 1650 sq. ft, Floor 3: 1269 sq. ft, Floor 4: 1248 sq. ft

Excluded: Utility 28 sq. ft, Porch 587 sq. ft, Covered patio 236 sq. ft, Balcony 452 sq. ft, Walls: 435 sq. ft

Property summary

 **4** Floors

 **7** Bedrooms

 **7** Bathrooms

 **1** Half baths

Home report

201 West Charlton Street, South Historic District, Savannah,
Chatham County, Georgia, United States, 31401



Room dimensions

Floor 1 Total:1691sqft Excluded: 445sqft

#		Max Dimensions	sqft	Included
1	Yard	21'7" x 11'10"	257 sq. ft	No
2	Room	11'4" x 14'11"	196 sq. ft	Yes
3	Kitchen	6'5" x 9'2"	59 sq. ft	Yes
4	Room	15'8" x 17'4"	271 sq. ft	Yes
5	Porch	11'7" x 5'5"	114 sq. ft	No
6	Porch	5'1" x 12'2"	67 sq. ft	No
7	Utility	9'4" x 3'1"	28 sq. ft	No
8	Room	8'1" x 20'3"	145 sq. ft	Yes
9	Covered Patio	23'9" x 9'11"	236 sq. ft	No
10	Bedroom	15'8" x 16'6"	259 sq. ft	Yes
11	Kitchen	9'11" x 11'4"	112 sq. ft	Yes

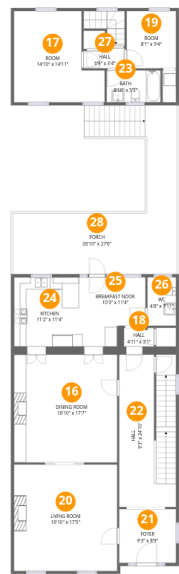
Home report

**201 West Charlton Street, South Historic District, Savannah,
Chatham County, Georgia, United States, 31401**

#		Max Dimensions	sqft	Included
12	Hall	9'4" x 21'2"	178 sq. ft	Yes
13	Bath	9'4" x 9'2"	85 sq. ft	Yes
14	Sitting Room	11'4" x 11'4"	128 sq. ft	Yes
15	Bath	4'7" x 11'4"	52 sq. ft	Yes

Home report

201 West Charlton Street, South Historic District, Savannah,
Chatham County, Georgia, United States, 31401



Room dimensions

Floor 2

Total:1650sqft

Excluded: 406sqft

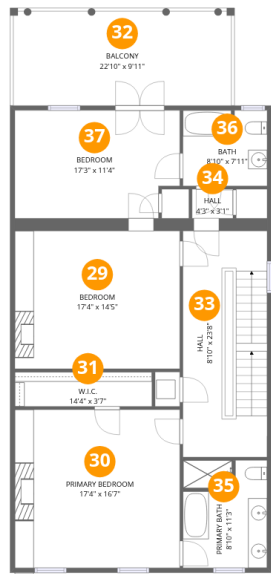
#		Max Dimensions	sqft	Included
16	Dining Room	16'10" x 17'7"	297 sq. ft	Yes
17	Room	14'10" x 14'11"	184 sq. ft	Yes
18	Hall	4'11" x 3'1"	17 sq. ft	Yes
19	Room	8'1" x 9'4"	75 sq. ft	Yes
20	Living Room	16'10" x 17'5"	293 sq. ft	Yes
21	Foyer	9'3" x 8'9"	81 sq. ft	Yes
22	Hall	9'3" x 24'10"	226 sq. ft	Yes
23	Bath	8'10" x 5'3"	46 sq. ft	Yes
24	Kitchen	11'2" x 11'4"	126 sq. ft	Yes
25	Breakfast Nook	10'3" x 11'4"	101 sq. ft	Yes
26	WC	4'8" x 7'11"	37 sq. ft	Yes

Home report

201 West Charlton Street, South Historic District, Savannah,
Chatham County, Georgia, United States, 31401

#		Max Dimensions	sqft	Included
27	Hall	6'9" x 3'4"	20 sq. ft	Yes
28	Porch	26'10" x 27'6"	406 sq. ft	No

201 West Charlton Street, South Historic District, Savannah,
Chatham County, Georgia, United States, 31401

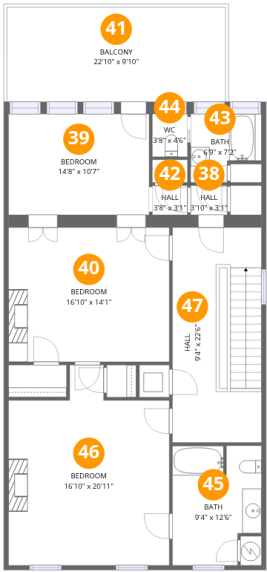


Room dimensions

Floor 3 Total:1269sqft Excluded: 226sqft

#		Max Dimensions	sqft	Included
29	Bedroom	17'4" x 14'5"	250 sq. ft	Yes
30	Primary Bedroom	17'4" x 16'7"	287 sq. ft	Yes
31	W.I.C.	14'4" x 3'7"	52 sq. ft	Yes
32	Balcony	22'10" x 9'11"	226 sq. ft	No
33	Hall	8'10" x 23'8"	209 sq. ft	Yes
34	Hall	4'3" x 3'1"	13 sq. ft	Yes
35	Primary Bath	8'10" x 11'3"	97 sq. ft	Yes
36	Bath	8'10" x 7'11"	69 sq. ft	Yes
37	Bedroom	17'3" x 11'4"	188 sq. ft	Yes

201 West Charlton Street, South Historic District, Savannah,
Chatham County, Georgia, United States, 31401



Room dimensions

Floor 4 Total:1248sqft Excluded: 226sqft

#		Max Dimensions	sqft	Included
38	Hall	3'10" x 3'1"	12 sq. ft	Yes
39	Bedroom	14'8" x 10'7"	155 sq. ft	Yes
40	Bedroom	16'10" x 14'1"	236 sq. ft	Yes
41	Balcony	22'10" x 9'10"	226 sq. ft	No
42	Hall	3'8" x 3'1"	11 sq. ft	Yes
43	Bath	6'9" x 7'2"	45 sq. ft	Yes
44	WC	3'8" x 4'6"	17 sq. ft	Yes
45	Bath	9'4" x 12'6"	107 sq. ft	Yes
46	Bedroom	16'10" x 20'11"	303 sq. ft	Yes
47	Hall	9'4" x 22'6"	209 sq. ft	Yes

201 West Charlton Street, South Historic District, Savannah,
Chatham County, Georgia, United States, 31401

1 Floor 1 - Yard



Max Dimensions: 21'7" x 11'10"
Calculated Area: 257 sq. ft
Included: No

Heated: No
Finished: No
Enclosed: No
Contiguous: Yes
Permitted: No
Wet space: No
Addition: No
Conversion: No

2 Floor 1 - Room



Max Dimensions: 11'4" x 14'11"
Calculated Area: 196 sq. ft
Included: Yes

Heated: Yes
Finished: Yes
Enclosed: Yes
Contiguous: Yes
Permitted: Yes
Wet space: No
Addition: No
Conversion: No

201 West Charlton Street, South Historic District, Savannah,
Chatham County, Georgia, United States, 31401

3 Floor 1 - Kitchen



Max Dimensions: 6'5" x 9'2"
Calculated Area: 59 sq. ft
Included: Yes

Heated: Yes
Finished: Yes
Enclosed: Yes
Contiguous: Yes
Permitted: Yes
Wet space: No
Addition: No
Conversion: No

4 Floor 1 - Room



Max Dimensions: 15'8" x 17'4"
Calculated Area: 271 sq. ft
Included: Yes

Heated: Yes
Finished: Yes
Enclosed: Yes
Contiguous: Yes
Permitted: Yes
Wet space: No
Addition: No
Conversion: No

5 Floor 1 - Porch



Max Dimensions: 11'7" x 5'5"
Calculated Area: 114 sq. ft
Included: No

Heated: No
Finished: No
Enclosed: No
Contiguous: Yes
Permitted: Yes
Wet space: No
Addition: No
Conversion: No

201 West Charlton Street, South Historic District, Savannah,
Chatham County, Georgia, United States, 31401

6 Floor 1 - Porch



Max Dimensions: 5'1" x 12'2"
Calculated Area: 67 sq. ft
Included: No

Heated: No
Finished: No
Enclosed: No
Contiguous: Yes
Permitted: Yes
Wet space: No
Addition: No
Conversion: No

7 Floor 1 - Utility



Max Dimensions: 9'4" x 3'1"
Calculated Area: 28 sq. ft
Included: No

Heated: Yes
Finished: No
Enclosed: Yes
Contiguous: Yes
Permitted: Yes
Wet space: No
Addition: No
Conversion: No

8 Floor 1 - Room



Max Dimensions: 8'1" x 20'3"
Calculated Area: 145 sq. ft
Included: Yes

Heated: Yes
Finished: Yes
Enclosed: Yes
Contiguous: Yes
Permitted: Yes
Wet space: No
Addition: No
Conversion: No

201 West Charlton Street, South Historic District, Savannah,
Chatham County, Georgia, United States, 31401

9 Floor 1 - Covered Patio



Max Dimensions: 23'9" x 9'11"
Calculated Area: 236 sq. ft
Included: No

Heated: No
Finished: No
Enclosed: No
Contiguous: Yes
Permitted: Yes
Wet space: No
Addition: No
Conversion: No

10 Floor 1 - Bedroom



Max Dimensions: 15'8" x 16'6"
Calculated Area: 259 sq. ft
Included: Yes

Heated: Yes
Finished: Yes
Enclosed: Yes
Contiguous: Yes
Permitted: Yes
Wet space: No
Addition: No
Conversion: No

11 Floor 1 - Kitchen



Max Dimensions: 9'11" x 11'4"
Calculated Area: 112 sq. ft
Included: Yes

Heated: Yes
Finished: Yes
Enclosed: Yes
Contiguous: Yes
Permitted: Yes
Wet space: No
Addition: No
Conversion: No

201 West Charlton Street, South Historic District, Savannah,
Chatham County, Georgia, United States, 31401

12 Floor 1 - Hall



Max Dimensions: 9'4" x 21'2"
Calculated Area: 178 sq. ft
Included: Yes

Heated: Yes
Finished: Yes
Enclosed: Yes
Contiguous: Yes
Permitted: Yes
Wet space: No
Addition: No
Conversion: No

13 Floor 1 - Bath



Max Dimensions: 9'4" x 9'2"
Calculated Area: 85 sq. ft
Included: Yes

Heated: Yes
Finished: Yes
Enclosed: Yes
Contiguous: Yes
Permitted: Yes
Wet space: Yes
Addition: No
Conversion: No

14 Floor 1 - Sitting Room



Max Dimensions: 11'4" x 11'4"
Calculated Area: 128 sq. ft
Included: Yes

Heated: Yes
Finished: Yes
Enclosed: Yes
Contiguous: Yes
Permitted: Yes
Wet space: No
Addition: No
Conversion: No

201 West Charlton Street, South Historic District, Savannah,
Chatham County, Georgia, United States, 31401

15 Floor 1 - Bath



Max Dimensions: 4'7" x 11'4"
Calculated Area: 52 sq. ft
Included: Yes

Heated: Yes
Finished: Yes
Enclosed: Yes
Contiguous: Yes
Permitted: Yes
Wet space: Yes
Addition: No
Conversion: No

16 Floor 2 - Dining Room



Max Dimensions: 16'10" x 17'7"
Calculated Area: 297 sq. ft
Included: Yes

Heated: Yes
Finished: Yes
Enclosed: Yes
Contiguous: Yes
Permitted: Yes
Wet space: No
Addition: No
Conversion: No

17 Floor 2 - Room



Max Dimensions: 14'10" x 14'11"
Calculated Area: 184 sq. ft
Included: Yes

Heated: Yes
Finished: Yes
Enclosed: Yes
Contiguous: Yes
Permitted: Yes
Wet space: No
Addition: No
Conversion: No

201 West Charlton Street, South Historic District, Savannah,
Chatham County, Georgia, United States, 31401

18 Floor 2 - Hall



Max Dimensions: 4'11" x 3'1"
Calculated Area: 17 sq. ft
Included: Yes

Heated: Yes
Finished: Yes
Enclosed: Yes
Contiguous: Yes
Permitted: Yes
Wet space: No
Addition: No
Conversion: No

19 Floor 2 - Room



Max Dimensions: 8'1" x 9'4"
Calculated Area: 75 sq. ft
Included: Yes

Heated: Yes
Finished: Yes
Enclosed: Yes
Contiguous: Yes
Permitted: Yes
Wet space: No
Addition: No
Conversion: No

20 Floor 2 - Living Room



Max Dimensions: 16'10" x 17'5"
Calculated Area: 293 sq. ft
Included: Yes

Heated: Yes
Finished: Yes
Enclosed: Yes
Contiguous: Yes
Permitted: Yes
Wet space: No
Addition: No
Conversion: No

201 West Charlton Street, South Historic District, Savannah,
Chatham County, Georgia, United States, 31401

21 Floor 2 - Foyer



Max Dimensions: 9'3" x 8'9"
Calculated Area: 81 sq. ft
Included: Yes

Heated: Yes
Finished: Yes
Enclosed: Yes
Contiguous: Yes
Permitted: Yes
Wet space: No
Addition: No
Conversion: No

22 Floor 2 - Hall



Max Dimensions: 9'3" x
24'10"
Calculated Area: 226 sq. ft
Included: Yes

Heated: Yes
Finished: Yes
Enclosed: Yes
Contiguous:
Yes
Permitted: Yes
Wet space: No
Addition: No
Conversion: No

23 Floor 2 - Bath



Max Dimensions: 8'10" x
5'3"
Calculated Area: 46 sq. ft
Included: Yes

Heated: Yes
Finished: Yes
Enclosed: Yes
Contiguous:
Yes
Permitted: Yes
Wet space: Yes
Addition: No
Conversion: No

201 West Charlton Street, South Historic District, Savannah,
Chatham County, Georgia, United States, 31401

24 Floor 2 - Kitchen



Max Dimensions: 11'2" x 11'4"
Calculated Area: 126 sq. ft
Included: Yes

Heated: Yes
Finished: Yes
Enclosed: Yes
Contiguous: Yes
Permitted: Yes
Wet space: No
Addition: No
Conversion: No

25 Floor 2 - Breakfast Nook



Max Dimensions: 10'3" x 11'4"
Calculated Area: 101 sq. ft
Included: Yes

Heated: Yes
Finished: Yes
Enclosed: Yes
Contiguous: Yes
Permitted: Yes
Wet space: No
Addition: No
Conversion: No

26 Floor 2 - WC



Max Dimensions: 4'8" x 7'11"
Calculated Area: 37 sq. ft
Included: Yes

Heated: Yes
Finished: Yes
Enclosed: Yes
Contiguous: Yes
Permitted: Yes
Wet space: Yes
Addition: No
Conversion: No

201 West Charlton Street, South Historic District, Savannah,
Chatham County, Georgia, United States, 31401

27 Floor 2 - Hall



Max Dimensions: 6'9" x 3'4"
Calculated Area: 20 sq. ft
Included: Yes

Heated: Yes
Finished: Yes
Enclosed: Yes
Contiguous: Yes
Permitted: Yes
Wet space: No
Addition: No
Conversion: No

28 Floor 2 - Porch



Max Dimensions: 26'10" x 27'6"
Calculated Area: 406 sq. ft
Included: No

Heated: No
Finished: No
Enclosed: No
Contiguous: Yes
Permitted: Yes
Wet space: No
Addition: No
Conversion: No

29 Floor 3 - Bedroom

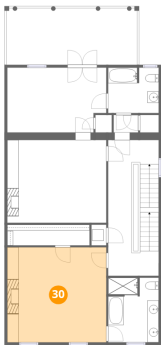


Max Dimensions: 17'4" x 14'5"
Calculated Area: 250 sq. ft
Included: Yes

Heated: Yes
Finished: Yes
Enclosed: Yes
Contiguous: Yes
Permitted: Yes
Wet space: No
Addition: No
Conversion: No

201 West Charlton Street, South Historic District, Savannah,
Chatham County, Georgia, United States, 31401

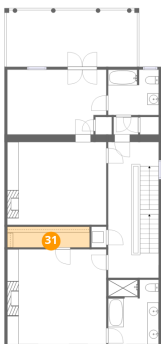
30 Floor 3 - Primary Bedroom



Max Dimensions: 17'4" x 16'7"
Calculated Area: 287 sq. ft
Included: Yes

Heated: Yes
Finished: Yes
Enclosed: Yes
Contiguous: Yes
Permitted: Yes
Wet space: No
Addition: No
Conversion: No

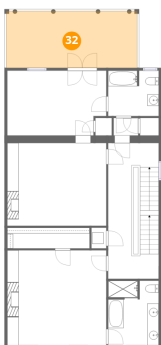
31 Floor 3 - W.I.C.



Max Dimensions: 14'4" x 3'7"
Calculated Area: 52 sq. ft
Included: Yes

Heated: Yes
Finished: Yes
Enclosed: Yes
Contiguous: Yes
Permitted: Yes
Wet space: No
Addition: No
Conversion: No

32 Floor 3 - Balcony



Max Dimensions: 22'10" x 9'11"
Calculated Area: 226 sq. ft
Included: No

Heated: No
Finished: No
Enclosed: No
Contiguous: Yes
Permitted: Yes
Wet space: No
Addition: No
Conversion: No

201 West Charlton Street, South Historic District, Savannah,
Chatham County, Georgia, United States, 31401

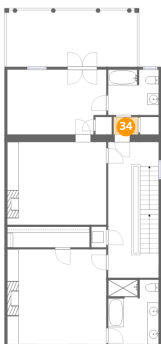
33 Floor 3 - Hall



Max Dimensions: 8'10" x 23'8"
Calculated Area: 209 sq. ft
Included: Yes

Heated: Yes
Finished: Yes
Enclosed: Yes
Contiguous: Yes
Permitted: Yes
Wet space: No
Addition: No
Conversion: No

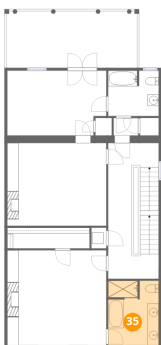
34 Floor 3 - Hall



Max Dimensions: 4'3" x 3'1"
Calculated Area: 13 sq. ft
Included: Yes

Heated: Yes
Finished: Yes
Enclosed: Yes
Contiguous: Yes
Permitted: Yes
Wet space: No
Addition: No
Conversion: No

35 Floor 3 - Primary Bath

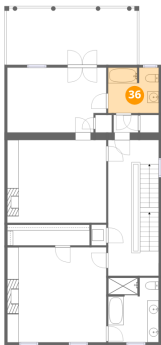


Max Dimensions: 8'10" x 11'3"
Calculated Area: 97 sq. ft
Included: Yes

Heated: Yes
Finished: Yes
Enclosed: Yes
Contiguous: Yes
Permitted: Yes
Wet space: Yes
Addition: No
Conversion: No

201 West Charlton Street, South Historic District, Savannah,
Chatham County, Georgia, United States, 31401

36 Floor 3 - Bath



Max Dimensions: 8'10" x 7'11"
Calculated Area: 69 sq. ft
Included: Yes

Heated: Yes
Finished: Yes
Enclosed: Yes
Contiguous: Yes
Permitted: Yes
Wet space: Yes
Addition: No
Conversion: No

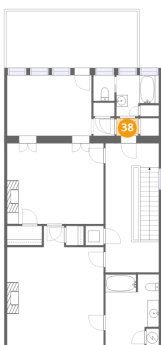
37 Floor 3 - Bedroom



Max Dimensions: 17'3" x 11'4"
Calculated Area: 188 sq. ft
Included: Yes

Heated: Yes
Finished: Yes
Enclosed: Yes
Contiguous: Yes
Permitted: Yes
Wet space: No
Addition: No
Conversion: No

38 Floor 4 - Hall



Max Dimensions: 3'10" x 3'1"
Calculated Area: 12 sq. ft
Included: Yes

Heated: Yes
Finished: Yes
Enclosed: Yes
Contiguous: Yes
Permitted: Yes
Wet space: No
Addition: No
Conversion: No

201 West Charlton Street, South Historic District, Savannah,
Chatham County, Georgia, United States, 31401

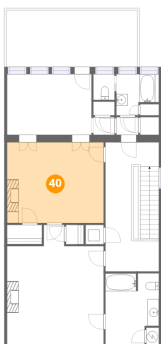
39 Floor 4 - Bedroom



Max Dimensions: 14'8" x 10'7"
Calculated Area: 155 sq. ft
Included: Yes

Heated: Yes
Finished: Yes
Enclosed: Yes
Contiguous: Yes
Permitted: Yes
Wet space: No
Addition: No
Conversion: No

40 Floor 4 - Bedroom



Max Dimensions: 16'10" x 14'1"
Calculated Area: 236 sq. ft
Included: Yes

Heated: Yes
Finished: Yes
Enclosed: Yes
Contiguous: Yes
Permitted: Yes
Wet space: No
Addition: No
Conversion: No

41 Floor 4 - Balcony

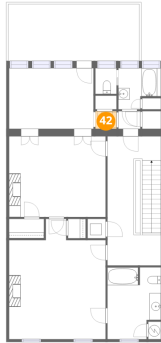


Max Dimensions: 22'10" x 9'10"
Calculated Area: 226 sq. ft
Included: No

Heated: No
Finished: No
Enclosed: No
Contiguous: Yes
Permitted: Yes
Wet space: No
Addition: No
Conversion: No

201 West Charlton Street, South Historic District, Savannah,
Chatham County, Georgia, United States, 31401

42 Floor 4 - Hall



Max Dimensions: 3'8" x 3'1"
Calculated Area: 11 sq. ft
Included: Yes

Heated: Yes
Finished: Yes
Enclosed: Yes
Contiguous: Yes
Permitted: Yes
Wet space: No
Addition: No
Conversion: No

43 Floor 4 - Bath



Max Dimensions: 6'9" x 7'2"
Calculated Area: 45 sq. ft
Included: Yes

Heated: Yes
Finished: Yes
Enclosed: Yes
Contiguous: Yes
Permitted: Yes
Wet space: Yes
Addition: No
Conversion: No

44 Floor 4 - WC



Max Dimensions: 3'8" x 4'6"
Calculated Area: 17 sq. ft
Included: Yes

Heated: Yes
Finished: Yes
Enclosed: Yes
Contiguous: Yes
Permitted: Yes
Wet space: No
Addition: No
Conversion: No

201 West Charlton Street, South Historic District, Savannah,
Chatham County, Georgia, United States, 31401

45 Floor 4 - Bath



Max Dimensions: 9'4" x 12'6"
Calculated Area: 107 sq. ft
Included: Yes

Heated: Yes
Finished: Yes
Enclosed: Yes
Contiguous: Yes
Permitted: Yes
Wet space: Yes
Addition: No
Conversion: No

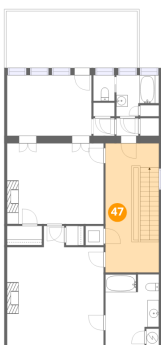
46 Floor 4 - Bedroom



Max Dimensions: 16'10" x 20'11"
Calculated Area: 303 sq. ft
Included: Yes

Heated: Yes
Finished: Yes
Enclosed: Yes
Contiguous: Yes
Permitted: Yes
Wet space: No
Addition: No
Conversion: No

47 Floor 4 - Hall



Max Dimensions: 9'4" x 22'6"
Calculated Area: 209 sq. ft
Included: Yes

Heated: Yes
Finished: Yes
Enclosed: Yes
Contiguous: Yes
Permitted: Yes
Wet space: No
Addition: No
Conversion: No