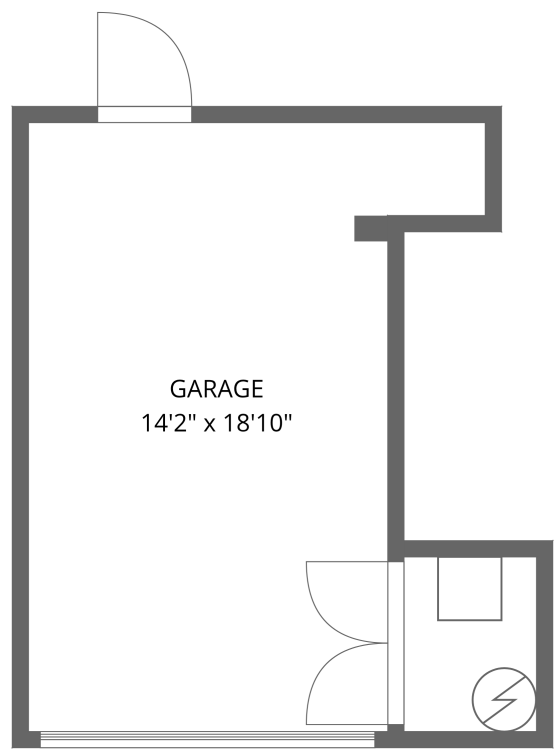


Home report

203 West Charlton Lane, South Historic District, Savannah,
Chatham County, Georgia, United States, 31401



FLOOR 1

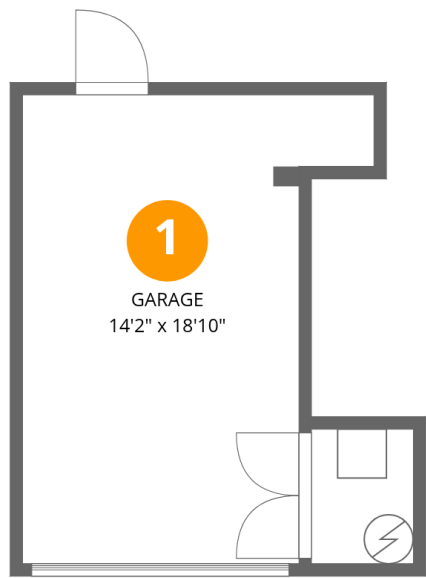
Total Area: 22 sq. ft
Floor 1: 22 sq. ft
Excluded: Garage 220 sq. ft, Walls: 42 sq. ft

Property summary

 **1**
Floors

 **1**
Garages

203 West Charlton Lane, South Historic District, Savannah,
Chatham County, Georgia, United States, 31401



Room dimensions

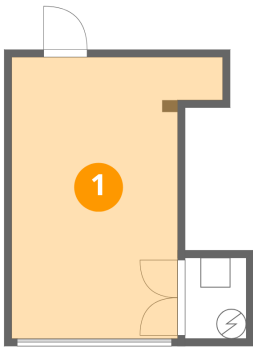
Floor 1 Total:22sqft Excluded: 220sqft

#		Max Dimensions	sqft	Included
1	Garage	14'2" x 18'10"	220 sq. ft	No

Home report

203 West Charlton Lane, South Historic District, Savannah,
Chatham County, Georgia, United States, 31401

1 Floor 1 - Garage



Max Dimensions: 14'2" x 18'10"
Calculated Area: 220 sq. ft
Included: No

Heated: No
Finished: No
Enclosed: Yes
Contiguous: Yes
Permitted: Yes
Wet space: No
Addition: No
Conversion: No