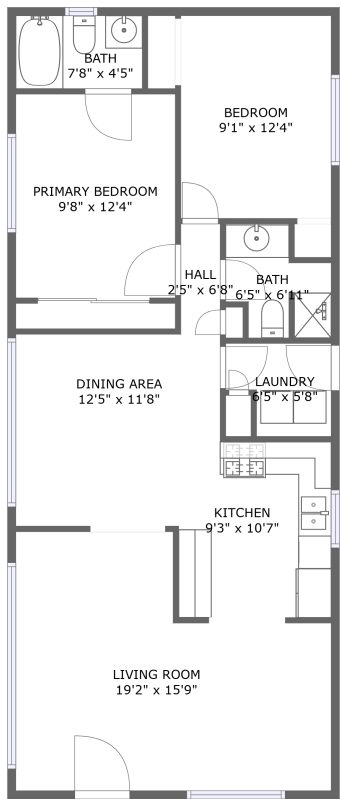


Home report

3535 Anza Way, Chico, Butte County, California, United States, 95973



FLOOR 1


Total Area: 899 sq. ft


Floor 1: 899 sq. ft

Excluded: Walls: 67 sq. ft

Property summary

 1 Floors

 2 Bedrooms

 2 Bathrooms

Home report

3535 Anza Way, Chico, Butte County, California, United States, 95973



Room dimensions

Floor 1

Total:899sqft   Excluded: 0sqft

#		Max Dimensions	sqft	Included
1	Bedroom	9'1" x 12'4"	112 sq. ft	Yes
2	Living Room	19'2" x 15'9"	247 sq. ft	Yes
3	Kitchen	9'3" x 10'7"	98 sq. ft	Yes
4	Bath	6'5" x 6'11"	34 sq. ft	Yes
5	Hall	2'5" x 6'8"	16 sq. ft	Yes
6	Bath	7'8" x 4'5"	34 sq. ft	Yes
7	Dining Area	12'5" x 11'8"	132 sq. ft	Yes
8	Laundry	6'5" x 5'8"	31 sq. ft	Yes
9	Primary Bedroom	9'8" x 12'4"	120 sq. ft	Yes

1 Floor 1 - Bedroom



Max Dimensions: 9'1" x 12'4"  
Calculated Area: 112 sq. ft  
Included: Yes

Heated: Yes  
Finished: Yes  
Enclosed: Yes  
Contiguous: Yes  
Permitted: Yes  
Wet space: No  
Addition: No  
Conversion: No

2 Floor 1 - Living Room



Max Dimensions: 19'2" x 15'9"  
Calculated Area: 247 sq. ft  
Included: Yes

Heated: Yes  
Finished: Yes  
Enclosed: Yes  
Contiguous: Yes  
Permitted: Yes  
Wet space: No  
Addition: No  
Conversion: No

## Home report

3535 Anza Way, Chico, Butte County, California, United States, 95973

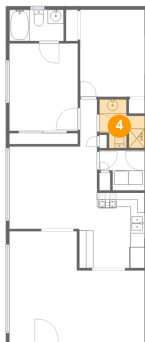
### 3 Floor 1 - Kitchen



Max Dimensions: 9'3" x 10'7"  
Calculated Area: 98 sq. ft  
Included: Yes

Heated: Yes  
Finished: Yes  
Enclosed: Yes  
Contiguous: Yes  
Permitted: Yes  
Wet space: No  
Addition: No  
Conversion: No

### 4 Floor 1 - Bath



Max Dimensions: 6'5" x 6'11"  
Calculated Area: 34 sq. ft  
Included: Yes

Heated: Yes  
Finished: Yes  
Enclosed: Yes  
Contiguous: Yes  
Permitted: Yes  
Wet space: Yes  
Addition: No  
Conversion: No

### 5 Floor 1 - Hall



Max Dimensions: 2'5" x 6'8"  
Calculated Area: 16 sq. ft  
Included: Yes

Heated: Yes  
Finished: Yes  
Enclosed: Yes  
Contiguous: Yes  
Permitted: Yes  
Wet space: No  
Addition: No  
Conversion: No

6 Floor 1 - Bath



Max Dimensions: 7'8" x 4'5"  
Calculated Area: 34 sq. ft  
Included: Yes

Heated: Yes  
Finished: Yes  
Enclosed: Yes  
Contiguous: Yes  
Permitted: Yes  
Wet space: Yes  
Addition: No  
Conversion: No

7 Floor 1 - Dining Area



Max Dimensions: 12'5" x 11'8"  
Calculated Area: 132 sq. ft  
Included: Yes

Heated: Yes  
Finished: Yes  
Enclosed: Yes  
Contiguous: Yes  
Permitted: Yes  
Wet space: No  
Addition: No  
Conversion: No

8 Floor 1 - Laundry



Max Dimensions: 6'5" x 5'8"  
Calculated Area: 31 sq. ft  
Included: Yes

Heated: Yes  
Finished: Yes  
Enclosed: Yes  
Contiguous: Yes  
Permitted: Yes  
Wet space: No  
Addition: No  
Conversion: No

3535 Anza Way, Chico, Butte County, California, United States, 95973

9 Floor 1 - Primary Bedroom



Max Dimensions: 9'8" x 12'4"  
Calculated Area: 120 sq. ft  
Included: Yes

Heated: Yes  
Finished: Yes  
Enclosed: Yes  
Contiguous: Yes  
Permitted: Yes  
Wet space: No  
Addition: No  
Conversion: No