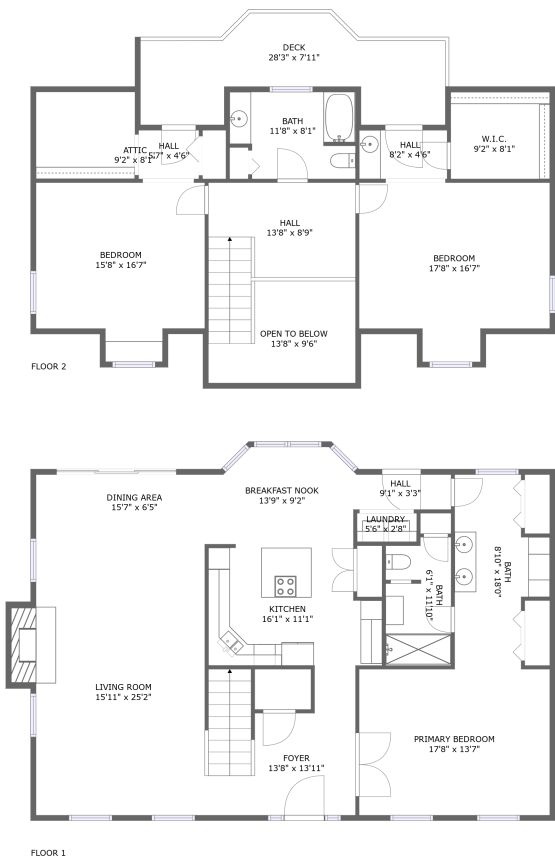


Home report

818 High Bluff Road, Rincon, Effingham County, Georgia, United States, 31326



Total Area: 2434 sq. ft

Floor 1: 1534 sq. ft, Floor 2: 900 sq. ft

Excluded: Fireplace 19 sq. ft, Deck 205 sq. ft, Attic 66 sq. ft, Open to below 104 sq. ft, Low ceiling 15 sq. ft, Walls: 165 sq. ft

Property summary

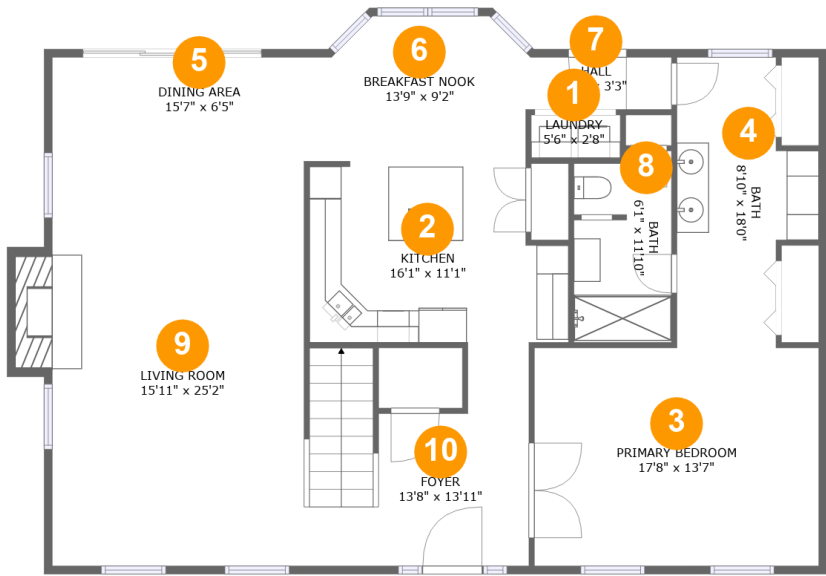
2 Floors

3 Bedrooms

2 Bathrooms

Home report

818 High Bluff Road, Rincon, Effingham County, Georgia, United States, 31326



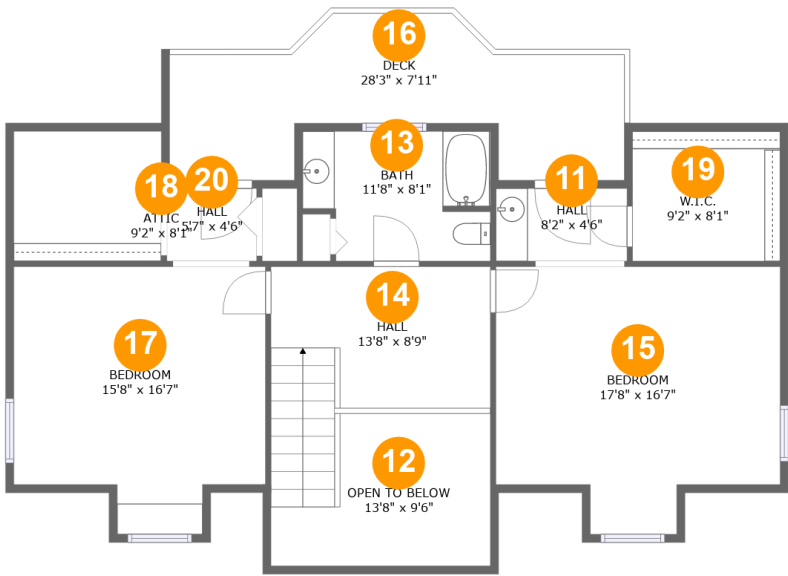
Room dimensions

Floor 1 Total:1534sqft    Excluded: 19sqft

#		Max Dimensions	sqft	Included
1	Laundry	5'6" x 2'8"	15 sq. ft	Yes
2	Kitchen	16'1" x 11'1"	165 sq. ft	Yes
3	Primary Bedroom	17'8" x 13'7"	239 sq. ft	Yes
4	Bath	8'10" x 18'0"	126 sq. ft	Yes
5	Dining Area	15'7" x 6'5"	101 sq. ft	Yes
6	Breakfast Nook	13'9" x 9'2"	116 sq. ft	Yes
7	Hall	9'1" x 3'3"	29 sq. ft	Yes
8	Bath	6'1" x 11'10"	69 sq. ft	Yes
9	Living Room	15'11" x 25'2"	412 sq. ft	Yes
10	Foyer	13'8" x 13'11"	161 sq. ft	Yes

Home report

818 High Bluff Road, Rincon, Effingham County, Georgia, United States, 31326



Room dimensions

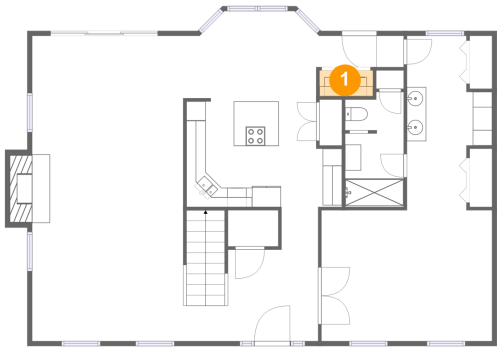
Floor 2

Total:900sqft

Excluded: 390sqft

#		Max Dimensions	sqft	Included
11	Hall	8'2" x 4'6"	37 sq. ft	Yes
12	Open To Below	13'8" x 9'6"	104 sq. ft	No
13	Bath	11'8" x 8'1"	86 sq. ft	Yes
14	Hall	13'8" x 8'9"	149 sq. ft	Yes
15	Bedroom	17'8" x 16'7"	256 sq. ft	Yes
16	Deck	28'3" x 7'11"	205 sq. ft	No
17	Bedroom	15'8" x 16'7"	228 sq. ft	Yes
18	Attic	9'2" x 8'1"	66 sq. ft	No
19	W.I.C.	9'2" x 8'1"	67 sq. ft	Yes
20	Hall	5'7" x 4'6"	25 sq. ft	Yes

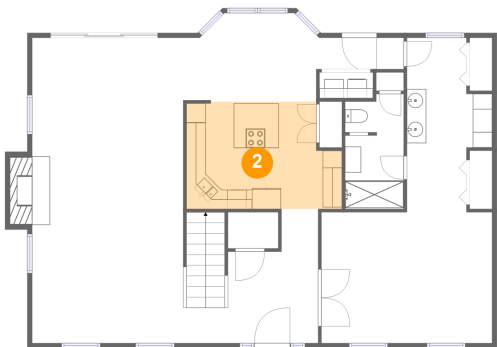
1 Floor 1 - Laundry



Max Dimensions: 5'6" x 2'8"  
Calculated Area: 15 sq. ft  
Included: Yes

Heated: Yes  
Finished: Yes  
Enclosed: Yes  
Contiguous: Yes  
Permitted: Yes  
Wet space: No  
Addition: No  
Conversion: No

2 Floor 1 - Kitchen



Max Dimensions: 16'1" x 11'1"  
Calculated Area: 165 sq. ft  
Included: Yes

Heated: Yes  
Finished: Yes  
Enclosed: Yes  
Contiguous: Yes  
Permitted: Yes  
Wet space: No  
Addition: No  
Conversion: No

3 Floor 1 - Primary Bedroom



Max Dimensions: 17'8" x 13'7"  
Calculated Area: 239 sq. ft  
Included: Yes

Heated: Yes  
Finished: Yes  
Enclosed: Yes  
Contiguous: Yes  
Permitted: Yes  
Wet space: No  
Addition: No  
Conversion: No

4 Floor 1 - Bath



Max Dimensions: 8'10" x 18'0"  
Calculated Area: 126 sq. ft  
Included: Yes

Heated: Yes  
Finished: Yes  
Enclosed: Yes  
Contiguous: Yes  
Permitted: Yes  
Wet space: Yes  
Addition: No  
Conversion: No

5 Floor 1 - Dining Area

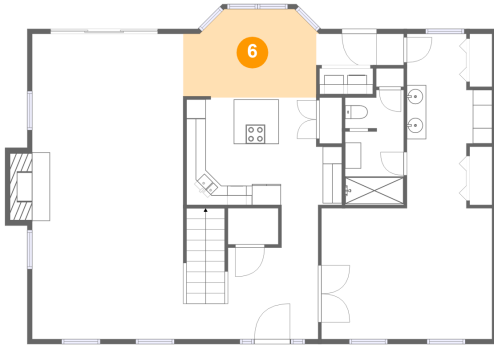


Max Dimensions: 15'7" x 6'5"  
Calculated Area: 101 sq. ft  
Included: Yes

Heated: Yes  
Finished: Yes  
Enclosed: Yes  
Contiguous: Yes  
Permitted: Yes  
Wet space: No  
Addition: No  
Conversion: No

818 High Bluff Road, Rincon, Effingham County, Georgia, United States, 31326

## 6 Floor 1 - Breakfast Nook



Max Dimensions: 13'9" x 9'2"  
Calculated Area: 116 sq. ft  
Included: Yes

Heated: Yes  
Finished: Yes  
Enclosed: Yes  
Contiguous: Yes  
Permitted: Yes  
Wet space: No  
Addition: No  
Conversion: No

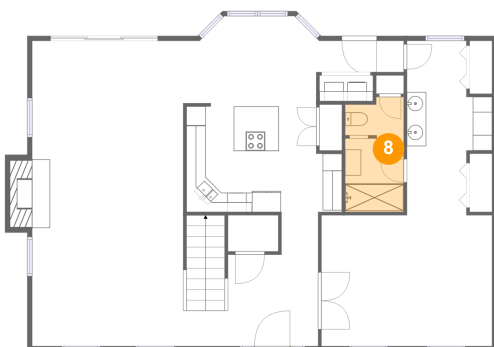
## 7 Floor 1 - Hall



Max Dimensions: 9'1" x 3'3"  
Calculated Area: 29 sq. ft  
Included: Yes

Heated: Yes  
Finished: Yes  
Enclosed: Yes  
Contiguous: Yes  
Permitted: Yes  
Wet space: No  
Addition: No  
Conversion: No

## 8 Floor 1 - Bath

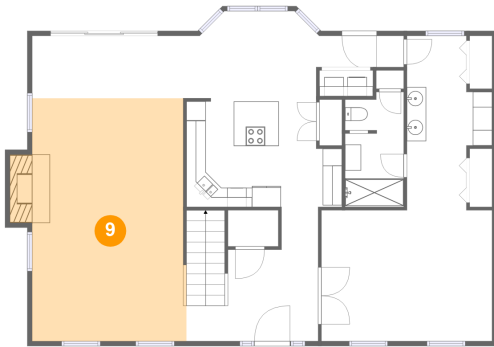


Max Dimensions: 6'1" x 11'10"  
Calculated Area: 69 sq. ft  
Included: Yes

Heated: Yes  
Finished: Yes  
Enclosed: Yes  
Contiguous: Yes  
Permitted: Yes  
Wet space: Yes  
Addition: No  
Conversion: No

818 High Bluff Road, Rincon, Effingham County, Georgia, United States, 31326

## 9 Floor 1 - Living Room



Max Dimensions: 15'11" x 25'2"  
Calculated Area: 412 sq. ft  
Included: Yes

Heated: Yes  
Finished: Yes  
Enclosed: Yes  
Contiguous: Yes  
Permitted: Yes  
Wet space: No  
Addition: No  
Conversion: No

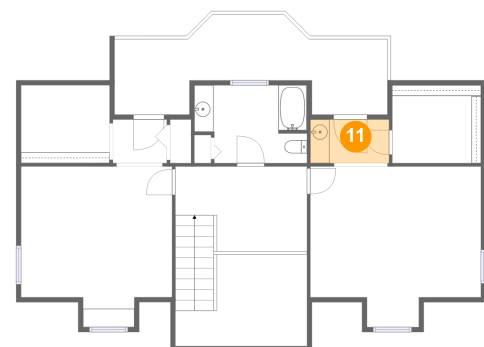
## 10 Floor 1 - Foyer



Max Dimensions: 13'8" x 13'11"  
Calculated Area: 161 sq. ft  
Included: Yes

Heated: Yes  
Finished: Yes  
Enclosed: Yes  
Contiguous: Yes  
Permitted: Yes  
Wet space: No  
Addition: No  
Conversion: No

## 11 Floor 2 - Hall

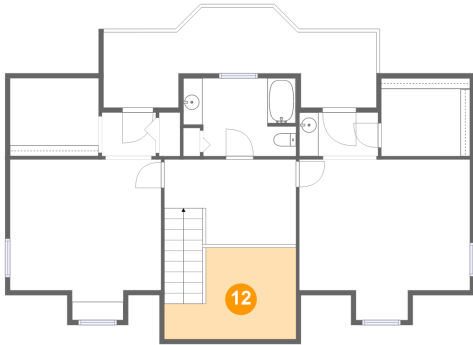


Max Dimensions: 8'2" x 4'6"  
Calculated Area: 37 sq. ft  
Included: Yes

Heated: Yes  
Finished: Yes  
Enclosed: Yes  
Contiguous: Yes  
Permitted: Yes  
Wet space: No  
Addition: No  
Conversion: No

818 High Bluff Road, Rincon, Effingham County, Georgia, United States, 31326

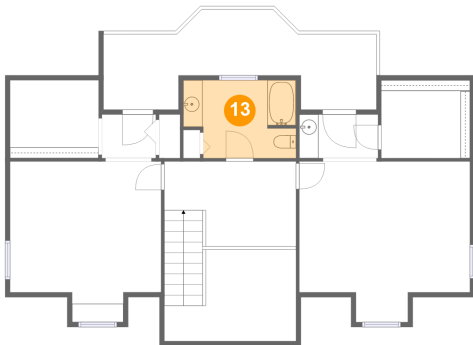
## 12 Floor 2 - Open To Below



Max Dimensions: 13'8" x 9'6"  
Calculated Area: 104 sq. ft  
Included: No

Heated: No  
Finished: No  
Enclosed: No  
Contiguous: Yes  
Permitted: No  
Wet space: No  
Addition: No  
Conversion: No

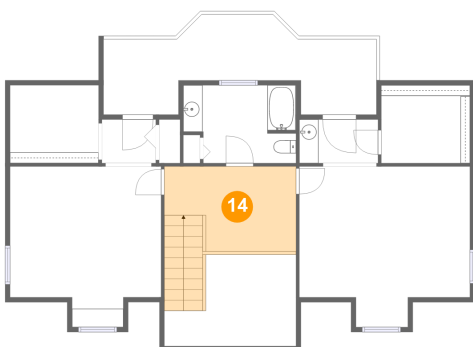
## 13 Floor 2 - Bath



Max Dimensions: 11'8" x 8'1"  
Calculated Area: 86 sq. ft  
Included: Yes

Heated: Yes  
Finished: Yes  
Enclosed: Yes  
Contiguous: Yes  
Permitted: Yes  
Wet space: Yes  
Addition: No  
Conversion: No

## 14 Floor 2 - Hall

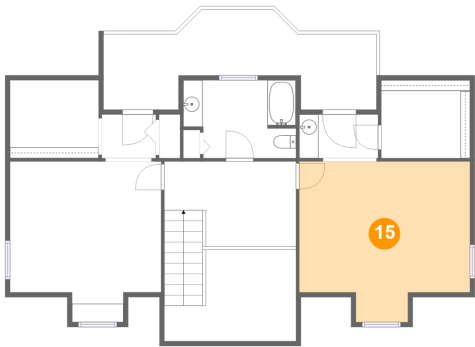


Max Dimensions: 13'8" x 8'9"  
Calculated Area: 149 sq. ft  
Included: Yes

Heated: Yes  
Finished: Yes  
Enclosed: Yes  
Contiguous: Yes  
Permitted: Yes  
Wet space: No  
Addition: No  
Conversion: No



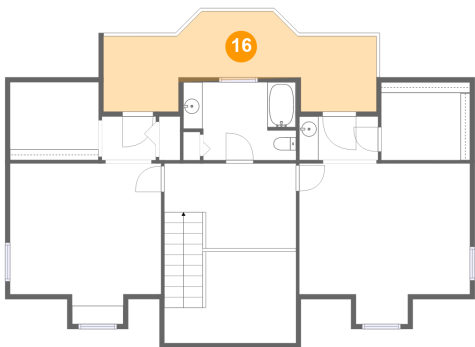
15 Floor 2 - Bedroom



Max Dimensions: 17'8" x 16'7"  
Calculated Area: 256 sq. ft  
Included: Yes

Heated: Yes  
Finished: Yes  
Enclosed: Yes  
Contiguous: Yes  
Permitted: Yes  
Wet space: No  
Addition: No  
Conversion: No

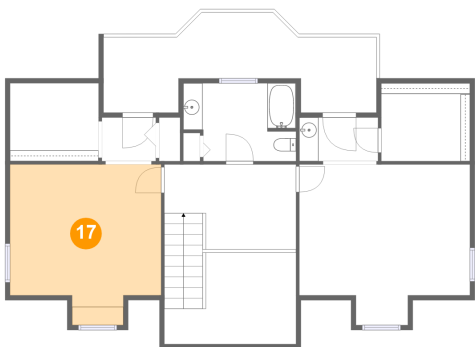
16 Floor 2 - Deck



Max Dimensions: 28'3" x 7'11"  
Calculated Area: 205 sq. ft  
Included: No

Heated: No  
Finished: Yes  
Enclosed: No  
Contiguous: Yes  
Permitted: Yes  
Wet space: No  
Addition: No  
Conversion: No

17 Floor 2 - Bedroom

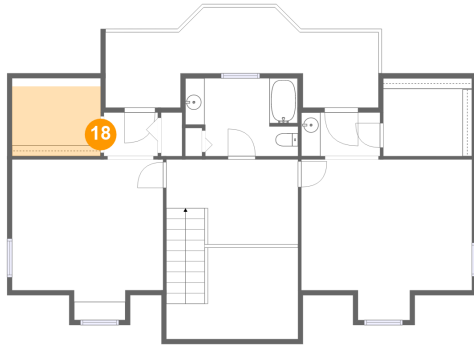


Max Dimensions: 15'8" x 16'7"  
Calculated Area: 228 sq. ft  
Included: Yes

Heated: Yes  
Finished: Yes  
Enclosed: Yes  
Contiguous: Yes  
Permitted: Yes  
Wet space: No  
Addition: No  
Conversion: No

818 High Bluff Road, Rincon, Effingham County, Georgia, United States, 31326

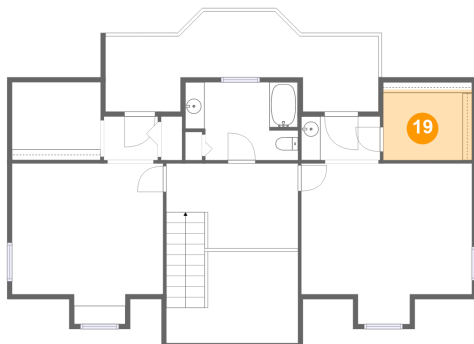
## 18 Floor 2 - Attic



Max Dimensions: 9'2" x 8'1"  
Calculated Area: 66 sq. ft  
Included: No

Heated: No  
Finished: No  
Enclosed: Yes  
Contiguous: Yes  
Permitted: Yes  
Wet space: No  
Addition: No  
Conversion: No

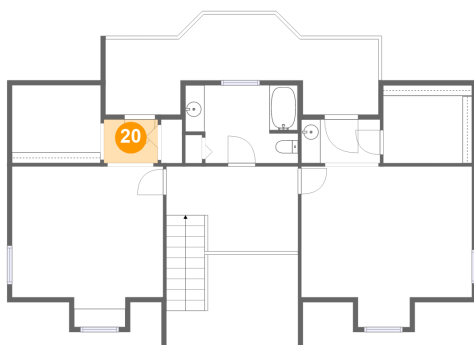
## 19 Floor 2 - W.I.C.



Max Dimensions: 9'2" x 8'1"  
Calculated Area: 67 sq. ft  
Included: Yes

Heated: Yes  
Finished: Yes  
Enclosed: Yes  
Contiguous: Yes  
Permitted: Yes  
Wet space: No  
Addition: No  
Conversion: No

## 20 Floor 2 - Hall



Max Dimensions: 5'7" x 4'6"  
Calculated Area: 25 sq. ft  
Included: Yes

Heated: Yes  
Finished: Yes  
Enclosed: Yes  
Contiguous: Yes  
Permitted: Yes  
Wet space: No  
Addition: No  
Conversion: No