

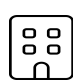
Home data report

501 East 34th Street, Midtown, Savannah, Chatham County,  
Georgia, United States, 31401



**Total Area: 1840 sq. ft**  
1st Floor: 920 sq. ft, 2nd Floor: 920 sq. ft  
Excluded: Walls: 134 sq. ft

Property summary

 **2** Floors

 **3** Bedrooms

 **2** Bathrooms

 **1** Half baths

501 East 34th Street, Midtown, Savannah, Chatham County,  
Georgia, United States, 31401

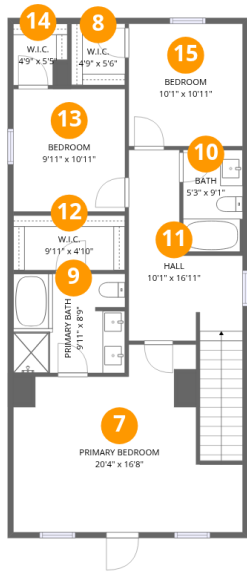


Room dimensions

Floor 1 Total:920sqft   Excluded: 0sqft

#		Dimensions	sqft	Counted as living area
1	Kitchen	14'0" x 15'5"	214 sq. ft	Yes
2	Dining Area	6'5" x 9'1"	58 sq. ft	Yes
3	Family Room	20'4" x 9'1"	185 sq. ft	Yes
4	Bath	3'10" x 7'3"	28 sq. ft	Yes
5	Laundry	6'1" x 5'11"	36 sq. ft	Yes
6	Living Room	20'4" x 20'4"	380 sq. ft	Yes

501 East 34th Street, Midtown, Savannah, Chatham County,  
Georgia, United States, 31401



Room dimensions

Floor 2 Total:920sqft   Excluded: 0sqft

#		Dimensions	sqft	Counted as living area
7	Primary Bedroom	20'4" x 16'8"	255 sq. ft	Yes
8	W.I.C.	4'9" x 5'6"	26 sq. ft	Yes
9	Primary Bath	9'11" x 8'9"	86 sq. ft	Yes
10	Bath	5'3" x 9'1"	48 sq. ft	Yes
11	Hall	10'1" x 16'11"	158 sq. ft	Yes
12	W.I.C.	9'11" x 4'10"	48 sq. ft	Yes
13	Bedroom	9'11" x 10'11"	108 sq. ft	Yes
14	W.I.C.	4'9" x 5'5"	23 sq. ft	Yes
15	Bedroom	10'1" x 10'11"	110 sq. ft	Yes

501 East 34th Street, Midtown, Savannah, Chatham County,  
Georgia, United States, 31401

**1 Floor 1 - Kitchen**



Dimensions: 14'0" x 15'5"  
Area: 214 sq. ft  
Counted as living area: Yes

Heated: Yes  
Finished: Yes  
Enclosed: Yes  
Contiguous: Yes  
Permitted: Yes  
Wet space: No  
Addition: No  
Conversion: No

**2 Floor 1 - Dining Area**

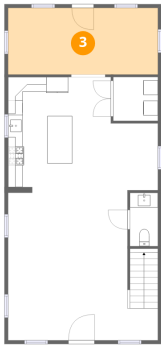


Dimensions: 6'5" x 9'1"  
Area: 58 sq. ft  
Counted as living area: Yes

Heated: Yes  
Finished: Yes  
Enclosed: Yes  
Contiguous: Yes  
Permitted: Yes  
Wet space: No  
Addition: No  
Conversion: No

501 East 34th Street, Midtown, Savannah, Chatham County,  
Georgia, United States, 31401

3 Floor 1 - Family Room



Dimensions: 20'4" x 9'1"  
Area: 185 sq. ft  
Counted as living area: Yes

Heated: Yes  
Finished: Yes  
Enclosed: Yes  
Contiguous: Yes  
Permitted: Yes  
Wet space: No  
Addition: No  
Conversion: No

4 Floor 1 - Bath



Dimensions: 3'10" x 7'3"  
Area: 28 sq. ft  
Counted as living area: Yes

Heated: Yes  
Finished: Yes  
Enclosed: Yes  
Contiguous: Yes  
Permitted: Yes  
Wet space: Yes  
Addition: No  
Conversion: No

5 Floor 1 - Laundry

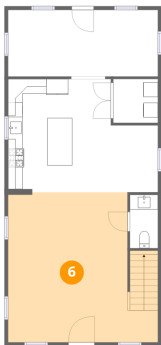


Dimensions: 6'1" x 5'11"  
Area: 36 sq. ft  
Counted as living area: Yes

Heated: Yes  
Finished: Yes  
Enclosed: Yes  
Contiguous: Yes  
Permitted: Yes  
Wet space: No  
Addition: No  
Conversion: No

501 East 34th Street, Midtown, Savannah, Chatham County,  
Georgia, United States, 31401

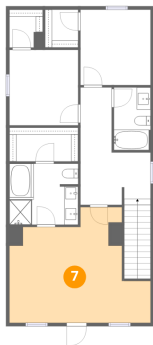
6 Floor 1 - Living Room



Dimensions: 20'4" x 20'4"  
Area: 380 sq. ft  
Counted as living area: Yes

Heated: Yes  
Finished: Yes  
Enclosed: Yes  
Contiguous: Yes  
Permitted: Yes  
Wet space: No  
Addition: No  
Conversion: No

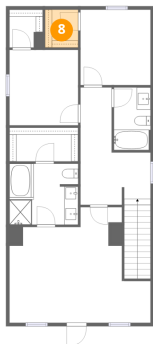
7 Floor 2 - Primary Bedroom



Dimensions: 20'4" x 16'8"  
Area: 255 sq. ft  
Counted as living area: Yes

Heated: Yes  
Finished: Yes  
Enclosed: Yes  
Contiguous: Yes  
Permitted: Yes  
Wet space: No  
Addition: No  
Conversion: No

8 Floor 2 - W.I.C.



Dimensions: 4'9" x 5'6"  
Area: 26 sq. ft  
Counted as living area: Yes

Heated: Yes  
Finished: Yes  
Enclosed: Yes  
Contiguous: Yes  
Permitted: Yes  
Wet space: No  
Addition: No  
Conversion: No

501 East 34th Street, Midtown, Savannah, Chatham County,  
Georgia, United States, 31401

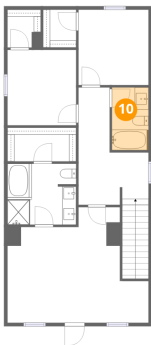
9 Floor 2 - Primary Bath



Dimensions: 9'11" x 8'9"  
Area: 86 sq. ft  
Counted as living area: Yes

Heated: Yes  
Finished: Yes  
Enclosed: Yes  
Contiguous: Yes  
Permitted: Yes  
Wet space: Yes  
Addition: No  
Conversion: No

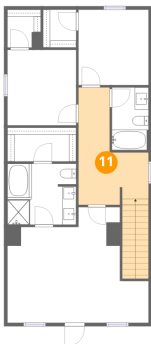
10 Floor 2 - Bath



Dimensions: 5'3" x 9'1"  
Area: 48 sq. ft  
Counted as living area: Yes

Heated: Yes  
Finished: Yes  
Enclosed: Yes  
Contiguous: Yes  
Permitted: Yes  
Wet space: Yes  
Addition: No  
Conversion: No

11 Floor 2 - Hall



Dimensions: 10'1" x 16'11"  
Area: 158 sq. ft  
Counted as living area: Yes

Heated: Yes  
Finished: Yes  
Enclosed: Yes  
Contiguous: Yes  
Permitted: Yes  
Wet space: No  
Addition: No  
Conversion: No

501 East 34th Street, Midtown, Savannah, Chatham County,  
Georgia, United States, 31401

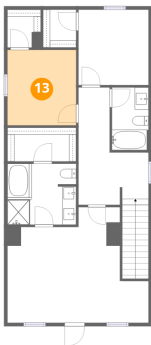
12 Floor 2 - W.I.C.



Dimensions: 9'11" x 4'10"  
Area: 48 sq. ft  
Counted as living area: Yes

Heated: Yes  
Finished: Yes  
Enclosed: Yes  
Contiguous: Yes  
Permitted: Yes  
Wet space: No  
Addition: No  
Conversion: No

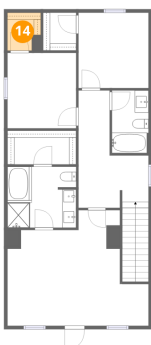
13 Floor 2 - Bedroom



Dimensions: 9'11" x 10'11"  
Area: 108 sq. ft  
Counted as living area: Yes

Heated: Yes  
Finished: Yes  
Enclosed: Yes  
Contiguous: Yes  
Permitted: Yes  
Wet space: No  
Addition: No  
Conversion: No

14 Floor 2 - W.I.C.

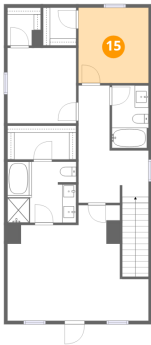


Dimensions: 4'9" x 5'5"  
Area: 23 sq. ft  
Counted as living area: Yes

Heated: Yes  
Finished: Yes  
Enclosed: Yes  
Contiguous: Yes  
Permitted: Yes  
Wet space: No  
Addition: No  
Conversion: No

501 East 34th Street, Midtown, Savannah, Chatham County,  
Georgia, United States, 31401

**15** Floor 2 - Bedroom



Dimensions: 10'1" x 10'11"  
Area: 110 sq. ft  
Counted as living area: Yes

Heated: Yes  
Finished: Yes  
Enclosed: Yes  
Contiguous: Yes  
Permitted: Yes  
Wet space: No  
Addition: No  
Conversion: No