

Home report

65 Woodchuck Hill Road, Savannah, Chatham County, Georgia,  
United States, 31405



**Total Area: 3132 sq. ft**  
Floor 1: 2001 sq. ft, Floor 2: 1131 sq. ft  
Excluded: Garage 525 sq. ft, Screened porch 231 sq. ft, Low ceiling 63 sq. ft, Open to below 444 sq. ft, Walls: 275 sq. ft

Property summary

**2**  
Floors

**5**  
Bedrooms

**3**  
Bathrooms

Home report

**65 Woodchuck Hill Road, Savannah, Chatham County, Georgia,  
United States, 31405**



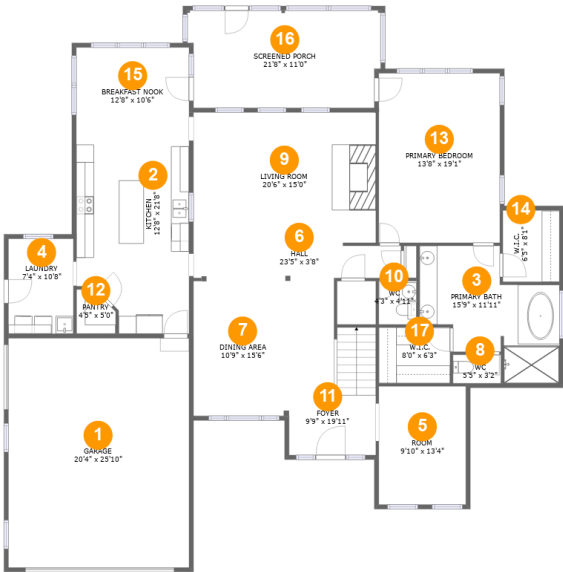
**1**  
Half baths



**1**  
Garages

Home report

65 Woodchuck Hill Road, Savannah, Chatham County, Georgia,  
United States, 31405



Room dimensions

Floor 1

Total:2001sqft    Excluded: 756sqft

#		Max Dimensions	sqft	Included
1	Garage	20'4" x 25'10"	525 sq. ft	No
2	Kitchen	12'8" x 21'8"	253 sq. ft	Yes
3	Primary Bath	15'9" x 11'11"	169 sq. ft	Yes
4	Laundry	7'4" x 10'8"	78 sq. ft	Yes
5	Room	9'10" x 13'4"	131 sq. ft	Yes
6	Hall	23'5" x 3'8"	85 sq. ft	Yes
7	Dining Area	10'9" x 15'6"	167 sq. ft	Yes
8	WC	5'5" x 3'2"	17 sq. ft	Yes
9	Living Room	20'6" x 15'0"	307 sq. ft	Yes
10	WC	4'3" x 4'11"	21 sq. ft	Yes
11	Foyer	9'9" x 19'11"	168 sq. ft	Yes

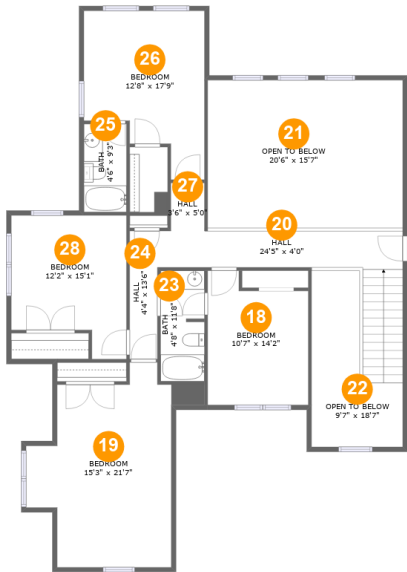
## Home report

**65 Woodchuck Hill Road, Savannah, Chatham County, Georgia,  
United States, 31405**

#		Max Dimensions	sqft	Included
12	Pantry	4'5" x 5'0"	19 sq. ft	Yes
13	Primary Bedroom	13'8" x 19'1"	260 sq. ft	Yes
14	W.I.C.	6'5" x 8'1"	51 sq. ft	Yes
15	Breakfast Nook	12'8" x 10'6"	134 sq. ft	Yes
16	Screened Porch	21'8" x 11'0"	231 sq. ft	No
17	W.I.C.	8'0" x 6'3"	50 sq. ft	Yes

Home report

65 Woodchuck Hill Road, Savannah, Chatham County, Georgia,  
United States, 31405



Room dimensions

Floor 2

Total:1131sqft    Excluded: 507sqft

#		Max Dimensions	sqft	Included
18	Bedroom	10'7" x 14'2"	134 sq. ft	Yes
19	Bedroom	15'3" x 21'7"	204 sq. ft	Yes
20	Hall	24'5" x 4'0"	157 sq. ft	Yes
21	Open To Below	20'6" x 15'7"	319 sq. ft	No
22	Open To Below	9'7" x 18'7"	125 sq. ft	No
23	Bath	4'8" x 11'8"	53 sq. ft	Yes
24	Hall	4'4" x 13'6"	45 sq. ft	Yes
25	Bath	4'6" x 9'3"	42 sq. ft	Yes
26	Bedroom	12'8" x 17'9"	179 sq. ft	Yes
27	Hall	3'6" x 5'0"	18 sq. ft	Yes
28	Bedroom	12'2" x 15'1"	157 sq. ft	Yes

1 Floor 1 - Garage



Max Dimensions: 20'4" x 25'10"  
Calculated Area: 525 sq. ft  
Included: No

Heated: No  
Finished: No  
Enclosed: Yes  
Contiguous: Yes  
Permitted: Yes  
Wet space: No  
Addition: No  
Conversion: No

2 Floor 1 - Kitchen



Max Dimensions: 12'8" x 21'8"  
Calculated Area: 253 sq. ft  
Included: Yes

Heated: Yes  
Finished: Yes  
Enclosed: Yes  
Contiguous: Yes  
Permitted: Yes  
Wet space: No  
Addition: No  
Conversion: No

3 Floor 1 - Primary Bath



Max Dimensions: 15'9" x 11'11"  
Calculated Area: 169 sq. ft  
Included: Yes

Heated: Yes  
Finished: Yes  
Enclosed: Yes  
Contiguous: Yes  
Permitted: Yes  
Wet space: Yes  
Addition: No  
Conversion: No

4 Floor 1 - Laundry



Max Dimensions: 7'4" x 10'8"  
Calculated Area: 78 sq. ft  
Included: Yes

Heated: Yes  
Finished: Yes  
Enclosed: Yes  
Contiguous: Yes  
Permitted: Yes  
Wet space: No  
Addition: No  
Conversion: No

5 Floor 1 - Room



Max Dimensions: 9'10" x 13'4"  
Calculated Area: 131 sq. ft  
Included: Yes

Heated: Yes  
Finished: Yes  
Enclosed: Yes  
Contiguous: Yes  
Permitted: Yes  
Wet space: No  
Addition: No  
Conversion: No

65 Woodchuck Hill Road, Savannah, Chatham County, Georgia,  
United States, 31405

6 Floor 1 - Hall



Max Dimensions: 23'5" x 3'8"  
Calculated Area: 85 sq. ft  
Included: Yes

Heated: Yes  
Finished: Yes  
Enclosed: Yes  
Contiguous: Yes  
Permitted: Yes  
Wet space: No  
Addition: No  
Conversion: No

7 Floor 1 - Dining Area



Max Dimensions: 10'9" x 15'6"  
Calculated Area: 167 sq. ft  
Included: Yes

Heated: Yes  
Finished: Yes  
Enclosed: Yes  
Contiguous: Yes  
Permitted: Yes  
Wet space: No  
Addition: No  
Conversion: No

8 Floor 1 - WC



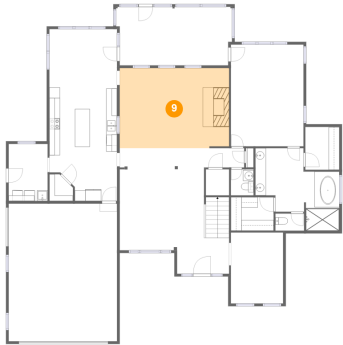
Max Dimensions: 5'5" x 3'2"  
Calculated Area: 17 sq. ft  
Included: Yes

Heated: Yes  
Finished: Yes  
Enclosed: Yes  
Contiguous: Yes  
Permitted: Yes  
Wet space: Yes  
Addition: No  
Conversion: No



65 Woodchuck Hill Road, Savannah, Chatham County, Georgia,  
United States, 31405

## 9 Floor 1 - Living Room



Max Dimensions: 20'6" x 15'0"  
Calculated Area: 307 sq. ft  
Included: Yes

Heated: Yes  
Finished: Yes  
Enclosed: Yes  
Contiguous: Yes  
Permitted: Yes  
Wet space: No  
Addition: No  
Conversion: No

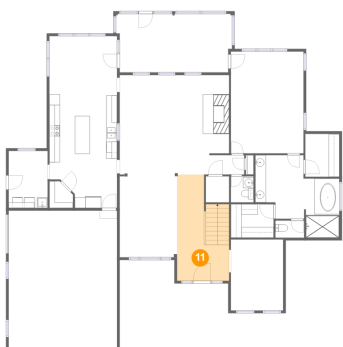
## 10 Floor 1 - WC



Max Dimensions: 4'3" x 4'11"  
Calculated Area: 21 sq. ft  
Included: Yes

Heated: Yes  
Finished: Yes  
Enclosed: Yes  
Contiguous: Yes  
Permitted: Yes  
Wet space: No  
Addition: No  
Conversion: No

## 11 Floor 1 - Foyer



Max Dimensions: 9'9" x 19'11"  
Calculated Area: 168 sq. ft  
Included: Yes

Heated: Yes  
Finished: Yes  
Enclosed: Yes  
Contiguous: Yes  
Permitted: Yes  
Wet space: No  
Addition: No  
Conversion: No

65 Woodchuck Hill Road, Savannah, Chatham County, Georgia,  
United States, 31405

## 12 Floor 1 - Pantry



Max Dimensions: 4'5" x 5'0"  
Calculated Area: 19 sq. ft  
Included: Yes

Heated: Yes  
Finished: Yes  
Enclosed: Yes  
Contiguous: Yes  
Permitted: Yes  
Wet space: No  
Addition: No  
Conversion: No

## 13 Floor 1 - Primary Bedroom



Max Dimensions: 13'8" x 19'1"  
Calculated Area: 260 sq. ft  
Included: Yes

Heated: Yes  
Finished: Yes  
Enclosed: Yes  
Contiguous: Yes  
Permitted: Yes  
Wet space: No  
Addition: No  
Conversion: No

## 14 Floor 1 - W.I.C.



Max Dimensions: 6'5" x 8'1"  
Calculated Area: 51 sq. ft  
Included: Yes

Heated: Yes  
Finished: Yes  
Enclosed: Yes  
Contiguous: Yes  
Permitted: Yes  
Wet space: No  
Addition: No  
Conversion: No

65 Woodchuck Hill Road, Savannah, Chatham County, Georgia,  
United States, 31405

## 15 Floor 1 - Breakfast Nook



Max Dimensions: 12'8" x 10'6"  
Calculated Area: 134 sq. ft  
Included: Yes

Heated: Yes  
Finished: Yes  
Enclosed: Yes  
Contiguous: Yes  
Permitted: Yes  
Wet space: No  
Addition: No  
Conversion: No

## 16 Floor 1 - Screened Porch



Max Dimensions: 21'8" x 11'0"  
Calculated Area: 231 sq. ft  
Included: No

Heated: No  
Finished: Yes  
Enclosed: No  
Contiguous: Yes  
Permitted: Yes  
Wet space: No  
Addition: No  
Conversion: No

## 17 Floor 1 - W.I.C.



Max Dimensions: 8'0" x 6'3"  
Calculated Area: 50 sq. ft  
Included: Yes

Heated: Yes  
Finished: Yes  
Enclosed: Yes  
Contiguous: Yes  
Permitted: Yes  
Wet space: No  
Addition: No  
Conversion: No

18 Floor 2 - Bedroom



Max Dimensions: 10'7" x 14'2"  
Calculated Area: 134 sq. ft  
Included: Yes

Heated: Yes  
Finished: Yes  
Enclosed: Yes  
Contiguous: Yes  
Permitted: Yes  
Wet space: No  
Addition: No  
Conversion: No

19 Floor 2 - Bedroom



Max Dimensions: 15'3" x 21'7"  
Calculated Area: 204 sq. ft  
Included: Yes

Heated: Yes  
Finished: Yes  
Enclosed: Yes  
Contiguous: Yes  
Permitted: Yes  
Wet space: No  
Addition: No  
Conversion: No

20 Floor 2 - Hall



Max Dimensions: 24'5" x 4'0"  
Calculated Area: 157 sq. ft  
Included: Yes

Heated: Yes  
Finished: Yes  
Enclosed: Yes  
Contiguous: Yes  
Permitted: Yes  
Wet space: No  
Addition: No  
Conversion: No

21 Floor 2 - Open To Below



Max Dimensions: 20'6" x 15'7"  
Calculated Area: 319 sq. ft  
Included: No

Heated: No  
Finished: No  
Enclosed: No  
Contiguous: Yes  
Permitted: No  
Wet space: No  
Addition: No  
Conversion: No

22 Floor 2 - Open To Below



Max Dimensions: 9'7" x 18'7"  
Calculated Area: 125 sq. ft  
Included: No

Heated: No  
Finished: No  
Enclosed: No  
Contiguous: Yes  
Permitted: No  
Wet space: No  
Addition: No  
Conversion: No

23 Floor 2 - Bath



Max Dimensions: 4'8" x 11'8"  
Calculated Area: 53 sq. ft  
Included: Yes

Heated: Yes  
Finished: Yes  
Enclosed: Yes  
Contiguous: Yes  
Permitted: Yes  
Wet space: Yes  
Addition: No  
Conversion: No

24 Floor 2 - Hall



Max Dimensions: 4'4" x 13'6"  
Calculated Area: 45 sq. ft  
Included: Yes

Heated: Yes  
Finished: Yes  
Enclosed: Yes  
Contiguous: Yes  
Permitted: Yes  
Wet space: No  
Addition: No  
Conversion: No

25 Floor 2 - Bath



Max Dimensions: 4'6" x 9'3"  
Calculated Area: 42 sq. ft  
Included: Yes

Heated: Yes  
Finished: Yes  
Enclosed: Yes  
Contiguous: Yes  
Permitted: Yes  
Wet space: Yes  
Addition: No  
Conversion: No

26 Floor 2 - Bedroom



Max Dimensions: 12'8" x 17'9"  
Calculated Area: 179 sq. ft  
Included: Yes

Heated: Yes  
Finished: Yes  
Enclosed: Yes  
Contiguous: Yes  
Permitted: Yes  
Wet space: No  
Addition: No  
Conversion: No

27 Floor 2 - Hall



Max Dimensions: 3'6" x 5'0"  
Calculated Area: 18 sq. ft  
Included: Yes

Heated: Yes  
Finished: Yes  
Enclosed: Yes  
Contiguous: Yes  
Permitted: Yes  
Wet space: No  
Addition: No  
Conversion: No

28 Floor 2 - Bedroom



Max Dimensions: 12'2" x 15'1"  
Calculated Area: 157 sq. ft  
Included: Yes

Heated: Yes  
Finished: Yes  
Enclosed: Yes  
Contiguous: Yes  
Permitted: Yes  
Wet space: No  
Addition: No  
Conversion: No