

Home report

409 East Park Avenue Lane, Dixon Park, Savannah, Chatham County, Georgia, United States, 31401




Total Area: 1900 sq. ft


Floor 1: 950 sq. ft, Floor 2: 950 sq. ft

Excluded: Porch 141 sq. ft, Deck 153 sq. ft, Walls: 130 sq. ft

Property summary

 **2** Floors

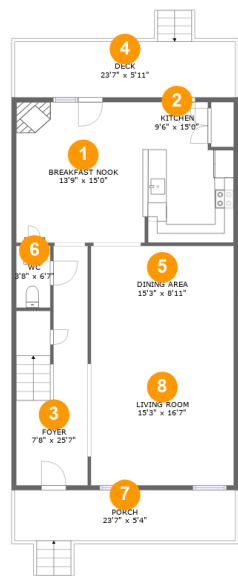
 **3** Bedrooms

 **2** Bathrooms

 **1** Half baths

Home report

409 East Park Avenue Lane, Dixon Park, Savannah, Chatham County, Georgia, United States, 31401



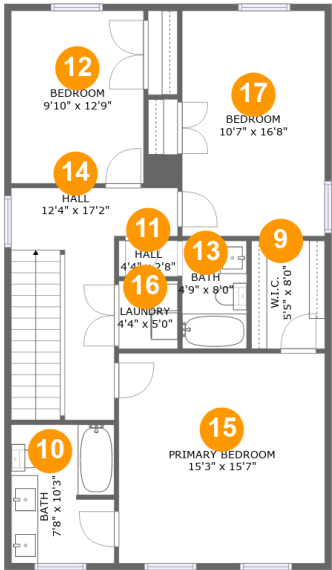
Room dimensions

Floor 1 Total:950sqft Excluded: 294sqft

#		Max Dimensions	sqft	Included
1	Breakfast Nook	13'9" x 15'0"	205 sq. ft	Yes
2	Kitchen	9'6" x 15'0"	128 sq. ft	Yes
3	Foyer	7'8" x 25'7"	166 sq. ft	Yes
4	Deck	23'7" x 5'11"	153 sq. ft	No
5	Dining Area	15'3" x 8'11"	136 sq. ft	Yes
6	WC	3'8" x 6'7"	24 sq. ft	Yes
7	Porch	23'7" x 5'4"	141 sq. ft	No
8	Living Room	15'3" x 16'7"	253 sq. ft	Yes

Home report

409 East Park Avenue Lane, Dixon Park, Savannah, Chatham County, Georgia, United States, 31401



Room dimensions

Floor 2

Total:950sqft Excluded: 0sqft

#		Max Dimensions	sqft	Included
9	W.I.C.	5'5" x 8'0"	44 sq. ft	Yes
10	Bath	7'8" x 10'3"	77 sq. ft	Yes
11	Hall	4'4" x 2'8"	12 sq. ft	Yes
12	Bedroom	9'10" x 12'9"	125 sq. ft	Yes
13	Bath	4'9" x 8'0"	38 sq. ft	Yes
14	Hall	12'4" x 17'2"	148 sq. ft	Yes
15	Primary Bedroom	15'3" x 15'7"	237 sq. ft	Yes
16	Laundry	4'4" x 5'0"	22 sq. ft	Yes
17	Bedroom	10'7" x 16'8"	176 sq. ft	Yes

409 East Park Avenue Lane, Dixon Park, Savannah, Chatham County, Georgia, United States, 31401

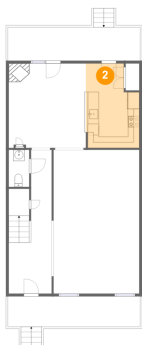
1 Floor 1 - Breakfast Nook



Max Dimensions: 13'9" x 15'0"
Calculated Area: 205 sq. ft
Included: Yes

Heated: Yes
Finished: Yes
Enclosed: Yes
Contiguous: Yes
Permitted: Yes
Wet space: No
Addition: No
Conversion: No

2 Floor 1 - Kitchen

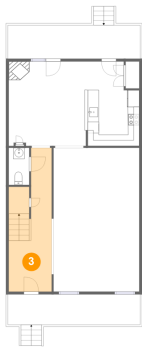


Max Dimensions: 9'6" x 15'0"
Calculated Area: 128 sq. ft
Included: Yes

Heated: Yes
Finished: Yes
Enclosed: Yes
Contiguous: Yes
Permitted: Yes
Wet space: No
Addition: No
Conversion: No

409 East Park Avenue Lane, Dixon Park, Savannah, Chatham County, Georgia, United States, 31401

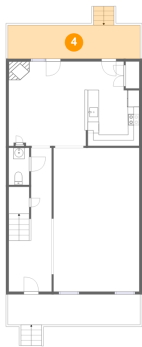
3 Floor 1 - Foyer



Max Dimensions: 7'8" x 25'7"
Calculated Area: 166 sq. ft
Included: Yes

Heated: Yes
Finished: Yes
Enclosed: Yes
Contiguous: Yes
Permitted: Yes
Wet space: No
Addition: No
Conversion: No

4 Floor 1 - Deck



Max Dimensions: 23'7" x 5'11"
Calculated Area: 153 sq. ft
Included: No

Heated: No
Finished: Yes
Enclosed: No
Contiguous: Yes
Permitted: Yes
Wet space: No
Addition: No
Conversion: No

5 Floor 1 - Dining Area



Max Dimensions: 15'3" x 8'11"
Calculated Area: 136 sq. ft
Included: Yes

Heated: Yes
Finished: Yes
Enclosed: Yes
Contiguous: Yes
Permitted: Yes
Wet space: No
Addition: No
Conversion: No

409 East Park Avenue Lane, Dixon Park, Savannah, Chatham County, Georgia, United States, 31401

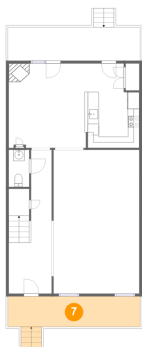
6 Floor 1 - WC



Max Dimensions: 3'8" x 6'7"
Calculated Area: 24 sq. ft
Included: Yes

Heated: Yes
Finished: Yes
Enclosed: Yes
Contiguous: Yes
Permitted: Yes
Wet space: Yes
Addition: No
Conversion: No

7 Floor 1 - Porch



Max Dimensions: 23'7" x 5'4"
Calculated Area: 141 sq. ft
Included: No

Heated: No
Finished: Yes
Enclosed: No
Contiguous: Yes
Permitted: Yes
Wet space: No
Addition: No
Conversion: No

8 Floor 1 - Living Room

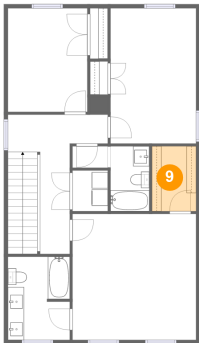


Max Dimensions: 15'3" x 16'7"
Calculated Area: 253 sq. ft
Included: Yes

Heated: Yes
Finished: Yes
Enclosed: Yes
Contiguous: Yes
Permitted: Yes
Wet space: No
Addition: No
Conversion: No

409 East Park Avenue Lane, Dixon Park, Savannah, Chatham County, Georgia, United States, 31401

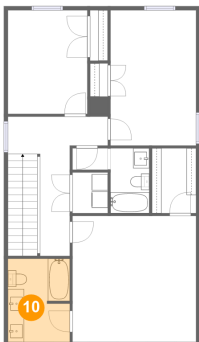
9 Floor 2 - W.I.C.



Max Dimensions: 5'5" x 8'0"
Calculated Area: 44 sq. ft
Included: Yes

Heated: Yes
Finished: Yes
Enclosed: Yes
Contiguous: Yes
Permitted: Yes
Wet space: No
Addition: No
Conversion: No

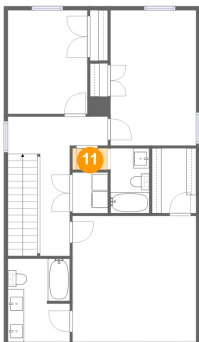
10 Floor 2 - Bath



Max Dimensions: 7'8" x 10'3"
Calculated Area: 77 sq. ft
Included: Yes

Heated: Yes
Finished: Yes
Enclosed: Yes
Contiguous: Yes
Permitted: Yes
Wet space: Yes
Addition: No
Conversion: No

11 Floor 2 - Hall

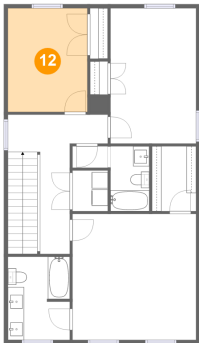


Max Dimensions: 4'4" x 2'8"
Calculated Area: 12 sq. ft
Included: Yes

Heated: Yes
Finished: Yes
Enclosed: Yes
Contiguous: Yes
Permitted: Yes
Wet space: No
Addition: No
Conversion: No

409 East Park Avenue Lane, Dixon Park, Savannah, Chatham County, Georgia, United States, 31401

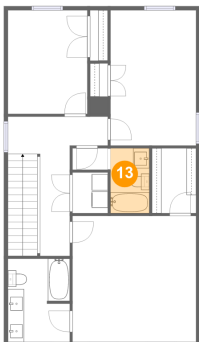
12 Floor 2 - Bedroom



Max Dimensions: 9'10" x 12'9"
Calculated Area: 125 sq. ft
Included: Yes

Heated: Yes
Finished: Yes
Enclosed: Yes
Contiguous: Yes
Permitted: Yes
Wet space: No
Addition: No
Conversion: No

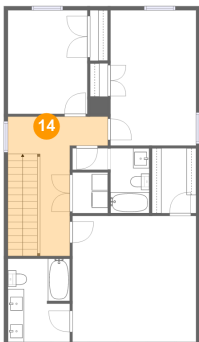
13 Floor 2 - Bath



Max Dimensions: 4'9" x 8'0"
Calculated Area: 38 sq. ft
Included: Yes

Heated: Yes
Finished: Yes
Enclosed: Yes
Contiguous: Yes
Permitted: Yes
Wet space: Yes
Addition: No
Conversion: No

14 Floor 2 - Hall

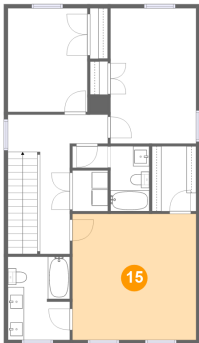


Max Dimensions: 12'4" x 17'2"
Calculated Area: 148 sq. ft
Included: Yes

Heated: Yes
Finished: Yes
Enclosed: Yes
Contiguous: Yes
Permitted: Yes
Wet space: No
Addition: No
Conversion: No

409 East Park Avenue Lane, Dixon Park, Savannah, Chatham County, Georgia, United States, 31401

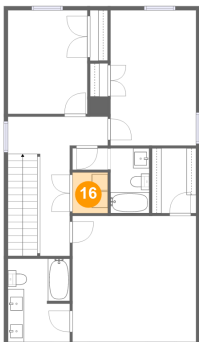
15 Floor 2 - Primary Bedroom



Max Dimensions: 15'3" x 15'7"
Calculated Area: 237 sq. ft
Included: Yes

Heated: Yes
Finished: Yes
Enclosed: Yes
Contiguous: Yes
Permitted: Yes
Wet space: No
Addition: No
Conversion: No

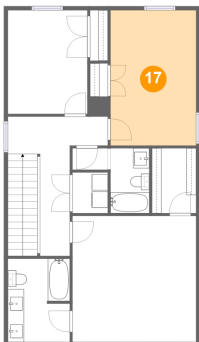
16 Floor 2 - Laundry



Max Dimensions: 4'4" x 5'0"
Calculated Area: 22 sq. ft
Included: Yes

Heated: Yes
Finished: Yes
Enclosed: Yes
Contiguous: Yes
Permitted: Yes
Wet space: No
Addition: No
Conversion: No

17 Floor 2 - Bedroom



Max Dimensions: 10'7" x 16'8"
Calculated Area: 176 sq. ft
Included: Yes

Heated: Yes
Finished: Yes
Enclosed: Yes
Contiguous: Yes
Permitted: Yes
Wet space: No
Addition: No
Conversion: No