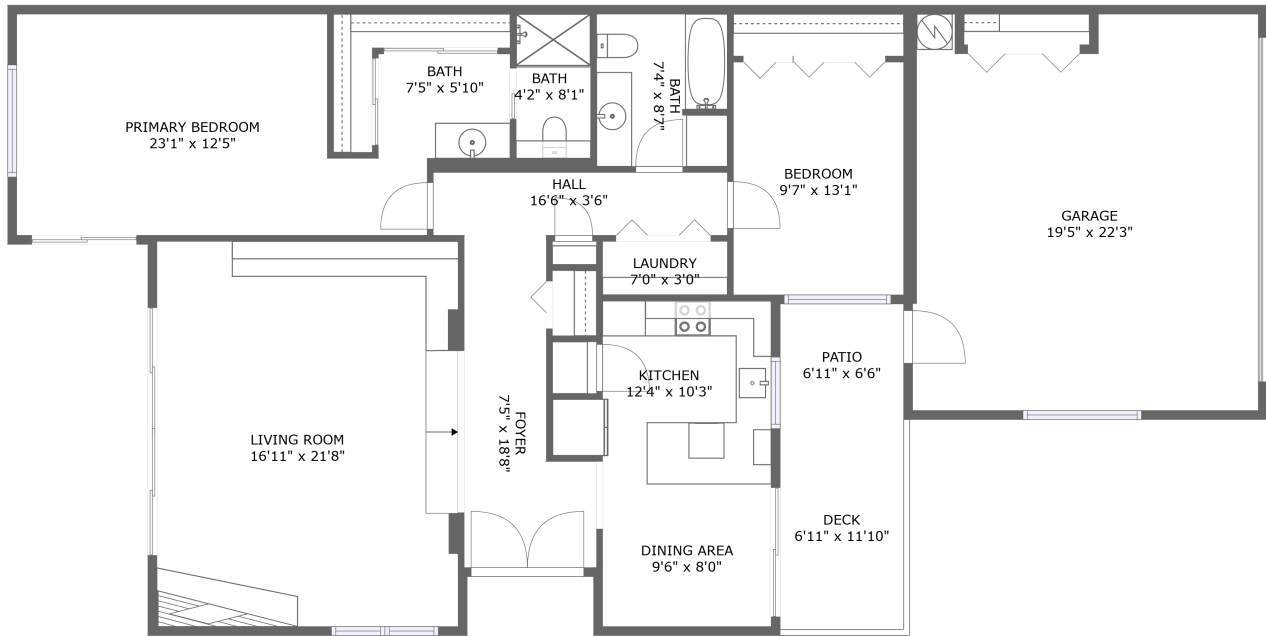


Home report

# 26 Northwood Commons Place, Chico, Butte County, California, United States, 95973



FLOOR 1

**Total Area: 1376 sq. ft**

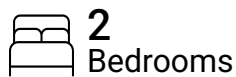
Floor 1: 1376 sq. ft

Excluded: Garage 415 sq. ft, Undefined 12 sq. ft, Deck 82 sq. ft, Patio 45 sq. ft, Walls: 128 sq. ft

## Property summary



**1** Floors



**2** Bedrooms



**2** Bathrooms



**1** Garages

Home report

26 Northwood Commons Place, Chico, Butte County, California, United States, 95973



Room dimensions

Floor 1

Total:1376sqft

Excluded: 554sqft

#		Max Dimensions	sqft	Included
1	Hall	16'6" x 3'6"	58 sq. ft	Yes
2	Garage	19'5" x 22'3"	415 sq. ft	No
3	Bedroom	9'7" x 13'1"	125 sq. ft	Yes
4	Patio	6'11" x 6'6"	45 sq. ft	No
5	Bath	7'4" x 8'7"	62 sq. ft	Yes
6	Deck	6'11" x 11'10"	82 sq. ft	No
7	Living Room	16'11" x 21'8"	366 sq. ft	Yes
8	Foyer	7'5" x 18'8"	103 sq. ft	Yes
9	Bath	7'5" x 5'10"	43 sq. ft	Yes
10	Primary Bedroom	23'1" x 12'5"	241 sq. ft	Yes
11	Bath	4'2" x 8'1"	34 sq. ft	Yes

Home report

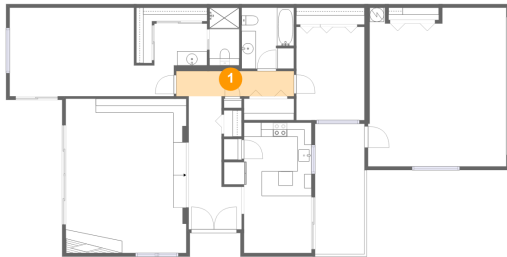
**26 Northwood Commons Place, Chico, Butte County, California,  
United States, 95973**

#		Max Dimensions	sqft	Included
12	Kitchen	12'4" x 10'3"	106 sq. ft	Yes
13	Dining Area	9'6" x 8'0"	76 sq. ft	Yes
14	Laundry	7'0" x 3'0"	21 sq. ft	Yes

26 Northwood Commons Place, Chico, Butte County, California,  
United States, 95973

**1** Floor 1 - Hall

---

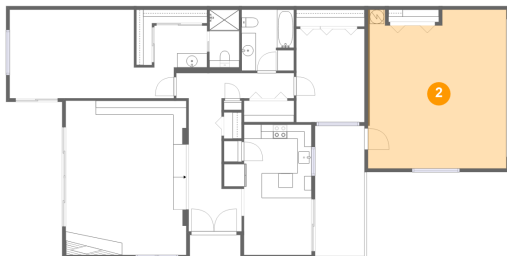


Max Dimensions: 16'6" x  
3'6"  
Calculated Area: 58 sq. ft  
Included: Yes

Heated: Yes  
Finished: Yes  
Enclosed: Yes  
Contiguous:  
Yes  
Permitted: Yes  
Wet space: No  
Addition: No  
Conversion: No

**2** Floor 1 - Garage

---



Max Dimensions: 19'5" x  
22'3"  
Calculated Area: 415 sq. ft  
Included: No

Heated: No  
Finished: No  
Enclosed: Yes  
Contiguous:  
Yes  
Permitted: Yes  
Wet space: No  
Addition: No  
Conversion: No

26 Northwood Commons Place, Chico, Butte County, California, United States, 95973

**3** Floor 1 - Bedroom



Max Dimensions: 9'7" x 13'1"  
Calculated Area: 125 sq. ft  
Included: Yes

Heated: Yes  
Finished: Yes  
Enclosed: Yes  
Contiguous: Yes  
Permitted: Yes  
Wet space: No  
Addition: No  
Conversion: No

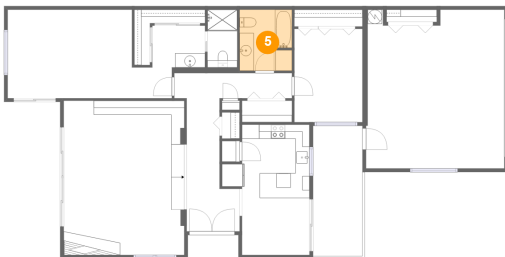
**4** Floor 1 - Patio



Max Dimensions: 6'11" x 6'6"  
Calculated Area: 45 sq. ft  
Included: No

Heated: No  
Finished: Yes  
Enclosed: No  
Contiguous: Yes  
Permitted: Yes  
Wet space: No  
Addition: No  
Conversion: No

**5** Floor 1 - Bath

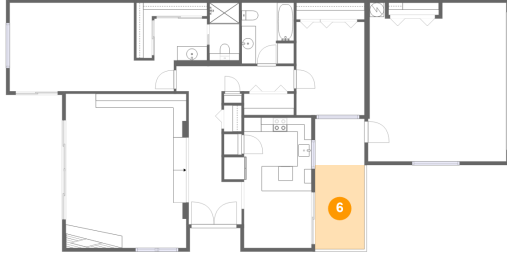


Max Dimensions: 7'4" x 8'7"  
Calculated Area: 62 sq. ft  
Included: Yes

Heated: Yes  
Finished: Yes  
Enclosed: Yes  
Contiguous: Yes  
Permitted: Yes  
Wet space: Yes  
Addition: No  
Conversion: No

26 Northwood Commons Place, Chico, Butte County, California, United States, 95973

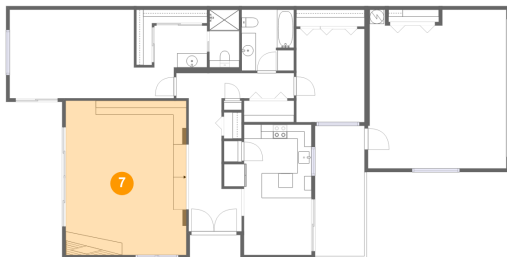
**6** Floor 1 - Deck



Max Dimensions: 6'11" x 11'10"  
Calculated Area: 82 sq. ft  
Included: No

Heated: No  
Finished: Yes  
Enclosed: No  
Contiguous: Yes  
Permitted: Yes  
Wet space: No  
Addition: No  
Conversion: No

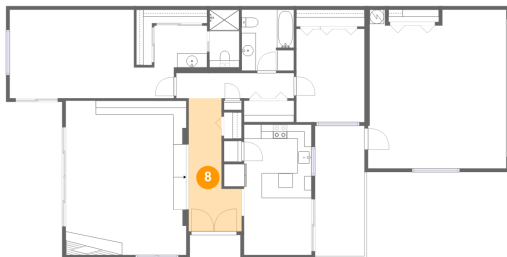
**7** Floor 1 - Living Room



Max Dimensions: 16'11" x 21'8"  
Calculated Area: 366 sq. ft  
Included: Yes

Heated: Yes  
Finished: Yes  
Enclosed: Yes  
Contiguous: Yes  
Permitted: Yes  
Wet space: No  
Addition: No  
Conversion: No

**8** Floor 1 - Foyer



Max Dimensions: 7'5" x 18'8"  
Calculated Area: 103 sq. ft  
Included: Yes

Heated: Yes  
Finished: Yes  
Enclosed: Yes  
Contiguous: Yes  
Permitted: Yes  
Wet space: No  
Addition: No  
Conversion: No

26 Northwood Commons Place, Chico, Butte County, California, United States, 95973

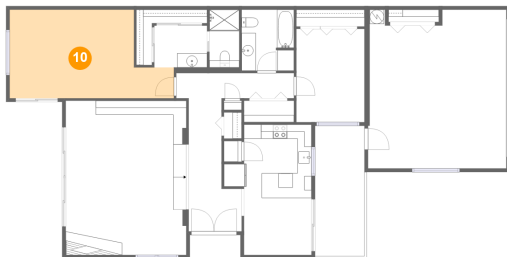
9 Floor 1 - Bath



Max Dimensions: 7'5" x 5'10"  
Calculated Area: 43 sq. ft  
Included: Yes

Heated: Yes  
Finished: Yes  
Enclosed: Yes  
Contiguous: Yes  
Permitted: Yes  
Wet space: Yes  
Addition: No  
Conversion: No

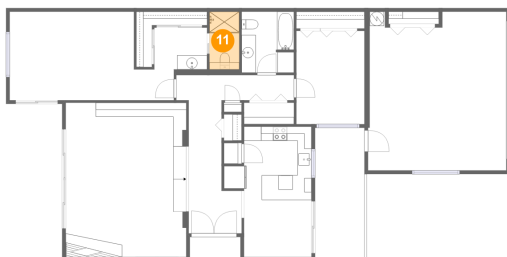
10 Floor 1 - Primary Bedroom



Max Dimensions: 23'1" x 12'5"  
Calculated Area: 241 sq. ft  
Included: Yes

Heated: Yes  
Finished: Yes  
Enclosed: Yes  
Contiguous: Yes  
Permitted: Yes  
Wet space: No  
Addition: No  
Conversion: No

11 Floor 1 - Bath



Max Dimensions: 4'2" x 8'1"  
Calculated Area: 34 sq. ft  
Included: Yes

Heated: Yes  
Finished: Yes  
Enclosed: Yes  
Contiguous: Yes  
Permitted: Yes  
Wet space: Yes  
Addition: No  
Conversion: No

26 Northwood Commons Place, Chico, Butte County, California, United States, 95973

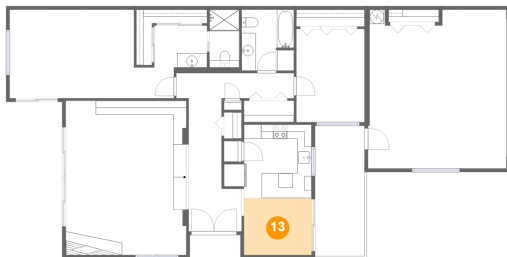
**12** Floor 1 - Kitchen



Max Dimensions: 12'4" x 10'3"  
Calculated Area: 106 sq. ft  
Included: Yes

Heated: Yes  
Finished: Yes  
Enclosed: Yes  
Contiguous: Yes  
Permitted: Yes  
Wet space: No  
Addition: No  
Conversion: No

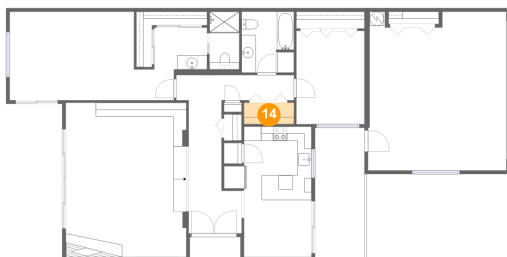
**13** Floor 1 - Dining Area



Max Dimensions: 9'6" x 8'0"  
Calculated Area: 76 sq. ft  
Included: Yes

Heated: Yes  
Finished: Yes  
Enclosed: Yes  
Contiguous: Yes  
Permitted: Yes  
Wet space: No  
Addition: No  
Conversion: No

**14** Floor 1 - Laundry



Max Dimensions: 7'0" x 3'0"  
Calculated Area: 21 sq. ft  
Included: Yes

Heated: Yes  
Finished: Yes  
Enclosed: Yes  
Contiguous: Yes  
Permitted: Yes  
Wet space: No  
Addition: No  
Conversion: No