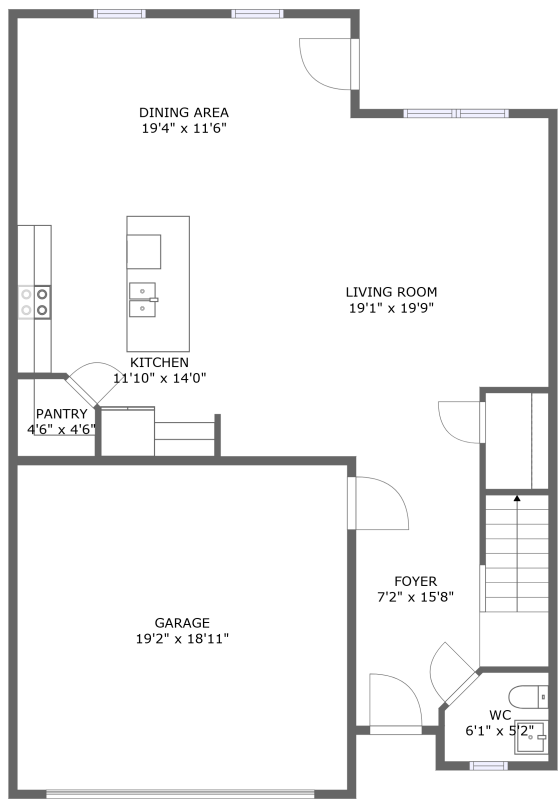
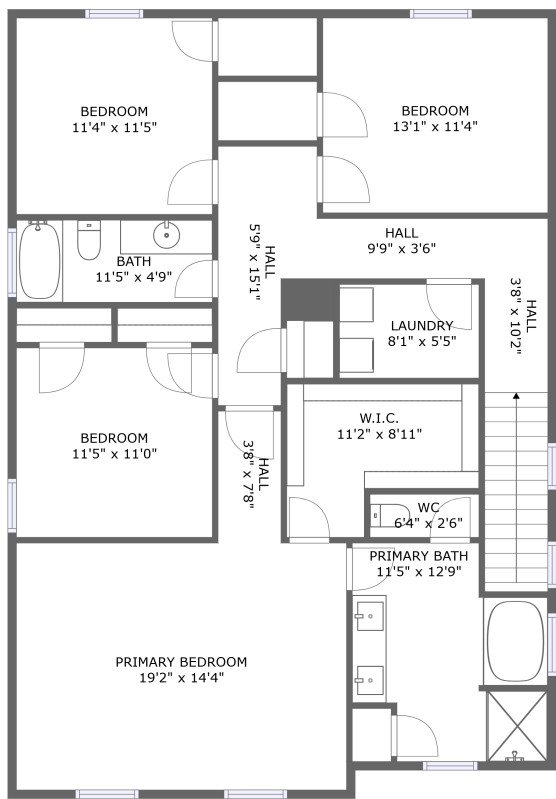


Home report

1 Julliard Court, Bradley Pointe South, Savannah, Chatham County, Georgia, United States, 31419



FLOOR 1



FLOOR 2

Total Area: 2280 sq. ft


Floor 1: 910 sq. ft, Floor 2: 1370 sq. ft

Excluded: Garage 363 sq. ft, Walls: 173 sq. ft

Property summary

 **2** Floors

 **4** Bedrooms

 **2** Bathrooms

Home report

**1 Julliard Court, Bradley Pointe South, Savannah, Chatham
County, Georgia, United States, 31419**



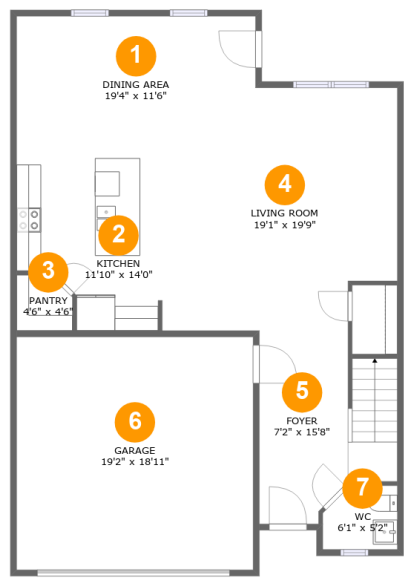
1
Half baths



1
Garages

Home report

1 Julliard Court, Bradley Pointe South, Savannah, Chatham County, Georgia, United States, 31419



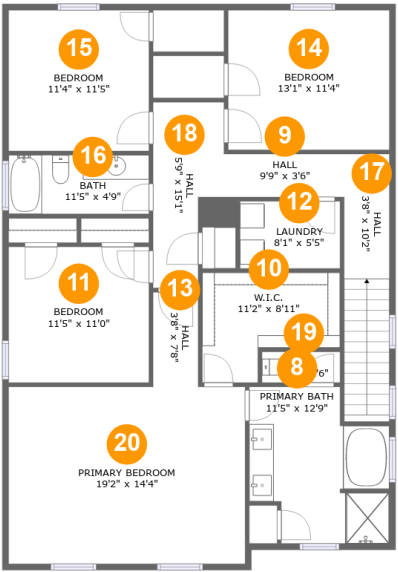
Room dimensions

Floor 1 Total:910sqft Excluded: 363sqft

#		Max Dimensions	sqft	Included
1	Dining Area	19'4" x 11'6"	224 sq. ft	Yes
2	Kitchen	11'10" x 14'0"	143 sq. ft	Yes
3	Pantry	4'6" x 4'6"	19 sq. ft	Yes
4	Living Room	19'1" x 19'9"	317 sq. ft	Yes
5	Foyer	7'2" x 15'8"	146 sq. ft	Yes
6	Garage	19'2" x 18'11"	363 sq. ft	No
7	WC	6'1" x 5'2"	29 sq. ft	Yes

Home report

1 Julliard Court, Bradley Pointe South, Savannah, Chatham County, Georgia, United States, 31419



Room dimensions

Floor 2 Total:1370sqft Excluded: 0sqft

#		Max Dimensions	sqft	Included
8	Primary Bath	11'5" x 12'9"	122 sq. ft	Yes
9	Hall	9'9" x 3'6"	34 sq. ft	Yes
10	W.I.C.	11'2" x 8'11"	81 sq. ft	Yes
11	Bedroom	11'5" x 11'0"	126 sq. ft	Yes
12	Laundry	8'1" x 5'5"	44 sq. ft	Yes
13	Hall	3'8" x 7'8"	28 sq. ft	Yes
14	Bedroom	13'1" x 11'4"	148 sq. ft	Yes
15	Bedroom	11'4" x 11'5"	130 sq. ft	Yes
16	Bath	11'5" x 4'9"	54 sq. ft	Yes
17	Hall	3'8" x 10'2"	80 sq. ft	Yes
18	Hall	5'9" x 15'1"	71 sq. ft	Yes

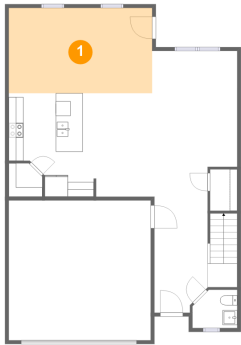
Home report

1 Julliard Court, Bradley Pointe South, Savannah, Chatham County, Georgia, United States, 31419

#		Max Dimensions	sqft	Included
19	WC	6'4" x 2'6"	16 sq. ft	Yes
20	Primary Bedroom	19'2" x 14'4"	276 sq. ft	Yes

1 Julliard Court, Bradley Pointe South, Savannah, Chatham County, Georgia, United States, 31419

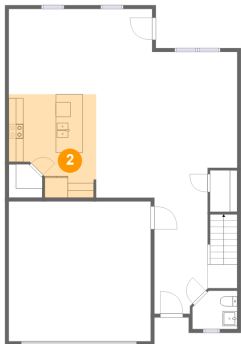
1 Floor 1 - Dining Area



Max Dimensions: 19'4" x 11'6"
Calculated Area: 224 sq. ft
Included: Yes

Heated: Yes
Finished: Yes
Enclosed: Yes
Contiguous: Yes
Permitted: Yes
Wet space: No
Addition: No
Conversion: No

2 Floor 1 - Kitchen

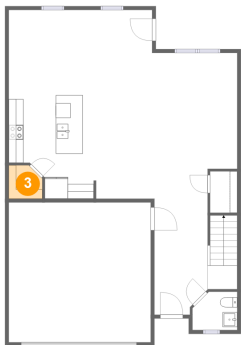


Max Dimensions: 11'10" x 14'0"
Calculated Area: 143 sq. ft
Included: Yes

Heated: Yes
Finished: Yes
Enclosed: Yes
Contiguous: Yes
Permitted: Yes
Wet space: No
Addition: No
Conversion: No

1 Julliard Court, Bradley Pointe South, Savannah, Chatham County, Georgia, United States, 31419

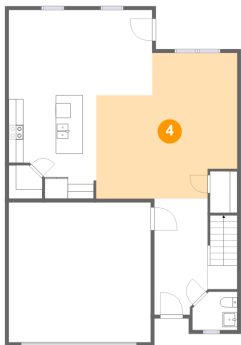
3 Floor 1 - Pantry



Max Dimensions: 4'6" x 4'6"
Calculated Area: 19 sq. ft
Included: Yes

Heated: Yes
Finished: Yes
Enclosed: Yes
Contiguous: Yes
Permitted: Yes
Wet space: No
Addition: No
Conversion: No

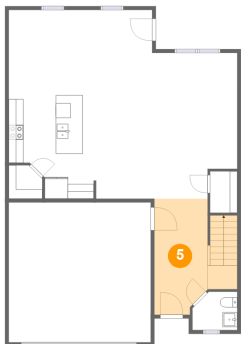
4 Floor 1 - Living Room



Max Dimensions: 19'1" x 19'9"
Calculated Area: 317 sq. ft
Included: Yes

Heated: Yes
Finished: Yes
Enclosed: Yes
Contiguous: Yes
Permitted: Yes
Wet space: No
Addition: No
Conversion: No

5 Floor 1 - Foyer



Max Dimensions: 7'2" x 15'8"
Calculated Area: 146 sq. ft
Included: Yes

Heated: Yes
Finished: Yes
Enclosed: Yes
Contiguous: Yes
Permitted: Yes
Wet space: No
Addition: No
Conversion: No

1 Julliard Court, Bradley Pointe South, Savannah, Chatham County, Georgia, United States, 31419

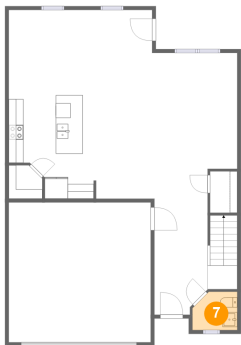
6 Floor 1 - Garage



Max Dimensions: 19'2" x 18'11"
Calculated Area: 363 sq. ft
Included: No

Heated: No
Finished: No
Enclosed: Yes
Contiguous: Yes
Permitted: Yes
Wet space: No
Addition: No
Conversion: No

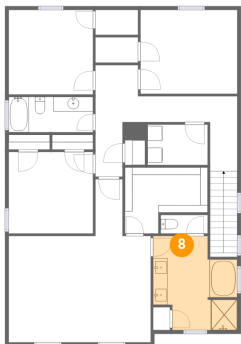
7 Floor 1 - WC



Max Dimensions: 6'1" x 5'2"
Calculated Area: 29 sq. ft
Included: Yes

Heated: Yes
Finished: Yes
Enclosed: Yes
Contiguous: Yes
Permitted: Yes
Wet space: Yes
Addition: No
Conversion: No

8 Floor 2 - Primary Bath

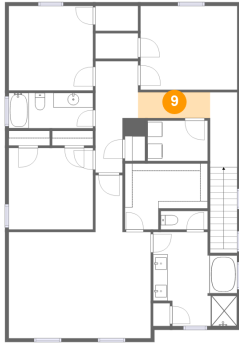


Max Dimensions: 11'5" x 12'9"
Calculated Area: 122 sq. ft
Included: Yes

Heated: Yes
Finished: Yes
Enclosed: Yes
Contiguous: Yes
Permitted: Yes
Wet space: Yes
Addition: No
Conversion: No

1 Julliard Court, Bradley Pointe South, Savannah, Chatham County, Georgia, United States, 31419

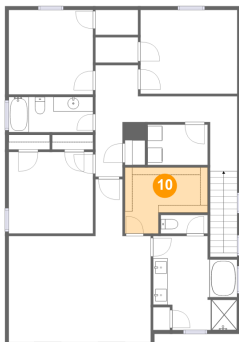
9 Floor 2 - Hall



Max Dimensions: 9'9" x 3'6"
Calculated Area: 34 sq. ft
Included: Yes

Heated: Yes
Finished: Yes
Enclosed: Yes
Contiguous: Yes
Permitted: Yes
Wet space: No
Addition: No
Conversion: No

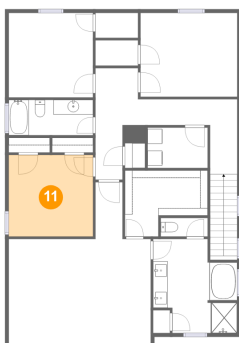
10 Floor 2 - W.I.C.



Max Dimensions: 11'2" x 8'11"
Calculated Area: 81 sq. ft
Included: Yes

Heated: Yes
Finished: Yes
Enclosed: Yes
Contiguous: Yes
Permitted: Yes
Wet space: No
Addition: No
Conversion: No

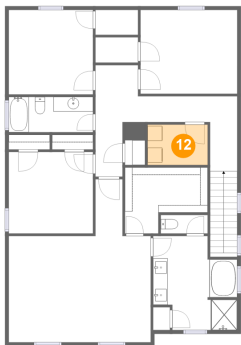
11 Floor 2 - Bedroom



Max Dimensions: 11'5" x 11'0"
Calculated Area: 126 sq. ft
Included: Yes

Heated: Yes
Finished: Yes
Enclosed: Yes
Contiguous: Yes
Permitted: Yes
Wet space: No
Addition: No
Conversion: No

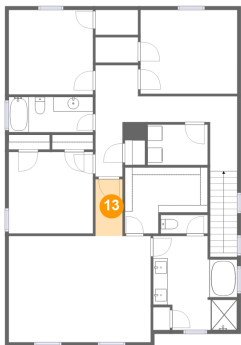
12 Floor 2 - Laundry



Max Dimensions: 8'1" x 5'5"
Calculated Area: 44 sq. ft
Included: Yes

Heated: Yes
Finished: Yes
Enclosed: Yes
Contiguous: Yes
Permitted: Yes
Wet space: No
Addition: No
Conversion: No

13 Floor 2 - Hall



Max Dimensions: 3'8" x 7'8"
Calculated Area: 28 sq. ft
Included: Yes

Heated: Yes
Finished: Yes
Enclosed: Yes
Contiguous: Yes
Permitted: Yes
Wet space: No
Addition: No
Conversion: No

14 Floor 2 - Bedroom

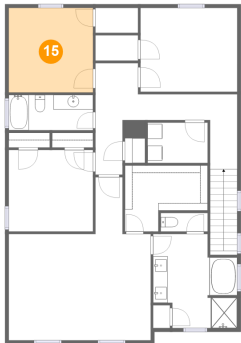


Max Dimensions: 13'1" x 11'4"
Calculated Area: 148 sq. ft
Included: Yes

Heated: Yes
Finished: Yes
Enclosed: Yes
Contiguous: Yes
Permitted: Yes
Wet space: No
Addition: No
Conversion: No

1 Julliard Court, Bradley Pointe South, Savannah, Chatham County, Georgia, United States, 31419

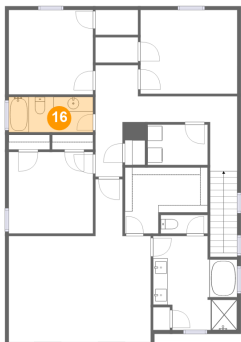
15 Floor 2 - Bedroom



Max Dimensions: 11'4" x 11'5"
Calculated Area: 130 sq. ft
Included: Yes

Heated: Yes
Finished: Yes
Enclosed: Yes
Contiguous: Yes
Permitted: Yes
Wet space: No
Addition: No
Conversion: No

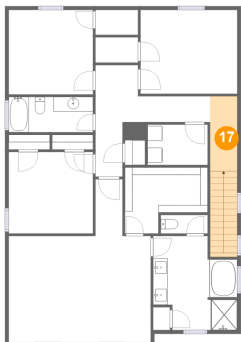
16 Floor 2 - Bath



Max Dimensions: 11'5" x 4'9"
Calculated Area: 54 sq. ft
Included: Yes

Heated: Yes
Finished: Yes
Enclosed: Yes
Contiguous: Yes
Permitted: Yes
Wet space: Yes
Addition: No
Conversion: No

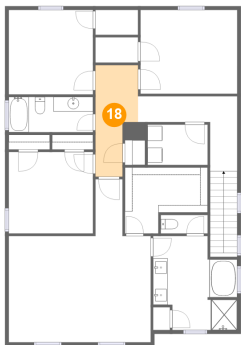
17 Floor 2 - Hall



Max Dimensions: 3'8" x 10'2"
Calculated Area: 80 sq. ft
Included: Yes

Heated: Yes
Finished: Yes
Enclosed: Yes
Contiguous: Yes
Permitted: Yes
Wet space: No
Addition: No
Conversion: No

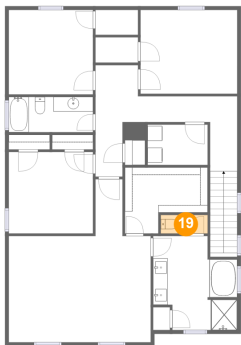
18 Floor 2 - Hall



Max Dimensions: 5'9" x 15'1"
Calculated Area: 71 sq. ft
Included: Yes

Heated: Yes
Finished: Yes
Enclosed: Yes
Contiguous: Yes
Permitted: Yes
Wet space: No
Addition: No
Conversion: No

19 Floor 2 - WC



Max Dimensions: 6'4" x 2'6"
Calculated Area: 16 sq. ft
Included: Yes

Heated: Yes
Finished: Yes
Enclosed: Yes
Contiguous: Yes
Permitted: Yes
Wet space: Yes
Addition: No
Conversion: No

20 Floor 2 - Primary Bedroom



Max Dimensions: 19'2" x 14'4"
Calculated Area: 276 sq. ft
Included: Yes

Heated: Yes
Finished: Yes
Enclosed: Yes
Contiguous: Yes
Permitted: Yes
Wet space: No
Addition: No
Conversion: No